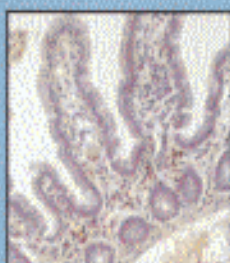
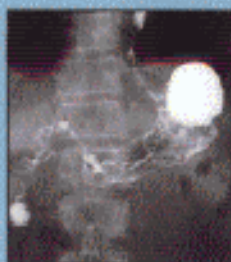
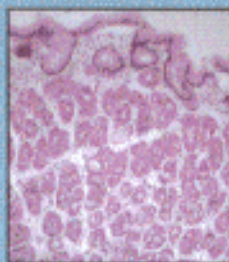


A Colour Handbook of
Gastroenterology

H. J. F. Hodgson
Ralph Boulton
Claire Cousins
Sanjeev Gupta



Suranaree University of Technology



31051000611307

 **MANSON**
PUBLISHING

Contents

Preface, vii

Acknowledgements, viii

1. Gastroenterological problems, 1

Introduction, 2

Approach to the Patient, 2

Major Presenting Complaints, 2

Physical Examination, 6

2. Mouth and pharynx, 11

Oral Problems, 12

Oral Cancer, 14

Oral Keratoses and Leukoplakia, 15

Bullous Lesions, 15

3. Oesophagus, 17

Anatomy/Histology, 18

Investigating the Oesophagus, 18

Carcinoma of the Oesophagus, 21

Achalasia and Other Primary Motility Disorders, 24

Columnar-Lined Oesophagus, 26

Oesophageal Infections, 27

Oesophageal Varices, 28

Oesophageal Webs and Rings, 31

Diverticula and Pouches, 32

Hiatus Hernia, 34

Gastro-Oesophageal Reflux Disease and Oesophagitis, 36

4. Stomach and Duodenum, 41

Stomach: Anatomy and Histology, 42

Investigation of the Stomach, 44

Gastritis, 46

Helicobacter pylori, 49

Chronic Gastric Ulcer, 52

Gastric Cancer, 54

Complications of Gastric Surgery, 56

Disorders of Gastric Motility and Bezoars, 58

Ménétrier's Disease and Other Rugal Hyperplastic Gastropathies, 60

Gastric Antral Vascular Ectasia, 61

Gastric Polyps and Benign Gastric Tumours, 62

Gastric Lymphoma, 64

Duodenum: Anatomy and Histology, 65

Chronic Duodenal Ulceration, 66

Complications of Peptic Ulcers, 68

5. Jejunum and Ileum, 69

Anatomy and Histology, 70

Investigations of the Small Intestine, 70

Investigation of Diarrhoea and Malabsorption, 72

Malabsorptive State, 74

Coeliac Disease – Gluten-Sensitive Enteropathy, 76

Complications of Coeliac Disease, 78

Whipple's Disease – Intestinal

Lipodystrophy, 80

Short Gut or Short Bowel Syndrome, 82

Protein-Losing Enteropathy, 84

Tropical Sprue; Post-Infectious

Malabsorption, 87

Bacterial Overgrowth, 88

Radiation Enteritis, 90

Immunodeficiency States, 91

Crohn's Disease, 94

Ileostomies, 99

Lymphoma of the Small Intestine, 100

Small-Intestinal Carcinoid Tumours, 102

Other Intestinal Tumours, 104

Intestinal Obstruction, 105

Pseudo-Obstruction, 107

Infections of the Small Intestine, 107

Vascular Disease of the Small Intestine, 110

6. Pancreas, 113

Anatomy, 114

Acute Pancreatitis, 116

Chronic Pancreatitis, 118

Inherited Pancreatic Disorders, 121

Complications of Pancreatitis, 122

Endocrine Pancreatic Tumours, 124

Cancer of the Exocrine Pancreas, 126

7. Biliary Conditions, 129

Anatomy, 130

Extrahepatic Biliary Disease, 131

Choledochal Cysts, 135

Gallbladder Cancer, 136

Cholangiohepatitis, 137

Primary Sclerosing Cholangitis (PSC), 138

Cholangiocarcinoma, 140

Contents

8. Colonic disease, 141

- Anatomy, 142
- Colonic Polyps, 144
- Colon Carcinoma, 146
- Polyposis Syndromes – Mainly
 - Inherited, 148
- Ulcerative Colitis, 151
- Collagenous Colitis/Microscopic Colitis/Lymphocytic Colitis, 159
- Radiation Colitis, 160
- Infectious Colitis and Proctocolitis, 162
- Drug and Chemical Colitis, 166
- Cathartic Colon, 167
- Parasitic Infestations of the Colon, 168
- Diverticular Disease of the Colon, 172
- Hirschsprung's Disease and Congenital Megacolon, 174
- Solitary Rectal Ulcer, 175
- Vascular Disorders of the Colon, 176
- Haemorrhoids, Anal Fissures and Fistulae, 180

9. Gastrointestinal bleeding, 181

- Introduction, 182
- Acute Upper Gastrointestinal Bleeding, 183
- Lower Gastrointestinal Bleeding, 186
- Small-Intestinal Bleeding, 188

10. Miscellaneous Conditions, 189

- Ascites, 190
- Constipation, 192
- Acute Peritonitis, 193

Appendix, 195

- Table 6. Causes of Abdominal Pain, 196
- Table 7. Causes of Dysphagia, 196
- Table 8. Major GI Causes of Anaemia, 197
- Table 9. Causes of Acute GI Bleeding, 197
- Table 10. Causes of Protein-Losing Enteropathy, 198
- Table 11. Causes of Abnormal Small Intestine Biopsies with Villous Abnormalities Causing Malabsorption in Adults, 198
- Table 12. Causes of Constipation, 198
- Table 13. Screening Blood Tests for GI Disease, 198
- Table 14. Causes of Diarrhoea and Malabsorption, 199
- Table 15. Anatomical Investigations and Potential Value in Chronic Diarrhoea and Malabsorption, 200

Normal Ranges, 201

- Table 16. Urine, 201
- Table 17. Faeces, 201
- Table 18. Plasma/serum, 202

Dynamic Tests, 204

- Table 19. Gastric Function Tests, 204
- Table 20. Tests for Malabsorption, 204

Index, 205