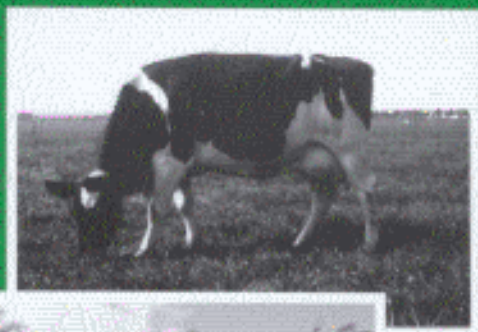


Field and Laboratory Methods for Grassland and Animal Production Research



Edited by
L. 't Mannetje
and R.M. Jones

Suranaree University of Technology



31051000647442



CABI Publishing

Contents

19050

Contributors	vii
Preface	xi
1 Grassland Vegetation and its Measurement <i>L. 't Mannetje and R.M. Jones</i>	1
2 Pattern Analysis in Grassland and Animal Production Systems <i>A.M. Kelly and K.E. Basford</i>	9
3 Modelling Pasture and Animal Production <i>K.G. Rickert, J.W. Stuth and G.M. McKeon</i>	29
4 Measuring Botanical Composition of Grasslands <i>R.D.B. Whalley and M.B. Hardy</i>	67
5 Measuring Sward Structure <i>E.A. Laca and G. Lemaire</i>	103
6 Plant Population Dynamics in Grasslands <i>M.J.M. Hay, R.M. Jones and D.M. Orr</i>	123
7 Measuring Biomass of Grassland Vegetation <i>L. 't Mannetje</i>	151

8	Evaluation of Species and Cultivars <i>R. Schultze-Kraft and L. 't Mannetje</i>	179
9	Remote Sensing in Vegetation and Animal Studies <i>M.L. Roderick, V. Chewings and R.C.G. Smith</i>	205
10	Assessing Rangeland Condition and Trend <i>M.H. Friedel, W.A. Laycock and G.N. Bastin</i>	227
11	Measuring Chemical Composition and Nutritive Value in Forages <i>A.T. Adesogan, D.I. Givens and E. Owen</i>	263
12	Measuring Physical, Chemical and Biological Soil Parameters in Grasslands <i>J. Bouma, J.P. Curry and V.J.G. Houba</i>	279
13	Measuring and Monitoring Nitrogen and Phosphorus Flows and Losses in Grassland Systems <i>S.C. Jarvis and O. Oenema</i>	305
14	Designing Animal Production Studies <i>D.I. Bransby and A.R. Maclaurin</i>	327
15	Measuring Animal Performance <i>D.B. Coates and P. Penning</i>	353
16	Development-oriented Socioeconomic Methods in Grassland and Animal Production Research <i>A. Waters-Bayer and W. Bayer</i>	403
	Index	437