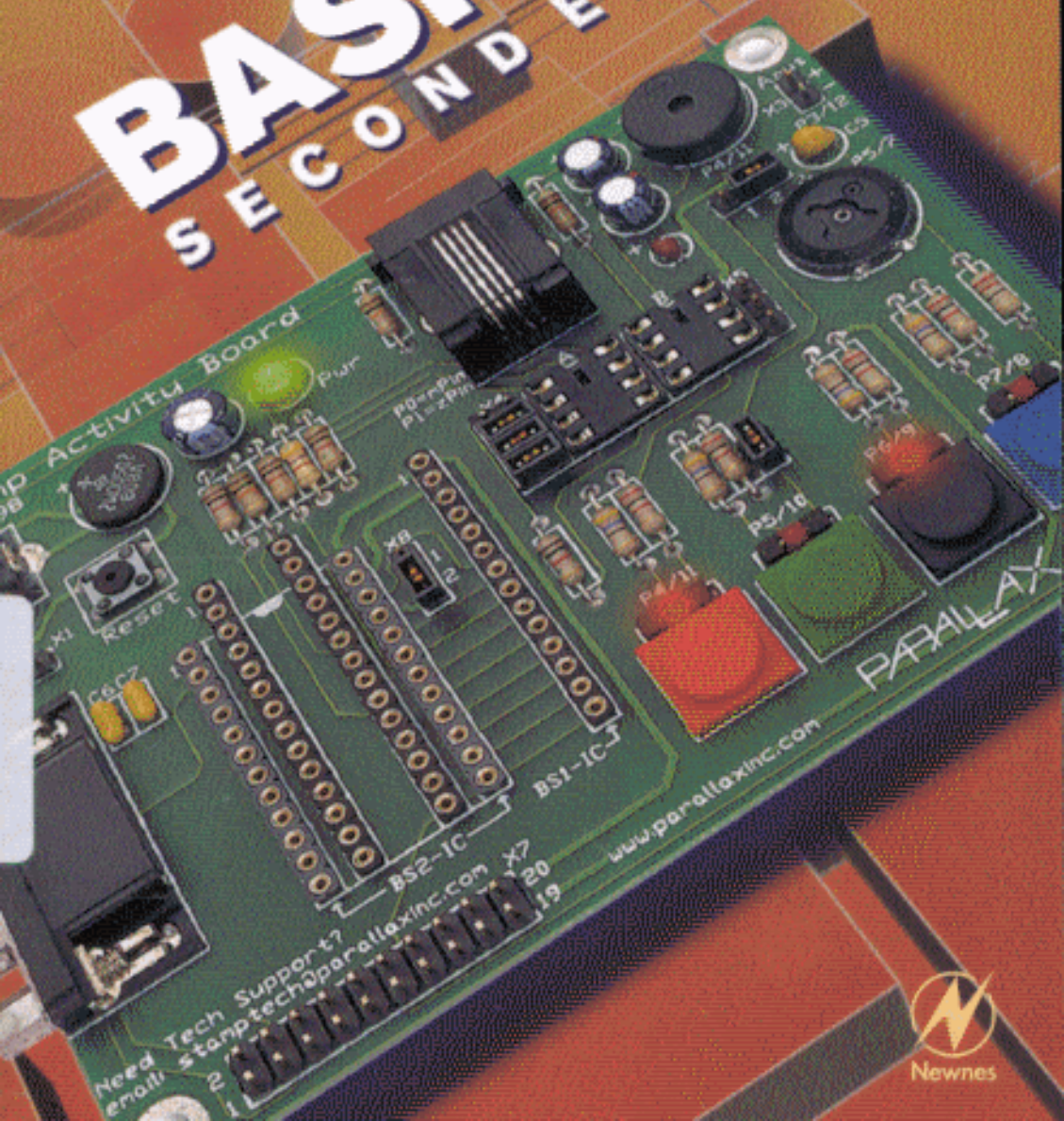


Claus Kühnel • Klaus Zahnert

BASIC Stamp SECOND EDITION



Newnes

Contents

Preface

ix

1 Introduction to Microcontrollers 1

- 1.1 Function Groups of a Simple Microcontroller 1
- 1.2 Some Important Terms 7

2 Hardware Base of the BASIC Stamps 11

- 2.1 Microchip's PIC micros 11
 - 2.1.1 Internal Architecture 11
 - 2.1.2 Peripheral Functions 14
- 2.2 Scenix Semiconductor's SX Microcontroller 20
 - 2.2.1 Internal Architecture 20
 - 2.2.2 Peripheral Functions 21
- 2.3 Technical Data of PIC16C5x and SX28AC 23

3 BASIC Stamp 29

- 3.1 BASIC Stamp I[®] Device 29
- 3.2 BASIC Stamp version D 31
- 3.3 BS1-IC 32
- 3.4 BASIC Stamp II Device 33
- 3.5 BS2-IC 34
- 3.6 BASIC Stamp IIsx 37
- 3.7 BS2sx-IC 39
- 3.8 Comparison of BASIC Stamps 39

4	BASIC Stamp Development Systems	41
4.1	System Requirements	41
4.1.1	System Requirements for DOS-Based Tools	41
4.1.2	System Requirements for BASIC Stamp II Windows Interface	42
4.2	Parallax's Programming Packages	42
4.3	Preparations for BASIC Stamp I Program Development	42
4.4	Preparations for BASIC Stamp II Program Development	43
4.5	Working with the Development Systems	45
4.5.1	Editing Programs with DOS-Based Tools	46
4.5.2	Editing BS2 Programs with the Windows Interface	49
4.5.3	Programming BASIC Stamp I	53
4.5.4	Programming BASIC Stamp II	55
4.6	Some Tools	62
4.6.1	Program STMPsize	62
4.6.2	Program BSLOAD	62
4.6.3	RS232 Monitor Programs	63
4.6.4	Program BS1EMU	64
5	PBASIC for All BASIC Stamps	69
5.1	PBASIC Instruction Set	69
5.2	Explanations of Some PBASIC Instructions	96
5.2.1	Query a Key with BUTTON	97
5.2.2	Generating Tones with SOUND	98
5.2.3	Digital-to-Analog Conversion with PWM	99
5.2.4	Resistor Measurement with POT	102
5.2.5	Memory Management for BASIC Stamp IIsx	104
5.3	Numeric Operations	107
5.4	Source Text Formatting	112
6	On the Way to Application: The Practical Use of BASIC Stamp	115
6.1	Experiments and Some Tools	115
6.2	Hints for Programming and Debugging	119
6.3	Run-Time of PBASIC Instructions	121
6.3.1	Measurement of a Single Instruction with a Scope	121
6.3.2	Measurement of Multiple Instructions with a Stop Watch	122
6.3.3	Runtime of PBASIC Instructions for BS2 and BS2sx	122
7	BASIC Stamp Applications	125
7.1	Basics for Applications	125
7.1.1	[BS1]—RS232 Interface Between BASIC Stamp and PC	126
7.1.2	[BS1]—Communication Between BASIC Stamps	135
7.1.3	Electrical Pin Conditions for Analog and Digital I/Os	140

7.2	More Complex Applications	141
7.2.1	BASIC Stamp Network	141
7.2.2	Scalable Node Address Protocol (S.N.A.P.)	159
7.2.3	Communication Between BASIC Stamps over Longer Distances	171
7.2.4	[BS2]—Remote Alarm Message via Modem	177
7.2.5	[BS1]—Connecting a Keyboard	181
7.2.6	Control of Digital Displays	184
7.2.7	Management of Time Information	207
7.2.8	I/O Extension with I ² C Circuits	218
7.2.9	[BS1]—D/A Conversion with WM8016	234
7.2.10	[BS1]—Motion Detection with a Radar Sensor	238
7.2.11	[BS1]—Distance Measurement with IR Triangulation	241
7.2.12	[BS2]—Scale Based on Frequency Output	248
7.2.13	[BS2]—Generate and Recognize DTMF Tones	250
7.2.14	[BS1]—Light Measurements with TSL230 Sensor	254
7.2.15	[BS2]—Serial Reading from Phone Card	260
7.2.16	[BS2]—Home Automation with X-10	263
7.2.17	[BS2sx]—Tilt Control with Servo	269
7.2.18	[BS2]—Controlling a Stepper Motor with Stepper Motor Control Module	274
7.2.19	[BS1]—Simple Optical Data Transmission	278
Appendix A / Reserved Words		283
Appendix B BASIC Stamp—Versions of Firmware		285
Appendix C HAYES Commands—The Most Important Modem Instructions		287
Appendix D Product Sources		289
Index		293