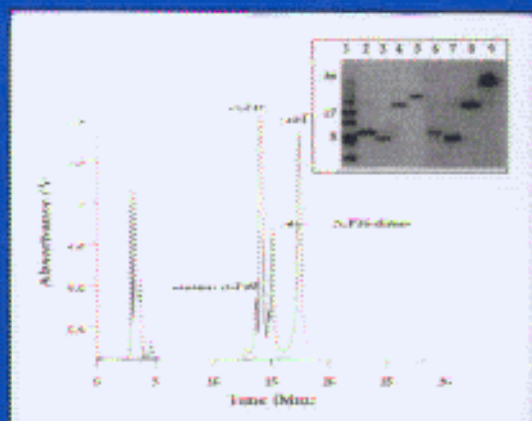


Methods in Molecular Biology™

VOLUME 146

Mass Spectrometry of Proteins and Peptides

Edited by
John R. Chapman



 HUMAN PRESS

Contents

Preface	v
Contributors	xi
1 <i>De Novo</i> Peptide Sequencing by Nano electrospray Tandem Mass Spectrometry Using Triple Quadrupole and Quadrupole/Time-of-Flight Instruments Andrej Shevchenko, Igor Chernushevich, Matthias Wilm, and Matthias Mann	1
2 Direct Analysis of Proteins in Mixtures: <i>Application to Protein Complexes</i> John R. Yates, III, Andrew J. Link, and David Schieltz	17
3 Characterization of a Mutant Recombinant S100 Protein Using Electrospray Ionization Mass Spectrometry Mark J. Raftery	27
4 Searching Sequence Databases via <i>De Novo</i> Peptide Sequencing by Tandem Mass Spectrometry Richard S. Johnson and J. Alex Taylor	41
5 Signature Peptides: <i>From Analytical Chemistry to Functional Genomics</i> Haydar Karaoglu and Ian Humphery-Smith	63
6 Investigating the Higher Order Structure of Proteins: <i>Hydrogen Exchange, Proteolytic Fragmentation, and Mass Spectrometry</i> John R. Engen and David L. Smith	95
7 Probing Protein Surface Topology by Chemical Surface Labeling, Crosslinking, and Mass Spectrometry Keiryn L. Bennett, Thomas Matthiesen, and Peter Roepstorff	113
8 Secondary Structure of Peptide Ions in the Gas Phase Evaluated by MIKE Spectrometry: <i>Relevance to Native Conformations</i> Igor A. Kaltashov, Aiqun Li, Zoltán Szilágyi, Károly Vékey, and Catherine Fenselau	133

9	Preparation and Mass Spectrometric Analysis of S-Nitrosohemoglobin Pasquale Ferranti, Gianfranco Mamone, and Antonio Malorni	147
10	Multiple and Subsequent MALDI-MS On-Target Chemical Reactions for the Characterization of Disulfide Bonds and Primary Structures of Proteins H. Peter Happersberger, Marcus Bantscheff, Stefanie Barbirz, and Michael O. Glocker	167
11	Epitope Mapping by a Combination of Epitope Excision and MALDI-MS Carol E. Parker and Kenneth B. Tomer	185
12	Identification of Active Site Residues in Glycosidases by Use of Tandem Mass Spectrometry David J. Vocadlo and Stephen G. Withers	203
13	Probing Protein–Protein Interactions with Mass Spectrometry Richard W. Kriwacki and Gary Siuzdak	223
14	Studies of Noncovalent Complexes in an Electrospray Ionization/Time-of-Flight Mass Spectrometer Andrew N. Krutchinsky, Ayeda Ayed, Lynda J. Donald, Werner Ens, Harry W. Duckworth, and Kenneth G. Standing	239
15	Kinetic Analysis of Enzymatic and Nonenzymatic Degradation of Peptides by MALDI-TOFMS Fred Rosche, Jörn Schmidt, Torsten Hoffmann, Robert P. Pauly, Christopher H. S. McIntosh, Raymond A. Pederson, and Hans-Ulrich Demuth	251
16	Characterization of Protein Glycosylation by MALDI-TOFMS Ekaterina Mirgorodskaya, Thomas N. Krogh, and Peter Roepstorff	273
17	Positive and Negative Labeling of Human Proinsulin, Insulin and C-Peptide with Stable Isotopes: <i>New Tools for In Vivo Pharmacokinetic and Metabolic Studies</i> Reto Stöcklin, Jean-François Arrighi, Khan Hoang-Van, Lan Vu, Fabrice Cerini, Nicolas Gilles, Roger Genet, Jan Markusssen, Robin E. Offord, and Keith Rose	293

18	Identification of Snake Species by Toxin Mass Fingerprinting of Their Venoms <i>Reto Stöcklin, Dietrich Mebs, Jean-Claude Boulain, Pierre-Alain Panchaud, Henri Virelizier, and Cécile Gillard-Factor</i>	317
19	Mass Spectrometric Characterization of the β -Subunit of Human Chorionic Gonadotropin <i>Roderick S. Black and Larry D. Bowers</i>	337
20	Analysis of Gluten in Foods by MALDI-TOFMS <i>Enrique Méndez, Israel Valdés, and Emilio Camafelta</i>	355
21	Quantitation of Nucleotidyl Cyclase and Cyclic Nucleotide-Sensitive Protein Kinase Activities by Fast-Atom Bombardment Mass Spectrometry: A Paradigm for Multiple Component Monitoring in Enzyme Incubations by Quantitative Mass Spectrometry <i>Russell P. Newton</i>	369
22	Influence of Salts, Buffers, Detergents, Solvents, and Matrices on MALDI-MS Protein Analysis in Complex Mixtures <i>K. Olaf Börnsen</i>	387
23	Sample Preparation Techniques for Peptides and Proteins Analyzed by MALDI-MS <i>Martin Kussmann and Peter Roepstorff</i>	405
24	Analysis of Hydrophobic Proteins and Peptides by Mass Spectrometry <i>Johann Schaller</i>	425
25	Analysis of Proteins and Peptides Directly from Biological Fluids by Immunoprecipitation/Mass Spectrometry <i>Sacha N. Uljon, Louis Mazzarelli, Brian T. Chait, and Rong Wang</i>	439
26	Detection of Molecular Determinants in Complex Biological Systems Using MALDI-TOF Affinity Mass Spectrometry <i>Judy Van de Water and M. Eric Gershwin</i>	453
27	Rapid Identification of Bacteria Based on Spectral Patterns Using MALDI-TOFMS <i>Jackson O. Lay, Jr. and Ricky D. Holland</i>	461
28	Appendices <i>John R. Chapman</i>	489
	Index	527