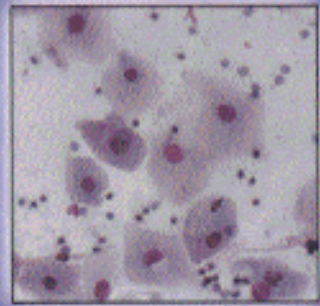
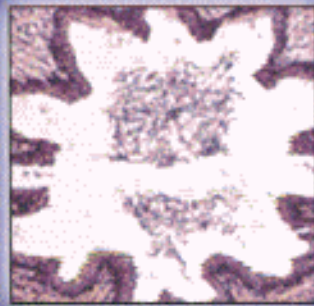
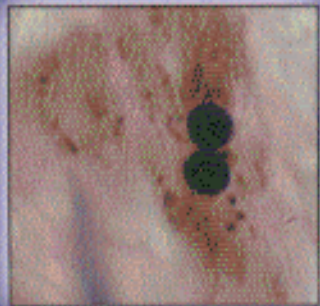


Color Atlas of

Veterinary Histology

*Second
Edition*



William J. Bacha, Jr.
Linda M. Bacha



CONTENTS

| | | |
|-----------|---|------------|
| 1 | General Principles of Histology | 1 |
| 2 | Epithelium | 9 |
| 3 | Connective Tissue Proper and Embryonal Connective Tissue | 13 |
| 4 | Cartilage | 19 |
| 5 | Bone | 21 |
| 6 | Blood | 27 |
| 7 | Bone Marrow | 37 |
| 8 | Muscle | 41 |
| 9 | Nervous System | 45 |
| 10 | Cardiovascular System | 57 |
| 11 | Lymphatic System | 69 |
| 12 | Integument | 85 |
| 13 | Digestive System | 119 |
| 14 | Urinary System | 163 |
| 15 | Respiratory System | 175 |
| 16 | Endocrine System | 191 |
| 17 | Male Reproductive System | 203 |
| 18 | Female Reproductive System | 221 |
| 19 | The Eye | 245 |
| 20 | The Ear | 261 |
| | Glossary | 269 |
| | Bibliography | 285 |
| | Index | 287 |