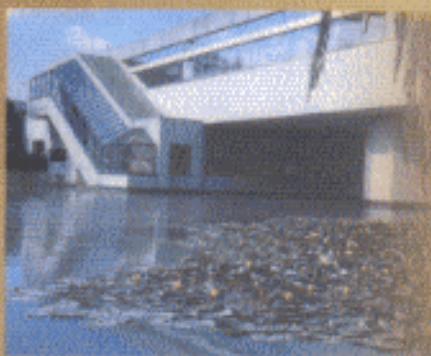


Stormwater Retention Basins



Coordinators
Jean-Michel Bergue
Yves Ruperd

TABLE OF CONTENTS

INTRODUCTION

1

- 1 Types of Basins 4
 - 1.1 Open Basins 4
 - 1.2 Underground Basins 4
- 2 Functions and Usages 4
 - 2.1 Control of Stormwater Flows 5
 - 2.2 Ecological Reserve 6
 - 2.3 Leisure-time Activities 6
 - 2.4 Other Usages 7

I. DESIGN AND PLANNING

8

- I-1 Project Execution 8
 - I-1.1 Stages of Project Execution 9
 - Formulation of the problem to be resolved 9
 - Definition of project objectives 9
 - Examination and selection of technical solutions 9
 - Evaluation, choice of final solution and planning 9
 - Execution and follow-up 9
 - Follow-up evaluation of development 9
 - I-1.2 Parties to the Project 10
 - Institutional authorities 10
 - Sanitary and environmental engineers 10
 - Urban developers (urbanists) 10
 - Managers of urban utilities 10
 - Beneficiaries 10
 - I-1.3 Basin Dossier for Execution of the Project 11
- I-2 Preliminary Studies 11
 - I-2.1 Hydrological Study 11
 - I-2.1.1 Diagnostics of the drainage system 11
 - I-2.1.2 Study of the receiving waters 12
 - I-2.3 Short Listing Potential Sites 12
 - I-2.3.1 Elements of urbanisation 12
 - History of water in the city 12
 - Land-use and objectives of urbanisation 13
 - Landscaping of environment 13

- Sociological environment 13
- I-2.3.2 Technical considerations 13
- I-2.4 Analysis of Potential Sites 14
 - I-2.4.1 Topographical study 15
 - I-2.4.2 Geologic and geotechnical study 15
 - I-2.4.3 Hydrogeological study 15
 - Case of wet ponds 15
 - Case of dry basins 16
 - Case of underground basins 17
 - Some examples of failure due to faulty inferences from the hydrological study 17
 - I-2.4.4 Climatological study 18
 - I-2.4.5 Pedological study 19
 - I-2.4.6 Occupancy of subsoil 19
- I-3 Choice of type of Basin 19
 - I-3.1 Physical Criteria 20
 - I-3.2 Urbanistic Criteria 20
 - I-3.2.1 Land-use 20
 - I-3.2.2 Nature of relevant catchment area 20
 - I-3.2.3 Resident population 21
 - I-3.3 Economic Criteria 21
 - I-3.4 Environmental Criteria 21
 - I-3.4.1 Impact on hydraulic regime 22
 - I-3.4.2 Impacts on water quality 22
 - Case of wet ponds 22
 - Case of dry basins 23
 - Case of underground basins 23
 - I-3.4.3 Impacts on urban landscaping 23
 - I-3.4.4 Impacts on quality of life 23
- I-4 Dimensioning of Basins 24
 - I-4.1 Introduction 24
 - I-4.2 Hydraulic Computations 25
 - I-4.2.1 Introduction 25
 - I-4.2.2 Evaluation of release rate 25
 - I-4.2.3 Choice of frequency of failure of basin 26
 - I-4.2.4 Weir for draining floods 26
 - I-4.2.5 How to drain unusual floods? 27
 - I-4.2.6 Determination of useful volume 27
 - Simple methods 28
 - Rain method 28
 - Volume method 31
 - Limitations of these methods 33
 - Discharge method 33
 - I-4.2.7 Regulation of discharge 34

- I-4.3 Remediation 34
 - I-4.3.1 Characteristics of stormwater pollutants 36
 - Pollutants loads of stormwater 36
 - Distribution of pollution during a storm event 36
 - Characteristics of pollutants in stormwaters 37
 - I-4.3.2 Possible alternatives for a remediation 38
 - Remediation in the basin itself 39
 - Sedimentation in compartmentalised basins 39
 - Sedimentation in retention tanks (on a by-pass used in times of need) 39
 - Remediation assemblies 40
 - I-4.3.3 Software for water quality 40
- I-4.4 Case of Infiltration Basins 43
 - I-4.4.1 Introduction 43
 - I-4.4.2 Computation of infiltration 43
 - Water table at great depth and terrain homogeneous 43
 - Basin is tangent to or cuts water table in homogeneous medium 44
 - Basin entirely transverse to aquifer 44
 - Soil clogging 46
- I-5 Potentials and Constraints in Planning 46
 - I-5.1 Land-use 46
 - I-5.1.1 Potentials of development 46
 - I-5.1.2 Constraints to development planning 46
 - Constraints related to occupation of land 47
 - Constraints to planning areas of leisure, open spaces and sports grounds 48
 - Constraints of hydraulic planning 48
 - Compatibility of planning 48
 - I-5.1.3 Conflict among various usages 49
 - I-5.2 Ecology 50
 - I-5.2.1 Natural waterbodies 50
 - I-5.2.2 Ecological considerations in basin dimensioning 51
 - I-5.2.3 Polluting loads 51
 - I-5.2.4 Maintenance of water level 51
 - I-5.2.5 Diversity of biotopes 51
 - I-5.2.6 Vegetation of the basin and banks 52
 - Case of detention ponds 52
 - Case of dry basins 55
- I-6 Shape and Morphology of Retention Basins 55
 - I-6.1 General Shape 55
 - I-6.1.1 Detention ponds 56
 - I-6.1.2 Dry basins 56
 - I-6.1.3 Underground storage basins 57

- I-6.2 Useful and Total Depth of Detention Ponds 57
 - I-6.3 Approaches 58
 - I-6.3.1 Approaches for maintenance and safety 58
 - I-6.3.2 Promenades/Walkways 58
 - I-6.3.3 Other special approaches 58
 - I-6.3.4 Safety of approaches to open basins 58
 - I-6.4 Banks 59
 - I-6.4.1 Detention ponds 59
 - Natural banks 59
 - Dry basins 60
 - I-6.4.2 Lined or 'constructed' banks 60
 - I-7 Embankments and Dykes 62
 - I-7.1 Basic Requirements 62
 - I-7.2 Structure of Embankments and Dykes 62
 - I-7.2.1 Types and profiles 62
 - I-7.2.2 Dimensional characteristics 63
 - Freeboard 63
 - Breadth at the top 64
 - Side slopes 64
 - I-7.2.3 Protection by a system of internal drainage 65
 - Draining through floor carpet 65
 - Channelled drain, vertical or inclined upstreamwards 65
 - I-7.2.4 Protection by impermeabilisation 65
 - I-7.2.5 Complementary protection 65
 - Filter toe 65
 - Drainage ditches 65
 - I-7.2.6 Filtering of drainage materials 66
 - I-7.3 Examining Stability of the Dyke 66
 - I-7.3.1 Introduction 66
 - I-7.3.2 Various tests for stability 66
- II. CONSTRUCTION—INSTALLATION** 68
- II-1 Construction of Open Basins 68
 - II-1.1 Complementary Studies 68
 - II-1.1.1 Exploratory drilling under dyke hold 68
 - II-1.1.2 Survey of site and borrow areas for fill material 69
 - II-1.1.3 Laboratory tests 70
 - Tests for identification 70
 - Specific tests on fill materials: characteristics of state of materials 70
 - Specific tests for calculating stability of works 70
 - Tests for measuring the coefficient of permeability k 72
 - II-1.2 Construction of Earth Embankments 72
 - II-1.2.1 Initial preparation 72
 - II-1.2.2 Earthmoving 72

- II-1.2.3 Extraction of materials 73
 - Case of loose materials (sand, soil) 73
 - Case of compact rocky materials 73
- II-1.2.4 Utilisation of excavated earth in embankment or dyke 74
- II-1.2.5 Construction measures for homogeneous earthen dykes: Compaction and treatment of the on-site soils 74
- II-1.3 Watertightness 76
 - II-1.3.1 Treatment of in-situ soils: watertightness by mechanical and chemical measures 76
 - Compaction 76
 - Addition of fine material to the natural soil, clay puddling 76
 - Use of cement and other binders 77
 - Other techniques 77
 - II-1.3.2 Watertightness by geomembranes 77
 - Choice of appropriate membrane 77
 - Installation of geomembranes 77
- II-2 Open Basins: Ancillary Works 83
 - II-2.1 Inlet Works 83
 - II-2.2 Pretreatment Works 83
 - II-2.2.1 Introduction 83
 - II-2.2.2 Screens 84
 - II-2.2.3 Grit removal 84
 - II-2.2.4 Oil and grease removal units 87
 - Deoiler with scumboard 88
 - Deoiler with flow breakers 89
 - Cleanser deoiler (Fig. II.8) 89
 - II-2.2.5 Settling tanks 90
 - Recapitulation of settling 90
 - Standard settling tanks 91
 - Lamellar settlers 92
 - II-2.2.6 Other processes 94
 - II-2.2.7 Conclusion 94
 - II-2.3 Outlet or Evacuation Works 96
 - II-2.3.1 Control of water level during low-water periods 97
 - II-2.3.2 Regulation of discharge 98
 - Calibrated orifices 98
 - Flap modules 99
 - Valves with constant downstream level 101
 - Adjustable shutters with float 102
 - Floating weirs 103
 - Other types of control devices 103
 - Relative devices with variable flow rates 103
 - Evacuation pumps 105

II-2.3.3	Weir for excessive floods	105
	Surface spillways	106
	Tunnel spillways	106
II-2.3.4	Bottom-level evacuation	106
II-2.3.5	Protection against quicksand	108
II-2.3.6	Junction with natural drain of evacuation	109
II-2.3.7	Description of some typical outlet works	109
II-3	Open Basins: Other Requirements	112
II-3.1	Banks and Embankments	112
	II-3.1.1 Banks of water basins	112
	II-3.1.2 Techniques of protection against wind erosion	115
	II-3.1.3 Embankments of dry basins	115
II-3.2	Access	116
II-3.3	Vegetation	116
	II-3.3.1 Case of detention pond	117
	II-3.3.2 Case of dry basins	117
II-4	Underground Tanks	118
II-4.1	Construction Aspects	118
	II-4.1.1 Influence of hydrogeology and geology on construction	118
	Consequences of lowering the water table	118
	Influence of construction aspects	119
	Permanent drainage	122
	Influence of water quality	123
	II-4.1.2 Tank shape	123
II-4.2	Auxiliary Works	123
	II-4.2.1 Workshop and equipment yard	123
	II-4.2.2 Systems of evacuation	123
	Evacuation of water	124
	Evacuation of sludge	125
	II-4.2.3 Maintenance and management devices	125
	Provisions for maintenance devices	125
	Telesurveillance	125
	Ventilation and other facilities	126
III.	MAINTENANCE AND MANAGEMENT	127
III-1	Maintenance	127
III-1.1	Routine Maintenance	127
	III-1.1.1 Open basins (ponds)	127
	Maintenance of hydraulic works	127
	Maintenance of pretreatment devices	128
	Cleanliness of basin and surrounding area	128
	Control and management of vegetation	129
	III-1.1.2 Underground tanks	130
III-1.2	Follow-up of Dyke Behaviour	131
	III-1.2.1 Surveillance	131

III-1.2.2	Instrumental survey	132
III-1.3	Ecological Functioning of Water Bodies	132
III-1.3.1	Recapitulation of ecology	132
	Biotope	133
	Biocoenosis	133
	Functioning of the ecosystem	136
III-1.3.2	Methodology of follow-up and diagnostics	139
III-1.3.3	Management of fish populations	142
III-2	Malfunctioning of Wet Ponds and Remedial Measures	143
III-2.1	Common Dysfunctioning	143
III-2.1.1	Pollution by waste water	143
III-2.1.2	Plant proliferation	143
	Example of proliferation	143
	Water blooms	144
III-2.1.3	Fish mortality	145
III-2.2	Remedial Measures	145
III-2.2.1	Remedial weeding	145
	Mechanical weeding	146
	Chemical weeding	147
	Biological control of plants	147
III-2.2.2	Aeration	147
III-2.2.3	Periodic emptying	148
III-2.2.4	Elimination of silt and other wastes	149
	Mechanical devices for desludging	150
	Physicochemical control of sludge	150
III-3	Disposal of Sludge and Wastes	151
III-4	Accidental Pollution	152
III-4.1	Combat Preparation	152
III-4.2	Observations	153
III-4.3	Sounding an Alert	153
III-4.4	Evaluation	154
III-4.4.1	Identification of pollutant	154
III-4.4.2	Sampling	155
III-4.5	Intervention	156
III-4.5.1	Public safety and workers' safety	156
III-4.5.2	Measures for safeguarding the basin	156
III-4.5.3	Measures to combat episodal pollution	156
	Measures for confinement of pollution to land	156
	Remediation, cleaning, restoration	159
	Transfer, transport and treatment of pollutants	159
IV.	COSTS	
IV-1	Introduction	160
IV-2	Investment Necessary: Preliminary Studies	160

IV-3	Cost of Construction	161
IV-3.1	Cost of Engineering	161
IV-3.2	Cost of Investment	162
IV-3.2.1	Open basins	162
IV-3.2.2	Underground tanks	166
IV-4	Operational Costs	166
IV-4.1	Open Basins	167
IV-4.2	Underground Tanks	169
V.	LEGAL REGULATIONS (IN FRANCE)	170
V-1	Water and Environment	170
V-1.1	Stormwater Control	170
V-1.2	Discharge Permit	170
V-1.3	Impact Study (Environmental Impact Study or Statement)	171
V-1.4	Policing of Fishing	171
V-2	Dams	171
V-3	Public Safety and Health	172
V-3.1	Powers and Responsibilities of the Mayor	172
V-3.2	Departmental Sanitary Regulations	172
V-4	Urban Planning	173
V-4.1	General Principles of Town and Country Planning	173
V-4.2	Elaboration of POS	173
V-4.3	Building Permit	174
V-4.4	Preliminary Declaration	175
V-4.5	Authorisation of Various Installations and Works	175
V-4.6	Financing of Works	175
V-4.7	Construction of Retention Basins in the NC and ND Zones	176
V-5	Accidental Pollution	176
	Annexure: Case study	179
	References	219
	Glossary	223
	Index	227
Colour Plates		between pages—124-125