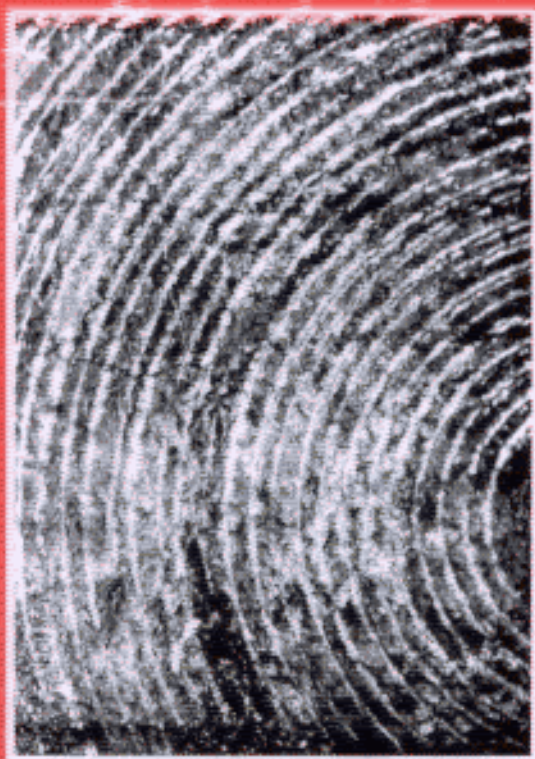


ENGINEERING ROCK MECHANICS

Part 2: Illustrative Worked Examples



By

John P. Harrison

and

John A. Hudson *FReng*

*Imperial College of Science, Technology and Medicine
University of London, UK*

This book complements "Engineering Rock Mechanics:
An Introduction to the Principles", published in 1997

Pergamon

Contents

Preface	xi
Units and Symbols	xiii
 Part A: Illustrative worked examples — Questions and answers	
1 Introduction	3
1.1 The subject of engineering rock mechanics	3
1.2 Questions and answers: introduction	5
1.3 Additional points	8
2 Geological setting	13
2.1 Rock masses	13
2.2 Questions and answers: geological setting	19
2.3 Additional points	26
3 Stress	27
3.1 Understanding stress	27
3.2 Questions and answers: stress	30
3.3 Additional points	37
4 <i>In situ</i> rock stress	39
4.1 The nature of <i>in situ</i> rock stress	39
4.2 Questions and answers: <i>in situ</i> rock stress	42
4.3 Additional points	56
5 Strain and the theory of elasticity	57
5.1 Stress and strain are both tensor quantities	57
5.2 Questions and answers: strain and the theory of elasticity	60
5.3 Additional points	68
6 Intact rock: deformability, strength and failure	71
6.1 Intact rock	71
6.2 Questions and answers: intact rock	74
6.3 Additional points	87

7 Fractures and hemispherical projection	89
7.1 Natural, pre-existing fractures	89
7.2 Questions and answers: fractures and hemispherical projection	100
7.3 Additional points	115
8 Rock masses: deformability, strength and failure	117
8.1 The nature of rock masses	117
8.2 Questions and answers: rock masses	122
8.3 Additional points	138
9 Permeability	141
9.1 Permeability of intact rock and rock masses	141
9.2 Question and answers: permeability	144
9.3 Additional points	157
10 Anisotropy and inhomogeneity	159
10.1 Rock masses: order and disorder	159
10.2 Questions and answers: anisotropy and inhomogeneity	161
10.3 Additional points	172
11 Testing techniques	175
11.1 Rock properties	175
11.2 Questions and answers: testing techniques	176
11.3 Additional points	192
12 Rock mass classification	193
12.1 Rock mass parameters and classification schemes	193
12.2 Questions and answers: rock mass classification	194
12.3 Additional points	212
13 Rock dynamics and time dependency	215
13.1 Strain rates	215
13.2 Questions and answers: rock dynamics and time dependency	217
13.3 Additional points	228
14 Rock mechanics interactions and rock engineering systems	231
14.1 Interactions	231
14.2 Questions and answers: rock mechanics interactions and rock engineering systems	234
14.3 Additional points	244
15 Excavation principles	247
15.1 Rock excavation	247
15.2 Questions and answers: excavation principles	250
15.3 Additional points	262
16 Rock reinforcement and rock support	265
16.1 The stabilization system	265
16.2 Questions and answers: rock reinforcement and rock support	267
16.3 Additional points	281

17 Foundation and slope instability mechanisms	285
17.1 Near-surface instability	285
17.2 Question and answers: foundation and slope instability mechanisms	288
17.3 Additional points	309
18 Design of surface excavations	311
18.1 The project objective	311
18.2 Questions and answers: design of surface excavations	314
18.3 Additional points	337
19 Underground excavation instability mechanisms	339
19.1 Underground instability	339
19.2 Questions and answers: underground excavation instability mechanisms	343
19.3 Additional points	369
20 Design of underground excavations	373
20.1 The project objective	373
20.2 Question and answers: design of underground excavations	375
20.3 Additional points	397

Part B: Questions only

The Questions in Part A are reproduced here without the answers for those who wish to attempt the questions without the answers being visible.

Questions 1.1–1.5: introduction	401
Questions 2.1–2.10: geological setting	403
Questions 3.1–3.10: stress	407
Questions 4.1–4.10: <i>in situ</i> rock stress	409
Questions 5.1–5.10: strain and the theory of elasticity	413
Questions 6.1–6.10: intact rock	417
Questions 7.1–7.10: fractures and hemispherical projection	421
Questions 8.1–8.10: rock masses	425
Questions 9.1–9.10: permeability	431
Questions 10.1–10.10: anisotropy and inhomogeneity	437
Questions 11.1–11.10: testing techniques	441
Questions 12.1–12.10: rock mass classification	447
Questions 13.1–13.10: rock dynamics and time dependency	451
Questions 14.1–14.10: rock mechanics interactions and rock engineering systems	455
Questions 15.1–15.10: excavation principles	459
Questions 16.1–16.10: rock reinforcement and rock support	465

x *Contents*

Questions 17.1–17.10: foundation and slope instability mechanisms	469
Questions 18.1–18.10: design of surface excavations	473
Questions 19.1–19.10: underground excavation instability mechanisms	477
Questions 20.1–20.10: design of underground excavations	481
References	487
Appendix A: 3-D stress cube model	491
Appendix B: Hemispherical projection sheet	493
Appendix C: Rock mass classification tables — <i>RMR</i> and <i>Q</i>	495
Index	503