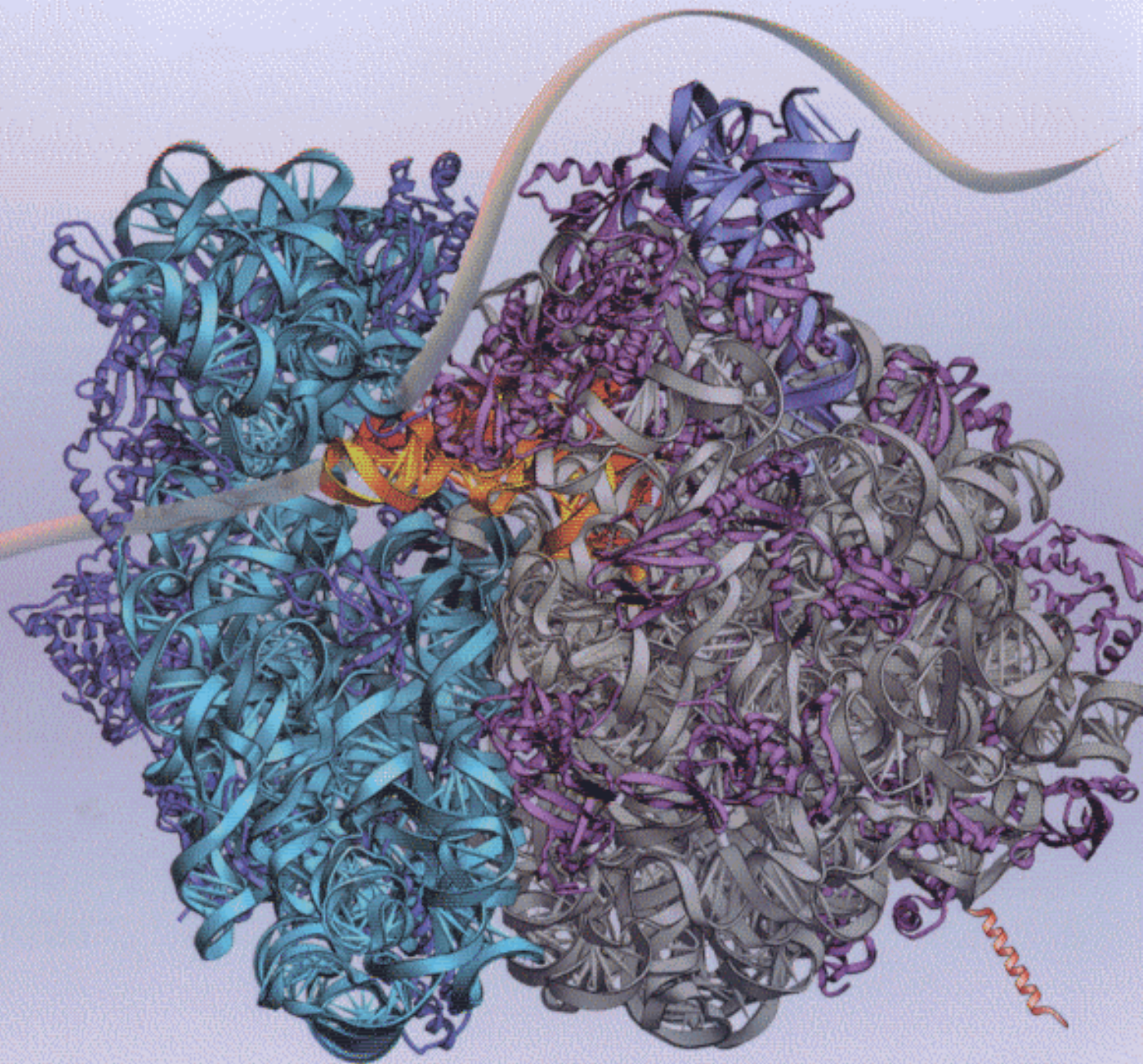


TEXTBOOK OF

FIFTH EDITION

BIOCHEMISTRY

WITH CLINICAL CORRELATIONS



THOMAS M. DEVLIN

Editor

CONTENTS

PART I | STRUCTURE OF MACROMOLECULES 1

1 | EUKARYOTIC CELL STRUCTURE 3

Thomas M. Devlin

- 1.1 OVERVIEW: CELLS AND CELLULAR COMPARTMENTS 4
- 1.2 CELLULAR ENVIRONMENT: WATER AND SOLUTES 6
- 1.3 ORGANIZATION AND COMPOSITION OF EUKARYOTIC CELLS 14
- 1.4 FUNCTIONAL ROLE OF SUBCELLULAR ORGANELLES AND MEMBRANES 16
- 1.5 INTEGRATION AND CONTROL OF CELLULAR FUNCTIONS 23

BIBLIOGRAPHY 24

QUESTIONS AND ANSWERS 24

CLINICAL CORRELATIONS

- 1.1 Blood Bicarbonate Concentration in Metabolic Acidosis 13
- 1.2 Mitochondrial Diseases 19
- 1.3 Lysosomal Enzymes and Gout 20
- 1.4 Lysosomal Acid Lipase Deficiency 21
- 1.5 Peroxisome Biogenesis Disorders (PBD) 22
- 1.6 Apoptosis: Programmed Cell Death 23

2 | DNA AND RNA: COMPOSITION AND STRUCTURE 27

Stephen A. Woski and Francis J. Schmidt

- 2.1 DNA OVERVIEW 28
- 2.2 STRUCTURAL COMPONENTS OF NUCLEIC ACIDS: 29
- 2.3 STRUCTURE OF DNA 33
- 2.4 HIGHER ORDER DNA STRUCTURE 58
- 2.5 DNA SEQUENCE AND FUNCTION 71
- 2.6 RNA OVERVIEW 77
- 2.7 STRUCTURE OF RNA 78
- 2.8 TYPES OF RNA 82

BIBLIOGRAPHY 89

QUESTIONS AND ANSWERS 89

CLINICAL CORRELATIONS

- 2.1 DNA Vaccines 29
- 2.2 Diagnostic Use of DNA Arrays in Medicine and Genetics 45
- 2.3 Antitumor Antibiotics that Change the Shape of DNA 49
- 2.4 Hereditary Persistence of Fetal Hemoglobin 54
- 2.5 Telomerase As a Target for Anticancer Agents 56
- 2.6 Expansion of DNA Triple Repeats and Human Disease 58
- 2.7 Topoisomerases in Treatment of Disease 65
- 2.8 Staphylococcal Resistance to Erythromycin 84

3 | PROTEINS I: COMPOSITION AND STRUCTURE 93

Richard M. Schultz and Michael N. Liebman

- 3.1 FUNCTIONAL ROLES OF PROTEINS IN HUMANS 94
- 3.2 AMINO ACID COMPOSITION OF PROTEINS 95
- 3.3 CHARGE AND CHEMICAL PROPERTIES OF AMINO ACIDS AND PROTEINS 101
- 3.4 PRIMARY STRUCTURE OF PROTEINS 109
- 3.5 HIGHER LEVELS OF PROTEIN ORGANIZATION 112
- 3.6 OTHER TYPES OF PROTEINS 121
- 3.7 FOLDING OF PROTEINS FROM RANDOMIZED TO UNIQUE STRUCTURES: PROTEIN STABILITY 132
- 3.8 DYNAMIC ASPECTS OF PROTEIN STRUCTURE 139
- 3.9 METHODS FOR CHARACTERIZATION, PURIFICATION, AND STUDY OF PROTEIN STRUCTURE AND ORGANIZATION 140

BIBLIOGRAPHY 154

QUESTIONS AND ANSWERS 155

CLINICAL CORRELATIONS

- 3.1 Plasma Proteins in Diagnosis of Disease 107
- 3.2 Differences in Primary Structure of Insulins Used in Treatment of Diabetes Mellitus 111
- 3.3 A Nonconservative Mutation Occurs in Sickle Cell Anemia 112
- 3.4 Symptoms of Diseases of Abnormal Collagen Synthesis 121
- 3.5 Hyperlipidemias 127
- 3.6 Hypolipoproteinemias 128

- 3.7 Glycosylated Hemoglobin, HbA_{1c} 132
 3.8 Proteins as Infectious Agents: Human Transmissible Spongiform Encephalopathies (TSEs) 134
 3.9 Use of Amino Acid Analysis in Diagnosis of Disease 146

PART II | TRANSMISSION OF INFORMATION 159

4 | DNA REPLICATION, RECOMBINATION, AND REPAIR 161

Howard J. Edenberg

- 4.1 COMMON FEATURES OF REPLICATION, RECOMBINATION AND REPAIR 162

- 4.2 DNA REPLICATION 162

- 4.3 RECOMBINATION 186

- 4.4 REPAIR 191

- BIBLIOGRAPHY 204

- QUESTIONS AND ANSWERS 204

CLINICAL CORRELATIONS

- 4.1 Topoisomerases as Drug Targets 175
 4.2 Cancer and the Cell Cycle 180
 4.3 Nucleoside Analogs and Drug Resistance in HIV Therapy 184
 4.4 The Human Genome Project 185
 4.5 Genomic Medicine 186
 4.6 Gene Therapy 191
 4.7 Xeroderma Pigmentosum 196
 4.8 Mismatch Repair and Cancer 198

5 | RNA: TRANSCRIPTION AND RNA PROCESSING 207

Francis J. Schmidt

- 5.1 OVERVIEW 208

- 5.2 MECHANISMS OF TRANSCRIPTION 208

- 5.3 TRANSCRIPTION IN EUKARYOTES 214

- 5.4 RNA PROCESSING 220

- 5.5 RNA EXPORT FROM THE NUCLEUS 228

- 5.6 TRANSCRIPTION-COUPLED DNA REPAIR 228

- 5.7 NUCLEASES AND RNA TURNOVER 229

- BIBLIOGRAPHY 230

- QUESTIONS AND ANSWERS 230

CLINICAL CORRELATIONS

- 5.1 Antibiotics and Toxins that Target RNA Polymerase 211
 5.2 Fragile X Syndrome: A Chromatin Disease? 215
 5.3 Involvement of Transcriptional Factors in Carcinogenesis 217
 5.4 Thalassemia Due to Defects in Messenger RNA Synthesis 224
 5.5 Autoimmunity in Connective Tissue Disease 225
 5.6 Cockayne Syndrome: Transcription-Coupled DNA Repair 229

6 | PROTEIN SYNTHESIS; TRANSLATION AND POSTTRANSLATIONAL MODIFICATIONS 233

Dohn Glitz

- 6.1 OVERVIEW 234

- 6.2 COMPONENTS OF THE TRANSLATIONAL APPARATUS 234

- 6.3 PROTEIN BIOSYNTHESIS 245

- 6.4 PROTEIN MATURATION: FOLDING, MODIFICATION, SECRETION, AND TARGETING 255

- 6.5 MEMBRANE AND ORGANELLE TARGETING 262

- 6.6 FURTHER POSTTRANSLATIONAL PROTEIN MODIFICATIONS 265

- 6.7 REGULATION OF TRANSLATION 271

- 6.8 PROTEIN DEGRADATION AND TURNOVER 272

- BIBLIOGRAPHY 274

- QUESTIONS AND ANSWERS 275

CLINICAL CORRELATIONS

- 6.1 Missense Mutations: Hemoglobin 238
 6.2 Disorders of Terminator Codons 238
 6.3 α -Thalassemia 239
 6.4 Programmed Frameshifting in the Biosynthesis of HIV Proteins 241
 6.5 Mutation in Mitochondrial Ribosomal RNA Results in Antibiotic-induced Deafness 254
 6.6 Deletion of a Codon, Incorrect Post-translational Modification and Premature Protein Degradation: Cystic Fibrosis 256
 6.7 Protein Misfolding and Aggregation: Creutzfeldt-Jacob Disease, Mad Cow Disease, Alzheimer's Disease, and Huntington Disease 257
 6.8 I-Cell Disease 263
 6.9 Familial Hyperproinsulinemia 266
 6.10 Absence of Post-Translational Modification: Multiple Sulfatase Deficiency 267
 6.11 Defects in Collagen Synthesis 270

7 | RECOMBINANT DNA AND BIOTECHNOLOGY 279

Gerald Soslau

- 7.1 OVERVIEW 280

- 7.2 THE POLYMERASE CHAIN REACTION 281

- 7.3 RESTRICTION ENDONUCLEASE AND RESTRICTION MAPS 282

- 7.4 DNA SEQUENCING 284

- 7.5 RECOMBINANT DNA AND CLONING 287

- 7.6 SELECTION OF SPECIFIC CLONED DNA IN LIBRARIES 293

- 7.7 TECHNIQUES FOR DETECTION AND IDENTIFICATION OF NUCLEIC ACIDS AND DNA BINDING PROTEINS 296

- 7.8 COMPLEMENTARY DNA AND COMPLEMENTARY DNA LIBRARIES 302

- 7.9 BACTERIOPHAGE, COSMID, AND YEAST CLONING VECTORS 305
- 7.10 TECHNIQUES TO ANALYZE LONG STRETCHES OF DNA 307
- 7.11 EXPRESSION VECTORS AND FUSION PROTEINS 309
- 7.12 EXPRESSION VECTORS IN EUKARYOTIC CELLS 310
- 7.13 SITE-DIRECTED MUTAGENESIS 312
- 7.14 APPLICATIONS OF RECOMBINANT DNA TECHNOLOGIES 318
- 7.15 MOLECULAR TECHNIQUES APPLIED TO THE WHOLE ANIMAL 321
- 7.16 CONCLUDING REMARKS 323

BIBLIOGRAPHY 324

QUESTIONS AND ANSWERS 325

CLINICAL CORRELATIONS

- 7.1 Polymerase Chain Reaction 282
- 7.2 Restriction Mapping and Evolution 284
- 7.3 Direct Sequencing of DNA For Diagnosis of Genetic Disorders 287
- 7.4 Multiplex PCR Analysis of HGPRTase Gene Defects in Lesch-Nyhan Syndrome 293
- 7.5 Restriction Fragment Length Polymorphisms Determine the Clonal Origin of Tumors 299
- 7.6 Single-Strand Conformational Polymorphism For Detection of Spontaneous Mutations That May Lead to AIDS 300
- 7.7 Site-Directed Mutagenesis of HSV IgD 315
- 7.8 Normal Genes Can Be Introduced Into Cells With Defective Genes in Gene Therapy 320
- 7.9 Transgenic Animal Models 322
- 7.10 Knockout Mice to Define a Role for the P2Y₁ Purinoceptor 323

8 | REGULATION OF GENE EXPRESSION 329

Daniel L. Weeks and John E. Donelson

- 8.1 OVERVIEW 330
- 8.2 UNIT OF TRANSCRIPTION IN BACTERIA: THE OPERON 330
- 8.3 LACTOSE OPERON OF E. COLI 332
- 8.4 TRYPTOPHAN OPERON OF E. COLI 338
- 8.5 OTHER BACTERIAL OPERONS 343
- 8.6 BACTERIAL TRANSPOSONS 345
- 8.7 GENE EXPRESSION IN EUKARYOTES 347
- 8.8 PREINITIATION COMPLEX IN EUKARYOTES: GENERAL TRANSCRIPTION FACTORS, RNA POLYMERASE II AND DNA 350
- 8.9 REGULATION OF EUKARYOTIC GENE EXPRESSION 357

BIBLIOGRAPHY 361

QUESTIONS AND ANSWERS 361

CLINICAL CORRELATIONS

- 8.1 Transmissible Multiple Drug Resistance 346
- 8.2 Rubinstein-Taybi Syndrome 349
- 8.3 Tamoxifen and Targeting of Estrogen Receptor 358
- 8.4 Transcription Factors and Cardiovascular Diseases 359

PART III | FUNCTIONS OF PROTEINS 365**9 | PROTEINS II: STRUCTURE-FUNCTION RELATIONSHIPS IN PROTEIN FAMILIES 367**

Richard M. Schultz and Michael N. Liebman

- 9.1 OVERVIEW 368
- 9.2 ANTIBODY MOLECULES: THE IMMUNOGLOBULIN SUPERFAMILY OF PROTEINS 368
- 9.3 PROTEINS WITH A COMMON CATALYTIC MECHANISM: SERINE PROTEASES 379
- 9.4 DNA-BINDING PROTEINS 387
- 9.5 HEMOGLOBIN AND MYOGLOBIN 393

BIBLIOGRAPHY 409

QUESTIONS AND ANSWERS 410

CLINICAL CORRELATIONS

- 9.1 The Complement Proteins 371
- 9.2 Functions of Different Antibody Classes 372
- 9.3 Immunization 372
- 9.4 Fibrin Formation in a Myocardial Infarct and the Action of Recombinant Tissue Plasminogen Activator (rt-PA) 378
- 9.5 Involvement of Serine Proteases in Tumor Cell Metastasis 379
- 9.6 Hemoglobinopathies 394

10 | ENZYMES: CLASSIFICATION, KINETICS, AND CONTROL 413

J. Lyndal York

- 10.1 GENERAL CONCEPTS 414
- 10.2 CLASSIFICATION OF ENZYMES 415
- 10.3 KINETICS 418
- 10.4 COENZYMES: STRUCTURE AND FUNCTION 426
- 10.5 INHIBITION OF ENZYMES 431
- 10.6 ALLOSTERIC CONTROL OF ENZYME ACTIVITY 436
- 10.7 ENZYME SPECIFICITY: THE ACTIVE SITE 440
- 10.8 MECHANISM OF CATALYSIS 443
- 10.9 CLINICAL APPLICATIONS OF ENZYMES 452
- 10.10 REGULATION OF ENZYME ACTIVITY 459

BIBLIOGRAPHY 460

QUESTIONS AND ANSWERS 460

CLINICAL CORRELATIONS

- 10.1 A Case of Gout Demonstrates Two Phases in the Mechanism of Enzyme Action 423
- 10.2 Physiological Effect of Changes in Enzyme K_m Values 423
- 10.3 Mutation of a Coenzyme-Binding Site Results in Clinical Disease 426
- 10.4 The Design of a Selective Inhibitor 432
- 10.5 A Case of Poisoning 435
- 10.6 A Case of Gout Demonstrates the Difference Between an Allosteric and Substrate-Binding Site 437
- 10.7 Thermal Lability of Glucose-6-Phosphate Dehydrogenase Results in Hemolytic Anemia 451
- 10.8 Alcohol Dehydrogenase Isoenzymes with Different pH Optima 452
- 10.9 Identification and Treatment of an Enzyme Deficiency 454
- 10.10 Ambiguity in the Assay of Mutated Enzymes 454

11 | THE CYTOCHROMES P450 AND NITRIC OXIDE SYNTHASES 465

Richard T. Okita and Bettie Sue Siler Masters

- 11.1 OVERVIEW 466
- 11.2 CYTOCHROME P450: GENERAL CLASSIFICATION AND OVERALL REACTION DESCRIPTION 466
- 11.3 CYTOCHROME P450 ELECTRON TRANSPORT SYSTEMS 468
- 11.4 CYTOCHROME P450: NOMENCLATURE AND TERMINOLOGY 470
- 11.5 SUBSTRATE SPECIFICITY OF CYTOCHROMES P450: PHYSIOLOGICAL FUNCTIONS 471
- 11.6 INHIBITORS OF CYTOCHROME P450 480
- 11.7 REGULATION OF CYTOCHROME P450 EXPRESSION 482
- 11.8 OTHER HEMOPROTEIN AND FLAVOPROTEIN-MEDIATED OXYGENATIONS: SOLUBLE CYTOCHROME P450S AND THE NITRIC OXIDE SYNTHASES 486

BIBLIOGRAPHY 489

QUESTIONS AND ANSWERS 489

CLINICAL CORRELATIONS

- 11.1 Congenital Adrenal Hyperplasia: Deficiency of CYP21A2 474
- 11.2 Steroid Hormone Production During Pregnancy 475
- 11.3 Role of Cytochrome P450 2E1 in Acetaminophen-Induced Liver Toxicity 480
- 11.4 Consequences of P450 Inhibition: Drug-Drug Interactions and Adverse Effects 481
- 11.5 Consequences of Induction of P450 Enzymes 484
- 11.6 Genetic Polymorphisms of P450 Enzymes 485
- 11.7 Clinical Aspects of Nitric Oxide Production 487

12 | BIOLOGICAL MEMBRANES: STRUCTURE AND MEMBRANE TRANSPORT 493

Thomas M. Devlin

- 12.1 OVERVIEW 494
- 12.2 CHEMICAL COMPOSITION OF MEMBRANES 494

- 12.3 MICELLES AND LIPOSOMES 502
- 12.4 STRUCTURE OF BIOLOGICAL MEMBRANES 505
- 12.5 MOVEMENT OF MOLECULES THROUGH MEMBRANES 511
- 12.6 CHANNELS AND PORES 516
- 12.7 PASSIVE MEDIATED TRANSPORT SYSTEMS 519
- 12.8 ACTIVE MEDIATED TRANSPORT SYSTEMS 522
- 12.9 IONOPHORES 529

BIBLIOGRAPHY 531

QUESTIONS AND ANSWERS 531

CLINICAL CORRELATIONS

- 12.1 Liposomes as Carriers of Drugs and Enzymes 504
- 12.2 Abnormalities of Cell Membrane Fluidity in Disease States 510
- 12.3 Cystic Fibrosis and the Cl⁻ Channel 517
- 12.4 Diseases Due to Loss of Membrane Transport Systems 529

PART IV | METABOLIC PATHWAYS AND THEIR CONTROL 535

13 | BIOENERGETICS AND OXIDATIVE METABOLISM 537

Diana S. Beattie

- 13.1 ENERGY-PRODUCING AND ENERGY-UTILIZING SYSTEMS 538
- 13.2 THERMODYNAMIC RELATIONSHIPS AND ENERGY-RICH COMPONENTS 540
- 13.3 SOURCES AND FATES OF ACETYL COENZYME A 547
- 13.4 THE TRICARBOXYLIC ACID CYCLE 552
- 13.5 STRUCTURE AND COMPARTMENTATION BY MITOCHONDRIAL MEMBRANES 561
- 13.6 ELECTRON TRANSPORT CHAIN 564
- 13.7 OXIDATIVE PHOSPHORYLATION 577
- 13.8 MITOCHONDRIAL INNER MEMBRANES CONTAIN SUBSTRATE TRANSPORT SYSTEMS 583
- 13.9 MITOCHONDRIAL GENES AND MITOCHONDRIAL DISEASES 587
- 13.10 REACTIVE OXYGEN SPECIES (ROS) 590

BIBLIOGRAPHY 592

QUESTIONS AND ANSWERS 593

CLINICAL CORRELATIONS

- 13.1 Pyruvate Dehydrogenase Deficiency 552
- 13.2 Fumarase Deficiency 557
- 13.3 Cyanide Poisoning 577
- 13.4 Leber's Hereditary Optic Neuropathy 588
- 13.5 Mitochondrial Myopathies Due to Mutations in Mitochondrial tRNA Genes 589
- 13.6 Exercise Intolerance in Patients With Mutations in Cytochrome b 589
- 13.7 Ischemia/Reperfusion Injury 591

14 | CARBOHYDRATE METABOLISM I: MAJOR METABOLIC PATHWAYS AND THEIR CONTROL 597**Robert A. Harris**

- 14.1 OVERVIEW 598
- 14.2 GLYCOLYSIS 599
- 14.3 THE GLYCOLYTIC PATHWAY 603
- 14.4 REGULATION OF THE GLYCOLYTIC PATHWAY 614
- 14.5 GLUCONEOGENESIS 629
- 14.6 GLYCOGENOLYSIS AND GLYCOGENESIS 643

BIBLIOGRAPHY 661**QUESTIONS AND ANSWERS 662****CLINICAL CORRELATIONS**

- 14.1 Alcohol and Barbiturates' 612
- 14.2 Arsenic Poisoning 614
- 14.3 Fructose Intolerance 616
- 14.4 Diabetes Mellitus 618
- 14.5 Lactic Acidosis 621
- 14.6 Pickled Pigs and Malignant Hyperthermia 621
- 14.7 Angina Pectoris and Myocardial Infarction 622
- 14.8 Pyruvate Kinase Deficiency and Hemolytic Anemia 628
- 14.9 Hypoglycemia and Premature Infants 629
- 14.10 Hypoglycemia and Alcohol Intoxication 643
- 14.11 Glycogen Storage Diseases 647

15 | CARBOHYDRATE METABOLISM II: SPECIAL PATHWAYS AND GLYCOCONJUGATES 665**Nancy B Schwartz**

- 15.1 OVERVIEW 666
- 15.2 PENTOSE PHOSPHATE PATHWAY 666
- 15.3 SUGAR INTERCONVERSIONS AND NUCLEOTIDE-LINKED SUGAR FORMATION 671
- 15.4 BIOSYNTHESIS OF COMPLEX CARBOHYDRATES 678
- 15.5 GLYCOPROTEINS 679
- 15.6 PROTEOGLYCANS 683

BIBLIOGRAPHY 689**QUESTIONS AND ANSWERS 689****CLINICAL CORRELATIONS**

- 15.1 Glucose-6-Phosphate Dehydrogenase: Genetic Deficiency or Presence of Genetic Variants in Erythrocytes 668
- 15.2 Wernicke-Korsakoff Syndrome: Deficiency or Presence of Genetic Variants of Transketolase 670
- 15.3 Carbohydrate-Deficient Glycoprotein Syndromes (CDGS) 672
- 15.4 Essential Fructosuria and Fructose Intolerance: Deficiency of Fructokinase and Fructose 1-Phosphate Aldolase 673
- 15.5 Galactosemia: Inability to Transform Galactose Into Glucose 674
- 15.6 Pentosuria: Deficiency of Xylitol Dehydrogenase 675
- 15.7 Glucuronic Acid: Physiological Significance of Glucuronide Formation 675
- 15.8 Blood Group Substances 679

- 15.9 Common Carbohydrate Marker of Lysosomal Targeting and I-Cell Disease 682
- 15.10 Aspartylglycosylaminuria: Absence of 4-L-Aspartylglycosamine Amidohydrolase 683
- 15.11 Enzymic Defects in Degradation of Glycolipids 683
- 15.12 Heparin Is an Anticoagulant 685
- 15.13 Chondrodystrophies Due to Sulfation Defects 687
- 15.14 Mucopolysaccharidoses 688

16 | LIPID METABOLISM I: UTILIZATION AND STORAGE OF ENERGY IN LIPID FORM 693**J. Denis McGarry**

- 16.1 OVERVIEW 694
- 16.2 CHEMICAL NATURE OF FATTY ACIDS AND ACYLGlycerOLS 695
- 16.3 SOURCES OF FATTY ACIDS 697
- 16.4 STORAGE OF FATTY ACIDS AS TRIACYLGLYCEROLS 706
- 16.5 METHODS OF INTERORGAN TRANSPORT OF FATTY ACIDS AND THEIR PRIMARY PRODUCTS 710
- 16.6 UTILIZATION OF FATTY ACIDS FOR ENERGY PRODUCTION 713

BIBLIOGRAPHY 723**QUESTIONS AND ANSWERS 723****CLINICAL CORRELATIONS**

- 16.1 Obesity 709
- 16.1 Leptin and Obesity 710
- 16.3 Genetic Abnormalities in Lipid-Energy Transport 711
- 16.4 Genetic Deficiencies in Carnitine or Carnitine Palmitoyl Transferase 715
- 16.5 Genetic Deficiencies in the Acyl-CoA Dehydrogenases 716
- 16.6 Refsum's Disease 719
- 16.7 Diabetic Ketoacidosis 721

17 | LIPID METABOLISM II: PATHWAYS OF METABOLISM OF SPECIAL LIPIDS 727**Robert H. Glew**

- 17.1 OVERVIEW 728
- 17.2 PHOSPHOLIPIDS 728
- 17.3 CHOLESTEROL 741
- 17.4 SPHINGOLIPIDS 754
- 17.5 PROSTAGLANDINS AND THROMBOXANES 766
- 17.6 LIPOXYGENASE AND OXY-EICOSATETRAENOIC ACIDS 770

BIBLIOGRAPHY 774**QUESTIONS AND ANSWERS 775****CLINICAL CORRELATIONS**

- 17.1 Respiratory Distress Syndrome 721
- 17.2 Treatment of Hypercholesterolemia 751
- 17.3 Atherosclerosis 752
- 17.4 Diagnosis of Gaucher's Disease in an Adult 765

18 | AMINO ACID METABOLISM 779**Marguerite W. Coomes**

- 18.1 OVERVIEW 780
- 18.2 INCORPORATION OF NITROGEN INTO AMINO ACIDS 781
- 18.3 TRANSPORT OF NITROGEN TO LIVER AND KIDNEY 786
- 18.4 UREA CYCLE 787
- 18.5 SYNTHESIS AND DEGRADATION OF INDIVIDUAL AMINO ACIDS 790

BIBLIOGRAPHY 821

QUESTIONS AND ANSWERS 821

CLINICAL CORRELATIONS

- 18.1 Carbamoylphosphate Synthetase and N-Acetylglutamate Synthetase Deficiencies 790
- 18.2 Deficiencies of Urea Cycle Enzymes 791
- 18.3 Nonketotic Hyperglycinemia 795
- 18.4 Folic Acid Deficiency 797
- 18.5 Phenylketonuria 799
- 18.6 Disorders of Tyrosine Metabolism 801
- 18.7 Parkinson's Disease 801
- 18.8 Hyperhomocysteinemia and Atherogenesis 805
- 18.9 Other Diseases of Sulfur Amino Acids 805
- 18.10 Diseases of Metabolism of Branched-Chain Amino Acids 813
- 18.11 Diseases of Propionate and Methylmalonate Metabolism 814
- 18.12 Diseases Involving Lysine and Ornithine 816
- 18.13 Histidinemia 816
- 18.14 Diseases of Folate Metabolism 817

19 | PURINE AND PYRIMIDINE NUCLEOTIDE METABOLISM 825**Joseph G. Cory**

- 19.1 OVERVIEW 826
- 19.2 METABOLIC FUNCTIONS OF NUCLEOTIDES 826
- 19.3 CHEMISTRY OF NUCLEOTIDES 828
- 19.4 METABOLISM OF PURINE NUCLEOTIDES 830
- 19.5 METABOLISM OF PYRIMIDINE NUCLEOTIDES 839
- 19.6 DEOXYRIBONUCLEOTIDE FORMATION 843
- 19.7 NUCLEOSIDE AND NUCLEOTIDE KINASES 848
- 19.8 NUCLEOTIDE METABOLIZING ENZYMES AS A FUNCTION OF THE CELL CYCLE AND RATE OF CELL DIVISION 848
- 19.9 NUCLEOTIDE COENZYME SYNTHESIS 850
- 19.10 SYNTHESIS AND UTILIZATION OF 5-PHOSPHORIBOSYL-1-PYROPHOSPHATE 853
- 19.11 COMPOUNDS THAT INTERFERE WITH CELLULAR PURINE AND PYRIMIDINE NUCLEOTIDE 854

BIBLIOGRAPHY 858

QUESTIONS AND ANSWERS 858

CLINICAL CORRELATIONS

- 19.1 Gout 834
- 19.2 Lesch-Nyhan Syndrome 836
- 19.3 Increased Cytosolic 5'-Nucleotidase Activity 839
- 19.4 Immunodeficiency Diseases Associated with Defects in Purine Nucleoside Degradation 839
- 19.5 Cancer Patients Undergoing Radiation or Chemotherapy Treatment 840
- 19.6 Subclass of Patients with Autism 840
- 19.7 Hereditary Orotic Aciduria 842

20 | METABOLIC INTERRELATIONSHIPS 861**Robert A. Harris and David W. Crabb**

- 20.1 OVERVIEW 862
- 20.2 STARVE-FEED CYCLE 864
- 20.3 MECHANISMS INVOLVED IN SWITCHING LIVER METABOLISM BETWEEN THE WELL-FED AND STARVED STATES 876
- 20.4 METABOLIC INTERRELATIONSHIPS OF TISSUES IN VARIOUS NUTRITIONAL AND HORMONAL STATES 885

BIBLIOGRAPHY 899

QUESTIONS AND ANSWERS 900

CLINICAL CORRELATIONS

- 20.1 Obesity 862
- 20.2 Protein Malnutrition 863
- 20.3 Starvation 863
- 20.4 Reye's Syndrome 869
- 20.5 Hyperglycemic, Hyperosmolar Coma 874
- 20.6 Hyperglycemia and Protein Glycosylation 875
- 20.7 Type 2 (Noninsulin-Dependent) Diabetes Mellitus 887
- 20.8 Type 1 (Insulin-Dependent) Diabetes Mellitus 888
- 20.9 Complications of Diabetes and the Polyol Pathway 889
- 20.10 Cancer Cachexia 893

PART V | PHYSIOLOGICAL PROCESSES 902**21 | BIOCHEMISTRY OF HORMONES I: POLYPEPTIDE HORMONES 905****Gerald Litwack and Thomas J. Schmidt**

- 21.1 OVERVIEW 906
- 21.2 HORMONES AND THE HORMONAL CASCADE SYSTEM 907
- 21.3 MAJOR POLYPEPTIDE HORMONES AND THEIR ACTIONS 912
- 21.4 GENES AND FORMATION OF POLYPEPTIDE HORMONES 915
- 21.5 SYNTHESIS OF AMINO ACID-DERIVED HORMONES 919
- 21.6 INACTIVATION AND DEGRADATION OF HORMONES 923
- 21.7 CELL REGULATION AND HORMONE SECRETION 925
- 21.8 CYCLIC HORMONAL CASCADE SYSTEMS 931

- 21.9 HORMONE-RECEPTOR INTERACTIONS 936
- 21.10 STRUCTURE OF RECEPTORS: β -ADRENERGIC RECEPTOR 940
- 21.11 INTERNALIZATION OF RECEPTORS 941
- 21.12 INTRACELLULAR ACTION: PROTEIN KINASES 943
- 21.13 ONCOGENES AND RECEPTOR FUNCTIONS 952

BIBLIOGRAPHY 955

QUESTIONS AND ANSWERS 955

CLINICAL CORRELATIONS

- 21.1 Testing Activity of the Anterior Pituitary 910
- 21.2 Hypopituitarism 912
- 21.3 Lithium Treatment of Manic Depressive Illness: The Phosphatidylinositol Cycle 931
- 21.4 Decreased Insulin Receptor Kinase Activity in Gestational Diabetes Mellitus 946
- 21.5 Advances in Breast Cancer Chemotherapy 955

**22 | BIOCHEMISTRY OF HORMONES II:
STEROID HORMONES 959**

Gerald Litwack and Thomas J. Schmidt

- 22.1 OVERVIEW 960
- 22.2 STRUCTURES OF STEROID HORMONES 960
- 22.3 BIOSYNTHESIS OF STEROID HORMONES 963
- 22.4 METABOLIC INACTIVATION OF STEROID HORMONES 967
- 22.5 CELL-CELL COMMUNICATION AND CONTROL OF SYNTHESIS AND RELEASE OF STEROID HORMONES 967
- 22.6 TRANSPORT OF STEROID HORMONES IN BLOOD 973
- 22.7 STEROID HORMONE RECEPTORS 974
- 22.8 RECEPTOR ACTIVATION UPREGULATION AND DOWNREGULATION 982
- 22.9 SPECIFIC EXAMPLES OF STEROID HORMONE ACTION AT THE CELL LEVEL: PROGRAMMED DEATH 985

BIBLIOGRAPHY 986

QUESTIONS AND ANSWERS 986

CLINICAL CORRELATIONS

- 22.1 Oral Contraception 972
- 22.2 Apparent Mineralocorticoid Excess Syndrome 977
- 22.3 Mineralocorticoid Receptor Mutation Results In Hypertension and Toxemia of Pregnancy 984
- 22.4 Programmed Cell Death In the Ovarian Cycle 985

23 | MOLECULAR CELL BIOLOGY 989

Thomas E. Smith

- 23.1 OVERVIEW 990
- 23.2 NERVOUS TISSUE: METABOLISM AND FUNCTION 990

- 23.3 THE EYE: METABOLISM AND VISION 1002
- 23.4 MUSCLE CONTRACTION 1016
- 23.5 MECHANISM OF BLOOD COAGULATION 1031
- BIBLIOGRAPHY 1049**

QUESTIONS AND ANSWERS 1050

CLINICAL CORRELATIONS

- 23.1 Lambert-Eaton Myasthenic Syndrome 997
- 23.2 Myasthenia Gravis: A Neuromuscular Disorder 999
- 23.3 Macula Degeneration and Other Causes of Loss of Vision 1006
- 23.4 Niemann-Pick Disease and Retinitis Pigmentosa 1007
- 23.5 Retinitis Pigmentosa from Mutation of the Gene for Peripherin 1009
- 23.6 Chromosomal Location of Genes for Vision 1015
- 23.7 Familial Hypertropic Cardiomyopathies and Mutations in Muscle Proteins 1019
- 23.8 Mutations in Actin and Dilated Cardiomyopathy 1022
- 23.9 Troponin Subunits as Markers for Myocardial Infarction 1024
- 23.10 Voltage-Gated Ion Channelopathies 1026
- 23.11 Ion Channels and Cardiac Muscle Disease 1027
- 23.12 Intrinsic Pathway Defects - Prekallikrein Deficiency 1034
- 23.13 Classic Hemophilia 1039
- 23.14 Thrombosis and Defects of the Protein C Pathway 1044

24 | IRON AND HEME METABOLISM 1053

William M. Awad, Jr.

- 24.1 IRON METABOLISM: OVERVIEW 1054
- 24.2 IRON-CONTAINING PROTEINS 1054
- 24.3 INTESTINAL ABSORPTION OF IRON 1057
- 24.4 MOLECULAR REGULATION OF IRON UTILIZATION 1059
- 24.5 IRON DISTRIBUTION AND KINETICS 1061
- 24.6 HEME BIOSYNTHESIS 1063
- 24.7 HEME CATABOLISM 1071

BIBLIOGRAPHY 1076

QUESTIONS AND ANSWERS 1077

CLINICAL CORRELATIONS

- 24.1 Iron Overload and Infection 1055
- 24.2 Iron-Sulfur Cluster Synthesis and Human Disease 1057
- 24.3 Friedreich Ataxia 1057
- 24.4 Duodenal Iron Absorption 1058
- 24.5 Mutant Iron-Responsive Element 1060
- 24.6 Ceruloplasmin Deficiency 1061
- 24.7 Iron-deficiency Anemia 1062
- 24.8 Hemochromatosis Type I: Molecular Genetics and the Issue of Iron-Fortified Diets 1062

- 24.9 Hemochromatosis Type II 1063
- 24.10 Acute Intermittent Porphyria 1066
- 24.11 Neonatal Isoimmune Hemolysis 1074
- 24.12 Bilirubin UDP-Glucuronosyltransferase Deficiency 1075
- 24.13 Elevation of Serum Conjugated Bilirubin 1075

25 | DIGESTION AND ABSORPTION OF BASIC NUTRITIONAL CONSTITUENTS 1081

Ulrich Hopfer

- 25.1 OVERVIEW 1082
- 25.2 DIGESTION: GENERAL CONSIDERATIONS 1084
- 25.3 EPITHELIAL TRANSPORT 1088
- 25.4 DIGESTION AND ABSORPTION OF PROTEINS 1097
- 25.5 DIGESTION AND ABSORPTION OF CARBOHYDRATES 1100
- 25.6 DIGESTION AND ABSORPTION OF LIPIDS 1104
- 25.7 BILE ACID METABOLISM 1110
- BIBLIOGRAPHY 1112
- QUESTIONS AND ANSWERS 1113

CLINICAL CORRELATIONS

- 25.1 Familial Chloridorrhea Causes Metabolic Alkalosis 1092
- 25.2 Cystic Fibrosis 1093
- 25.3 Bacterial Toxigenic Diarrheas and Electrolyte Replacement Therapy 1094
- 25.4 Neutral Amino Aciduria: Hartnup Disease 1100
- 25.5 Disaccharidase Deficiency 1103
- 25.6 Pharmacological Interventions to Prevent Fat Absorption and Obesity 1106
- 25.7 Cholesterol Stones 1109
- 25.8 A- β -Lipoproteinemia 1110

26 | PRINCIPLES OF NUTRITION I: MACRONUTRIENTS 1117

Stephen G. Chaney

- 26.1 OVERVIEW 1118
- 26.2 ENERGY METABOLISM 1118
- 26.3 PROTEIN METABOLISM 1119
- 26.4 PROTEIN-ENERGY MALNUTRITION 1123
- 26.5 EXCESS PROTEIN-ENERGY INTAKE 1123
- 26.6 CARBOHYDRATES 1125
- 26.7 FATS 1126
- 26.8 FIBER 1127
- 26.9 COMPOSITION OF MACRONUTRIENTS IN THE DIET 1128
- BIBLIOGRAPHY 1133
- QUESTIONS AND ANSWERS 1133

CLINICAL CORRELATIONS

- 26.1 Vegetarian Diets and Protein-Energy Requirements 1121
- 26.2 Low-protein Diets and Renal Disease 1121
- 26.3 Providing Adequate Protein and Calories for Hospitalized Patients 1123
- 26.4 Carbohydrate Loading and Athletic Endurance 1125
- 26.5 High-Carbohydrate Versus High-Fat Diet for Diabetics 1126
- 26.6 Polyunsaturated Fatty Acids and Risk Factors for Heart Disease 1129
- 26.7 Metabolic Adaptation: Relationship Between Carbohydrate Intake and Serum Triacylglycerols 1130

27 | PRINCIPLES OF NUTRITION II: MICRONUTRIENTS 1137

Stephen G. Chaney

- 27.1 OVERVIEW 1138
- 27.2 ASSESSMENT OF MALNUTRITION 1138
- 27.3 DIETARY REFERENCE INTAKES 1138
- 27.4 FAT-SOLUBLE VITAMINS 1139
- 27.5 WATER-SOLUBLE VITAMINS 1148
- 27.6 ENERGY-RELEASING WATER-SOLUBLE VITAMINS 1148
- 27.7 HEMATOPOIETIC WATER-SOLUBLE VITAMINS 1154
- 27.8 OTHER WATER-SOLUBLE VITAMINS 1157
- 27.9 MACROMINERALS 1159
- 27.10 TRACE MINERALS 1161
- 27.11 THE AMERICAN DIET: FACT AND FALLACY 1164
- 27.12 ASSESSMENT OF NUTRITIONAL STATUS IN CLINICAL PRACTICE 1164

BIBLIOGRAPHY 1166

QUESTIONS AND ANSWERS 1167

CLINICAL CORRELATIONS

- 27.1 Nutritional Considerations In Cystic Fibrosis 1142
- 27.2 Renal Osteodystrophy 1143
- 27.3 Nutritional Considerations in the Newborn 1147
- 27.4 Anticonvulsant Drugs and Vitamin Requirements 1148
- 27.5 Nutritional Considerations in Alcoholics 1150
- 27.6 Vitamin B₆ Requirements In Users of Oral Contraceptives 1153
- 27.7 Gene Polymorphisms and Folic Acid Requirements 1155
- 27.8 Diet and Osteoporosis 1160
- 27.9 Nutritional Needs of Elderly Persons 1165

APPENDIX

REVIEW OF ORGANIC CHEMISTRY 1169

Caron N. Angstadt

INDEX 1181