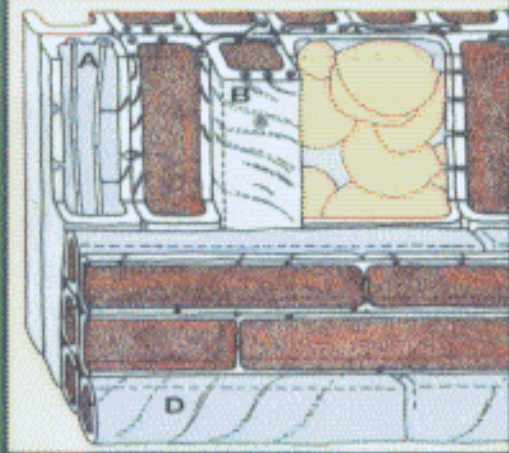
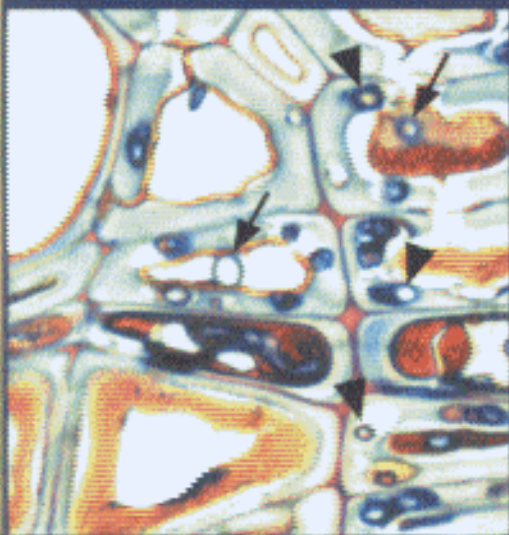


F. W. M. R. Schwarze  
J. Engels  
C. Mattheck

# Fungal Strategies of Wood Decay in Trees



Springer

---

# Contents

<b>1</b>	<b>Introduction</b> .....	1
<b>2</b>	<b>Fundamental Aspects</b> .....	5
2.1	Wood Anatomy .....	5
2.1.1	Structure of the Lignified Cell Wall .....	5
2.1.2	Middle Lamella .....	6
2.1.3	Primary Wall .....	8
2.1.4	Secondary Wall .....	8
2.1.5	New Information on the Structure of the S <sub>2</sub> Layer ..	10
2.2	Mechanical Model for Wood .....	13
2.3	Types of Wood Decay .....	16
2.3.1	Brown Rot .....	17
2.3.2	White Rot: the Whole Spectrum of Diversity .....	22
2.3.2.1	White Rot .....	22
2.3.2.2	White Rot: Selective Delignification .....	22
2.3.2.3	White Rot: Simultaneous Rot .....	25
2.3.3	Soft Rot .....	26
2.3.3.1	Soft Rot in Living Trees Caused by an Ascomycete ..	30
2.3.3.2	Basidiomycetes as Facultative Soft-Rotters .....	30
<b>3</b>	<b>Examination, Importance and Mechanical Effects of Wood-Decay Fungi in the Living Trees</b> .....	33
3.1	Fungus Identification .....	33
3.1.1	Basidiomycetes .....	34
3.1.2	Ascomycetes .....	36
3.1.3	Differentiation and Asexual Reproduction of Mycelium .....	37
3.2	Classification of Wood-Decay Fungi According to Their Main Occurrence in the Tree .....	37
3.2.1	Colonization Strategies of Stem-Decaying Fungi ...	40
3.2.2	Colonization Strategies of Root-Decaying Fungi ...	43
3.2.2.1	Number of Fungal Fruit Bodies and Their Predictive Value .....	46
3.2.2.2	Fungus Species Which Invade the Stemwood as Well as the Roots .....	47

3.2.2.3	Root Fungi Found Mainly Only in the Roots . . . . .	48
3.2.2.4	Wood-Decay Patterns Observable in the Roots . . . . .	48
3.2.3	Factors Influencing Wood Degradation . . . . .	49
3.2.4	Symptoms of Damage by Fungal Pathogens . . . . .	51
3.2.4.1	Symptoms of Damage by Stem and Root-Decaying Fungi . . . . .	56
3.3	Fungus-Host Combinations . . . . .	59
3.3.1	<i>Fomes fomentarius</i> . . . . .	59
3.3.1.1	Distribution and Hosts . . . . .	59
3.3.1.2	Fruit Bodies . . . . .	59
3.3.1.3	Possibilities of Misidentification . . . . .	61
3.3.1.4	Useful Information . . . . .	61
3.3.1.5	Appearance of the Decay . . . . .	61
3.3.1.6	Pattern of Wood Decay by <i>Fomes fomentarius</i> (on Beech and Oak) . . . . .	62
3.3.2	<i>Inonotus hispidus</i> . . . . .	64
3.3.2.1	Distribution and Hosts . . . . .	64
3.3.2.2	Fruit Bodies . . . . .	65
3.3.2.3	Useful Information . . . . .	65
3.3.2.4	Appearance of the Decay . . . . .	65
3.3.2.5	Pattern of Wood Decay by <i>Inonotus hispidus</i> (on London Plane and Ash) . . . . .	67
3.3.3	<i>Laetiporus sulphureus</i> . . . . .	70
3.3.3.1	Distribution and Hosts . . . . .	70
3.3.3.2	Fruit Bodies . . . . .	71
3.3.3.3	Useful Information . . . . .	71
3.3.3.4	Appearance of the Decay . . . . .	73
3.3.3.5	Pattern of Wood Decay by <i>Laetiporus sulphureus</i> (on <i>Robinia</i> and Oak) . . . . .	73
3.3.4	<i>Fistulina hepatica</i> . . . . .	76
3.3.4.1	Distribution and Hosts . . . . .	76
3.3.4.2	Fruit Bodies . . . . .	76
3.3.4.3	Useful Information . . . . .	78
3.3.4.4	Appearance of the Decay . . . . .	78
3.3.4.5	Pattern of Wood Decay by <i>Fistulina hepatica</i> (on Oak) . . . . .	80
3.3.5	<i>Ustulina deusta</i> . . . . .	81
3.3.5.1	Distribution and Hosts . . . . .	81
3.3.5.2	Fruit Bodies . . . . .	82
3.3.5.3	Useful Information . . . . .	84
3.3.5.4	Appearance of the Decay by <i>Ustulina deusta</i> . . . . .	84
3.3.5.5	Pattern of Wood Decay by <i>Ustulina deusta</i> (on Beech and Lime) . . . . .	85
3.3.6	<i>Polyporus squamosus</i> . . . . .	89
3.3.6.1	Distribution and Hosts . . . . .	89
3.3.6.2	Fruit Bodies . . . . .	89

3.3.6.3	Useful Information .....	89
3.3.6.4	Appearance of the Decay .....	90
3.3.6.5	Pattern of Wood Decay by <i>Polyporus squamosus</i> (on Lime and London Plane) .....	90
3.3.7	<i>Phellinus robustus</i> .....	94
3.3.7.1	Distribution and Hosts .....	94
3.3.7.2	Fruit Bodies .....	94
3.3.7.3	Possibilities of Misidentification .....	96
3.3.7.4	Useful Information .....	96
3.3.7.5	Appearance of the Decay .....	96
3.3.7.6	Pattern of Wood Decay by <i>Phellinus robustus</i> (on Oak) .....	98
3.3.8	<i>Fomitopsis pinicola</i> .....	98
3.3.8.1	Distribution and Hosts .....	98
3.3.8.2	Fruit Bodies .....	99
3.3.8.3	Useful Information .....	99
3.3.8.4	Appearance of the Decay .....	99
3.3.8.5	Pattern of Wood Decay by <i>Fomitopsis pinicola</i> (on Spruce and Beech) .....	101
3.3.9	<i>Heterobasidion annosum</i> .....	104
3.3.9.1	Distribution and Hosts .....	104
3.3.9.2	Fruit Bodies .....	104
3.3.9.3	Possibilities of Misidentification .....	106
3.3.9.4	Useful Information .....	106
3.3.9.5	Appearance of the Decay .....	107
3.3.9.6	Pattern of Wood Decay by <i>Heterobasidion annosum</i> (on Spruce and Pine) .....	107
3.3.10	<i>Meripilus giganteus</i> .....	110
3.3.10.1	Distribution and Hosts .....	110
3.3.10.2	Fruit Bodies .....	110
3.3.10.3	Useful Information .....	112
3.3.10.4	Appearance of the Decay .....	113
3.3.10.5	Pattern of Wood Decay by <i>Meripilus giganteus</i> (on Beech and Lime) .....	113
3.3.11	<i>Armillaria</i> spp. ....	116
3.3.11.1	Distribution and Hosts .....	116
3.3.11.2	Fruit Bodies .....	117
3.3.11.3	Useful Information .....	117
3.3.11.4	Appearance of the Decay .....	118
3.3.11.5	Pattern of Wood Decay by <i>Armillaria</i> ( <i>Armillaria</i> <i>ostoyae</i> on Spruce; <i>Armillaria mellea</i> on Maple) ...	120
3.3.12	<i>Ganoderma</i> spp. ....	122
3.3.12.1	Distribution and Hosts .....	122
3.3.12.2	Fruit Bodies .....	122
3.3.12.3	Useful Information .....	123
3.3.12.4	Appearance of the Decay .....	124

3.3.12.5	Pattern of Wood Decay by <i>Ganoderma</i> spp. ( <i>Ganoderma pfeifferi</i> on Oak; <i>Ganoderma applanatum</i> on Broad-Leaved Lime) . . .	124
3.3.13	<i>Grifola frondosa</i> . . . . .	128
3.3.13.1	Distribution and Hosts . . . . .	128
3.3.13.2	Fruit Bodies . . . . .	129
3.3.13.3	Useful Information . . . . .	129
3.3.13.4	Appearance of the Decay . . . . .	129
3.3.13.5	Pattern of Wood Decay by <i>Grifola frondosa</i> (on Oak) . . . . .	131
3.3.14	<i>Inonotus dryadeus</i> . . . . .	131
3.3.14.1	Distribution and Hosts . . . . .	131
3.3.14.2	Fruit Bodies . . . . .	133
3.3.14.3	Useful Information . . . . .	133
3.3.14.4	Appearance of the Decay . . . . .	136
3.3.15	<i>Pholiota squarrosa</i> . . . . .	138
3.3.15.1	Distribution and Hosts . . . . .	138
3.3.15.2	Fruit Bodies . . . . .	138
3.3.15.3	Useful Information . . . . .	138
3.3.15.4	Appearance of the Decay . . . . .	138
<b>4</b>	<b>Host-Fungus Interactions: Development and Prognosis of Wood Decay in the Sapwood</b> . . . . .	<b>139</b>
4.1	Introduction . . . . .	139
4.2	The CODIT Model . . . . .	141
4.3	Host Response Mechanisms in the Sapwood . . . . .	143
4.4	Different Response Mechanisms in Heartwood and Sapwood . . . . .	147
4.5	The Importance of Walls 1–3 from the Mycological Standpoint . . . . .	148
4.5.1	The Importance of Walls 1–3 of the CODIT Model in Heartwood and Ripewood and Their Anatomical Interpretation . . . . .	148
4.5.2	The Importance of Walls 1–3 in Sapwood: the Reaction Zones . . . . .	151
4.6	Reaction Zone Penetration, as Exemplified by <i>Inonotus hispidus</i> . . . . .	153
4.6.1	<i>Inonotus hispidus</i> in a London Plane Tree . . . . .	153
4.7	Example of Strong Compartmentalization of <i>Ustulina deusta</i> in a Healthy Beech Tree . . . . .	155
4.8	Examples of Weak Compartmentalization of <i>Ustulina deusta</i> in a Weakened Beech Tree . . . . .	156

---

4.9	<i>Ustulina deusta</i> in Lime Trees .....	158
4.10	The Behavior of Strong and Weak Compartmentalizers in the Host-Fungus Interaction .....	158
4.11	Xylem Rays as the Tree's Achilles Heel in Host-Fungus Interactions .....	160
4.12	Cracks as 'Motorways' for Fungi .....	162
4.13	The Importance of the Barrier Zone (Wall 4) .....	163
	<b>Postscript</b> .....	169
	<b>References</b> .....	171
	<b>Index</b> .....	183