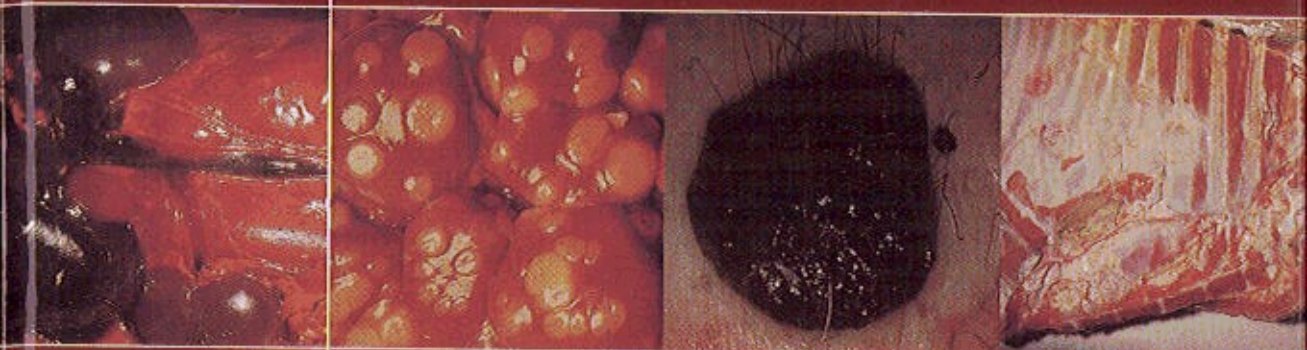


Seventh  
Edition

W. G. Wilson



# Wilson's Practical Meat Inspection



Blackwell  
Publishing

# Contents

<i>Preface to Seventh Edition</i>	v
<i>Preface to First Edition</i>	vi
1 Cells and Tissues	1
<b>Systems of the Body</b>	<b>7</b>
2 Skeletal System	9
3 Muscular System	20
4 Circulatory System	21
5 Lymphatic System	28
6 Respiratory System	39
7 Digestive System	45
8 Urogenital System	59
9 Nervous System	68
10 Endocrine System	72
<b>Slaughter and Age/Sex Determination</b>	<b>77</b>
11 The Slaughter of Animals	79
12 Sex Characteristics and Estimation of Age	87
<b>Pathology and Judgement in Disease</b>	<b>95</b>
13 Abnormal and General Pathological Conditions	97
14 Specific Diseases	112
15 Parasitic Diseases	137
16 Affections of Specific Parts and Tumours	163
17 Illegal Meat	191
<b>Butchers' Joints and Meat Products</b>	<b>199</b>
18 Butchers' Joints	201
19 Meat Preservation and Meat Products	206
20 Food Poisoning from Meat Products	228
<b>Rabbits</b>	<b>233</b>
21 Diseases of Rabbits	235
<b>Deer and Venison</b>	<b>239</b>
22 Deer and Venison	241

<b>Poultry</b>	<b>245</b>
23 Sex and Age Characteristics of Poultry	247
24 Anatomy of the Fowl	251
25 Slaughter and Dressing of Poultry	265
26 Diseases of Poultry	270
27 Affections of Specific Parts of Poultry	287
<i>Appendix 1: Legislation</i>	291
<i>Appendix 2: Colloquial Terms</i>	292
<i>Bibliography</i>	295
<i>Index</i>	297
<i>Colour plate section follows page 122.</i>	