

THIRD EDITION

# Pumping Station Design

Editor-in-Chief

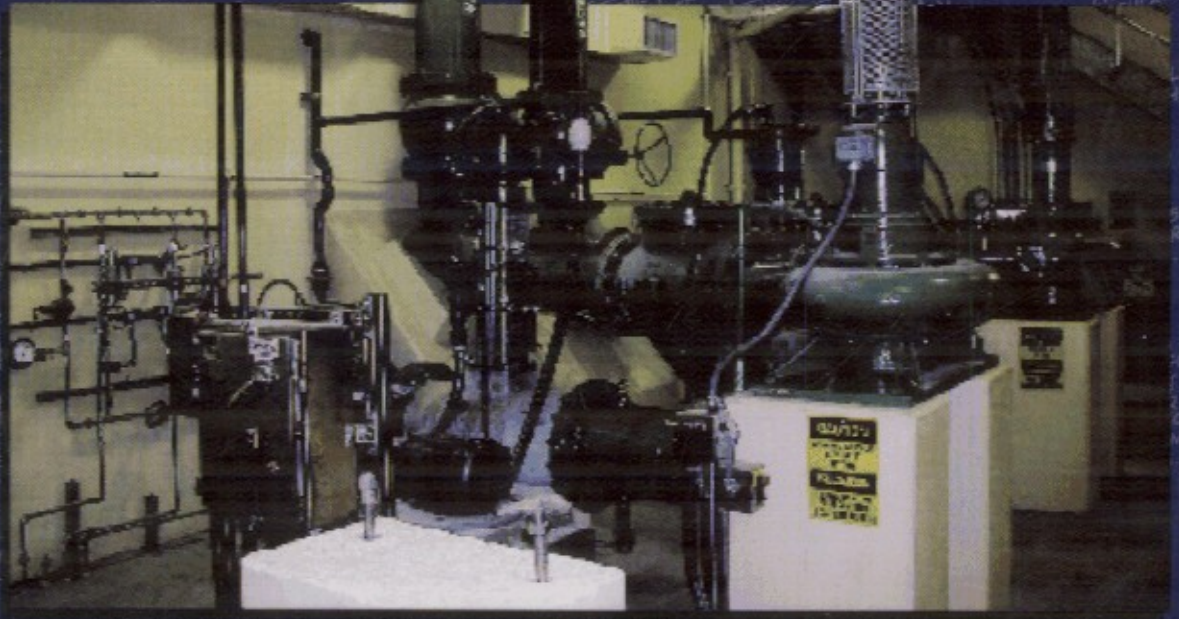
**GARR M. JONES**

Co-Editors

**ROBERT L. SANKS**

**GEORGE TCHOBANOGLOUS**

**BAYARD E. BOSSERMAN II**



**B  
H**

# Contents

<b>Preface to the First Edition</b>	<b>xv</b>
<b>Preface to the Second Edition</b>	<b>xvii</b>
<b>Preface to the Third Edition</b>	<b>xix</b>
<b>Acknowledgments</b>	<b>xx</b>
<b>Authors and Contributors</b>	<b>xxi</b>

## **Chapter 1** **Introduction 1.1**

ROBERT L. SANKS

1-1	Authors and Contributors	1.1
1-2	Responsibilities of Project Engineers	1.1
1-3	Units	1.2
1-4	Standards and Codes	1.2
1-5	Manufacturers' Recommendations	1.2
1-6	Safety	1.3
1-7	How to Utilize This Book	1.3
1-8	How to Select Consulting Engineering Firms	1.4
1-9	Value Engineering	1.5
1-10	Ensuring Quality and Economy	1.6
1-11	Avoiding Litigation	1.7
1-12	Library	1.8
1-13	Operator Training	1.8
1-14	References	1.9

## **Chapter 2** **Nomenclature 2.1**

MAYO GOTLIEBSON, CARL W. REH, AND ROBERT L. SANKS

2-1	Abbreviations	2.1
2-2	Definitions	2.8
2-3	Symbols	2.14
2-4	Supplementary Reading	2.14

## **Chapter 3** **Flow in Conduits 3.1**

ROBERT L. SANKS

3-1	Fundamentals of Hydraulics	3.1
3-2	Friction Losses in Piping	3.4
3-3	Pipe Tables	3.9
3-4	Headlosses in Pipe Fittings	3.11
3-5	Friction Losses in Open Channel Flow	3.12
3-6	Energy in Pressurized Pipe Flow	3.14
3-7	Energy in Open Channel Flow	3.16
3-8	Unbalanced Hydraulic Forces	3.20
3-9	Field Measurement of Pipe Diameter and Friction Coefficient	3.23
3-10	Flow of Sludges	3.24
3-11	Unsteady Flow	3.24
3-12	Model Studies	3.33
3-13	Computational Fluid Dynamics (CFD)	3.35
3-14	References	3.36

## **Chapter 4 Piping 4.1**

BAYARD E. BOSSERMAN II, JAMES C. DOWELL, ELIZABETH M. HUNING, AND ROBERT L. SANKS

- 4-1 Selection of Exposed Pipe 4.2
- 4-2 Selection of Buried Piping 4.11
- 4-3 Ductile Iron Pipe (DIP) 4.17
- 4-4 Steel Pipe 4.19
- 4-5 Plastic Pipe 4.21
- 4-6 Asbestos Cement Pipe (ACP) 4.24
- 4-7 Reinforced Concrete Pressure Pipe (RCPP) 4.24
- 4-8 Design of Piping 4.25
- 4-9 Special Piping and Plumbing 4.35
- 4-10 References 4.40
- 4-11 Supplementary Reading 4.41

## **Chapter 5 Valves 5.1**

CARL N. ANDERSON, BAYARD E. BOSSERMAN II, AND CHARLES D. MORRIS

- 5-1 Designing for Quality 5.1
- 5-2 Isolation Valves 5.2
- 5-3 Sluice Gates, Shear Gates, Flap Valves, and Stop Plates 5.14
- 5-4 Check Valves 5.15
- 5-5 Control Valves 5.21
- 5-6 Valve Actuators 5.24
- 5-7 Air and Vacuum Valves 5.27
- 5-8 Materials of Construction 5.29
- 5-9 Installation of Valves 5.30
- 5-10 Corrosion Protection 5.31
- 5-11 References 5.31

## **Chapter 6 Fundamentals of Hydraulic Transients 6.1**

BAYARD E. BOSSERMAN II AND WILLIAM A. HUNT

- 6-1 Introduction 6.1
- 6-2 Nomenclature 6.2
- 6-3 Methods of Analysis 6.2
- 6-4 Surge Concepts in Frictionless Flow 6.3
- 6-5 Slow Closure of Valves 6.7
- 6-6 Surge Concepts in Flow with Friction 6.10
- 6-7 Column Separation 6.11

- 6-8 Criteria for Conducting Transient Analysis 6.12
- 6-9 References 6.13

## **Chapter 7 Control of Hydraulic Transients 7.1**

BAYARD E. BOSSERMAN II

- 7-1 Overview of Hydraulic Transient Control Strategies 7.1
- 7-2 Control of Pumps 7.8
- 7-3 Control Tanks 7.9
- 7-4 Valves for Transient Control 7.11
- 7-5 Containment of Transients 7.13
- 7-6 Surge Control for Water Pumping Stations 7.15
- 7-7 Surge Control for Raw Wastewater Pumping Stations 7.18
- 7-8 Pipeline Design 7.19
- 7-9 Computer Analysis 7.21
- 7-10 Transients in Distribution Systems 7.23
- 7-11 References 7.26

## **Chapter 8 Electrical Fundamentals and Power System Principles 8.1**

STANLEY S. HONG, PHILIP A. HUFF, AND PAUL C. LEACH

- 8-1 Definitions and Code References 8.1
- 8-2 Electrical Fundamentals 8.2
- 8-3 Power and Control System Elements 8.9
- 8-4 Standby Generators and Auxiliaries 8.26
- 8-5 Grounding 8.29
- 8-6 Lighting and Power Outlets 8.32
- 8-7 Electrical Circuit Diagrams 8.35
- 8-8 Power and Control System Practices 8.37
- 8-9 Reference 8.41
- 8-10 Supplementary Readings 8.41

## **Chapter 9 Electrical Design 9.1**

STANLEY S. HONG, PHILIP A. HUFF, AND PAUL C. LEACH

- 9-1 Final Construction Drawings 9.1
- 9-2 Specifications 9.3
- 9-3 Contacting Utilities 9.4

- 9-4 Construction Information to Utilities 9.5
- 9-5 Load Estimation 9.5
- 9-6 Overcurrent Protection and Conductor Sizing 9.8
- 9-7 Lighting 9.14
- 9-8 Power Factor 9.16
- 9-9 Engine-Generator Sizing 9.17
- 9-10 Short Circuit Current Calculations 9.20
- 9-11 Harmonics 9.22
- 9-12 Construction Service 9.22
- 9-13 References 9.24

## Chapter 10

### Performance of Centrifugal Pumps 10.1

PAUL COOPER AND GEORGE TCHOBANOGLIOUS

- 10-1 Classification of Centrifugal Pumps 10.1
- 10-2 Pump Application Terminology, Equations, and Performance Curves 10.1
- 10-3 Pump Operating Characteristics 10.8
- 10-4 Cavitation 10.16
- 10-5 Pump Characteristic Curves 10.27
- 10-6 Pump Operating Regions 10.30
- 10-7 Elementary Pump System Analysis 10.32
- 10-8 Practical Pumping System H-Q Curve Analysis 10.37
- 10-9 Complex Pumping System H-Q Curves 10.43
- 10-10 References 10.43

## Chapter 11

### Types of Pumps 11.1

RICHARD O. GARBUS

- 11-1 General Classifications of Pumps 11.1
- 11-2 Classification of Centrifugal Pumps 11.6
- 11-3 Construction of Centrifugal Pumps 11.7
- 11-4 Overhung-Impeller Pumps 11.17
- 11-5 Impeller-between-Bearings Pumps 11.25
- 11-6 Classification of Vertical Pumps 11.25
- 11-7 Construction of Vertical Pumps 11.27
- 11-8 Types of Vertical Pumps 11.31
- 11-9 Positive-Displacement Pumps 11.33
- 11-10 Special Pumps 11.35
- 11-11 Summary of Typical Pump Applications 11.40
- 11-12 References 11.41
- 11-13 Supplementary Reading 11.41

## Chapter 12

### Pumps: Intake Design, Selection, and Installation 12.1

GARR M. JONES AND ROBERT L. SANKS

- 12-1 Design of Pump Intakes 12.2
- 12-2 Pump Intake Design Standards 12.2
- 12-3 Types of Pump Intake Basins 12.4
- 12-4 Model Study 12.11
- 12-5 Evolution of Trench-Type Wet Wells 12.12
- 12-6 Summary of Trench-Type Wet Well Characteristics 12.26
- 12-7 Trench-Type Wet Well Design 12.28
- 12-8 Wet Wells in Small Lift Stations 12.44
- 12-9 Principles of Pump Selection 12.47
- 12-10 Step-by-Step Pump Selection and Installation Procedure 12.54
- 12-11 Reducing Cost of Ownership 12.59
- 12-12 Installation Design 12.61
- 12-13 References 12.81

## Chapter 13

### Electric Motors 13.1

PAUL C. LEACH AND ALAN VAUSE

- 13-1 General 13.1
- 13-2 Applications of Motors 13.3
- 13-3 Fundamentals 13.6
- 13-4 Types of Motors for Pump Drivers 13.9
- 13-5 Characteristics of Squirrel-Cage Induction Motors 13.12
- 13-6 Motor Speed 13.12
- 13-7 Motor Voltage 13.13
- 13-8 Enclosures 13.14
- 13-9 Insulation 13.15
- 13-10 Squirrel-Cage Motors 13.16
- 13-11 Frequency of Motor Starts 13.20
- 13-12 Miscellaneous Motor Features 13.21
- 13-13 Specifying Pumping Unit Drivers 13.23
- 13-14 Definite Purpose Induction Motors 13.24
- 13-15 Design Checklist 13.28
- 13-16 References 13.29

## Chapter 14

### Engines 14.1

GARR M. JONES AND JAMES W. SCHETTLER

- 14-1 Selecting an Engine Drive 14.1
- 14-2 Duty Cycle 14.2
- 14-3 Fuel for Engines 14.4

- 14-4 Aspiration 14.7
- 14-5 Types of Engines 14.7
- 14-6 Rich-Burn or Lean-Burn 14.8
- 14-7 Application Criteria 14.8
- 14-8 Starting Methods 14.10
- 14-9 Cooling Methods 14.10
- 14-10 Controls 14.10
- 14-11 Governors for Engine Control 14.11
- 14-12 Accessories for Engines 14.12
- 14-13 Combustion Air 14.15
- 14-14 Exhaust Silencing 14.15
- 14-15 Pollution Control 14.17
- 14-16 Vibration Isolation 14.17
- 14-17 Lubrication Oil Storage and Supply 14.17
- 14-18 Fuel Oil Storage and Supply 14.18
- 14-19 Gaseous Fuel Storage and Supply 14.18
- 14-20 Service Piping 14.19
- 14-21 Building Envelope 14.19
- 14-22 Ventilation 14.20
- 14-23 Maintenance 14.20

**Chapter 15**  
**Variable-Speed Pumping 15.1**

MAYO GOTTLIEBSON, ROBERT L. SANKS, AND ALAN VAUSE

- 15-1 Variable Speed versus Constant Speed 15.1
- 15-2 Design Considerations 15.4
- 15-3 Theory of Variable-Speed Pumping 15.4
- 15-4 Pump Selection 15.9
- 15-5 Variable- and Constant-Speed Pumps in Simultaneous Operation 15.12
- 15-6 Special Design Considerations 15.13
- 15-7 Analysis of Variable-Speed Booster Pumping 15.15
- 15-8 Minimum Flow Rate 15.19
- 15-9 Operations in Booster Pumping 15.22
- 15-10 Simultaneous Operation of V/S and C/S Booster Pumps 15.24
- 15-11 Adjustable- and Variable-Speed Drives 15.25
- 15-12 References 15.41

**Chapter 16**  
**Pump-Driver Specifications 16.1**

DAVID L. EISENHAUER, THOMAS M. FLEGAL,  
 AND GARR M. JONES

- 16-1 Comparison of Two Approaches to Writing Specifications 16.1

- 16-2 Methods for Specifying Quality of Equipment 16.2
- 16-3 Nonrestrictive Specifications 16.2
- 16-4 Operating Conditions 16.4
- 16-5 Mass Elastic Systems and Critical Speeds 16.4
- 16-6 Pump Testing 16.4
- 16-7 Shipping Major Pumping Units 16.8
- 16-8 Submittals 16.8
- 16-9 Product Data 16.9
- 16-10 Seals 16.9
- 16-11 Pump Shafts 16.9
- 16-12 Pump Shaft Bearings 16.9
- 16-13 Vertical Drive Shafts 16.9
- 16-14 Electric Motors 16.9
- 16-15 Optimum Efficiency 16.10
- 16-16 References 16.10

**Chapter 17**  
**System Design for Wastewater Pumping 17.1**

GARR M. JONES

- 17-1 Organization and Control of the Process 17.1
- 17-2 Preliminary Engineering 17.2
- 17-3 Detailed Layout 17.6
- 17-4 Detailed Design 17.10
- 17-5 Examples of Large Lift Stations 17.11
- 17-6 Examples of Medium-Size Lift Stations 17.18
- 17-7 Examples of Small Lift Stations 17.25
- 17-8 References 17.34

**Chapter 18**  
**System Design for Water Pumping 18.1**

BAYARD E. BOSSERMAN II, RICHARD J. RINGWOOD,  
 MARVIN DAN SCHMIDT, AND MICHAEL  
 G. THALHAMER

- 18-1 Types of Water Pumping Stations 18.1
- 18-2 Pumping Station Flow and Pressure Requirements 18.1
- 18-3 Raw Water Pumping from Rivers and Lakes 18.5
- 18-4 Raw Water Pumping from Aqueducts 18.16
- 18-5 Well Pumps with Elevated Tanks 18.24
- 18-6 Booster Pumping Stations 18.33

- 18-7 References 18.46
- 18-8 Suggested Reading 18.46

## Chapter 19

### System Design for Sludge Pumping 19.1

CARL N. ANDERSON AND DAVID J. HANNA

- 19-1 Hydraulic Design 19.2
- 19-2 Types of Pumps 19.9
- 19-3 Pumping System Design 19.13
- 19-4 Piping System Design 19.23
- 19-5 Long-Distance Pumping 19.28
- 19-6 References 19.28

## Chapter 20

### Instrumentation and Control Devices 20.1

ROBERT S. BENFELL AND ALAN VAUSE

- 20-1 Reliability 20.1
- 20-2 Instrument Selection 20.2
- 20-3 Level Measurements 20.5
- 20-4 Pressure Measurements 20.10
- 20-5 Flow Measurements in Pipes 20.13
- 20-6 Open Channel Flow Measurement 20.20
- 20-7 Chlorine Residual Measurement 20.20
- 20-8 Utility and Environmental Measurements 20.20
- 20-9 Pumping Unit Monitors 20.24
- 20-10 Control Equipment 20.24
- 20-11 Control Logic 20.26
- 20-12 Altitude Valves 20.27
- 20-13 Monitoring and Data Acquisition 20.27
- 20-14 Telemetry 20.29
- 20-15 Design Considerations 20.34
- 20-16 References 20.35
- 20-17 Supplementary Reading 20.35

## Chapter 21

### Instrumentation and Control Applications 21.1

ROBERT S. BENFELL

- 21-1 Process and Instrumentation Diagrams 21.1

- 21-2 Well Pump with Hydropneumatic Tank 21.2
- 21-3 Booster Stations 21.3
- 21-4 High-Service Pumping Station 21.4
- 21-5 Small Wastewater Lift Station 21.5
- 21-6 Intermediate-Sized Lift Station 21.7
- 21-7 Large Wastewater Pumping Station 21.8

## Chapter 22

### Vibration and Noise 22.1

JERRY G. LILLY AND WILLIAM D. MARSCHER

- 22-1 Problems of Vibration and Noise 22.1
- 22-2 Avoiding Vibration Problems 22.3
- 22-3 Troubleshooting Excessive Vibration 22.11
- 22-4 Introduction to Vibration and Noise Calculations 22.19
- 22-5 Vibration and Noise Characteristics 22.22
- 22-6 Applicable Codes 22.25
- 22-7 Equipment Vibration 22.29
- 22-8 Vibration Isolation Theory 22.30
- 22-9 Vibration Isolators 22.32
- 22-10 Piping Vibration 22.35
- 22-11 Vibration of Drive Shafts 22.46
- 22-12 Vibration of Structures 22.50
- 22-13 Noise 22.52
- 22-14 Reducing Exterior Noise 22.59
- 22-15 References 22.64

## Chapter 23

### Heating, Ventilating, and Cooling 23.1

EARL L. HECKMAN, PERRY L. SCHAFER, AND PHILIP WOLSTENHOLME

- 23-1 Need for Heating, Ventilating, and Air Conditioning 23.1
- 23-2 HVAC Design Criteria 23.4
- 23-3 Odor Control 23.6
- 23-4 Dry Well Design Guidelines 23.11
- 23-5 Energy Use and Conservation 23.13
- 23-6 Corrosion Protection 23.15
- 23-7 Sequence of Design Steps 23.16
- 23-8 Ventilating System Design 23.18
- 23-9 Design of Heating Systems 23.25
- 23-10 Design of Building Cooling Systems 23.30
- 23-11 Design of Refrigerated Cooling Systems 23.32

- 23-12 References 23.34
- 23-13 Supplementary Reading 23.35

## **Chapter 24**

### **Designing for Easy Operation and Low Maintenance 24.1**

BAYARD E. BOSSERMAN II, GEORGE JORGENSEN, GARY ISAAC, AND ROBERT L. SANKS

- 24-1 Site Selection 24.1
- 24-2 Landscaping 24.2
- 24-3 Hydraulics 24.2
- 24-4 Mechanical Considerations 24.6
- 24-5 Smooth-Running and Reliable Pumps 24.8
- 24-6 Electrical Considerations 24.11
- 24-7 Architectural Considerations 24.13
- 24-8 Standby Facilities 24.13
- 24-9 Specifications 24.14
- 24-10 Operators' Preferences 24.14
- 24-11 Survey of Two Thousand Wastewater Pumping Stations 24.24
- 24-12 Auxiliary Support Systems in Raw Wastewater Pumping Stations 24.32
- 24-13 References 24.33

## **Chapter 25**

### **Summary of Design Considerations 25.1**

GARR M. JONES, ROBERT A. (RANDY) NIXON, RANDALL R. PARKS, AND ROBERT L. SANKS

- 25-1 Need for Pumping Stations 25.2
- 25-2 Site Selection 25.3
- 25-3 Architectural and Environmental Considerations 25.5
- 25-4 Future Expansion 25.10
- 25-5 Hydraulic Constraints 25.11
- 25-6 Types of Pumping Stations 25.12
- 25-7 Power, Drivers, and Standby 25.26
- 25-8 Application-Engineered Equipment 25.30
- 25-9 Station Auxiliaries 25.31
- 25-10 Instruments and Control 25.34
- 25-11 Structural Design 25.35
- 25-12 Concrete Protection: Coatings and Linings 25.44
- 25-13 Corrosion of Metals 25.46
- 25-14 Force Main Design 25.51
- 25-15 References 25.52

## **Chapter 26**

### **Pumping Station Design Examples 26.1**

GARR M. JONES, GARY S. DODSON, AND THEODORE B. WHITON

- 26-1 Redesigned Clyde Wastewater Pumping Station 26.1
- 26-2 Redesigned Kirkland Wastewater Pumping Station 26.8
- 26-3 Jameson Canyon Raw Water Pumping Station 26.15
- 26-4 References 26.17

## **Chapter 27**

### **Avoiding Blunders 27.1**

ROBERT L. SANKS

- 27-1 General 27.1
- 27-2 Site 27.2
- 27-3 Environmental 27.2
- 27-4 Safety 27.2
- 27-5 Hydraulics 27.3
- 27-6 Wet Wells 27.5
- 27-7 Pumps 27.10
- 27-8 Valves 27.13
- 27-9 Mechanical 27.15
- 27-10 Electrical 27.16
- 27-11 Structural-Architectural 27.16
- 27-12 Specifications 27.17
- 27-13 Economics 27.18
- 27-14 The Future and Remodeling 27.18
- 27-15 Find the Blunders 27.18
- 27-16 Design Reviews 27.18
- 27-17 Operations 27.20
- 27-18 References 27.20

## **Chapter 28**

### **Contract Documents 28.1**

JOHN E. CONNELL AND THOMAS M. FLEGAL

- 28-1 General 28.1
- 28-2 Bidding and Contracting Requirements 28.3
- 28-3 Technical Specifications 28.4
- 28-4 Source Material 28.6
- 28-5 Methods of Specifying 28.7
- 28-6 Submittal Requirements 28.8
- 28-7 References 28.9

## Chapter 29 Costs 29.1

STEFAN M. ABELIN, MARK T. PRITCHARD,  
AND ROBERT L. SANKS

29-1	Cost Indexes	29.1
29-2	Cost Curves	29.3
29-3	Maintenance and Energy	29.7
29-4	Interest Formulas	29.9
29-5	Cost Estimates	29.12
29-6	References	29.28

## Appendix A Physical Data A.1

Table A-1	Base SI Units	A.1
Table A-2	Derived SI Units and Physical Quantities	A.2
Table A-3	Physical Constants	A.3
Table A-4	SI Prefixes	A.3
Table A-5	Conversion Factors, U.S. Customary Units to Commonly used SI Units	A.3
Table A-6	Atmospheric Pressure (SI Units)	A.5
Table A-7	Atmospheric Pressure (U.S. Customary Units)	A.5
Table A-8	Physical Properties of Water (SI Units)	A.6
Table A-9	Physical Properties of Water (U.S. Customary Units)	A.6
Table A-10	Physical Properties of Pipe Materials	A.7
Table A-11	Equivalent Weights and Measures	A.7
A-1	References	A.9

## Appendix B Data for Flow in Pipes, Fittings, and Valves B.1

ROBERT L. SANKS

Table B-1	Properties of Mortar-Lined Class 53 Ductile Iron Pipe. SI Units.	B.2
Table B-2	Properties of Mortar-Lined Class 53 Ductile Iron Pipe. U.S. Customary Units.	B.2
Table B-3	Properties of Standard Weight Steel Pipe. SI Units.	B.4
Table B-4	Properties of Standard Weight Steel Pipe. U.S. Customary Units.	B.6

Table B-5	Probable Coefficients of Pipe Friction for Design of Pipes Flowing for Nonaggressive Water and Good Pipeline Maintenance	B.8
Figure B-1	Moody Diagram $f$ in the Darcy–Weisbach Formula	B.9
Figure B-2	Headlosses for Mueller Swing Check Valves with Spring-Loaded Levers	B.10
Figure B-3	Headlosses for Mueller Swing Check Valves with Counterweighted Levers	B.10
Table B-6	Recommended Energy Loss Coefficients, $K$ , for Flanged Pipe Fittings	B.11
Table B-7	Recommended Energy Loss Coefficients, $K$ , for Valves Fully Open	B.12
Figure B-4	Geometric Properties of Partly-Full Pipes	B.13
Figure B-5	Hydraulic Elements of Circular Pipes as Open Channels	B.14
Table B-8	Comparison of Computed Values of Velocity, Depth, Area, and Flow in Open Channels	B.15
Table B-9	Velocities Required to Scour Air Pockets from Pipelines	B.16
Table B-10	Maximum Allowable Flow Rates in Approach Pipes. SI Units.	B.17
Table B-11	Maximum Allowable Flow Rates in Approach Pipes. U.S. Customary Units.	B.18
B-1	References	B.18
B-2	Supplementary Reading	B.19

## Appendix C Typical Specifications for Pumps and Drivers C.1

DAVID L. ELSENHAUER, THOMAS M. FLEGAL,  
AND GARR M. JONES

## Appendix D Common Blunders D.1

EARLE C. SMITH

D-1	Figure 27-4	D.1
D-2	Figure 27-5	D.1
D-3	References	D.2



## **Appendix E Checklist for Project Reviews E.1**

LEROY R. TAYLOR

- E-1 Civil Design Checklist E.1
- E-2 Structural/Geotechnical/Architectural Design Checklist E.2
- E-3 Electrical Design Checklist E.2
- E-4 Instrumentation and Control Checklist E.3
- E-5 Cross-Connection Control E.3
- E-6 Mechanical Design Checklist E.4
- E-7 References E.6

## **Appendix F Start-Up F.1**

ERIK B. FISKE, GEORGE FRYE, LOWELL G. SLOAN,  
AND SAM V. SUIGUSSAAR

- F-1 Pre-Visit Check F.2
- F-2 Pre-Start-Up Check F.2
- F-3 Electrical Systems F.4
- F-4 Simplified Operational Checks for Small Stations F.9
- F-5 Well Pumps F.9

- F-6 Chlorination F.11
- F-7 Complex Drives F.12
- F-8 Control Panel and Electrical Systems F.12
- F-9 Bubbler Systems F.12
- F-10 Vacuum Priming Systems F.13
- F-11 Compressed Air Systems F.14
- F-12 Hydropneumatic Tank System F.15
- F-13 Main Pumps, Final Pre-Start-Up Checks F.16
- F-14 Wet Well and Testing of Main Pumps F.17
- F-15 Cleaning Wet Wells F.17
- F-16 References F.18

## **Appendix G Suction Specific Speed G.1**

GARR M. JONES

- G-1 References 6.2

## **Index I.1**