

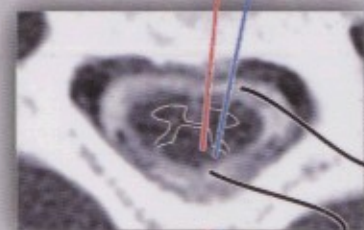
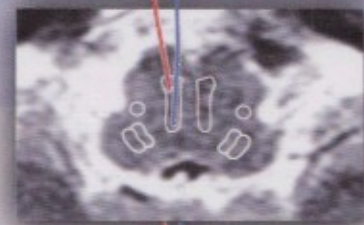
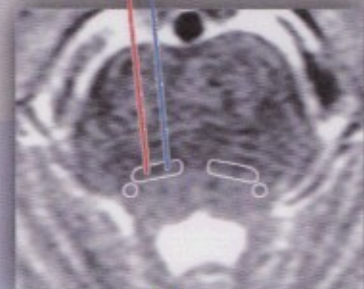
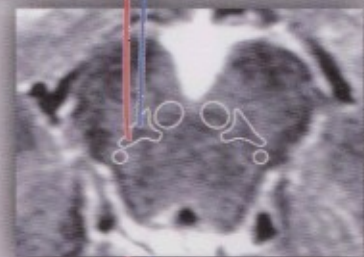
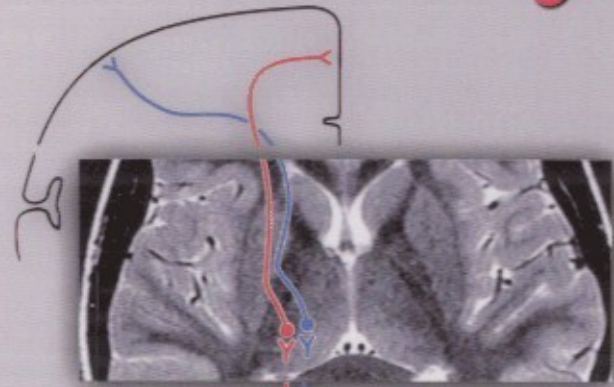
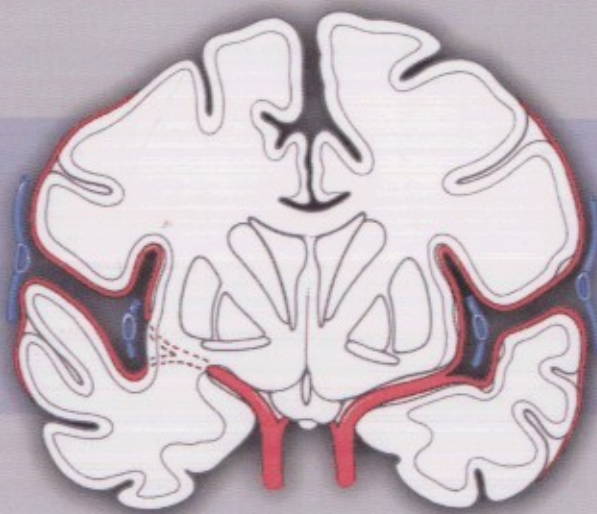
Duane E. Haines

Includes
Interactive Atlas
and Q&A

Neuroanatomy

*An Atlas
of Structures,
Sections,
and Systems*

7th Edition



thePoint



Wolters Kluwer
Health

Lippincott
Williams & Wilkins

Table of Contents

Preface to the Seventh Edition	v
Acknowledgments	vii
Introduction and Readers Guide	1
Including Rationale for Labels and Abbreviations	
External Morphology of the Central Nervous System	9
The Spinal Cord: Gross Views and Vasculature	10
The Brain: Lobes, Principle Brodmann Areas, Sensory-Motor Somatotopy	13
The Brain: Gross Views, Vasculature, and MRI	16
The Cerebellum: Gross Views and MRI	36
The Insula: Gross View, Vasculature, and MRI	38
Cranial Nerves	41
Cranial Nerves in MRI	42
Deficits of Eye Movements in the Horizontal Plane	49
Cranial Nerve Deficits in Representative Brainstem Lesions	50
Meninges, Cisterns, Ventricles, and Related Hemorrhages	51
The Meninges and Meningeal and Brain Hemorrhages	52
Cisterns and Subarachnoid Hemorrhage	56
Ventricles and Hemorrhage into the Ventricles	58
The Choroid Plexus: Locations, Blood Supply, Tumors	62
Internal Morphology of the Brain in Slices and MRI	65
Brain Slices in the Coronal Plane Correlated with MRI	65
Brain Slices in the Axial Plane Correlated with MRI	75

Internal Morphology of the Spinal Cord and Brain in Stained Sections	85
The Spinal Cord with CT and MRI.....	86
Arterial Patterns within the Spinal Cord with Vascular Syndromes.....	96
The Degenerated Corticospinal Tract.....	98
The Medulla Oblongata with MRI and CT.....	100
Arterial Patterns within the Medulla Oblongata with Vascular Syndromes.....	112
The Cerebellar Nuclei.....	114
The Pons with MRI and CT.....	118
Arterial Patterns within the Pons with Vascular Syndromes.....	126
The Midbrain with MRI and CT.....	128
Arterial Patterns within the Midbrain with Vascular Syndromes.....	138
The Diencephalon and Basal Nuclei with MRI.....	140
Arterial Patterns within the Forebrain with Vascular Syndromes.....	160

Internal Morphology of the Brain in Stained Sections: Axial–Sagittal Correlations with MRI	163
Axial–Sagittal Correlations.....	164

Synopsis of Functional Components, Tracts, Pathways, and Systems: Examples in Anatomical and Clinical Orientation ..	175
Components of Cranial and Spinal Nerves.....	176
Orientation.....	178
Sensory Pathways.....	180
Motor Pathways.....	198
Cranial Nerves.....	214
Cerebellum and Basal Nuclei.....	222
Optic, Auditory, and Vestibular Systems.....	242
Limbic System: Hippocampus and Amygdala.....	256

Anatomical–Clinical Correlations: Cerebral Angiogram, MRA, and MRV	265
Cerebral Angiogram, MRA, and MRV.....	266
Overview of Vertebral and Carotid Arteries.....	277

Q&A's: A Sampling of Study and Review Questions, Many in the USMLE Style, All with Explained Answers	279
---	-----

Sources and Suggested Readings.....	See online Interactive Atlas
-------------------------------------	------------------------------

Index.....	325
------------	-----