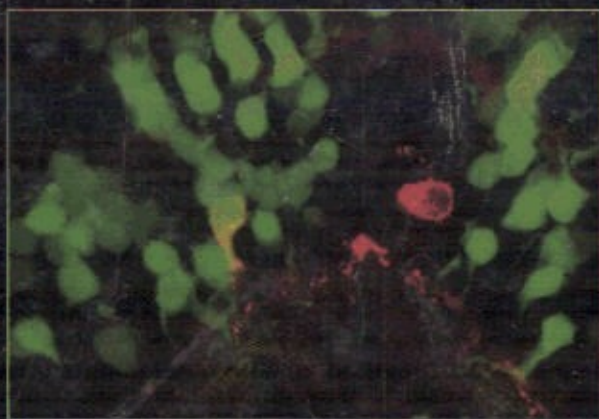


Principles of  
**DEVELOPMENTAL  
GENETICS**



Companion  
Website  
Available  
[http://books.elsevier.com/  
companions/  
9780123695482](http://books.elsevier.com/companions/9780123695482)

Editor **Sally A. Moody**



# CONTENTS

PREFACE XI

Sally A. Moody

## **I THE IMPACT OF GENETIC AND GENOMIC TOOLS ON DEVELOPMENTAL BIOLOGY**

### **1 Untangling the Gordian Knot: Cell Signaling Events That Instruct Development 2**

RENÉE V. HOCH AND PHILIPPE SORIANO

### **2 Finding Gene Expression Changes Using Microarray Technology 32**

TADAYOSHI HAYATA AND KEN W. Y. CHO

### **3 Chemical and Functional Genomic Approaches to Study Stem Cell Biology and Regeneration 45**

WEN XIONG AND SHENG DING

### **4 Assessing Neural Stem Cell Properties Using Large-Scale Genomic Analysis 69**

SOOJUNG SHIN, JONATHAN D. CHESNUT, AND MAHENDRA S. RAO

### **5 Epigenetic Influences on Gene Expression Pathways 92**

SUNDEEP KALANTRY AND TERRY MAGNUSON

### **6 New Insights into Vertebrate Origins 114**

BILLIE J. SWALLA

### **7 Understanding Human Birth Defects Through Model Organism Studies 129**

FEYZA ENGIN AND BRENDAN LEE

## **II EARLY EMBRYOLOGY, FATE DETERMINATION, AND PATTERNING**

### **8 Germ Line Determinants and Oogenesis 150**

KELLY M. HASTON AND RENEE A. REIJO PERA

### **9 Patterning the Anterior–Posterior Axis During *Drosophila* Embryogenesis 173**

KRISTY L. KENYON

### **10 Anterior–Posterior Patterning in Mammals 201**

SIGOLÈNE M. MEILHAC

### **11 Signaling Cascades, Gradients, and Gene Networks in Dorsal/Ventral Patterning 216**

GIRISH S. RATNAPARKHI AND ALBERT J. COUREY

### **12 Early Development of Epidermis and Neural Tissue 241**

KEIJI ITOH AND SERGEI Y. SOKOL

### **13 Formation of the Embryonic Mesoderm 258**

LISA L. CHANG AND DANIEL S. KESSLER

### **14 Endoderm 295**

DÉBORA SINNER, JAMES M. WELLS, AND AARON M. ZORN

### **15 Notch Signaling: A Versatile Tool for the Fine Patterning of Cell Fate in Development 316**

AJAY B. CHITNIS

### **16 Multiple Roles of T-box Genes 341**

L. A. NAICHE AND VIRGINIA E. PAPAIOANNOU

## **III MORPHOGENETIC AND CELL MOVEMENTS**

### **17 Gastrulation in Vertebrates 360**

LILIANNA SOLNICA-KREZEL AND DIANE S. SEPICH

### **18 Regulation of Tissue Separation in the Amphibian Embryo 392**

HERBERT STEINBEISSER

- 19 Role of the Basement Membrane in Cell Migration 404**  
KIYOJI NISHIWAKI AND YUKIHIKO KUBOTA
- 20 Epithelial Morphogenesis 424**  
RONIT WILK AND HOWARD D. LIPSHITZ
- 21 Branching Morphogenesis of Mammalian Epithelia 448**  
JAMIE DAVIES
- 22 The Roles of Ephrin–Eph in Morphogenesis 467**  
IRA O. DAAR

#### **IV ECTODERMAL ORGANS**

- 23 Neural Cell Fate Determination 500**  
STEPHEN N. SANSOM AND FREDERICK J. LIVESEY
- 24 Pathfinding and Patterning of Axonal Connections 525**  
STEPHANIE A. LINN, STEPHANIE R. KADISON, AND CATHERINE E. KRULL
- 25 Retinal Development 548**  
KATHRYN B. MOORE AND MONICA L. VETTER
- 26 Neural Crest Determination 574**  
ROBERTO MAYOR
- 27 Determination of Preplacodal Ectoderm and Sensory Placodes 590**  
SALLY A. MOODY
- 28 Molecular Genetics of Tooth Development 615**  
IRMA THESLEFF
- 29 The Inner Ear 631**  
DONNA F. FEKETE AND ULRIKE J. SIENKNECHT
- 30 Craniofacial Formation and Congenital Defects 656**  
S. A. BRUGMANN AND J. A. HELMS

#### **V MESODERMAL ORGANS**

- 31 Induction of the Cardiac Lineage 680**  
ANDREW S. WARKMAN AND PAUL A. KRIEG

- 32 Heart Patterning and Congenital Defects 698**  
JOHN W. BELMONT
- 33 Blood Vessel Formation 721**  
KARINA YANIV AND BRANT M. WEINSTEIN
- 34 Blood Induction and Embryonic Formation 755**  
XIAOYING BAI AND LEONARD I. ZON
- 35 Topics in Vertebrate Kidney Formation: A Comparative Perspective 778**  
THOMAS M. SCHULTHEISS
- 36 Development of the Genital System 805**  
HONGLING DU AND HUGH S. TAYLOR
- 37 Diaphragmatic Embryogenesis and Human Congenital Diaphragmatic Defects 829**  
KATE G. ACKERMAN AND DAVID R. BEIER
- 38 Formation of Vertebrate Limbs 847**  
YINGZI YANG
- 39 Skeletal Development 866**  
PETER G. ALEXANDER, AMANDA T. BOYCE, AND ROCKY S. TUAN

## **VI ENDODERMAL ORGANS**

- 40 Patterning the Embryonic Endoderm into Presumptive Organ Domains 908**  
BILLIE A. MOORE-SCOTT AND JAMES M. WELLS
- 41 Developmental Genetics of the Pulmonary System 932**  
THOMAS J. MARIANI
- 42 Pancreas Development and Stem Cells 946**  
MAUREEN GANNON

**43 Early Liver Development and Hepatic Progenitor  
Cells 982**

JAY D. KORMISH AND KENNETH S. ZARET

**44 Intestinal Stem Cells in Physiologic Regeneration and  
Disease 1004**

DAVID H. SCOVILLE, XI C. HE, GOO LEE, TOSHIRO SATO, TERRENCE A. BARRETT,  
AND LINHENG LI

**INDEX 1023**