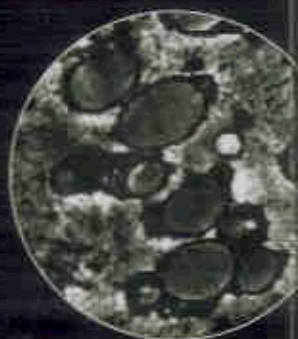
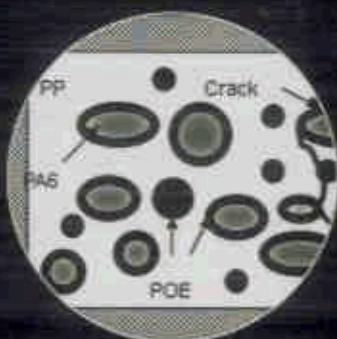
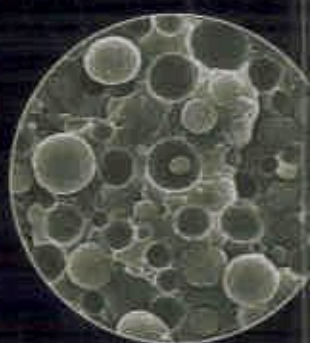


 WILEY



POLYOLEFIN BLENDS



Edited By

DOMASIUS NWABUNMA

THEIN KYU

Contents

Preface	xv
Contributors	xvii

Part I Introduction **1**

1. Overview of Polyolefin Blends **3**

1.1 Introduction	3
1.2 Olefinic Monomers	4
1.3 Polyolefin Homopolymers, Copolymers, and Terpolymers	5
1.4 Polyolefin Blends	7
1.5 Trends in Polyolefin Blends	13
Nomenclature	16
References	18

2. Miscibility and Characteristics of Polyolefin Blends **27**

2.1 Introduction	27
2.1.1 Polyolefins	27
2.1.2 Blends	29
2.2 Polymer Blend Miscibility	30
2.3 Interfaces in Liquid and Polymer Mixtures	33
2.4 Polyolefin–Polyolefin Blends	36
2.4.1 Blends between Polyethylenes	36
2.4.2 Blends between Isotactic Polypropylene and Ethylene Propylene Copolymers	38
2.4.3 Blends between iPP and High Comonomer Concentration Polyethylene Copolymers	39
2.4.4 Blends between iPP and PB1	40
2.5 Binary Immiscible Blends	42
2.5.1 Polyolefin–Polystyrene Blends	43
2.5.2 Polyolefin–Polyamide Blends	43
2.6 Ternary Blends of Polyolefins with Other Polymers and Compatibilizing Agents	44
2.6.1 Surfactants and Compatibilizing Agents	44
2.6.2 Polyolefin–Polystyrene Blends with Compatibilizing Agents	45

2.6.3 Polyolefin–Polyamide Blends with Compatibilizing Agents	48
2.7 Conclusions	50
Nomenclature	50
References	51

Part II Polyolefin/Polyolefin Blends **57**

3. Miscibility, Morphology, and Properties of Polyethylene Blends **59**

3.1 Introduction	59
3.2 Structure and Properties of Polyethylenes	64
3.3 Applications of Polyethylene Blends	65
3.4 Molar Mass and Branching Distributions	66
3.5 Crystallization, Melting, and Branching of Polyethylenes	68
3.6 Miscibility and Crystallization	72
3.7 Theoretical Prediction of Miscibility	74
3.8 Rheology of Melted Polyethylene Blends	76
3.9 Mechanical Properties of Polyethylene Blends	77
3.10 Additives	80
3.11 Conclusions	80
Nomenclature	81
References	82

4. Miscibility and Crystallization Behavior in Binary Polyethylene Blends **84**

4.1 Introduction	84
4.2 Miscibility	86
4.2.1 Linear and Short Branched Polyethylene Blends	86
4.2.2 Blends of Linear and Long Branched Polyethylenes	88
4.2.3 Blends of Short and Long Branched Polyethylenes	89
4.3 Crystallization Behaviors	90
4.3.1 Blends of Linear and Short Branched Polyethylenes	90
4.3.2 Blends of Linear and Long Branched Polyethylenes	92
4.3.3 Blends of Short and Long Branched Polyethylenes	93
4.4 Conclusions	93
Nomenclature	94
References	94

5. Microscopically Viewed Structural Characteristics of Polyethylene Blends Between Deuterated and Hydrogenated Species: Cocrystallization and Phase Separation **97**

5.1 Introduction	97
5.2 Cocrystallization and Phase Separation of PE Blends	98
5.3 Aggregation Structure of Chains in Lamella	101

5.4	Crystallization Behavior of D/H Blend Samples	105
5.4.1	Crystallization in the Cooling Process from the Melt	106
5.4.2	Isothermal Crystallization Process	108
5.4.3	Blending Effect on Crystallization Rate	113
5.5	Mixing Behavior of D and H Components	114
5.6	Conclusions	117
	Acknowledgments	118
	Nomenclature	118
	References	119
6.	Thermal and Structural Characterization of Binary and Ternary Blends Based on Isotactic Polypropylene, Isotactic Poly (1-Butene) and Hydrogenated Oligo (Cyclopentadiene)	121
6.1	Introduction	121
6.2	Binary Blends	123
6.2.1	Blend Preparation	123
6.2.2	Glass Transition Temperature	123
6.2.3	Morphology and Spherulite Growth Rate	124
6.2.4	Isothermal Bulk Crystallization Kinetics	125
6.2.5	Temperature Dependence of the Spherulite Growth Rate and the Overall Kinetic Rate Constant	126
6.2.6	Melting Behavior	131
6.2.7	Polymorphism and Phase Transformation of Poly (1-Butene)/Hydrogenated Oligo (Cyclopentadiene)	133
6.2.8	Supermolecular Structure of Isotactic Polypropylene/Hydrogenated Oligo (Cyclopentadiene) Blends	136
6.3	Ternary Blends	141
6.3.1	Blends Preparation	141
6.3.2	Morphology and Spherulite Growth Rate	141
6.3.3	Glass Transition Temperature	143
6.3.4	Nonisothermal Crystallization and Melting Behavior	143
6.3.5	Isothermal Bulk Crystallization Kinetics of Isotactic Polypropylene Component	145
6.3.6	Melting Behavior of the Isotactic Polypropylene Component	146
6.3.7	Supermolecular Structure	147
6.4	Conclusions	153
	Nomenclature	154
	References	155
7.	Morphological Phase Diagrams of Blends of Polypropylene Isomers with Poly(Ethylene–Octene) Copolymer	157
7.1	Introduction	157
7.2	Blends of sPP/POE	159
7.2.1	Thermal Characterization and Morphological Phase Diagrams: Undulated Lamella, Sheaf, and Spherulite	161
7.2.2	Growth of Single Crystals: Length, Width, and Periodicity	165

7.2.3	Phase Field Modeling for a Single-Component System: Sectorization and Ripple Formation in sPP	172
7.3	Blends of iPP/POE	177
7.3.1	Morphology Development in Relation to Phase Diagrams	177
7.3.2	Sectorization in iPP/POE Blends	181
7.3.3	Crystal Growth Dynamics in Binary Blends of iPP and aPP	182
7.4	Blends of ePP/POE	187
7.4.1	Characterization of Neat Elastomeric Polypropylene	188
7.4.2	Melting Transitions and Morphology Phase Diagrams of ePP/POE Blends	188
7.5	Conclusions	193
	Nomenclature	195
	References	196

8. Structure, Morphology, and Mechanical Properties of Polyolefin-Based Elastomers **198**

8.1	Introduction	198
8.2	Thermoplastic Polyolefin Elastomers	199
8.2.1	Reactor Blends of PP, PE, and EPR: Impact Copolymer PP	199
8.2.2	Postreactor Blends of PP-EPR and ICP-EPR	201
8.3	Thermoplastic Vulcanized Elastomers	206
8.3.1	Dynamic Vulcanization and Morphology	206
8.3.2	Origin of Rubber Elasticity	208
8.3.3	Several Factors that Influence Mechanical Properties	211
8.4	Polyolefin Copolymers, Blends, and Composites	214
8.4.1	Polyolefin Copolymers	214
8.4.2	Blends and Composites	219
8.5	Conclusion	221
	Acknowledgment	222
	Nomenclature	222
	References	222

9. Morphology and Mechanical Properties in Blends of Polypropylene and Polyolefin-Based Copolymers **224**

9.1	Introduction	224
9.2	Morphology and Dynamic Mechanical Properties	225
9.2.1	Blends with Polyethylene or Poly(butene-1)	225
9.2.2	Blends with Ethylene- α -Olefin Copolymers	226
9.2.3	Ethylene-Isotactic Propylene Copolymers	236
9.3	Tensile and Rheo-Optical Properties	241
9.3.1	Principles for Rheo-Optical Characterization	241
9.3.2	Blends with Ethylene- α -Olefin Copolymers	242
9.3.3	Blends with Novel Ethylene-Isotactic Propylene Copolymers	247
9.4	Solidification Process and Final Morphology	250
9.4.1	Morphology Formation During Crystallization	250
9.4.2	Structure and Properties of Injection-Molded Products	257

9.5	Conclusions	264
	Nomenclature	265
	References	265
10.	Functionalization of Olefinic Polymer and Copolymer Blends in the Melt	269
10.1	Introduction	269
10.2	Scope of Review	270
10.2.1	Free-Radical Grafting of Unsaturated Monomers to PO Chains	270
10.2.2	The Use of Monomers and Initiators	275
10.3	Functionalization of PP/PE Blends	284
10.3.1	Effect of Reacting Blend Formulation on Grafting Efficiency and Rheological and High Elastic Properties of Melt of Functionalized PP/PE Blends	284
10.3.2	Structure and Mechanical Properties of Functionalized PP/PE Blends	291
10.4	Functionalization of PP/EPR Blends	295
10.5	Functionalization Features of Blends: PE/EPR, PP(PE)/EOC, and PP(PE)/Styrene Polymer	297
10.6	Use of Functionalized Polyolefin Blends	299
10.7	Conclusion	300
	Nomenclature	301
	References	302
11.	Deformation Behavior of β-Crystalline Phase Polypropylene and Its Rubber-Modified Blends	305
11.1	Introduction	305
11.2	Deformation Characteristics	309
11.2.1	Static Tensile Behavior	310
11.2.2	Strain-Induced $\beta \rightarrow \alpha$ Phase Transition	314
11.2.3	Impact Behavior	323
11.3	Fracture Toughness	330
11.3.1	General Aspects	330
11.3.2	Mode I LEFM Approach	331
11.3.3	Impact Fracture Toughness	339
11.3.4	Essential Work of Fracture	341
11.4	Conclusions	347
	Nomenclature	347
	References	348
12.	Multiphase Polypropylene Copolymer Blends	351
12.1	Introduction	351
12.1.1	Commercial Production	352
12.1.2	Morphology of Commercial Impact PP Copolymers	352

12.2	Dispersive Mixing during Processing	357
12.3	Molecular Structure of Impact PP Copolymers	360
12.4	Coarsening in Multiphase PP Copolymer Systems	360
12.4.1	Background	360
12.4.2	Coarsening of High Impact Polypropylene	365
12.4.3	Coarsening of Model Blends	368
12.4.4	Interfacial Effects in Polypropylene Copolymer Systems	370
12.5	Conclusions	373
	Nomenclature	376
	References	377
13.	Heterogeneous Materials Based on Polypropylene	379
13.1	Introduction	379
13.2	The Interphase: Definition	380
13.3	Magnitude Orders in the Interphase	380
13.3.1	The Dispersed Phase	382
13.3.2	The Matrix	383
13.3.3	The Interphase: Designing the Interface	383
13.4	Interfacial Modification of Heterogeneous Materials Based on Polypropylene	385
13.4.1	Composites: When the Dispersed Phase is Rigid	387
13.4.2	Blends: When the Dispersed Phase is Flexible	387
13.4.3	The Role of the Interfacial Modifiers from the Matrix Side	388
13.5	Interfacial Modifiers Based on Polypropylene	397
13.5.1	The Kinetic Approach: Basic Aspects	397
13.5.2	Chemical Modification of Polypropylenes by Grafting of Polar Monomers	398
13.6	Conclusions	407
	Acknowledgment	408
	Nomenclature	408
	References	408
14.	Polypropylene/Ethylene–Propylene–Diene Terpolymer Blends	411
14.1	Introduction	411
14.2	PP/EPDM Blends	412
14.2.1	Toughness and Crystallization Behaviors of PP/EPDM Blends	412
14.2.2	Compatibilization of PP/EPDM Blends	414
14.2.3	Ternary Blends and Composites from PP/EPDM Blends	416
14.2.4	Application of Radiation	417
14.3	Dynamically Vulcanized PP/EPDM Blends (or Thermoplastic Vulcanizates (TPVs))	419
14.3.1	Effect of Cross-linking on the Properties of PP/EPDM TPVs	420

14.3.2	Microstructure of PP/EPDM TPV	423
14.3.3	PP/EPDM/Ionomer TPVs	425
14.3.4	Mechanical and Rheological Properties	428
14.4	Applications of PP/EPDM Blends	436
14.5	Conclusions	437
	Acknowledgments	438
	Nomenclature	438
	References	439

15. Ethylene–Propylene–Diene Rubber/Natural Rubber Blends 441

15.1	Introduction	441
15.2	Miscibility, Compatibility, and Thermodynamics of Polymer Blending	442
15.3	Blend Preparation	443
15.4	Covulcanization	444
15.5	Filler Distribution in NR/EPDM Blends	447
15.6	Morphology of NR/EPDM Blends	448
15.7	Compatibilization of NR/EPDM Blends	450
15.8	Mechanical and Viscoelastic Properties	452
	15.8.1 Mechanical Properties	452
	15.8.2 Dynamic Mechanical Properties	456
15.9	Rheological Properties	458
15.10	Thermal Properties	460
15.11	Electrical Properties ¹	461
15.12	Aging Properties	462
	15.12.1 Thermal Aging	462
	15.12.2 Ozone Resistance	463
15.13	Transport Properties	465
15.14	Applications	466
15.15	Conclusions	469
	Nomenclature	469
	References	470

16. Phase Field Approach to Thermodynamics and Dynamics of Phase Separation and Crystallization of Polypropylene Isomers and Ethylene–Propylene–Diene Terpolymer Blends 473

16.1	Introduction	473
16.2	Experimental Phase Diagrams	475
	16.2.1 Cloud Point Phase Diagram of iPP/EPDM Blends	475
	16.2.2 Cloud Point Phase Diagram of sPP/EPDM Blends	476
16.3	Thermodynamic Free Energy Description of Crystalline Polymer Blends	478
	16.3.1 Flory–Huggins Free Energy of Amorphous–Amorphous Blends	478

16.3.2	Extension of the FH Theory to Crystal–Amorphous Blends	479
16.3.3	Prediction of Phase Diagram Topologies	481
16.3.4	Comparison with Experimental Phase Diagrams of PP/EPDM Blends	484
16.4	Phase Field Modeling on Polymer Phase Transitions	486
16.4.1	Theory on Phase Separation Dynamics and Morphology Evolution	486
16.4.2	Dynamics of Crystal Growth in a Phase Separating System: iPP/EPDM Blends	488
16.4.3	Dynamics of Crystal Growth in a Phase Separating System: sPP/EPDM Blends	491
16.5	Conclusions	496
	Nomenclature	496
	References	497

Part III Polyolefin/Nonpolyolefin Blends 499

17. Compatibilization and Crystallization of Blends of Polyolefins with a Semiflexible Liquid Crystalline Polymer 501

17.1	Blends of Polyolefins (High Density Polyethylene and Isotactic Polypropylene) with a Semiflexible Liquid Crystalline Polymer	501
17.1.1	Introduction	501
17.1.2	Blends of High Density Polyethylene (HDPE) with LCP	502
17.1.3	Blends of Isotactic Polypropylene with LCP	509
17.2	Crystallization Behavior of Blends of Polyolefins with a Semiflexible Liquid Crystalline Polymer	513
17.2.1	Isothermal and Nonisothermal Crystallization of Blends of Linear Low Density Polyethylene with a Semiflexible Liquid Crystalline Polymer	513
17.2.2	Crystallization Behavior of PE-g-LCP Copolymers	517
17.2.3	Effect of PP-g-LCP Compatibilizer on the Morphology and Crystallization of PP/LCP Blends	519
17.2.4	Isothermal Crystallization Kinetics of Compatibilized Blends of Polyolefins with a Semiflexible LCP	519
17.2.5	Crystallization and Morphology of Fibers Prepared from Compatibilized Blends of Polyethylene with a Liquid Crystalline Polymer	522
17.3	Conclusions	523
	Acknowledgment	523
	Nomenclature	523
	References	524

18. Functionalized Polyolefins and Aliphatic Polyamide Blends: Interphase Interactions, Rheology, and High Elastic Properties of Melts	527
<hr/>	
18.1 Introduction	527
18.2 Compounding and Interphase Phenomena in PA/PO Blends	528
18.3 Rheological and High Elastic Properties of PA/PO Melts	534
18.4 Morphology and Impact Strength of PA/g-PO Blends that Give Melts of High Viscosity and Strength	543
18.5 New Applications of PA/g-PO Blends	550
18.6 Conclusions	550
Nomenclature	551
References	551
19. Plastic Deformation and Damage Mechanisms of Ternary PP/PA6/POE Polymer Blends	556
<hr/>	
19.1 Introduction	556
19.2 Materials Presentation and Experimental Methods	558
19.2.1 Materials Presentation	558
19.2.2 Morphological Study under SEM and TEM	559
19.2.3 Video-controlled Tensile System	559
19.3 Microstructure	561
19.4 General Mechanical Properties	566
19.4.1 Dynamic Mechanical Thermal Analysis	566
19.4.2 Toughness by Impact Loading and Yield Stress by Tension	567
19.5 Plastic Deformation under Uniaxial Tension	569
19.5.1 Definition of Volume Strain	569
19.5.2 True Axial Stress–Strain Relation	571
19.5.3 Volume Strain	573
19.5.4 Under Cyclic Tension	575
19.6 Mechanisms of Plastic Deformation and Damage	579
19.6.1 Damage Mechanisms in Polymer Blends	579
19.6.2 Influence of Damage Type	580
19.6.3 Damage-induced Shear Banding	581
19.6.4 Microscopic Observation under SEM	582
19.6.5 Microscopic Observation under TEM	589
19.6.6 Discussion	589
19.7 Conclusions	596
Nomenclature	597
References	597
20. Reactive Compatibilization of Binary and Ternary Blends Based on PE, PP, and PS	600
<hr/>	
20.1 Introduction	600
20.2 Friedel–Crafts Alkylation Reaction	601

xiv Contents

20.3	Binary Blends	603
20.3.1	PE/PS Blends	603
20.3.2	PP/PS Blends	611
20.4	Ternary Blends: PE/PP/PS	615
20.5	Conclusions	620
	Nomenclature	620
	References	621

21. Polyolefin/Epoxy Resin Blends **623**

21.1	Introduction	623
21.2	Blend Preparation	624
21.3	Miscibility Studies and Phase Diagrams	625
21.4	Cure Kinetics	629
21.5	Crystallization Behavior	631
21.6	Morphology	637
21.7	Dynamic Mechanical Properties	644
21.8	Mechanical Properties	647
21.9	Conductivity Studies	649
21.10	Conclusion	656
	Nomenclature	658
	References	659

Index **663**
