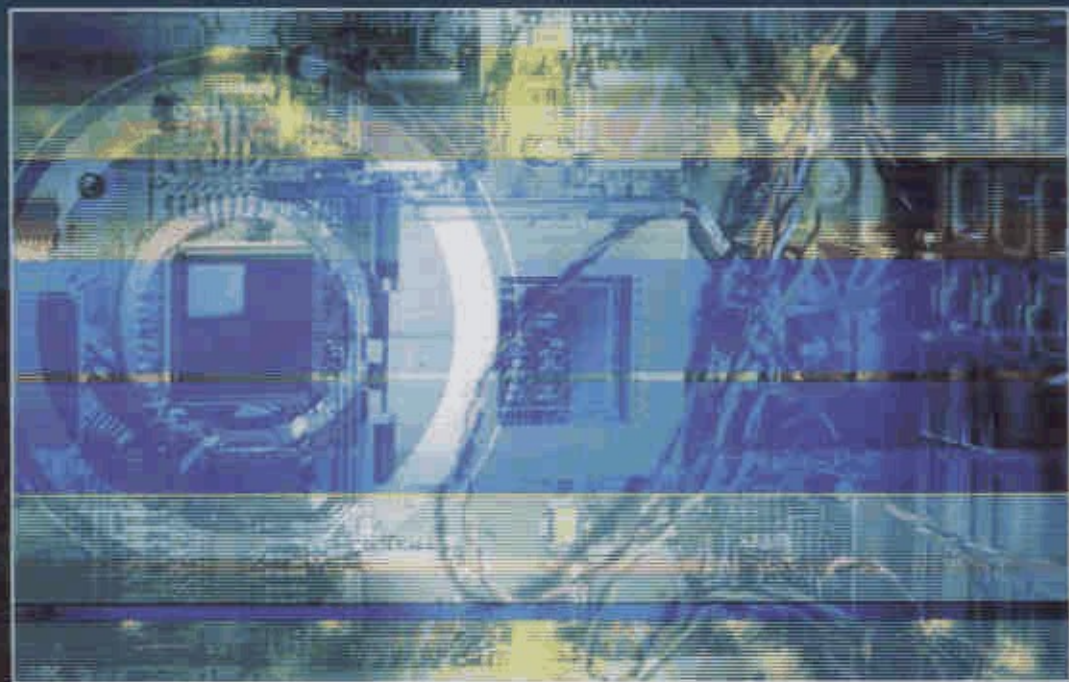


NETWORK ANALYSIS AND CIRCUITS

M. Arshad



E N G I N E E R I N G S E R I E S



CONTENTS

Chapter 1. Introduction	1
1.1 What is a Network?	1
1.2 Systems	4
1.3 Electrical Energy Sources	6
1.4 Dependent Source or Controlled Source	6
1.5 Kirchhoff's Voltage Law (KVL)	8
1.6 Kirchhoff's Current Law (KCL)	9
1.7 Mesh Analysis	10
1.8 Nodal Analysis	13
1.9 Passive Elements	14
1.10 Current Division Formula	19
1.11 Voltage Division Formula for Two Resistors	21
1.12 Power and RMS Values	23
Chapter 2. Kirchhoff's Laws and Their Applications	39
2.1 Introduction	39
2.2 Branch Current Method	42
Chapter 3. Graph Theory	73
3.1 Introduction	73
3.2 Rules for Drawing a Graph	73
3.3 Some Useful Definitions	74
3.4 Complete Incidence Matrix (A_C)	79
3.5 Drawing a Graph from an Incidence Matrix	81
3.6 Drawing a Graph from a Reduced Incidence Matrix	82
3.7 Kirchhoff's Current Law (KCL)	82
3.8 Fundamental Loops (Tie-Sets) of a Graph	83
3.9 Cut-Set	86
3.10 Fundamental Cut-Sets or F -Cut-Sets	91

3.11 Nodal Analysis Based on Graph Theory	94
3.12 Loop Analysis Based on Graph Theory	95
Chapter 4. The Laplace Transform	337
4.1 Introduction	137
4.2 Laplace Transform of Some Commonly Used Functions	137
4.3 Basic Laplace Transform Theorem	141
4.4 Laplace Transform of Some Other Functions	143
4.5 Initial Value Theorem	145
4.6 Final Value Theorem	145
4.7 Inverse Laplace Transformation	145
Chapter 5. Basic Signals and Waveform Synthesis	173
5.1 Introduction	173
5.2 Step Function	173
5.3 Ramp Function	179
5.4 Parabolic Function	182
5.5 Impulse Function or Dirac Delta Function	183
5.6 Exponential Function	185
5.7 Sinusoidal Signal	186
5.8 Relation Between Parabolic, Ramp, Unit Step, and Impulse Functions	187
5.9 Synthesis of General Waveforms	187
Chapter 6. Circuit Analysis by the Classical Method	217
6.1 Introduction	217
6.2 Linear Differential Equations	219
6.3 Determination of the Complementary Function (C.F.)	221
6.4 Determination of the Particular Integral (P.I.)	223
6.5 Initial Conditions in Circuits	225
6.6 Transient Response of Series RL Circuit Having D.C. Excitation	227
6.7 Transient Response of Series RC Circuit Having D.C. Excitation	230
6.8 Transient Response of Series RLC Circuit Having D.C. Excitation	233
Chapter 7. Applications of the Laplace Transform	255
7.1 Introduction	255
7.2 Solution of Linear Differential Equations	255
7.3 Transformed Circuit Components Representation	257

Chapter 8. Network Theorems	297
8.1 Introduction to Network Theorems	297
8.2 Millman's Theorem	297
8.3 Superposition Theorem	304
8.4 Thevenin's Theorem	313
8.5 Norton's Theorem	318
8.6 Millman's Theorem Revisited	330
8.7 Maximum Power Transfer Theorem	332
8.8 Δ -Y and Y- Δ Conversions	337
8.9 Compensation Theorem	343
8.10 Tellegen's Theorem	349
8.11 Reciprocity Theorem	355
Chapter 9. Network Functions; Poles and Zeros	399
9.1 Introduction	399
9.2 Network Functions for a One-Port Network	400
9.3 Network Functions for a Two-Port Network	401
9.4 Network Functions as a Quotient of Polynomials in S	409
9.5 Poles and Zeros of Network Functions	410
9.6 Significance of Poles and Zeros in Network Functions	413
9.7 Restrictions on Locations of Poles and Zeros in Driving-Point Functions	414
9.8 Restrictions on Locations of Poles and Zeros for Transfer Functions	423
9.9 Time-Domain Response from Pole and Zero Plots	430
9.10 Routh Criterion	438
Chapter 10. Two-Port Networks	459
10.1 Introduction	459
10.2 Open Circuit Impedance or [Z] Parameters	460
10.3 Short Circuit Admittance or [Y] Parameters	463
10.4 ABCD or Transmission Parameters	466
10.5 Hybrid or h-Parameters	470
10.6 Inverse Hybrid (or G) Parameters	472
10.7 Inter-Relationship of Parameters	476
10.8 Condition for Reciprocity	489
10.9 Condition for Symmetry	492
10.10 Interconnections of Two-Port Networks	496
10.11 Lattice Networks	508
10.12 Image Parameters	512

Chapter 11. Network Synthesis	567
11.1 Introduction	567
11.2 Analysis and Design	567
11.3 Elements of the Realizability Theory	568
11.4 Hurwitz Polynomial	568
11.5 Procedure for Obtaining the Continued Fraction Expansion	570
11.6 Positive Real Functions	577
11.7 Synthesis of One-Port Networks with Two Elements (R, L, C)	581
11.8 LC Immittance Function or LC Network Synthesis	595
11.9 RC Impedance or RL Admittance Function	597
11.10 RL Impedance or RC Admittance Function	599
Chapter 12. Resonance and Selectivity	635
12.1 Introduction	635
12.2 Series Resonance	635
12.3 Phasor Diagram of Series RLC Circuit	640
12.4 Reactance and Impedance Curves of a Series RLC Circuit	643
12.5 Vibration of Current and Voltages with Frequency in a Series RLC Circuit	644
12.6 Selectivity and Bandwidth	647
12.7 Quality Factor or Q-Factor	649
12.8 Series Resonance and Selectivity of Series RLC Circuit with Frequency Variable ω	652
12.9 Selectivity of Series RLC Circuit with a Capacitance Variable	657
12.10 Selectivity of Series RLC Circuit with an L Variable	659
12.11 Parallel Resonance	661
12.12 Impedance of Parallel-Tuned Circuit	663
12.13 Selectivity and Bandwidth of a Parallel-Tuned Circuit	667
Chapter 13. Filters	671
13.1 Introduction	671
13.2 Parameters of a Filter	671
13.3 Decibel and Neper	672
13.4 Propagation Constant	673
13.5 Classification of Filters	675
13.6 Basic Filter Networks	677
13.7 Cut-Off Frequencies	682

13.8 Constant-K Filters	684
13.9 m-Derived Filters	703
13.10 m-Derived Band-Pass Filter	714
Chapter 14. Fourier Analysis	727
14.1 Introduction	727
14.2 Periodic Functions	727
14.3 Even and Odd Functions	728
14.4 Fourier Series	731
14.5 Alternative Forms of Fourier Series	732
14.6 Useful Integrals in Fourier Series	733
14.7 Evaluation of Fourier Series Constants	734
14.8 Fourier Series Constants for Period $(0 + 0.2\pi)$	737
14.9 Limits of Integration per Time Period	737
14.10 Fourier Constants in Terms of Even and Odd Functions	738
14.11 Waveform Symmetries	738
14.12 Use of Fourier Series	746
Appendix A. Selected Answers to Exercises	775
Appendix B. About the CD-ROM	777
Index	779