

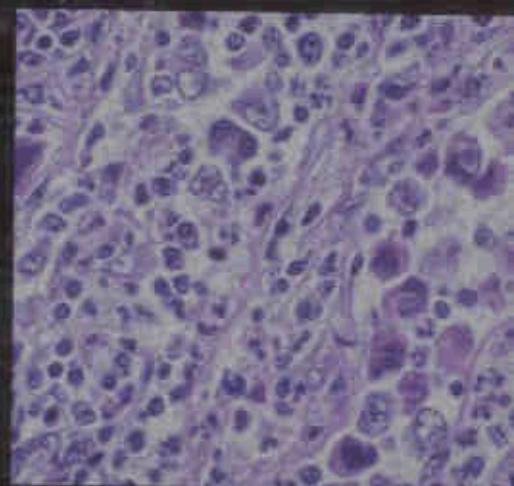
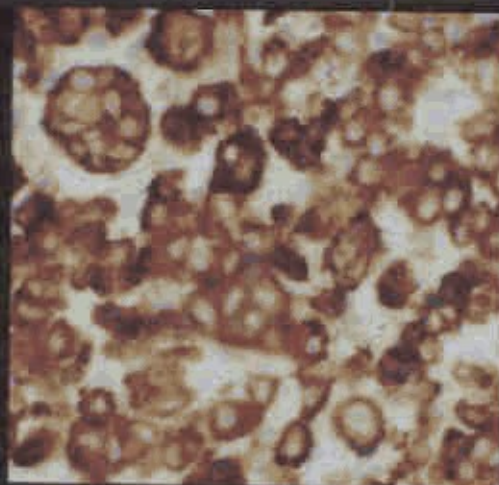
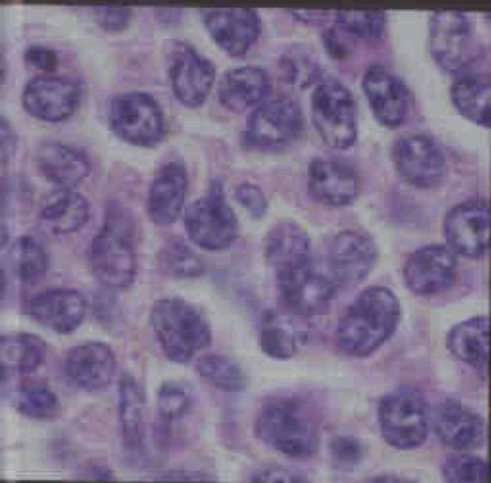
CAMBRIDGE

Medicine

Illustrated Surgical Pathology

SERIES EDITOR: LAWRENCE WEISS

LYMPH NODES



Lawrence Weiss



CONTENTS

<i>Preface</i>	ix
1 Specimens and Studies	1
2 Normal Lymph Node	5
Structure and Cells	5
Trafficking and the Immune Response	10
3 Benign Lymphadenopathies	13
Reactive Follicular Hyperplasia	15
Autoimmune Disease	18
Kimura Disease	19
Syphilis	22
Toxoplasmosis	22
Castleman Disease	25
HIV-Related Benign Lymphadenopathy	32
Progressive Transformation of Germinal Centers	36
Reactive Paracortical Hyperplasia	38
Acute Infectious Mononucleosis	39
CMV Lymphadenitis	42
Herpes Simplex Lymphadenitis	43
Postvaccinial Reactive Paracortical Hyperplasia	44
Drug-Induced Reactive Paracortical Hyperplasia	44
Dermatopathic Lymphadenitis	45
Sinus Hyperplasia	48
Nonspecific Sinus Histiocytosis	48
Monocytoid B-Cell Hyperplasia	48
Whipple Lymphadenopathy	51
Lymphadenopathy Due to Deposition of Exogenous Material	51
Lymphadenopathy Due to Deposition of Endogenous Lipid Material	53
Rosai-Dorfman Disease	53
Hemophagocytic Lymphohistiocytosis	58
Benign Lymphadenopathy with Extensive Necrosis	59
Complete Necrosis	59
Kikuchi Histiocytic Necrotizing Lymphadenitis	61
Systemic Lupus Erythematosus	64
Kawasaki Disease	65

Reactive Lymphadenopathies with a Primary Granulomatous Pattern: Noninfectious	66
Granulomatous Inflammation in Malignant Neoplasms	67
Sarcoidosis	67
Reactive Lymphadenopathies with a Primary Granulomatous Pattern: Infectious	67
Tuberculosis	69
Atypical Mycobacterial Infection	69
Lepromatous Lymphadenitis	69
Fungal Lymphadenitis	70
Cat Scratch Lymphadenitis	71
Lymphogranuloma Venereum	73
Yersinia Lymphadenitis	73
Lymphadenopathy Due to Alteration of the Connective Tissue Framework	73
Inflammatory Pseudotumor of Lymph Nodes	75
Vascular Transformation of Lymph Node Sinuses	76
Bacillary Angiomatosis	78
Deposition of Interstitial Substance	79
Proteinaceous Lymphadenopathy	79
Immunoglobulin Deposition Lymphadenopathy	80
Pneumocystis Lymphadenitis	81
4 Epithelial and Nevomelanocytic Lesions of Lymph Nodes	82
Epithelial Lesions	82
Benign Epithelial Inclusions	82
Carcinoma	84
Nevomelanocytic Lesions	87
5 Stromal Tumors and Tumorlike Lesions of Lymph Nodes	89
Lipomatosis	89
Palisaded Myofibroblastoma	90
Smooth Muscle Neoplasms	90
Vascular Tumors and Tumorlike Lesions	93
Angiomyomatous Hamartoma	93
Epithelioid Hemangioma	95
Vascular Lesion Arising in Castleman Disease	96
Hemangioendothelioma	97
Kaposi Sarcoma	98
High-Grade Angiosarcoma	100
6 Hodgkin Lymphoma	101
Classical Hodgkin Lymphoma	101
Nodular Lymphocyte–Predominant Hodgkin Lymphoma	115
7 Non-Hodgkin Lymphoma	122
Chronic Lymphocytic Leukemia/Small Lymphocytic Lymphoma	125

Lymphoplasmacytic Lymphoma	130
Plasmacytoma	133
Hairy Cell Leukemia	135
Nodal Marginal Zone B-Cell Lymphoma	138
Extranodal Marginal Zone B-Cell Lymphoma of Mucosa-Associated Lymphoid Tissue (MALT) Involving Lymph Nodes	142
Splenic Marginal Zone Lymphoma Involving Lymph Nodes and Primary Nodal Marginal Zone Lymphoma of Splenic Type	143
Follicular Lymphoma	145
Mantle Cell Lymphoma	156
Diffuse Large B-Cell Lymphoma	161
Burkitt Lymphoma	175
Precursor B-Lymphoblastic Lymphoma/Leukemia	181
Precursor T-Lymphoblastic Lymphoma/Leukemia	183
Mature T-Cell and NK-Cell Neoplasms	187
Angioimmunoblastic T-Cell Lymphoma	187
Peripheral T-Cell Lymphoma, Unspecified	190
Anaplastic Large-Cell Lymphoma, ALK-Negative Type	197
Anaplastic Large-Cell Lymphoma, ALK-Positive Type	200
Mycosis Fungoides/Sezary Syndrome	205
Adult T-Cell Leukemia/Lymphoma	208
T-Cell Prolymphocytic Leukemia	209
Other Mature T- and NK-Cell Neoplasms	210
T-Cell Large Granular Lymphocytic Leukemia	211
Aggressive NK-Cell Leukemia	211
Extranodal NK/T-Cell Lymphoma, Nasal Type	212
Enteropathy-Associated T-Cell Lymphoma	213
Hepatosplenic T-Cell Lymphoma	213
Subcutaneous Panniculitis-Like T-Cell Lymphoma	215
8 Composite Lymphomas and Interface Between Classical Hodgkin and Non-Hodgkin Lymphoma	216
Composite Classical Hodgkin and B-Cell Non-Hodgkin Lymphoma	216
Sequential Hodgkin Lymphoma and B-Cell Lymphoma	217
B-Cell Lymphoma with Features Intermediate Between Diffuse Large B-Cell Lymphoma and Classical Hodgkin Lymphoma (Gray-Zone Lymphoma)	217
Hodgkin Lymphoma and T-Cell Lymphoma	219
9 Immunodeficiency-Associated Lymphoproliferative Disorders	220
Primary Immunodeficiency Syndromes	220
HIV-Associated Malignant Lymphomas	224
Posttransplantation Lymphoproliferative Disorders	228
Immunosuppression Associated with Treatment of Other Diseases	231

Methotrexate-Associated Lymphoproliferative Disorders	231
Fludarabine-Associated Lymphoproliferative Disorders	231
Immunosuppression Associated with Aging	231
10 Histiocytic and Dendritic Cell Neoplasms	234
Histiocytic Sarcoma	234
Langerhans Cell Histiocytosis	237
Langerhans Cell Sarcoma	241
Interdigitating Dendritic Cell Sarcoma	241
Follicular Dendritic Cell Sarcoma	244
Fibroblastic Reticulum Cell Neoplasm	247
Precursor Plasmacytoid Dendritic Cell Neoplasm	248
11 Myeloid and Mast Cell Neoplasms	250
Extramedullary Hematopoiesis	250
Myeloid Sarcoma	251
Mast Cell Neoplasia	253
<i>Reference List</i>	257
<i>Index</i>	285