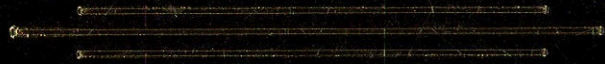


MEDICAL TOXICOLOGY
OF
NATURAL SUBSTANCES

Foods, Fungi, Medicinal Herbs, Plants,
and Venomous Animals



DONALD G. BARCELOUX

 WILEY

CONTENTS

FOREWORD	xv
PREFACE	xvii
ACKNOWLEDGMENTS	xix
REVIEW PANEL	xxi
PART 1 FOODBORNE and MICROBIAL TOXINS	1
I Chemical Contamination and Additives	5
<i>by Cyrus Rangan, MD, FAAP</i>	
1 Food Contamination	5
2 Food Additives and Sensitivities	22
II Staples and Spices	34
3 Akee Fruit and Jamaican Vomiting Sickness (<i>Blighia sapida</i> Koenig)	34
4 Cinnamon (<i>Cinnamomum</i> Species)	39
5 Cyanogenic Foods (Cassava, Fruit Kernels, and Cycad Seeds)	44
6 Cycad Seeds and Chronic Neurologic Disease (<i>Cycas</i> Species)	54
7 Djenkol Bean [<i>Archidendron jiringa</i> (Jack) I. C. Nielsen]	59
8 Grass Pea and Neurolathyrism (<i>Lathyrus sativus</i> L.)	62
9 Nutmeg (<i>Myristica fragrans</i> Houtt.)	67
10 Pepper and Capsaicin (<i>Capsicum</i> and <i>Piper</i> Species)	71
11 Potatoes, Tomatoes, and Solanine Toxicity (<i>Solanum tuberosum</i> L., <i>Solanum lycopersicum</i> L.)	77
12 Rhubarb and Oxalosis (<i>Rheum</i> Species)	84

III	Microbes	89
A	Bacteria	89
	<i>by Cyrus Rangan, MD, FAAP</i>	
13	<i>Bacillus cereus</i>	89
14	<i>Campylobacter jejuni</i>	96
15	<i>Clostridium botulinum</i> (Botulism)	103
16	<i>Clostridium perfringens</i>	114
17	<i>Escherichia coli</i>	120
18	<i>Listeria monocytogenes</i>	133
19	<i>Salmonella</i>	141
20	<i>Shigella</i> Species (Shiga Enterotoxins)	150
21	<i>Staphylococcus aureus</i>	156
22	<i>Streptococcus</i> Species	162
23	<i>Vibrio</i> Species	167
24	<i>Yersinia enterocolitica</i>	174
B	Other Microbes	181
25	Cyanobacteria	181
26	Protozoa and Intestinal Parasites	191
27	Gastrointestinal Viruses	202
IV	Seafood	212
28	Amnesic Shellfish Poisoning and Domoic Acid	212
29	Azaspiracid Shellfish Poisoning and Azaspiracid Toxins	218
30	Diarrhetic Shellfish Poisoning and Okadaic Acid	222
31	Neurotoxic Shellfish Poisoning and Brevetoxins	227
32	Paralytic Shellfish Poisoning and Saxitoxins	231
33	Ciguatera Fish Poisoning and Ciguatoxins	238
34	Puffer Fish Poisoning and Tetrodotoxin	247
35	Red Whelk and Tetramine	253
36	Scombroid Fish, Scombrotxin, and Histamine	256
PART 2	FUNGAL TOXINS	261
I	Mushrooms	265
37	Amatoxin-Containing Mushrooms	265
38	False Morel and Gyromitrin Poisoning	285

39	Gastroenteritis-Producing Mushrooms	290
40	Inky Cap and Coprine Toxicity [<i>Coprinus atramentarius</i> (Bull.) Fr.]	294
41	Isoxazole-Containing Mushrooms and Pantherina Syndrome (<i>Amanita muscaria</i> , <i>Amanita pantherina</i>)	298
42	Muscarine-Containing Mushrooms and Muscarine Toxicity (<i>Clitocybe</i> and <i>Inocybe</i> Species)	303
43	Orellanine-Containing Mushrooms and Nephrotoxicity (<i>Cortinarius</i> Species)	307
44	Paxillus and Other Mushroom Syndromes	312
II	Mycotoxins	317
45	Mycotoxins	317

PART 3 MEDICINAL HERBS and ESSENTIAL OILS 373

I	Medicinal Herbs	377
46	Aloe Vera [<i>Aloe vera</i> (L.) Burm. f.]	377
47	Aristolochic Acid and Chinese Herb Nephropathy	382
48	Black Cohosh (<i>Actaea racemosa</i> L.)	388
49	Blue Cohosh [<i>Caulophyllum thalictroides</i> (L.) Michx.]	394
50	Borage (<i>Borago officinalis</i> L.)	397
51	Burdock Root (<i>Arctium lappa</i> L.)	400
52	Calamus (<i>Acorus calamus</i> L.)	403
53	Camphor (<i>Cinnamomum camphora</i> T. Nees & Eberm.)	407
54	Cascara (<i>Frangula purshiana</i> Cooper)	414
55	Cat's Claw [<i>Uncaria tomentosa</i> (Willd. ex Schult.) DC.]	421
56	Chamomile [<i>Chamomilla recutita</i> (L.) Rauschert, <i>Chamaemelum nobile</i> L.]	425
57	Chaparral [<i>Larrea tridentata</i> (Sesse & Moc. ex DC.) Vail]	429
58	Chaste Tree (<i>Vitex agnus-castus</i> L.)	434
59	Clove and Eugenol [<i>Syzygium aromaticum</i> (L.) Merr. & L. M. Perry]	437
60	Colocynth [<i>Citrullus colocynthis</i> (L.) Schrad.]	443
61	Coltsfoot (<i>Tussilago farfara</i> L.)	446
62	Comfrey and Other Pyrrolizidine-Containing Plants	449
63	Cranberry (<i>Vaccinium macrocarpon</i> Aiton)	458
64	Dong Quai [<i>Angelica sinensis</i> (Oliv.) Diels]	461
65	Feverfew (<i>Tanacetum parthenium</i> Schultz Bip.)	465

66	Garlic (<i>Allium sativum</i> L.)	470
67	Germander (<i>Teucrium chamaedrys</i> L.)	477
68	Ginger (<i>Zingiber officinale</i> Roscoe)	482
69	Ginkgo Tree (<i>Ginkgo biloba</i> L.)	488
70	Ginseng	497
71	Goldenseal (<i>Hydrastis canadensis</i> L.)	504
72	Hawthorn (<i>Crataegus</i> Species)	510
73	Impila, Pine Thistle, and Atractyloside	514
74	Jin Bu Huan and Tetrahydropalmatine	518
75	Juniper (<i>Juniper communis</i> L.)	522
76	Kava (<i>Piper methysticum</i> Forster)	525
77	Lavender (<i>Lavandula</i> Species)	532
78	Licorice (<i>Glycyrrhiza</i> Species)	537
79	Ma Huang (<i>Ephedra</i> Alkaloids)	545
80	Milk Thistle [<i>Silybum marianum</i> (L.) Gaertner]	553
81	Passionflower (<i>Passiflora incarnata</i> L.)	558
82	Pennyroyal and Pulegone (<i>Mentha pulegium</i> L.)	563
83	Purple Coneflower and Other <i>Echinacea</i> Species	568
84	Rosemary (<i>Rosmarinus officinalis</i> L.)	574
85	Rue (<i>Ruta graveolens</i> L.)	579
86	Sassafras [<i>Sassafras albidum</i> (Nutt.) Nees]	582
87	Saw Palmetto [<i>Serenoa repens</i> (Bartram) J.K. Small]	586
88	Senna (<i>Senna alexandrina</i> P. Mill.)	591
89	Skullcap (<i>Scutellaria lateriflora</i> L.)	596
90	St. John's Wort (<i>Hypericum perforatum</i> L.)	600
91	Star Anise (<i>Illicium verum</i> Hook. F. and <i>Illicium anisatum</i> L.)	607
92	Star Fruit (<i>Averrhoa carambola</i> L.)	611
93	Tansy (<i>Tanacetum vulgare</i> L.)	614
94	Valerian (<i>Valeriana officinalis</i> L.)	617
95	Yarrow (<i>Achillea millefolium</i> L.)	623
96	Yohimbe Bark and Yohimbine (<i>Pausinystalia yohimbe</i> Pierre ex Beille)	627
II	Essential Oils	632
97	Citronella Oil [<i>Cymbopogon nardus</i> (L.) Rendle]	632
98	Citrus Oil and Limonene	635
99	Eucalyptus Oil (<i>Eucalyptus</i> Species)	644

100	Neem Oil (Margosa Oil) (<i>Azadirachta indica</i> Adr. Juss.)	648
101	Peppermint Oil (<i>Mentha x piperita</i> L.)	653
102	Tea Tree Oil (<i>Melaleuca</i> Species)	658
103	Tung Oil (<i>Aleurites fordii</i> Hemsl.)	663
104	Turpentine and Pine Oil (<i>Pinus</i> Species)	666

PART 4 TOXIC PLANTS 673

I Plant Dermatitis 677

105	Plant Dermatitis	677
-----	------------------	-----

II Bulbs, Rhizomes, and Tubers 690

106	Buttercup Family	690
107	Colchicine-Containing Plants	693
108	Daffodils and Other Emetic Bulbs	703
109	Death Camas	707
110	Kaffir Lily [<i>Clivia miniata</i> (Lindley) Bosse]	710
111	Snowdrop (<i>Galanthus nivalis</i> L.)	712
112	Zephyr Lily (<i>Zephyranthes</i> Species)	716

III Beans 718

113	Castor Bean and Ricin (<i>Ricinus communis</i> L.)	718
114	Cowitch and Horse Eye Bean (<i>Mucuna</i> Species)	727
115	Jequirity Bean and Abrin (<i>Abrus precatorius</i> L.)	729
116	Mescal Bean [<i>Sophora secundiflora</i> (Ortega) Lagasca ex DC.]	733

IV Nonwoody Plants (Herbs) 736

117	Aconite Poisoning and Monkshood	736
118	African Blue Lily (<i>Agapanthus</i> Species)	743
119	Red Baneberry [<i>Actaea rubra</i> (Aiton) Willd.]	745
120	Begonias	747
121	Yellow Bird-of-Paradise [<i>Caesalpinia gilliesii</i> (Hook.) Wallich ex D. Dietr.]	749
122	Century Plant (<i>Agave americana</i> L.)	751
123	Cleistanthin, Diterpene Esters, and the Spurge Family (Euphorbiaceae)	754
124	Cyanogenic Plants and Laetrile®	760
125	Dieffenbachia and Other Oxalate-Containing House Plants	768

126	Digitalis-Containing Flowers (Foxglove, Lily of the Valley)	773
127	Jimson Weed and Other Belladonna Alkaloids	776
128	Lupines and False Lupine	784
129	Mayapple (<i>Podophyllum peltatum</i> L.)	788
130	Mistletoe	792
131	Poison Hemlock (<i>Conium maculatum</i> L.)	796
132	Pokeweed (<i>Phytolacca americana</i> L.)	800
133	European Bittersweet and Other <i>Solanum</i> Species	803
134	Sweet Pea and Osteolathyrism	806
135	Tree Tobacco and Other Piperidine-Containing Plants	809
136	<i>Veratrum</i> Alkaloids	815
137	Wandering Jew (<i>Tradescantia fluminensis</i> Vellozo)	819
138	Water Hemlock and Water Dropwort	821
139	White Snakeroot [<i>Ageratina altissima</i> (L.) King & H.E. Robins]	826
V	Shrubs and Vines	829
140	Barbados Nut (<i>Jatropha curcas</i> L.)	829
141	Boxwood (<i>Buxus sempervirens</i> L.)	832
142	Buckthorn [<i>Karwinskia humboldtiana</i> (J.A. Schultes) Zucc.]	834
143	Cactus	837
144	Carolina Jessamine [<i>Gelsemium sempervirens</i> (L.) St. Hil.]	841
145	Daphne (<i>Daphne mezereum</i> L.)	843
146	Dog Laurel (<i>Leucothoe</i> Species)	845
147	Dogbane Family and Cardenolides	847
148	Holly (<i>Ilex</i> Species)	861
149	Honeysuckle (<i>Lonicera</i> Species)	863
150	Ivy and Falcarinol	865
151	Lantana (<i>Lantana camara</i> L.)	867
152	Rhododendrons and Grayanotoxins	870
153	Snowberry [<i>Symphoricarpos albus</i> (L.) Blake]	874
154	Squirting Cucumber [<i>Ecballium elaterium</i> (L.) A. Richard]	876
155	Wisteria	879
VI	Trees	881
156	Black Locust (<i>Robinia pseudoacacia</i> L.)	881
157	Buckeye (<i>Aesculus</i> Species)	883
158	Chinaberry (<i>Melia azedarach</i> L.)	886

159	Golden Chain Tree (<i>Laburnum anagyroides</i> Medikus)	889
160	Karaka Nut (<i>Corynocarpus laevigatus</i> J.R. & G. Forst.)	892
161	Oaks (<i>Quercus</i> Species)	894
162	Pepper Tree (<i>Schinus</i> Species)	897
163	Yew (<i>Taxus</i> Species)	899

PART 5 VENOMOUS ANIMALS 905

I	Arthropods	909
A	Arachnids	909
164	Mites and Ticks (Order: Acari)	909
165	Scorpions (Order: Scorpiones)	914
166	Spiders (Order: Araneae)	925
B	Centipedes	950
167	Centipedes (Subclass: Chilopoda)	950
C	Insects	954
168	Bees, Wasps, and Ants (Order: Hymenoptera)	954
169	Bugs and Blister Beetles	969
170	Fleas (Order: Siphonaptera)	976
171	Flies and Mosquitoes (Order: Diptera)	979
172	Lice (Order: Phthiraptera)	983
173	Moths and Butterflies (Order: Lepidoptera)	988
II	Reptiles	996
174	Amphibians—Toads, Frogs, Salamanders, and Newts (Class: Amphibia)	996
175	Gila Monster and Beaded Lizard	1008
176	Terrestrial Snakes (Suborder: Serpentes)	1013
177	Sea Snakes	1074
III	Marine Invertebrates	1078
178	Cone Shells and Blue-Ringed Octopus (Phylum: Mollusca)	1078
179	Jellyfish, Hydroids, Sea Anemones, and Corals (Phylum: Cnidaria)	1085
180	Sponges (Phylum: Porifera)	1102
181	Starfish, Sea Urchins, Sea Cucumbers, and Fireworms (Phylum: Echinodermata)	1105

IV	Eels and Lampreys	1112
182	Moray Eel (Superclass: Agnatha)	1112
V	Fish	1115
183	Bony Fish (Class: Osteichthyes)	1115
184	Cartilaginous Fish (Class: Chondrichthyes)	1128
VI	Mammals	1132
185	Mammals	1132
	INDEX	1135