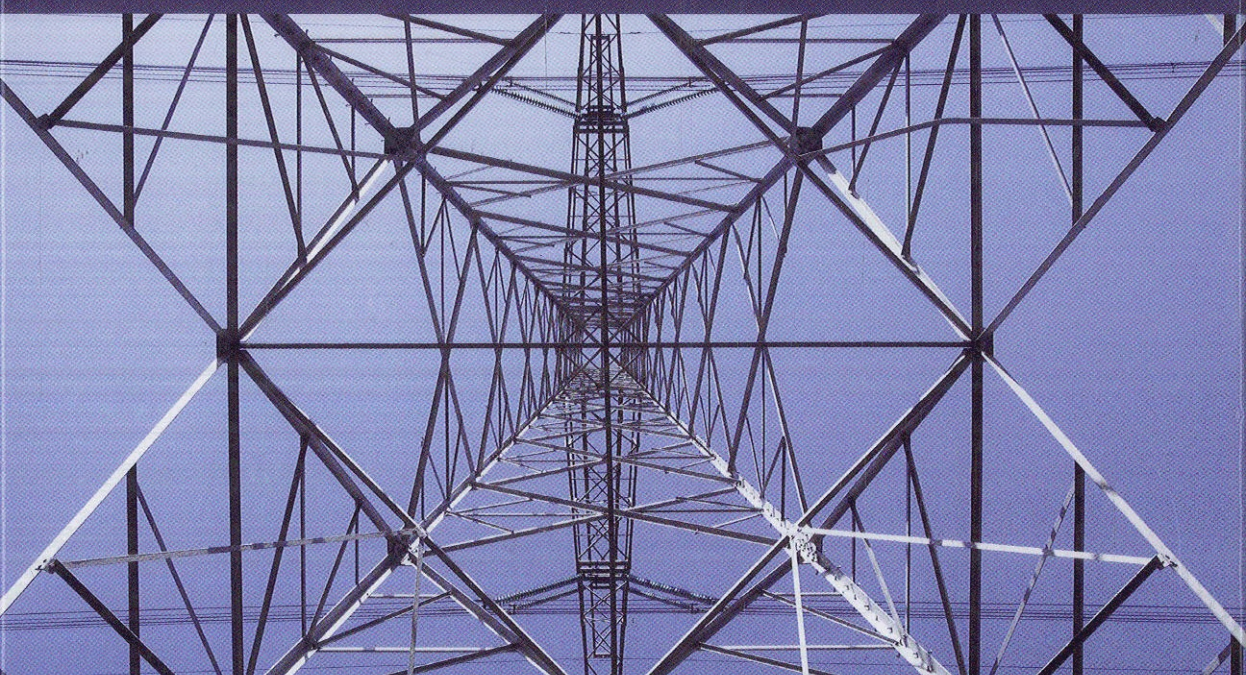


Pieter Schavemaker

Lou van der Sluis

electrical power system essentials



 WILEY

Contents

Preface

ix

1	Introduction to Power System Analysis	1
1.1	Introduction	1
1.2	Scope of the Material	2
1.3	General Characteristics of Power Systems	4
1.3.1	AC versus DC Systems	4
1.3.2	50 Hz and 60 Hz Frequency	8
1.3.3	Balanced Three-phase Systems	10
1.3.4	Voltage Levels	17
1.4	Phasors	19
1.4.1	Network Elements in the Phasor Domain	21
1.4.2	Calculations in the Phasor Domain	23
1.5	Equivalent Line-to-Neutral Diagrams	28
1.6	Power in Single-phase Circuits	29
1.6.1	Active and Reactive Power	29
1.6.2	Complex Power	33
1.6.3	Power Factor	36
1.7	Power in Three-phase Circuits	38
1.8	Per Unit Normalization	39
1.9	Power System Structure	43
2	The Generation of Electric Energy	45
2.1	Introduction	45
2.2	Thermal Power Plants	46
2.2.1	The Principles of Thermodynamics	47
2.3	Nuclear Power Plants	52
2.3.1	Nuclear Fission	52
2.3.2	Nuclear Fusion	56

2.4	Renewable Energy	56
2.4.1	Wind Energy and Wind Turbine Concepts	56
2.4.2	Hydropower and Pumped Storage	60
2.4.3	Solar Power	61
2.4.4	Geothermal Power	65
2.5	The Synchronous Machine	67
3	The Transmission of Electric Energy	75
3.1	Introduction	75
3.2	Transmission and Distribution Network	76
3.3	Network Structures	78
3.4	Substations	81
3.5	Substation Concepts	83
3.6	Protection of Transmission and Distribution Networks	86
3.7	Transformers	87
3.8	Power Carriers	98
3.8.1	Overhead Transmission Lines	100
3.8.2	Underground Cables	113
4	The Utilization of Electric Energy	119
4.1	Introduction	119
4.2	Types of Load	120
4.2.1	Mechanical Energy	121
4.2.2	Light	126
4.2.3	Heat	128
4.2.4	DC Electrical Energy	128
4.2.5	Chemical Energy	131
4.3	Classification of Grid Users	132
4.3.1	Residential Loads	132
4.3.2	Commercial and Industrial Loads	134
4.3.3	Electric Railways	135
5	Power System Control	139
5.1	Introduction	139
5.2	Basics of Power System Control	142
5.3	Active Power and Frequency Control	144
5.3.1	Primary Control	144
5.3.2	Secondary Control or Load Frequency Control (LFC)	149
5.4	Voltage Control and Reactive Power	152
5.4.1	Generator Control (AVR)	152
5.4.2	Tap-changing Transformers	154
5.4.3	Reactive Power Injection	156
5.5	Control of Transported Power	160
5.5.1	Controlling Active Power Flows	160

5.5.2	Controlling Reactive Power Flows	164
5.5.3	Unified Power-Flow Controller (UPFC)	166
5.6	Flexible AC Transmission Systems (FACTS)	168
6	Energy Management Systems	169
6.1	Introduction	169
6.2	Loadflow or Power Flow Computation	170
6.2.1	Loadflow Equations	170
6.2.2	General Scheme of the Newton-Raphson Loadflow	180
6.2.3	Decoupled Loadflow	184
6.2.4	DC Loadflow	189
6.3	Optimal Powerflow	192
6.4	State Estimator	193
6.4.1	General Scheme of the State Estimator	196
6.4.2	Bad Data Analysis	198
6.4.3	Statistical Analysis of the State Estimator	204
7	Electricity Markets	209
7.1	Introduction	209
7.2	Electricity Market Structure	210
7.3	Market Clearing	211
7.4	Social Welfare	214
7.5	Market Coupling	215
8	Future Power Systems	221
8.1	Introduction	221
8.2	Renewable Energy	222
8.3	Decentralized or Distributed Generation	223
8.4	Power-electronic Interfaces	224
8.5	Energy Storage	225
8.6	Blackouts and Chaotic Phenomena	226
8.6.1	Nonlinear Phenomena and Chaos	226
8.6.2	Blackouts	229

Appendices

A	Maxwell's Laws	237
A.1	Introduction	237
A.2	Power Series Approach to Time-varying Fields	238
A.3	Quasi-static Field of a Parallel-plate Capacitor	240
A.4	Quasi-static Field of a Single-turn Inductor	245
A.5	Quasi-static Field of a Resistor	250
A.6	Circuit Modeling	253

B	Power Transformer Model	255
B.1	Introduction	255
B.2	The Ideal Transformer	255
B.3	Magnetically Coupled Coils	258
B.4	The Non-ideal Transformer	262
B.5	Three-phase Transformer	264
C	Synchronous Machine Model	267
C.1	Introduction	267
C.2	The Primitive Synchronous Machine	267
C.3	The Single-phase Synchronous Machine	273
C.4	The Three-phase Synchronous Machine	278
C.5	Synchronous Generator in the Power System	283
D	Induction Machine Model	287
D.1	Introduction	287
D.2	The Basic Principle of the Induction Machine	288
D.3	The Magnetic Field in the Air-Gap	293
D.4	A Simple Circuit Model for the Induction Machine	297
D.5	Induction Motor in the Power System	300
E	The Representation of Lines and Cables	303
E.1	Introduction	303
E.2	The Long Transmission Line	303
E.3	The Medium-length Transmission Line	308
E.4	The Short Transmission Line	309
E.5	Comparison of the Three Line Models	310
E.6	The Underground Cable	312
	References	313
	List of Abbreviations	317
	List of Symbols	319
	Index	321