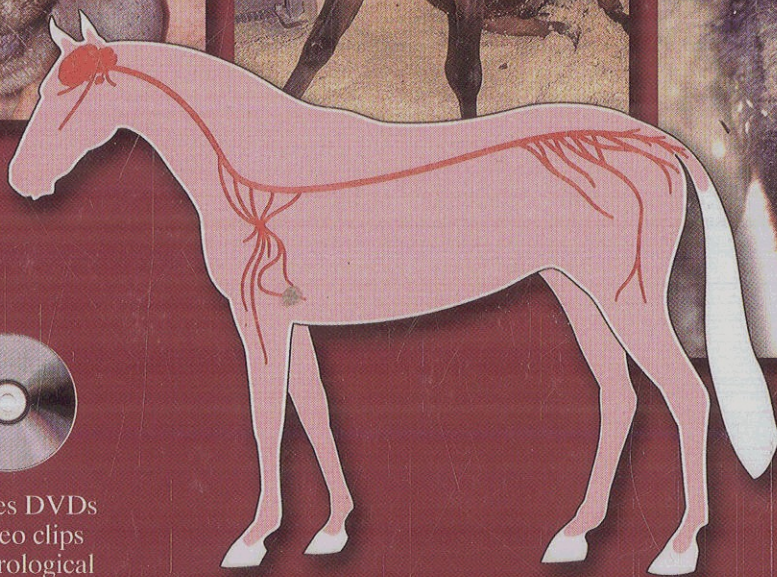
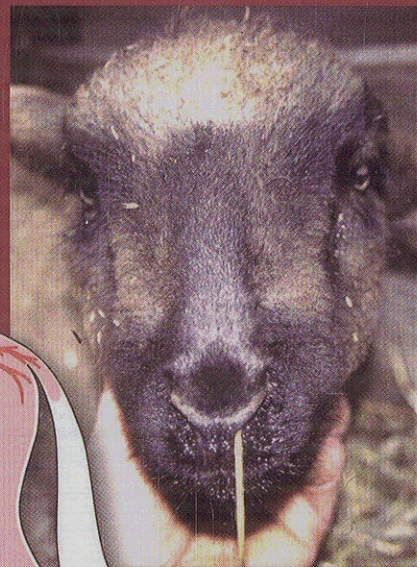
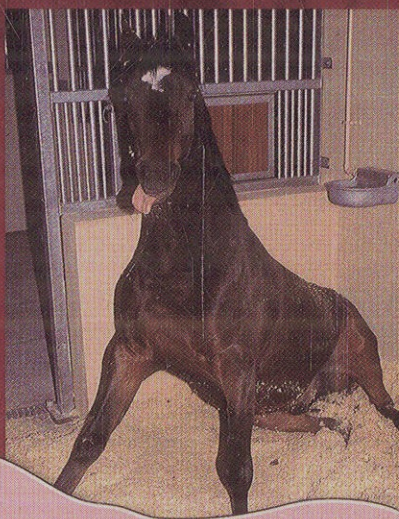


Large Animal Neurology

Second Edition



Includes DVDs
of video clips
of neurological
disorders

Joe Mayhew

 WILEY-BLACKWELL

Contents

Preface to second edition	vii
Preface to first edition	ix

PART I EVALUATION OF LARGE ANIMAL NEUROLOGIC PATIENTS

1	Neuroanatomy	3
2	Neurologic evaluation	11
3	Ancillary diagnostic aids	47
4	Pathologic responses of the nervous system	62

PART II CLINICAL PROBLEMS IN LARGE ANIMAL NEUROLOGY

5	Disorders of behavior	77
6	Seizures and epilepsy	83
7	Sleep disorders	87
8	Coma and altered states of consciousness	90
9	Blindness	94
10	Miosis, mydriasis, anisocoria, and Horner's syndrome	96
11	Strabismus	101
12	Dropped mandible and masticatory muscle atrophy	104
13	Decreased and increased facial sensation	108
14	Facial paralysis and facial spasm	112
15	Dysphagia	115

16	Dilated esophagus	119
17	Laryngeal paresis and paralysis; roaring	121
18	Tongue paralysis	123
19	Head tilt, circling, nystagmus, and other signs of vestibular abnormalities	125
20	Deafness	130
21	Disorders of posture and movement	132
22	Incoordination of the head and limbs: cerebellar diseases	143
23	Tetraparesis, paraparesis, and ataxia of the limbs: spinal cord diseases	147
24	Diffuse weakness	154
25	Paresis and paralysis of one limb: monoparesis	157
26	Urinary bladder distention, dilated rectum and anus, and atonic tail: cauda equina syndrome	163
27	Pruritus, self-mutilation, headshaking, complex regional pain syndrome, and miscellaneous distressing disorders	167
28	Autonomic nervous system dysfunction	173
29	Vertebral and paravertebral problems: stiff neck and sore back	177

PART III MECHANISMS AND SPECIFIC DISEASES

30	Congenital, genetic, and familial disorders	183
31	Infectious, inflammatory, and immune diseases	225
32	Physical and chemical causes	294
33	Toxic diseases	321
34	Nutritional diseases	360
35	Metabolic diseases	374
36	Neoplasms and other tumors	385
37	Multifactorial and idiopathic disorders	392

PART IV VIDEO LIBRARY

Video library index	433
Index	443