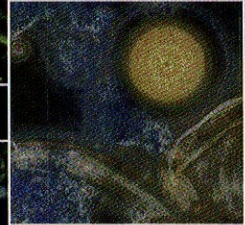
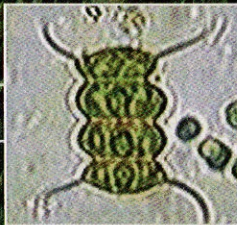


Caye M. Drapcho Nghiem Phu Nhuan Terry H. Walker



Biofuels Engineering Process Technology



Contents

| | |
|---------------|----|
| Preface | xi |
|---------------|----|

Part 1 The Basics

| | |
|---|-----------|
| 1 Introduction | 3 |
| 1.1 Biorefinery | 3 |
| 1.2 Description of Biofuels | 5 |
| 1.3 Energy Use | 6 |
| 1.4 Efficiency of Energy Use | 8 |
| 1.5 Biofuels Production and Use | 10 |
| 1.6 Alternative Energies | 12 |
| 1.7 Environmental Impact | 13 |
| 1.8 Book Overview | 14 |
| References | 15 |
| 2 Harvesting Energy from Biochemical Reactions ... | 17 |
| 2.1 Introduction and Basic Definitions | 17 |
| 2.2 Biochemical Pathways Review for Organoheterotrophic Metabolism | 19 |
| 2.2.1 Aerobic Respiration | 19 |
| 2.2.2 Anaerobic Respiration | 23 |
| 2.2.3 Fermentation | 25 |
| 2.3 Biochemical Pathways Overview for Lithotrophic Growth | 30 |
| 2.4 Biochemical Pathways Overview for Phototrophic Metabolism | 31 |
| 2.4.1 Light Reactions | 32 |
| 2.4.2 Anabolic (Dark) Reactions | 33 |
| 2.5 Definition and Importance of Chemical Oxygen Demand | 33 |
| Acknowledgments | 35 |
| References | 36 |
| 3 Microbial Modeling of Biofuel Production | 37 |
| 3.1 Introduction | 37 |
| 3.2 Summary of Microbial Growth Models | 37 |
| 3.2.1 Unstructured, Single Limiting Nutrient Models | 38 |
| 3.2.2 Inhibition Models | 39 |

| | | |
|-------|---|----|
| 3.2.3 | Models for Multiple Limiting Substrates | 42 |
| 3.2.4 | Yield Parameters | 44 |
| 3.3 | Kinetic Rate Expressions | 45 |
| 3.3.1 | Temperature Effects | 47 |
| 3.4 | Bioreactor Operation and Design for Biofuel Production | 48 |
| 3.4.1 | Batch Reactors | 50 |
| 3.4.2 | Continuous Stirred Tank Reactors | 50 |
| 3.4.3 | CSTR with Cell Recycle | 52 |
| 3.4.4 | Fed-Batch Systems | 54 |
| 3.4.5 | Plug Flow Systems | 55 |
| 3.5 | Bioreactor Design Strategies | 57 |
| 3.6 | Modeling of Glucose Utilization and Hydrogen Production | 58 |
| 3.6.1 | Batch Fermentations and Simulations | 59 |
| 3.6.2 | CSTR Fermentations and Simulations | 61 |
| | Summary | 64 |
| | References | 65 |

Part 2 **Biofuels**

| | | |
|----------|-------------------------------------|-----------|
| 4 | Biofuel Feedstocks | 69 |
| 4.1 | Starch Feedstocks | 69 |
| 4.1.1 | Cereal Grains | 69 |
| 4.1.2 | Other Grains | 78 |
| 4.1.3 | Tubers and Roots | 78 |
| 4.2 | Sugar Feedstocks | 79 |
| 4.2.1 | Sugarcane | 79 |
| 4.2.2 | Sugar Beet | 80 |
| 4.3 | Lignocellulosic Feedstocks | 80 |
| 4.3.1 | Forest Products and Residues | 81 |
| 4.3.2 | Agricultural Residues | 82 |
| 4.3.3 | Agricultural Processing By-Products | 84 |
| 4.3.4 | Dedicated Energy Crops | 84 |
| 4.4 | Plant Oils and Animal Fats | 88 |
| 4.5 | Miscellaneous Feedstocks | 91 |
| 4.5.1 | Animal Wastes | 91 |
| 4.5.2 | Municipal Solid Waste | 94 |
| | References | 94 |

| | | |
|----------|--|------------|
| 5 | Ethanol Production | 105 |
| 5.1 | Ethanol Production from Sugar and Starch | |
| | Feedstocks | 105 |
| | 5.1.1 Microorganisms | 105 |
| | 5.1.2 Process Technology | 111 |
| 5.2 | Ethanol Production from Lignocellulosic | |
| | Feedstocks | 133 |
| | 5.2.1 Basic Concept | 133 |
| | 5.2.2 The Sugar Platform | 134 |
| | 5.2.3 The Syngas Platform | 158 |
| | Acknowledgments | 174 |
| | References | 174 |
| 6 | Biodiesel | 197 |
| 6.1 | Introduction | 197 |
| | 6.1.1 Environmental Considerations | 199 |
| 6.2 | Biodiesel Production Chemistry and | |
| | Thermodynamic Aspects | 201 |
| | 6.2.1 Transesterification | 202 |
| | 6.2.2 Esterification | 202 |
| | 6.2.3 Lipase-Catalyzed Interesterification | |
| | and Transesterification | 203 |
| | 6.2.4 Side Reactions: Saponification | |
| | and Hydrolysis | 203 |
| | 6.2.5 Alcohol Effect | 204 |
| | 6.2.6 Base or Alkali Catalysis | 204 |
| | 6.2.7 Acid Catalysis | 206 |
| | 6.2.8 Enzyme Catalysis | 208 |
| | 6.2.9 Supercritical Esterification | |
| | and Transesterification | 208 |
| | 6.2.10 Thermodynamics and | |
| | Reaction Kinetics | 210 |
| 6.3 | Oil Sources and Production | 219 |
| | 6.3.1 Plant Oils | 219 |
| | 6.3.2 Microbial and Algal Oils | 223 |
| | 6.3.3 Used Cooking Oils | 233 |
| | 6.3.4 Straight Vegetable Oil | 233 |
| | 6.3.5 Biosynthesis of Oils | |
| | and Modification | 234 |
| 6.4 | Coproducts | 236 |
| 6.5 | Methods of Biodiesel Production | 238 |
| | 6.5.1 General Biodiesel Production | |
| | Procedures | 239 |
| | 6.5.2 Pilot and Commercial Scale | 245 |
| | 6.5.3 Quality Control Analytical | |
| | Technique | 247 |

| | | |
|----------|--|------------|
| 6.6 | Economics | 250 |
| 6.6.1 | Feedstock Cost | 252 |
| 6.6.2 | Manufacturing Cost | 255 |
| 6.6.3 | Capital Cost | 255 |
| 6.6.4 | Operating Cost | 257 |
| 6.7 | Summary and Conclusions | 258 |
| | Acknowledgments | 259 |
| | Problems | 260 |
| | References | 262 |
| 7 | Biological Production of Hydrogen | 269 |
| 7.1 | Introduction | 269 |
| 7.1.1 | Important Enzymes | 269 |
| 7.1.2 | Abiotic H ₂ Production | 271 |
| 7.2 | Photobiological H ₂ Production | 271 |
| 7.2.1 | Direct Biophotolysis | 272 |
| 7.2.2 | Indirect Biophotolysis | 273 |
| 7.2.3 | Photofermentation | 273 |
| 7.2.4 | Photobiological H ₂ Production Potential | 274 |
| 7.3 | Hydrogen Production by Fermentation | 274 |
| 7.3.1 | Overview | 274 |
| 7.3.2 | Energetics | 275 |
| 7.3.3 | Thermotogales | 276 |
| 7.3.4 | Biochemical Pathway for Fermentative H ₂ Production by <i>Thermotoga</i> | 276 |
| 7.3.5 | Hydrogen Production by Other Bacteria | 277 |
| 7.3.6 | Coproduct Formation | 279 |
| 7.3.7 | Batch Fermentation | 280 |
| 7.3.8 | Hydrogen Inhibition | 281 |
| 7.3.9 | Role of Sulfur—Sulfidogenesis | 281 |
| 7.3.10 | Use of Other Carbon Sources Obtained from Agricultural Residues | 284 |
| 7.3.11 | Process and Culture Parameters | 287 |
| 7.4 | Hydrogen Detection, Quantification, and Reporting | 290 |
| 7.4.1 | Hydrogen Detection | 291 |
| 7.4.2 | Total Gas Pressure | 292 |
| 7.4.3 | Water Vapor Pressure | 292 |
| 7.4.4 | Hydrogen Partial Pressure | 292 |
| 7.4.5 | Hydrogen Gas Concentration | 293 |
| 7.4.6 | Hydrogen Concentration Expressed as mol H ₂ /L Media | 294 |

| | | |
|----------|---|------------|
| | 7.4.7 Hydrogen Production Rate | 294 |
| | 7.4.8 Dissolved H ₂ Concentration in Liquid | 294 |
| 7.5 | Fermentation Bioreactor Sizing for PEM Fuel Cell Use | 297 |
| | Acknowledgment | 299 |
| | References | 299 |
| 8 | Microbial Fuel Cells | 303 |
| 8.1 | Overview | 303 |
| 8.2 | Biochemical Basis | 303 |
| 8.3 | Past Work Summary | 305 |
| 8.4 | Fuel Cell Design | 308 |
| | 8.4.1 Anode Compartment | 308 |
| | 8.4.2 Microbial Cultures | 309 |
| | 8.4.3 Redox Mediators | 310 |
| | 8.4.4 Cathode Compartment | 311 |
| | 8.4.5 Exchange Membrane | 312 |
| | 8.4.6 Power Density as Function of Circuit Resistance | 313 |
| 8.5 | MFC Performance Methods | 314 |
| | 8.5.1 Substrate and Biomass Measurements | 314 |
| | 8.5.2 Basic Power Calculations | 315 |
| | 8.5.3 Calculation Example | 317 |
| 8.6 | MFC Performance | 318 |
| | 8.6.1 Power Density as Function of Substrate | 318 |
| | 8.6.2 Single-Chamber Versus Two-Chamber Designs | 320 |
| | 8.6.3 Single-Chamber Designs | 320 |
| | 8.6.4 Wastewater Treatment Effectiveness | 321 |
| 8.7 | Fabrication Example | 322 |
| 8.8 | Future Directions | 323 |
| | References | 325 |
| 9 | Methane | 329 |
| 9.1 | Introduction | 329 |
| 9.2 | Microbiology of Methane Production | 329 |
| | 9.2.1 Methanogenic Environments | 329 |
| | 9.2.2 Methane Process Description | 330 |
| | 9.2.3 Microbial Communities | 332 |
| 9.3 | Biomass Sources for Methane Generation | 334 |

| | | |
|-------|---|------------|
| 9.4 | Systems | 338 |
| 9.4.1 | Reactor Conditions | 339 |
| 9.4.2 | Process Design | 340 |
| 9.5 | Biogas Composition and Use | 343 |
| | References | 344 |
| | Appendix: Conversion Factors and Constants | 347 |
| | Index | 351 |