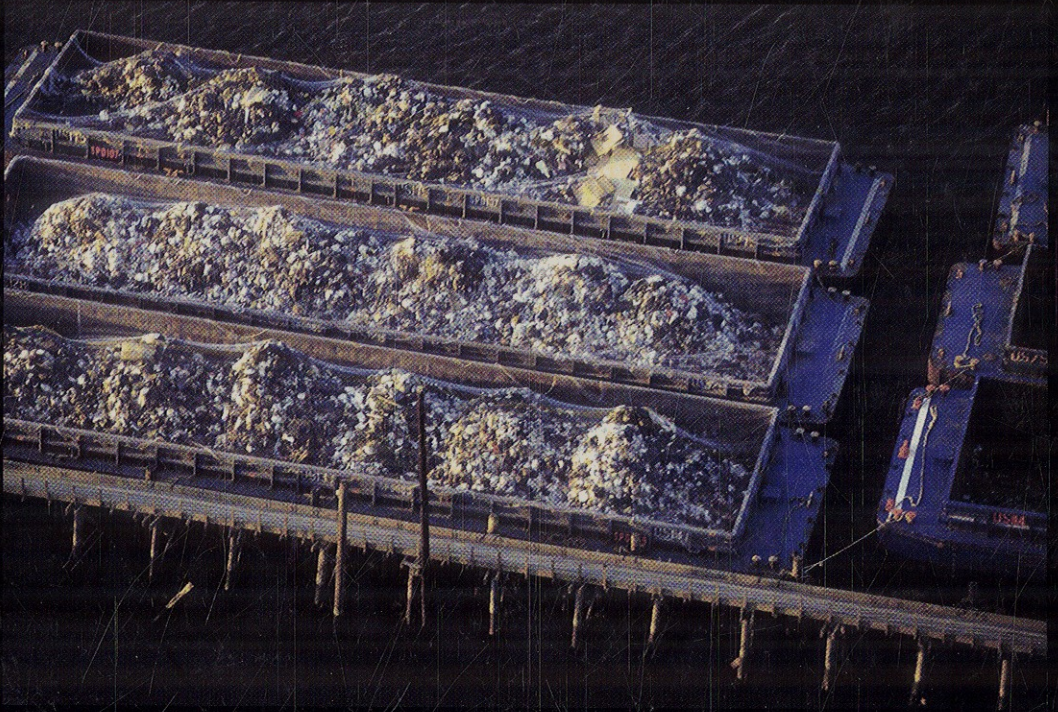


Environmental ENGINEERING



ENVIRONMENTAL HEALTH and SAFETY
for Municipal Infrastructure, Land Use and Planning, and Industry

SIXTH EDITION

Nelson L. NEMEROW, Franklin J. AGARDY, Patrick SULLIVAN, and Joseph A. SALVATO

CONTENTS

PREFACE	xvii
CONTRIBUTORS	xix
CHAPTER 1 INDUSTRIAL SOLID WASTES UTILIZATION AND DISPOSAL	1
<i>Salah M. El-Haggar</i>	
Introduction / 1	
Life Cycle Assessment and Cradle-To-Cradle Concept / 4	
Industrial Waste / 7	
Plastics Industry / 7	
Thermo Plastics / 9	
Thermosets / 12	
Mixed Plastic Wastes / 13	
Plastic and Cork Industry / 22	
Food Industry / 25	
Aerobic Fermentation Process / 25	
Anaerobic Fermentation Process / 29	
Cement Industry / 31	
Utilization through Cleaner Production Techniques / 33	
Industrial Ecology Approach / 34	
Recycling Opportunities / 36	
Final Remarks / 39	
Marble and Granite Industry / 40	
Marble and Granite Waste / 42	
Physical and Chemical Properties of Slurry / 43	

Scrapes /	44
Environmental Impacts and Mitigation /	44
Metal Foundry Industry /	51
Foundry Sand /	53
Uses of Foundry Sand /	54
Iron and Steel Industry /	55
Environmental Impacts /	56
The Problem in Egypt /	58
Potential Utilization of Slag /	58
Final Remarks /	64
Waste Industry /	65
Direct Waste Recycling Industry /	66
Multiple Waste Recycling Industry /	66
Waste Exchange Network Recycling Industry /	67
Environmentally Balanced Industrial Complexes /	69
Multiple Waste Recycling Industry /	70
Mechanical Tests /	71
Environmental Tests /	73
Final Remarks /	75
Disposal of Industrial Wastes /	76
References /	77
Bibliography /	80

CHAPTER 2 RESIDENTIAL AND INSTITUTIONAL ENVIRONMENT

83

<i>Xudong Yang</i>	
Substandard Housing and Its effects /	84
Growth of the Problem /	84
Critical Period /	86
Health, Economic, and Social Effects /	88
Appraisal of Quality of Living /	91
APHA Appraisal Method /	91
Census Data /	96
Health, Economic, and Social Factors /	96
Planning /	96
Environmental Sanitation and Hygiene Indices /	97
Other Survey Methods /	97
Health Principles /	99
Minimum Standards Housing Ordinance /	103

Housing Program / 104

Approach / 104

Components of a Good Housing Program / 105

Outline of a Housing Program / 107

Solutions to the Problem / 108

Selection of Work Areas / 110

Enforcement Program / 111

Enforcement Procedures / 114

Housing Form Paragraphs for Letters / 118

Structural Safety / 119

Incomplete Bathroom / 119

No Hot Water / 119

Leaking Water Closet / 121

Floors Not Water Repellent / 121

Exterior Paint Needed / 123

Rotted and Missing Siding / 123

Sagging Wall / 123

Loose Plaster / 124

Leaking Roof / 124

No Gutters or Rain Leaders / 124

No Handrails / 125

Lead Paint / 125

Refuse in Attic / 125

Water-Closet Flush Tank Not Operating Correctly / 125

Garbage Stored in Paper Box or Bag / 125

Dilapidated Garbage Shed / 125

Debris in Yard or Vacant Lot / 126

Dirty Apartment / 126

Overcrowded Sleeping Room / 126

No Window in Habitable Room / 127

Unlawful Third-Floor Occupancy / 127

Unlawful Cellar Occupancy / 127

Clogged Sewer / 127

Unvented Heater / 127

Furnace Flue Defective / 128

Rubber-Hose Gas Connection / 128

Rat Infestation / 128

Roach Infestation / 128

Overflowing Sewage Disposal System / 128

Improperly Protected Well-Water Supply / 129	
Major Repairs / 129	
Minor Repairs / 129	
Obtain at Least Three Estimates / 129	
Plumbing / 129	
Plumbing Code / 129	
Backflow Prevention / 134	
Indirect Waste Piping / 137	
Plumbing Details / 137	
Indoor Air Quality / 137	
Causes and Sources of Indoor Air Pollution / 137	
Biological Contaminants and Health Effects / 140	
Other Contaminants / 141	
Ventilation / 147	
Respiratory Illness Control / 150	
Venting of Heating Units / 151	
Mobile Home Parks / 154	
Institution Sanitation / 155	
Institutions as Small Communities / 155	
Hospitals and Nursing Homes / 156	
Hospital and Related Wastes / 160	
Schools, Colleges, and Universities / 163	
Correctional Institutions / 163	
Environment Inspection and Report Outline / 167	
Day-Care Centers / 169	
References / 169	
Bibliography / 174	

CHAPTER 3 SOLID WASTE MANAGEMENT

177

<i>George Tchobanoglous</i>	
Definition of Terms / 178	
Integrated Waste Management / 180	
Source Reduction / 180	
Recycling and Composting / 182	
Combustion (Waste-to-Energy) / 183	
Landfills / 183	
Implementing Integrated Solid Waste Management / 184	
Sources, Characteristics, and Quantities of Solid Waste / 185	
Sources of Solid Waste / 185	

- Characteristics of Solid Waste / 185
- Commercial and Household Hazardous Waste / 189
- Construction and Demolition Debris / 192
- Special Wastes Collected Separately / 193
- On-Site Handling and Storage / 195
 - Low-Rise Residential Areas / 196
 - Low- and Medium-Rise Apartments / 198
 - High-Rise Apartments / 198
 - Commercial and Institution / 199
- Solid Waste Collection / 199
 - Type of Service / 199
 - Collection Frequency / 199
 - Types of Collection Systems / 202
 - Personnel Requirements / 204
 - Health Issues / 207
- Transfer and Transport / 209
 - Economic Analysis of Transfer Operations / 209
 - Types of Transfer Stations / 210
 - Vehicles for Uncompacted Wastes / 211
 - Transfer Station Siting Issues / 213
- Waste Reduction and Materials Recovery / 213
 - Waste Reduction / 214
 - Materials Recovery and Recycling / 217
 - Processing Technologies for the Recovery of Materials / 218
 - Implementation of Materials Recovery Facilities / 218
 - Technical Considerations in the Planning and Design of MRFs / 224
- Composting / 225
 - Uses of Compost and Constraints to Its Use / 229
 - Composting Process / 230
 - Composting Technologies / 232
 - Compost Process Design and Operational Considerations / 236
 - Issues in the Implementation of Composting Facilities / 239
 - Health Hazards / 240
- Sanitary Landfill Planning, Design, and Operation / 242
 - Sanitary Landfill Planning / 242
 - Sanitary Landfill Methods / 246
 - General Landfill Design Issues / 251

Leachate Generation, Control, and Treatment /	252
Landfill Gas Generation, Control, and Recovery and Utilization /	258
Management of Surface Waters /	263
Landfill Mining /	267
Landfill Facilities and Equipment for Disposal by Sanitary Landfill /	268
Landfill Operation and Supervision /	274
Summary of Recommended Operating Practices /	276
Site Closure or Conversion /	278
Incineration /	279
Description of Operation of MSW Incinerator /	279
Combustion Products and Residues /	281
Types of Incinerators (Combusters) /	283
Control of the Incineration Process /	286
Residue Management /	287
Site Selection, Plant Layout, and Building Design /	289
Issues in the Implementation of Incineration Facilities /	290
Hazardous Wastes /	292
Definition of Hazardous Waste /	292
Legislation /	293
Generation of Hazardous Waste /	296
Hazardous Waste Management /	300
References /	305
Bibliography /	307

CHAPTER 4 AIR POLLUTION AND NOISE CONTROL

309

Robert Jacko and Timothy La Breche

Air Pollution /	309
Health Effects /	310
Economic Effects /	311
Effects on Plants /	314
Effects on Animals /	315
Aesthetic, Climatic, and Related Effects /	315
Sources and Types of Air Pollution /	320
Manmade Sources /	321
Natural Sources /	321
Types of Air Pollutants /	325
Sampling and Measurement /	326

- Particulate Sampling—Ambient Air / 327
- Gas Sampling / 329
- Smoke and Soiling Measurement / 331
- Stack Sampling / 332
- Measurement of Materials' Degradation / 333
- Environmental Factors / 333
 - Meteorology / 334
 - Topography / 338
- Air Pollution Surveys / 340
 - Inventory / 340
 - Air Sampling / 341
 - Basic Studies and Analyses / 341
- Ambient Air Quality Standards / 342
 - Federal Standards / 342
 - Clean Air Act of 1990 / 345
 - Clean Air Act Amendments of 1997 / 346
 - Pollutant Standards Index (PSI) / 347
- Controls / 347
 - Source Control / 347
 - Emission Control Equipment / 351
 - Particulate Collectors and Separators / 351
 - Gaseous Collectors and Treatment Devices / 357
 - Dilution by Stack Height / 358
 - Planning and Zoning / 360
 - Air Quality Modeling / 361
- Program and Enforcement / 363
 - General / 363
 - Organization and Staffing / 365
 - Regulation and Administration / 365
- Noise Control / 367
 - Definitions and Explanation of Selected Terms and Properties of Sound / 367
 - Effects of Noise—A Health Hazard / 375
 - Sources of Noise / 376
 - Measurement of Noise / 377
 - Methods for Noise Control / 378
 - Control of Industrial Noise / 380
 - Control of Transport Noise / 381
 - Noise Reduction / 381

Federal Regulations / 384

State and Local Regulations / 387

References / 388

Bibliography / 391

Air Pollution / 391

Noise Control / 393

CHAPTER 5 SURVEYING AND MAPPING FOR ENVIRONMENTAL ENGINEERING

395

Kurt W. Bauer

Introduction / 395

Importance of Maps / 396

Basic Definitions and Concepts / 396

Foundational Elements for Creation of Maps / 396

Map Projections / 398

Tangent Plane Projection / 398

Lambert Projection / 399

Mercator Projection / 401

Transverse Mercator Projection / 401

Other Projections / 401

The State Plane Coordinate System / 402

Survey Control Networks / 402

The National Geodetic Survey Control System / 403

U.S. Public Land Survey System / 405

Map Requirements for Planning and Environmental Engineering / 407

Desirable Control Survey and Mapping System / 409

Applications of Mapping System / 410

Flood Hazard Area Mapping / 416

Wetland Area Mapping / 416

Public Works Management Information System / 419

Sanitary Sewerage System Attribute Data / 421

Survey Methods / 426

Bibliography / 428

CHAPTER 6 PLANNING AND ENVIRONMENTAL ASSESSMENT

429

Kurt W. Bauer

Introduction / 429

Definition of Terminology / 430

- Criteria for Good Planning / 431
- Institutional Structure for Urban Planning / 432
- The Comprehensive Plan / 433
- The Planning Process / 437
 - Definition of Planning Area / 438
 - Inventory and Analysis / 438
 - Formulation of Objectives and Standards / 443
 - Identification of Development Requirements / 443
 - Development and Evaluation of Alternative Plans / 444
 - Plan Selection and Adoption / 444
 - Plan Implementation and Policy Development / 445
- Public Works Development Process / 447
 - Outline for a Sewerage Facilities Planning Report / 447
 - Outline for a Stormwater Management Facilities Planning Report / 453
 - Outline for a Water Supply Facilities Planning Report / 460
- Public Participation / 465
- Continuing Nature of Comprehensive Planning Process / 466
- Project Planning / 467
- Site Planning / 469
 - Introduction / 469
 - Site Selection / 470
 - Site Assessment / 471
 - Generally Desirable Site Features / 472
 - Site Inventory / 473
 - Improvements Needed / 478
 - Site Design / 478
- Land Subdivision / 480
 - Subdivision Design / 482
 - Site Selection and Assessment / 484
 - Alternative Subdivision Design Types / 486
 - Utility Services / 492
 - Fiscal Analysis / 494
- Program Planning / 494
- Operational Planning / 496
 - Public Health Element of Comprehensive Plan / 497
- Role of Engineering / 502
- Environmental Assessment and Impact Statements / 503
- Environmental Impact Analysis / 505

National Environmental Policy Act (NEPA) / 505

Terminology / 506

Scoping / 508

Recommended Format for Environmental Impact
Statement / 509

Content of an Environmental Impact Statement / 510

Selection and Analysis of Alternatives / 514

Comprehensive Assessment / 515

Bibliography / 524

INDEX

525