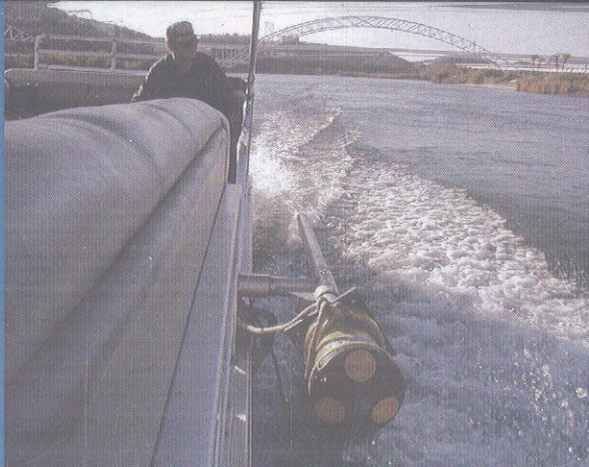
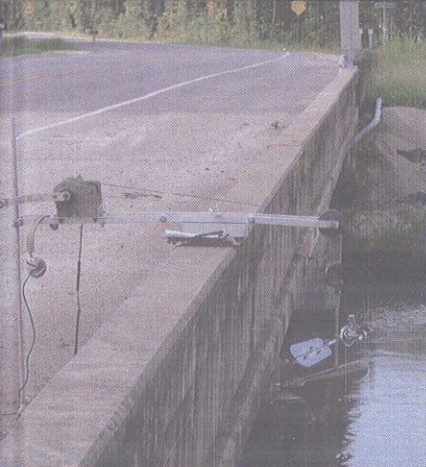
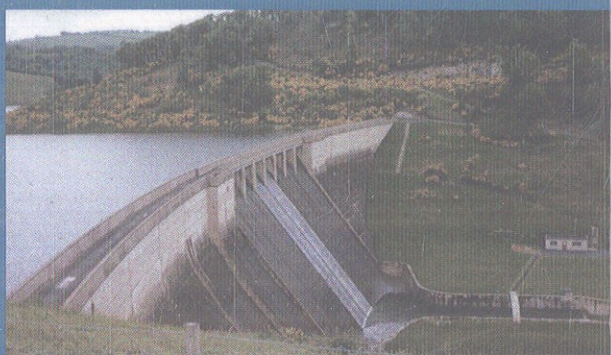
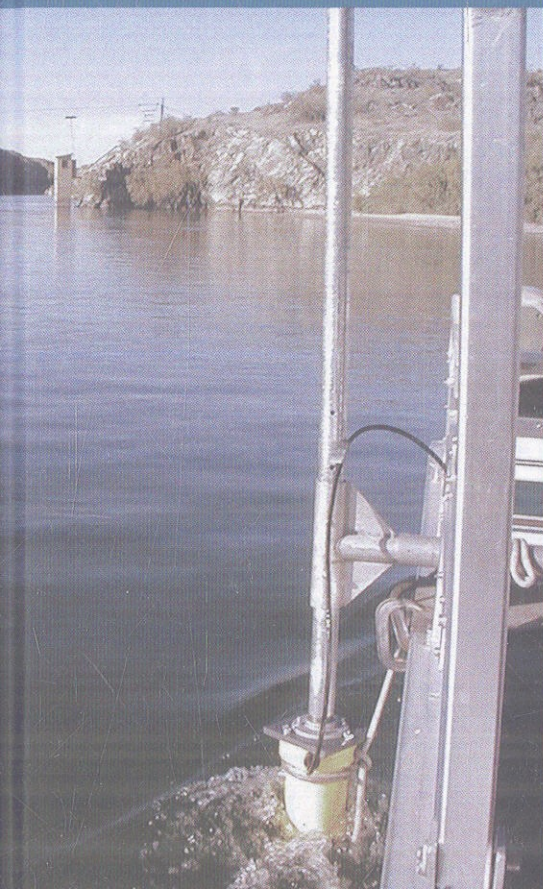


Third Edition



Streamflow Measurement

Reginald W. Herschy



Contents

<i>List of tables</i>	xiii
<i>List of figures</i>	xv
<i>Acknowledgements</i>	xxiii
<i>Preface</i>	xxv
1 Introduction	1
1.1 Global water	1
1.2 Climate change	1
1.3 Field measurements	2
1.4 Cost effectiveness	4
1.5 International standards in stream gauging	5
1.6 Summary of methods	5
1.7 Selection of method	9
Further reading	10
2 The velocity–area method of streamflow measurement	12
2.1 General	12
2.2 Spacing of verticals	12
2.3 Computation of current meter measurements	13
2.4 Measurement of velocity	20
2.5 Current meters	25
2.6 Rating of current meters	33
2.7 Considerations in current meter design	44
2.8 Care of current meters	46
2.9 Procedure for current meter measurement of discharge	46
2.10 The moving boat method	82
2.11 The electromagnetic method	85
2.12 A seismic flowmeter for mountain torrents	90
Further reading	93

3	Measurement of stage	95
3.1	<i>General</i>	95
3.2	<i>The reference gauge</i>	95
3.3	<i>Water level recorders</i>	105
3.4	<i>Optical shaft encoders</i>	126
3.5	<i>Solid-state recorders (loggers)</i>	129
3.6	<i>Stilling wells and intakes</i>	132
3.7	<i>Instrument house</i>	142
3.8	<i>Telemetry systems</i>	144
	<i>Further reading</i>	154
4	The stage–discharge relation	156
4.1	<i>General</i>	156
4.2	<i>The station control</i>	157
4.3	<i>The simple stage–discharge curve</i>	163
4.4	<i>The logarithmic method</i>	165
4.5	<i>Examples of logarithmic stage–discharge curves</i>	179
4.6	<i>Rating table</i>	186
4.7	<i>Sensitivity</i>	186
4.8	<i>Semi-logarithmic graph paper</i>	191
4.9	<i>Polynomial curve fitting</i>	195
	<i>Further reading</i>	195
5	Special problems in streamflow measurement	197
5.1	<i>Depth corrections for sounding line and weight</i>	197
5.2	<i>Oblique flow</i>	202
5.3	<i>Stilling well lag and draw-down</i>	204
5.4	<i>Rapidly changing discharge</i>	210
5.5	<i>Shifting control</i>	213
5.6	<i>Extrapolation of rating curves</i>	220
5.7	<i>Overflow</i>	223
5.8	<i>Current meter measurements from ice cover</i>	224
5.9	<i>Streamflow in arid regions</i>	228
5.10	<i>Non-standard indirect methods for measuring discharge and peak flow</i>	230
5.11	<i>Safety measures in streamflow measurement</i>	241
	<i>Further reading</i>	241

- 6.1 *General* 244
- 6.2 *Depth cells* 244
- 6.3 *ADCP moving boat method* 245
- 6.4 *Bottom tracking – determining boat velocity, depth and distance travelled* 248
- 6.5 *Measurement of discharge* 249
- 6.6 *Equipment* 250
- 6.7 *Making an ADCP measurement* 250
- 6.8 *Calibration* 250
- 6.9 *Methods of deployment and mountings* 252
- 6.10 *Stationary operation* 253
- 6.11 *Number of transects for discharge measurements* 253
- 6.12 *Size and frequency* 253
- 6.13 *Small rivers with shallow depths* 255
- 6.14 *Moving bed conditions* 255
- 6.15 *Moving bed test* 259
- 6.16 *Interference under external magnetic field conditions* 261
- 6.17 *Interference from boundaries and reflection of side lobes* 261
- 6.18 *Site selection* 263
- 6.19 *Training* 264
- 6.20 *Advantages of the ADCP over velocity–area methods* 264
- 6.21 *Uncertainties* 264
- Further reading* 266

7 Measurement by floats

- 7.1 *General* 268
- 7.2 *Cross-sections* 268
- 7.3 *Floats* 269
- 7.4 *Placing of floats* 270
- 7.5 *Position fixing* 270
- 7.6 *Determination of mean velocity* 272
- 7.7 *Computation of discharge* 273
- 7.8 *Example* 274
- 7.9 *The rising air float technique* 281
- 7.10 *Float gauging using aircraft* 284
- Further reading* 286

8	The slope-area method of streamflow measurement	287
8.1	<i>General</i>	287
8.2	<i>Chezy and Manning equations</i>	287
8.3	<i>The energy equation</i>	288
8.4	<i>Calculation of velocity head</i>	289
8.5	<i>Estimation of Manning's n and Chezy's C</i>	290
8.6	<i>Calculation of discharge</i>	290
8.7	<i>Selection of reach</i>	295
	<i>Further reading</i>	299
9	The stage-fall-discharge method of streamflow measurement	301
9.1	<i>General</i>	301
	<i>Further reading</i>	309
10	Weirs and flumes	310
10.1	<i>General</i>	310
10.2	<i>Principles and theory</i>	313
10.3	<i>Measurement of head</i>	318
10.4	<i>Check calibration in the field</i>	321
10.5	<i>Types of measuring structure</i>	322
10.6	<i>Non-modular (drowned) flow</i>	372
10.7	<i>Summary of the range of discharge for standard weirs and flumes</i>	375
10.8	<i>Summary of uncertainties in the coefficients of discharge</i>	375
10.9	<i>Non-standard weirs</i>	375
10.10	<i>Orifices and sluices</i>	381
	<i>Further reading</i>	389
11	Dilution gauging	391
11.1	<i>General</i>	391
11.2	<i>Principle</i>	391
11.3	<i>Tracers</i>	399
11.4	<i>Selection of measuring reach</i>	402
11.5	<i>Procedure</i>	405
11.6	<i>Comparison between the two dilution methods</i>	416
	<i>Further reading</i>	420

12	The ultrasonic method of streamflow measurement	421
12.1	<i>General</i>	421
12.2	<i>Principle</i>	421
12.3	<i>Theory</i>	423
12.4	<i>Site selection</i>	426
12.5	<i>Operating frequency</i>	428
12.6	<i>Minimum depth requirement</i>	428
12.7	<i>Crossed paths</i>	429
12.8	<i>Depth measurement</i>	434
12.9	<i>Reflector system</i>	434
12.10	<i>Responder system</i>	435
12.11	<i>System design</i>	436
12.12	<i>Advantages limitations and accuracy</i>	438
	<i>Further reading</i>	442
13	Accuracy	443
13.1	<i>Introduction</i>	443
13.2	<i>Standard deviation</i>	444
13.3	<i>Standard error of the mean relation</i>	447
13.4	<i>Nature of errors</i>	451
13.5	<i>Theory of errors</i>	452
13.6	<i>The error equation</i>	454
13.7	<i>Weirs and flumes</i>	458
13.8	<i>Values of uncertainties</i>	462
13.9	<i>The uncertainty in the stage–discharge relation</i>	465
13.10	<i>Uncertainties in individual methods</i>	472
	<i>Further reading</i>	473
14	Hydrometric data processing	475
14.1	<i>Introduction</i>	475
14.2	<i>Hydrometric data processing</i>	476
14.3	<i>Quality assurance of river flow data</i>	477
14.4	<i>Retrieval and dissemination of river flow data</i>	481
	<i>Further reading</i>	485

15	Flow in pipes	486
15.1	<i>Closed conduits flowmeters</i>	486
15.2	<i>Discharge through unmetered pipes</i>	493
	<i>Further reading</i>	499
	<i>Appendix</i>	500
	<i>Index</i>	503