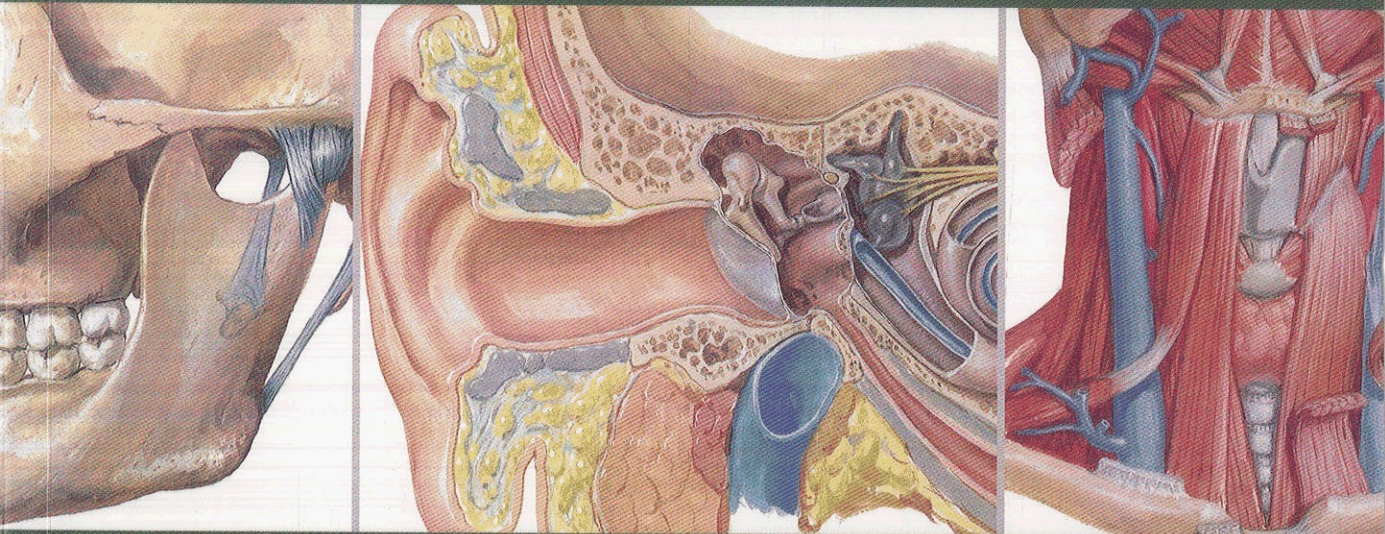


Netter's  
ATLAS *of*  
ANATOMY  
*for* SPEECH,  
SWALLOWING,  
*and* HEARING



DAVID H. McFARLAND

*F. Netter*  
M.D.

MOSBY  
ELSEVIER

**evolve**  
learning system

# CONTENTS

---

## **Introduction, 1**

---

### **ANATOMY, 2**

- Systemic Anatomy, 2
- Regional Anatomy, 2
- Developmental Anatomy, 2
- Functional Anatomy, 2
- Clinical Anatomy, 2

### **NOMENCLATURE, 3**

- Anatomical Position, 3

### **PLANES AND SECTIONS, 4**

- Sagittal, 4
- Frontal or Coronal, 4
- Transverse or Horizontal, 4

### **ANATOMICAL TERMS, 6**

- Superior and Inferior, 6
- Anterior and Posterior, 6
- Medial, Lateral, and Median, 6
- Proximal and Distal, 10
- External, Internal, and Intermediate, 10
- Parietal and Visceral, 10
- Prone and Supine, 10
- Ipsilateral, Contralateral, and Bilateral, 10

### **VIEWS AND ASPECTS, 10**

### **ANATOMICAL MOVEMENT, 12**

- Flexion and Extension, 12
- Abduction and Adduction, 12
- Elevation and Depression, 12
- Protrusion and Retrusion, 12
- Supination and Pronation, 12

### **VOCABULARY SPECIFIC TO ANATOMY, 13**

### **PRIMARY TISSUES, 14**

- Epithelial Tissue (Epithelium, Epithelia), 14
- Connective Tissue, 14
- Muscular Tissue, 16
- Nervous Tissue, 16

### **TERMS RELATIVE TO BONES, 17**

- Depressions, 17
- Elevations, 20

## **PART 1: Respiratory System, 23**

---

### **OVERVIEW, 25**

### **SKELETAL SUPPORT FOR RESPIRATION, 26**

- Vertebral Column, 26
- Rib Cage (Ribs, Cartilages, Sternum), 30

- Pectoral, Scapular, or Shoulder Girdle, 30
- Pelvic Girdle or Bony Pelvis, 32

### **RESPIRATORY TRACT, 34**

- Nasal Cavities, 34
- Oral Cavity, 34
- Pharynx, 34
- Larynx, 34
- Trachea, 38
- Bronchi, 38
- Lungs, 42
- Pleura, 46

### **RESPIRATORY MUSCLES, 48**

- Principal Muscles of Inspiration, 49
- Accessory Muscles of Inspiration, 56
- Muscles of Expiration, 58

### **RESPIRATORY VOLUMES AND**

#### **CAPACITIES, 70**

- Volumes, 70
- Capacities, 70
- Other Functional Measures, 70

## **PART 2: Phonatory System, 73**

---

### **OVERVIEW, 75**

### **LARYNX, 76**

### **CARTILAGES OF THE LARYNX, 78**

- Thyroid Cartilage, 78
- Cricoid Cartilage, 78
- Arytenoid Cartilages, 78
- Corniculate, or Santorini's, Cartilages, 80
- Cuneiform Cartilages, 80
- Triticeal (Tritiate) Cartilages, 80
- Epiglottis, 80

### **HYOID BONE, 81**

### **TYPES OF JOINTS, 81**

### **LIGAMENTS AND MEMBRANES, 82**

- Extrinsic Ligaments and Membranes, 82
- Intrinsic Ligaments and Membranes, 83

### **VOCAL FOLDS, 84**

- Tissue Layers of the Vocal Folds, 88
- Visual Representation of the Classifications of Vocal Fold Layers, 89

### **MUSCLES OF THE LARYNX, 90**

- Intrinsic Muscles of the Larynx, 90
- Extrinsic Muscles of the Larynx, 94

## **PART 3: Articulatory System, 105**

### **OVERVIEW, 107**

#### **CRANIAL ANATOMY, 108**

- Cranium, 108
- Facial Skeleton, 112
- Sinuses, 116

#### **VOCAL TRACT, 117**

- Pharyngeal Cavity, 117
- Nasal Cavities, 120
- Oral Cavity, 122
- Tonsils, 124
- Palate, 124
- Tongue, 124
- Salivary Glands, 126
- Lips, 126
- Teeth, 128

#### **MUSCLES OF THE LIPS AND FACIAL EXPRESSION, 132**

- Orbicularis Oris Muscle, 132
- Two Transverse Muscles, 132
- Five Angular Muscles, 134
- Three Vertical Muscles, 136

#### **ONE MUSCLE OF THE NECK, 137**

- Platysma Muscle, 137

#### **MUSCLES OF THE TONGUE, 138**

- Intrinsic Muscles of the Tongue, 138
- Extrinsic Muscles of the Tongue, 140

#### **MUSCLES OF MASTICATION, 142**

- Temporomandibular Joint, 142
- Three Jaw Closing Muscles (Jaw Elevators), 144
- Four Jaw Opening Muscles (Jaw Depressors), 146

#### **MUSCLES OF THE SOFT PALATE, 150**

- Levator Veli Palatini Muscle, 150
- Tensor Veli Palatini Muscle, 150
- Palatoglossus (Glossopalatine) Muscle, 152
- Palatopharyngeus Muscle, 152
- Uvular Muscle (Musculus Uvulae), 152

#### **MUSCLES OF THE PHARYNX, 153**

- Superior Pharyngeal Constrictor Muscle, 153
- Middle Pharyngeal Constrictor Muscle, 153
- Inferior Pharyngeal Constrictor Muscle, 153
- Salpingopharyngeus Muscle, 155
- Stylopharyngeus Muscle, 155
- Velopharyngeal Mechanism, 155

#### **ESOPHAGUS, 158**

- Upper Esophageal, or Inferior Pharyngeal, Sphincter, 158
- Primary Esophageal Peristalsis, 158
- Lower Esophageal Sphincter, 158

## **PART 4: Auditory System, 169**

### **OVERVIEW, 171**

#### **ANATOMICAL DIVISIONS OF THE EAR, 172**

Outer Ear, 174

Middle Ear, 178

Inner Ear and Vestibular System, 184

Scala Media, or Cochlear Duct, 190

#### **COCHLEAR AFFERENT AND EFFERENT INNERVATION, 194**

Afferent Innervation, 194

Afferent Central Auditory Pathway, 195

Efferent Central Auditory Pathway (Auditory Centrifugal Pathway), 198

## **PART 5: Nervous System, 199**

### **OVERVIEW, 201**

#### **NEUROANATOMICAL TERMS OF DIRECTION, 202**

#### **TELENCEPHALON (CEREBRAL HEMISPHERES OR CEREBRUM AND BASAL GANGLIA), 203**

Surface Structures, 203

Internal Structures of the Cerebral Hemispheres, 210

Basal Ganglia, 210

#### **DIENCEPHALON (THALAMUS, HYPOTHALAMUS, EPITHALAMUS, AND SUBTHALAMUS), 212**

Characteristic Features, 212

Importance for Speech and Swallowing, 212

#### **MESENCEPHALON (MIDBRAIN), 213**

Characteristic Features, 213

Importance for Speech and Swallowing, 213

#### **METENCEPHALON (PONS AND CEREBELLUM), 214**

Characteristic Features, 214

Importance for Speech and Swallowing, 214

#### **MYELENCEPHALON (MEDULLA OBLONGATA), 214**

Characteristic Features, 214

Importance for Speech and Swallowing, 214

Brainstem Pattern-Generating Circuitry, 214

#### **SPINAL CORD, 216**

Characteristic Features, 216

Internal Structures, 216

#### **CEREBELLUM, 218**

Characteristic Features, 218

Importance for Speech and Swallowing, 219

#### **MENINGES, 222**

Dura Mater, 222

Arachnoid Mater, 222

Pia Mater, 222

#### **CEREBROSPINAL FLUID, 224**

#### **CEREBRAL VASCULATURE, 227**

#### **CRANIAL NERVES, 232**

Types of Cranial Nerve Fibers, 234

I Olfactory (Sensory), 236

II Optic (Sensory), 236

III Oculomotor (Motor), 237  
IV Trochlear (Motor), 237  
V Trigeminal (Motor and Sensory), 238  
VI Abducens (Motor), 240  
VII Facial (Motor and Sensory), 240  
VIII Vestibulocochlear (Sensory), 242  
IX Glossopharyngeal (Motor and Sensory),  
244

X Vagus, or Pneumogastric, Nerve (Motor  
and Sensory), 246  
XI Accessory (Motor), 248  
XII Hypoglossal (Motor), 250

**Index, 253**

---