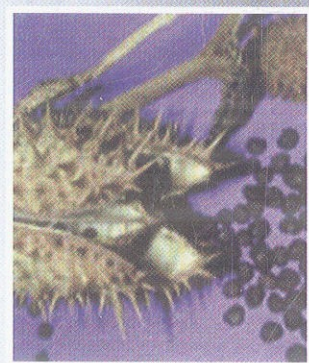
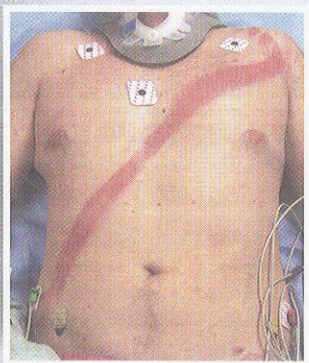
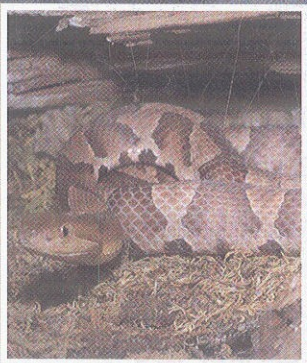


The Atlas of Emergency

THIRD EDITION

Medicine



Kevin J. Knoop · Lawrence B. Stack · Alan B. Storrow · R. Jason Thurman



Contributors / xvii
Photography Credits / xxi
Foreword / xxxiii
Preface / xxxv

Chapter 1 HEAD AND FACIAL TRAUMA 3

David W. Munter · Timothy D. McGuirk

BASILAR SKULL FRACTURE	4
DEPRESSED SKULL FRACTURE	7
NASAL INJURIES	8
FRACTURES OF THE ZYGOMA	10
LEFORT FACIAL FRACTURES	11
ORBITAL FLOOR FRACTURE	12
MANDIBULAR FRACTURES	14
EXTERNAL EAR INJURIES	16
FRONTAL SINUS FRACTURE	18
TRAUMATIC EXOPHTHALMOS	20
PENETRATING FACIAL TRAUMA	22
UNCAL HERNIATION SYNDROME	23

Chapter 2 OPHTHALMOLOGIC CONDITIONS 25

Marc E. Levsky · Paul DeFlorio

NEONATAL CONJUNCTIVITIS (OPHTHALMIA NEONATORUM)	26
BACTERIAL CONJUNCTIVITIS	28
VIRAL CONJUNCTIVITIS	29
EPIDEMIC KERATOCONJUNCTIVITIS	30
ALLERGIC CONJUNCTIVITIS	32
DACRYOCYSTITIS	33
DACRYOADENITIS	34
PINGUECULA/PTERYGIUM	35
HORDEOLUM/CHALAZION	36
SCLERITIS	38
EPISCLERITIS	39
ACUTE ANGLE CLOSURE GLAUCOMA	40
ANTERIOR UVEITIS (IRITIS)	42
ANISOCORIA	44
HERPES ZOSTER OPHTHALMICUS	45
OCULAR HERPES SIMPLEX	46

CORNEAL ULCER	48
AFFERENT PUPILLARY DEFECT (MARCUS GUNN PUPIL)	50
HORNER SYNDROME	52
SIXTH-NERVE PALSY	53
THIRD-NERVE PALSY	54

Chapter 3 FUNDUSCOPIC FINDINGS 57

David Efron · Beverly C. Forcier · Richard E. Wyszynski

NORMAL FUNDUS	58
AGE-RELATED MACULAR DEGENERATION	59
EXUDATE	60
ROTH SPOTS	61
EMBOLI	62
CENTRAL RETINAL ARTERY OCCLUSION	63
CENTRAL RETINAL VEIN OCCLUSION	64
HYPERTENSIVE RETINOPATHY	65
DIABETIC RETINOPATHY	66
VITREOUS HEMORRHAGE	68
RETINAL DETACHMENT	69
CYTOMEGALOVIRUS RETINITIS	70
PAPILLEDEMA	71
OPTIC NEURITIS	72
ANTERIOR ISCHEMIC OPTIC NEUROPATHY	73
GLAUCOMA	74
SUBHYALOID HEMORRHAGE IN SUBARACHNOID HEMORRHAGE	75

Chapter 4 OPHTHALMIC TRAUMA 77

Dallas E. Peak · Christopher S. Weaver · Kevin J. Knoop

CORNEAL ABRASION	78
SUBCONJUNCTIVAL HEMORRHAGE	80
CORNEAL FOREIGN BODY	81
HYPHEMA	82
INTRAOCULAR FOREIGN BODY	84
IRIDODIALYSIS	85
LENS DISLOCATION	86
PENETRATING GLOBE INJURY	88
GLOBE RUPTURE	90
TRAUMATIC CATARACT	91
EYELID LACERATION	92
CHEMICAL EXPOSURE	94

Chapter 5 EAR, NOSE, AND THROAT CONDITIONS

95

Edward C. Jauch Sean P. Barbabella
Francisco J. Fernandez Kevin J. Knoop

OTITIS MEDIA	96
BULLOUS MYRINGITIS	100
CHOLESTEATOMA AND OSTEOOMA	101
TYMPANIC MEMBRANE PERFORATION	103
OTITIS EXTERNA	104
MASTOIDITIS	105
AURICULAR PERICHONDRITIS	106
HERPES ZOSTER OTICUS (RAMSAY HUNT SYNDROME)	108
FACIAL NERVE PALSY	110
ANGIOEDEMA	112
PHARYNGITIS	114
SEPTAL HEMATOMA	116
DIPHTHERIA	117
PERITONSILLAR ABSCESS	118
EPIGLOTTITIS	120
LIVULITIS	122
MUCOCELE (RANULA)	123
SIALOADENITIS	124
SINUSITIS	126
NASAL CELLULITIS	128

Chapter 6

MOUTH

129

Edward C. Jauch Brent E. Gottesman

Oral Trauma	130
TOOTH SUBLUXATION	130
TOOTH IMPACTION (INTRUSIVE LUXATION)	131
TOOTH AVULSION	132
TOOTH FRACTURES	133
ALVEOLAR RIDGE FRACTURE	135
TEMPORAL MANDIBULAR JOINT DISLOCATION	136
TONGUE LACERATION	138
VERMILION BORDER LIP LACERATION	139
Odontogenic Infections	140
GINGIVAL ABSCESS (PERIODONTAL ABSCESS)	140
PERIAPICAL ABSCESS	141
PERICORONAL ABSCESS	143
BUCCAL SPACE ABSCESS	144

CANINE SPACE ABSCESS	145
LUDWIG ANGINA	146
PARAPHARYNGEAL SPACE ABSCESS	147

Oral Conditions 148

TRENCH MOUTH (ACUTE NECROTIZING ULCERATIVE GINGIVITIS)	148
ACID TOOTH EROSION (BULIMIA)	149
THRUSH (ORAL CANDIDIASIS)	150
ORAL HERPES SIMPLEX VIRUS (COLD SORES)	151
APHTHOUS ULCERS (CANKER SORES)	152
STRAWBERRY TONGUE	153
TORUS PALATINUS	154
BLACK HAIRY TONGUE	155
ORAL CAVITY PIERCING COMPLICATIONS	156

Chapter 7

CHEST AND ABDOMEN 157

Stephen W. Corbett Lawrence B. Stack Kevin J. Knoop

Chest and Abdominal Trauma	158
TRAUMATIC ASPHYXIA	158
FLAIL CHEST	159
STERNOCLAVICULAR DISLOCATION	160
TENSION PNEUMOTHORAX WITH NEEDLE THORACENTESIS	161
CARDIAC TAMPONADE WITH PERICARDIOCENTESIS	162
EMERGENCY DEPARTMENT THORACOTOMY	163
DIAGNOSTIC PERITONEAL LAVAGE	164
SEAT BELT INJURY	165
GREY TURNER SIGN AND CULLEN SIGN	166
IMPALED FOREIGN BODY	167
ABDOMINAL EVISCERATION	168
TRAUMATIC ABDOMINAL HERNIA	170
PELVIC FRACTURE	171
Nontraumatic Chest and Abdominal Conditions	172
RESPIRATORY RETRACTIONS	172
SUPERIOR VENA CAVA SYNDROME	173
SITUS INVERSUS	174
APICAL LUNG MASS	175
JUGULOVENOUS DISTENSION	176
CAPUT MEDUSAE	177
ABDOMINAL HERNIAS	178
UMBILICAL HERNIA	180

PATENT URACHAL DUCT	181	CONDYLOMA ACUMINATA (GENITAL WARTS)	220
SISTER MARY JOSEPH NODE (NODULAR UMBILICUS)	182	PEDICULOSIS	222
ABDOMINAL DISTENSION	183	ANAL FISSURE	223
ABDOMINAL WALL HEMATOMA	185	PERIANAL-PERIRECTAL ABSCESES	224
PECTUS EXCAVATUM	186	INTERNAL-EXTERNAL HEMORRHOIDS	226
STOMA PROLAPSE	187	PROLAPSED RECTUM	228
		PILONIDAL ABSCESS	229
		RECTAL FOREIGN BODY	230
		MELENA	231

Chapter 8

UROLOGIC CONDITIONS 189

Jeffery D. Bondesson

TESTICULAR TORSION	190
TORSION OF A TESTICULAR OR EPIDIDYMAL APPENDIX	192
ACUTE EPIDIDYMITIS	193
ORCHITIS	194
HYDROCELE	195
TESTICULAR TUMOR	196
SCROTAL ABSCESS	197
FOURNIER GANGRENE	198
PARAPHIMOSIS	200
PRIAPISM	201
URETHRAL RUPTURE	202
FRACTURE OF THE PENIS	203
PENILE HAIR TOURNIQUET	204
STRADDLE INJURY	205
BALANOPOSTHITIS	206
PENILE ZIPPER INJURY	208

Chapter 9

SEXUALLY TRANSMITTED INFECTIONS AND ANORECTAL CONDITIONS 209

Diane M. Birnbaumer • Lynn K. Flowers

Sexually Transmitted Infections	210
PRIMARY SYPHILIS	210
SECONDARY SYPHILIS	211
GONORRHEA	213
CHLAMYDIAL INFECTION	215
GENITAL HERPES	216
LYMPHOGRANULOMA VENEREUM	218
CHANCROID	219

Chapter 10

GYNECOLOGIC AND OBSTETRIC CONDITIONS 233

Robert G. Buckley • Kevin J. Knoop

Gynecologic Conditions	234
VAGINITIS	234
MUCOPURULENT CERVICITIS	236
CERVICAL POLYPS	237
BARTHOLIN GLAND ABSCESS	238
SPONTANEOUS ABORTION	239
GENITAL TRAUMA AND SEXUAL ASSAULT	240
UTERINE PROLAPSE	242
CYSTOCELE	243
RECTOCELE	244
IMPERFORATE HYMEN	245
ECTOPIC PREGNANCY:	
ULTRASONOGRAPHIC IMAGING	246
MOLAR PREGNANCY (HYDATIDIFORM MOLE)	248
Obstetric Conditions	249
THIRD-TRIMESTER BLUNT ABDOMINAL TRAUMA	249
EMERGENCY DELIVERY: IMMINENT VERTEX DELIVERY—CROWNING	251
EMERGENCY DELIVERY: NORMAL DELIVERY SEQUENCE	252
BREECH DELIVERY	255
UMBILICAL CORD PROLAPSE IN EMERGENCY DELIVERY	256
NUCHAL CORD IN EMERGENCY DELIVERY	258
SHOULDER DYSTOCIA IN EMERGENCY DELIVERY	259
POSTPARTUM PERINEAL LACERATIONS	260
INTRAUTERINE FETAL DEMISE	262

Chapter 11

EXTREMITY TRAUMA 263

Neha P. Raukar George J. Raukar Daniel L. Savitt

ACROMIOCLAVICULAR JOINT SEPARATION	264
SHOULDER DISLOCATION	266
ELBOW FRACTURES	268
ELBOW DISLOCATION	270
BICEPS TENDON RUPTURE	271
FOREARM FRACTURES	272
FRACTURES OF THE DISTAL RADIUS	274
CARPAL AND CARPOMETACARPAL DISLOCATIONS	276
CLENCHED FIST INJURY (FIGHT BITE)	279
BOXER'S FRACTURE	280
PERIPHERAL NERVE INJURY	281
BENNETT AND ROLANDO FRACTURES	282
BOUTONNIÈRE AND SWAN-NECK DEFORMITIES	284
HIGH-PRESSURE INJECTION INJURY	286
GAMEKEEPER'S THUMB (SKIER'S THUMB)	287
PHALANGEAL DISLOCATIONS	288
MALLET FINGER AND JERSEY FINGER	290
COMPARTMENT SYNDROME	292
SUBLINGUAL HEMATOMA	294
HIP DISLOCATIONS	295
HIP FRACTURE	296
KNEE EXTENSOR INJURIES	298
PATELLAR DISLOCATIONS	300
KNEE DISLOCATION	301
FEMUR FRACTURE	302
TIBIAL-FIBULAR FRACTURES	303
FRACTURE BLISTERS	304
ACHILLES TENDON RUPTURE	305
ANKLE DISLOCATION	306
CALCANEUS FRACTURE	308
ANKLE SPRAIN	309
FRACTURES OF THE FIFTH METATARSAL BASE	310
LISFRANC FRACTURE-DISLOCATION	312
AMPUTATIONS	314

Chapter 12

EXTREMITY CONDITIONS 317

Robert J. Tubbs Daniel L. Savitt Selim Suner

CELLULITIS	318
FELON	319

GANGRENE	320
GAS GANGRENE (MYONECROSIS)	321
NECROTIZING FASCIITIS	322
CRYSTAL-INDUCED SYNOVITIS (GOUT AND PSEUDOGOUT)	323
INGROWN TOENAIL (ONYCHOCRYPTOSIS)	324
LYMPHANGITIS	325
LYMPHEDEMA	326
OLECRANON AND PREPATELLAR BURSITIS	327
PALMAR SPACE INFECTION	328
TENOSYNOVITIS	329
THROMBOPHLEBITIS	330
PARONYCHIA	331
SUBCLAVIAN VEIN THROMBOSIS	332
CERVICAL RADICULOPATHY	333
DIGITAL CLUBBING	334
PHLEGMASIA DOLENS	335
DEEP VENOUS THROMBOSIS	336
DUPUYTREN CONTRACTURE	338
ACHILLES TENDONITIS	339
GANGLION (SYNOVIAL) CYST	340
RAYNAUD DISEASE	341
ARTERIAL EMBOLUS	342

Chapter 13

CUTANEOUS CONDITIONS 343

J. Matthew Hardin

STEVENS-JOHNSON SYNDROME/TOXIC EPIDERMAL NECROLYSIS	344
ERYTHEMA MULTIFORME	346
FIXED DRUG ERUPTION	347
DRUG ERUPTIONS	348
HIDRADENITIS SUPPURATIVA	349
PYOGENIC GRANULOMA	350
PYODERMA GANGRENOSUM	351
SEBORRHEIC DERMATITIS	352
PSORIASIS	353
NUMMULAR ECZEMA/XEROTIC ECZEMA	354
DYSHYDROTIC ECZEMA	355
ID REACTION	356
ATOPIC DERMATITIS	357
STASIS DERMATITIS	358

ACNE VULGARIS	359
VASCULITIS (LEUKOCYTOCLASTIC VASCULITIS)	360
IDIOPATHIC THROMBOCYTOPENIC PURPURA	362
THROMBOTIC THROMBOCYTOPENIC PURPURA	363
PITYRIASIS ROSEA	364
LIVEDO RETICULARIS	365
URTICARIA, DERMATOGRAPHISM, AND ANGIOEDEMA	366
ALLERGIC CONTACT DERMATITIS	368
PHYTOPHOTODERMATITIS AND PHOTOTOXIC DRUG REACTIONS	369
ERYTHEMA NODOSUM	370
ERYTHEMA CHRONICUM MIGRANS	371
ROCKY MOUNTAIN SPOTTED FEVER	372
DISSEMINATED GONOCOCCUS	373
INFECTIVE ENDOCARDITIS	374
ERYSIPELAS	376
HOT TUB FOLLICULITIS	377
ECTHYMA GANGRENOSUM	378
SECONDARY SYPHILIS	379
DISSECTING CELLULITIS OF THE SCALP	380
SQUAMOUS CELL CARCINOMA	381
BASAL CELL CARCINOMA	382
MELANOMA	383
HERPES ZOSTER	384
NONGENITAL HERPES SIMPLEX INFECTIONS	385
AUTOIMMUNE BULLOUS DISEASES	386
SWEET SYNDROME	387
DERMATOPHYTE INFECTIONS	388
TINEA (PITYRIASIS) VERSICOLOR	390
ONYCHOMYCOSIS	391
VITILIGO	392
SCABIES AND NORWEGIAN SCABIES	393
UREMIC FROST	394
BACILLUS ANTHRACIS (ANTHRAX)	395
INTERTRIGO	396
ABDOMINAL STRIAE (STRIAE ATROPHICAE)	397
MELASMA	398
JAUNDICE	399
ALOPECIA	400
SYSTEMIC LUPUS ERYTHEMATOSUS	401
PORPHYRIA CUTANEA TARDA	402

Downloaded from <http://www.cambridge.org/core>.
 University of California, San Diego, on 02 Jun 2018 at 12:52:00, subject to the Cambridge Core terms of use, available at <http://www.cambridge.org/core/terms>.
<https://doi.org/10.1017/9781107307423.003>

Chapter 13

PEDIATRIC CONDITIONS 405

Matthew R. Mittiga Javier A. Gonzalez del Rey
 Richard M. Ruddy

Newborn Conditions	406
ERYTHEMA TOXICUM NEONATORUM	406
SALMON PATCHES (NEVUS SIMPLEX)	407
NEONATAL JAUNDICE	408
NEONATAL MILK PRODUCTION (WITCH'S MILK)	409
NEONATAL MASTITIS	410
UMBILICAL GRANULOMA	411
HYPERTROPHIC PYLORIC STENOSIS	412
Rashes and Lesions	414
ERYTHEMA INFECTIOSUM (FIFTH DISEASE)	414
ROSEOLA INFANTUM (EXANTHEM SUBITUM)	415
IMPETIGO	416
MEASLES	417
VARICELLA (CHICKENPOX)	418
HERPES ZOSTER	419
HAND, FOOT, AND MOUTH DISEASE	420
COLD PANNICULITIS (POPSICLE PANNICULITIS)	421
HERPETIC GINGIVOSTOMATITIS	422
MENINGOCOCCEMIA	423
URTICARIA	424
STAPHYLOCOCCAL SCALDED SKIN SYNDROME	425
SCARLET FEVER	426
BLISTERING DISTAL DACTYLITIS	428
HENOCH-SCHÖNLEIN PURPURA	429
STRAWBERRY HEMANGIOMA	430
ORBITAL AND PERIORBITAL (PRESEPTAL) CELLULITIS	431
BRANCHIAL CLEFT CYST	432
THYROGLOSSAL DUCT CYST	434
CYSTIC HYGROMA (LYMPHANGIOMAS)	435
CAT-SCRATCH DISEASE	436
General Conditions	437
EPIGLOTTITIS	437
RETROPHARYNGEAL ABSCESS	438
BUTTON BATTERY INGESTION	440
MEMBRANOUS (BACTERIAL) TRACHEITIS	441

PHYSEAL FRACTURES: SALTER-HARRIS		IMMERSION INJURY (TRENCH FOOT)	495
CLASSIFICATION	442	ULTRAVIOLET RADIATION EXPOSURE	496
ACUTE SICKLE DACTYLITIS (HAND-FOOT SYNDROME)	444	LIGHTNING INJURIES	498
HAIR TOURNIQUET	445	LARGE TERRESTRIAL ANIMAL ATTACKS	500
FAILURE TO THRIVE	446	CORAL SNAKE ENVENOMATION	501
NURSING BOTTLE CARIES	447	PIT VIPER ENVENOMATION	502
NURSEMAID'S ELBOW (RADIAL HEAD SUBLUXATION)	448	BLACK WIDOW SPIDER ENVENOMATION	505
INGUINAL HERNIA	450	BROWN RECLUSE SPIDER ENVENOMATION	506
PINWORM INFECTION (ENTEROBIASIS)	452	SCORPION ENVENOMATION	508
OCULOGYRIC CRISIS	453	TICKS	510
KAWASAKI DISEASE	454	HYMENOPTERA ENVENOMATION	512

Chapter 15

CHILD ABUSE 457

Robert A. Shapiro • Charles J. Schubert
• Kathi L. Makoroff • Megan L. McGraw

Physical Abuse 458

INFLECTED BURNS	458
INFLECTED BRUISES AND SOFT-TISSUE INJURIES	460
LESIONS MISTAKEN FOR PHYSICAL ABUSE	464
FRACTURES SUGGESTIVE OF PHYSICAL ABUSE	466
INFLECTED HEAD INJURY (SHAKEN BABY SYNDROME)	468

Sexual Abuse 470

THE CHILD SEXUAL ABUSE EXAMINATION	470
INJURIES AND FINDINGS INDICATIVE OF PENETRATING GENITAL OR ANAL TRAUMA	476

Findings Mistaken for Sexual Abuse 480

STRADDLE INJURIES	480
LABIAL ADHESIONS	481
URETHRAL PROLAPSE	482
TOILET SEAT INJURIES	483
PERIANAL STREPTOCOCCAL INFECTION	484
LICHEN SCLEROSUS ATROPHICUS	485

Chapter 16

ENVIRONMENTAL CONDITIONS 487

Ken Zafren • R. Jason Thurman • Ian D. Jones

HIGH-ALTITUDE RETINAL HEMORRHAGE	488
HIGH-ALTITUDE PULMONARY EDEMA	489
HIGH-ALTITUDE CEREBRAL EDEMA	490
HYPOTHERMIA	491
FROSTBITE	492
PERNIO	494

IMMERSION INJURY (TRENCH FOOT)	495
ULTRAVIOLET RADIATION EXPOSURE	496
LIGHTNING INJURIES	498
LARGE TERRESTRIAL ANIMAL ATTACKS	500
CORAL SNAKE ENVENOMATION	501
PIT VIPER ENVENOMATION	502
BLACK WIDOW SPIDER ENVENOMATION	505
BROWN RECLUSE SPIDER ENVENOMATION	506
SCORPION ENVENOMATION	508
TICKS	510
HYMENOPTERA ENVENOMATION	512
CATERPILLAR, MITE, AND CENTIPEDE ENVENOMATION	514
MIDDLE EAR SQUEEZE	516
MASK SQUEEZE	517
STINGRAY ENVENOMATION	518
SEA URCHIN ENVENOMATION	520
COELENTERATE ENVENOMATION	522
MARINE DERMATITIS	525
SCORPION FISH STING	526
SEA SNAKE ENVENOMATION	527
CEPHALOPOD ENVENOMATION	528
ERYSIPELOID	529
TOXICODENDRON EXPOSURE	530
SPOROTRICHOSIS	532

Chapter 17

TOXICOLOGICAL CONDITIONS 533

Saralyn R. Williams • Matthew D. Sztajnkrzyer
• R. Jason Thurman

METHAMPHETAMINE TOXICITY	534
COCAINE TOXICITY	536
ANTICHOLINERGIC (ANTIMUSCARINIC) TOXIDROME	539
HEROIN AND OPIOID TOXICITY	540
TRICYCLIC ANTIDEPRESSANT POISONING	542
POISONING BY β -BLOCKER AND CALCIUM CHANNEL BLOCKER AGENTS	544
SALICYLATE POISONING	546
ACETAMINOPHEN POISONING	548
CAUSTIC INGESTION	549
TOXIC ALCOHOL INGESTION	550
CELLULAR ASPHYXIANTS	552
METHEMOGLOBINEMIA	554
INHALANT ABUSE	556
HYDROFLUORIC ACID BURNS	558

BOTULISM	560
ARSENIC POISONING	562
MERCURY POISONING	564
LEAD POISONING	566
IRON INGESTION	568
AMATOXIN INGESTION	569
CARDIAC GLYCOSIDE PLANT INGESTION	570
DIEFFENBACHIA INGESTION	572
JIMSONWEED INGESTION	573
PEYOTE INGESTION	574
TOXALBUMIN INGESTION	575
VANCOMYCIN-INDUCED RED MAN SYNDROME	576

Chapter 18

WOUNDS AND SOFT TISSUE

INJURIES 577

Chan W. Park Michael L. Juliano Dana Woodhall

WOUND CLEANING AND IRRIGATION	578
WOUND ASSESSMENT	580
WOUND FOREIGN BODIES	582
TRAUMATIC WOUNDS	584
EAR LACERATIONS	588
LIP LACERATIONS	589
TENDON LACERATIONS	590
ANIMAL BITE WOUNDS	592
FISHHOOK INJURIES	594
SIMPLE WOUND CLOSURES	596
COMPLEX WOUND CLOSURES	600
WOUND CARE COMPLICATIONS	604
BURNS	606
DECUBITUS ULCERS	608
ELECTRICAL INJURY	609

Chapter 19

FORENSIC MEDICINE 611

William S. Smock Lawrence B. Stack

GUNSHOT WOUNDS	612
Pattern Injuries of Domestic Violence, Assault, and Abuse	618
SHARP-FORCE-PATTERN INJURIES	618
BLUNT-FORCE-PATTERN INJURIES	620
THERMAL-PATTERN INJURIES	622

Chapter 20

HIV CONDITIONS 623

J. Michael Ballester Roderick Morrison

PRIMARY HIV INFECTION	624
ORAL HAIRY LEUKOPLAKIA	625
CANDIDIASIS ASSOCIATED WITH HIV	626
KAPOSI SARCOMA	628
TOXOPLASMA GONDII INFECTION	630
CRYPTOCOCCAL INFECTIONS	632
CYTOMEGALOVIRUS INFECTIONS	634
LEISHMANIASIS	635
HERPES ZOSTER IN HIV PATIENTS	636
EOSINOPHILIC FOLLICULITIS	638
HERPES SIMPLEX VIRUS IN HIV PATIENTS	639
SCABIES	640
MOLLUSCUM CONTAGIOSUM	642
DERMATOPHYTE (TINEA) INFECTIONS	643
PNEUMOCYSTIS	644
THROMBOCYTOPENIA	645
DRUG REACTIONS	646
ACUTE NECROTIZING ULCERATIVE GINGIVITIS	647

Chapter 21

TROPICAL MEDICINE 649

Seth W. Wright Meg Jack

FREE-LIVING AMEBA INFECTION	650
ANEMIA IN THE TROPICS	651
CHOLERA	652
ASCARIASIS	654
CUTANEOUS LARVA MIGRANS	655
CYSTICERCOSIS	656
DENGUE FEVER	658
ELEPHANTIASIS	660
EPIDEMIC MENINGITIS	662
GOITER	663
LEISHMANIASIS	664
HYDATID CYST	666
NONTUBERCULOSIS MYCOBACTERIA INFECTIONS	667
LEPROSY	668
MALARIA	670
MYCETOMA	672
MYIASIS	674

PROTEIN ENERGY MALNUTRITION— KWASHIORKOR AND MARASMUS	676
RABIES	678
TROPICAL SPOROTRICHOSIS	679
TUBERCULOSIS	680
TETANUS	683
TRACHOMA	684
TROPICAL SNAKE ENVENOMATIONS	685
TRADITIONAL MEDICINE IN THE TROPICS	686

Chapter 22

AIRWAY PROCEDURES 689

Steven J. White Richard M. Levitan
Lawrence B. Stack

AIRWAY MAXIM ONE	690
AIRWAY MAXIM TWO	692
AIRWAY MAXIM THREE	693
AIRWAY MAXIM FOUR	694
AIRWAY MAXIM FIVE	695
LARYNGOSCOPIC OROTRACHEAL INTUBATION	696
BOUGIE-ASSISTED INTUBATION	703
OPTICAL STYLET-ASSISTED INTUBATION	706
OPTICAL LARYNGOSCOPE-ASSISTED INTUBATION	708
LIGHTED STYLETS AND WANDS	710
GLIDESCOPE-ASSISTED INTUBATION	713
DIGITAL (TACTILE) INTUBATION	714
LARYNGEAL MASK AIRWAY	715
INTUBATING LARYNGEAL MASK AIRWAY	717
INTUBATING LARYNGEAL AIRWAY	718
ESOPHAGEAL-PHARYNGEAL COMBITUBE AIRWAY	720
BLIND NASOTRACHEAL INTUBATION	722
NASAL FLEXIBLE FIBEROPTIC INTUBATION	725
TRANSTRACHEAL JET VENTILATION	727
CRICOTHYROTOMY (SELDINGER TECHNIQUE)	729
OPEN CRICOTHYROTOMY	731

Chapter 23

ECG ABNORMALITIES 733

James V. Ritchie Michael L. Juliano R. Jason Thurman

Part 1: ST-T Abnormalities	734
ACUTE ANTERIOR MYOCARDIAL INFARCTION	734
ACUTE INFERIOR MYOCARDIAL INFARCTION	735

ACUTE RIGHT VENTRICULAR MYOCARDIAL INFARCTION	736
ACUTE POSTERIOR MYOCARDIAL INFARCTION	737
LEFT MAIN LESION	738
SGARBOSSA CRITERIA FOR AMI IN SETTING OF LBBB	739
SUBENDOCARDIAL ISCHEMIA	740
HYPERACUTE T WAVES	741
WELLENS WAVES	742
“CEREBRAL” T WAVES	743
EARLY REPOLARIZATION	744
LEFT VENTRICULAR ANEURYSM	745
PERICARDITIS	746

Part 2: Conduction Disturbances 747

FIRST-DEGREE AV BLOCK	747
TYPE 1 SECOND-DEGREE AV BLOCK (MOBITZ I, WENCKEBACH)	748
TYPE 2 SECOND-DEGREE AV BLOCK (MOBITZ II)	749
THIRD-DEGREE (COMPLETE) AV BLOCK	750
QT INTERVAL PROLONGATION	751
RIGHT BUNDLE BRANCH BLOCK	752
LEFT BUNDLE BRANCH BLOCK	753
LEFT ANTERIOR FASCICULAR BLOCK	754
LEFT POSTERIOR FASCICULAR BLOCK	755
ASHMAN PHENOMENON	756

Part 3: Rhythm Disturbances 757

JUNCTIONAL RHYTHM	757
VENTRICULAR RHYTHM	758
PACED RHYTHM	759
ATRIAL FIBRILLATION	760
ATRIAL FLUTTER	761
MULTIFOCAL ATRIAL TACHYCARDIA	762
SUPRAVENTRICULAR TACHYCARDIA (SVT)	763
SVT WITH ABERRANCY	764
VENTRICULAR TACHYCARDIA	765
VENTRICULAR FLUTTER	766
TORSADES DE POINTES	767

Part 4: Structural Abnormalities 768

DEXTRCARDIA	768
LEFT VENTRICULAR HYPERTROPHY	769
RIGHT VENTRICULAR HYPERTROPHY	770
LEFT ATRIAL HYPERTROPHY	771
RIGHT ATRIAL HYPERTROPHY	772
HYPERTROPHIC CARDIOMYOPATHY	773

BRUGADA SYNDROME	774	ECHO WINDOW 4: APICAL FOUR-CHAMBER VIEW (A4C)	804
WOLFF-PARKINSON-WHITE SYNDROME	775	ECHO WINDOW 5: SUBXIPHOID LONG-AXIS (IVC)	806
Part 5: ECG Abnormalities of Non-cardiac Origin	776	GALLBLADDER ULTRASOUND	808
HYPOTHERMIA	776	ABDOMINAL AORTA ULTRASOUND	812
HYPOKALEMIA	777	RENAL ULTRASOUND	815
HYPERKALEMIA	778	PELVIC ULTRASOUND	817
PULMONARY EMBOLISM	780	DEEP VENOUS THROMBOSIS ULTRASOUND	822
PERICARDIAL EFFUSION	781	ULTRASOUND-GUIDED VENOUS ACCESS	826
DIGOXIN EFFECT, TOXICITY	782	OCULAR ULTRASOUND	829
TRICYCLIC ANTIDEPRESSANT EFFECT	783	SUPERFICIAL ULTRASOUND	831
LIMB LEAD REVERSAL	784		
LOW VOLTAGE	785		
		Chapter 25	
		MICROSCOPIC FINDINGS	835
		Diane M. Birnbaumer	
Chapter 24			
EMERGENCY ULTRASOUND	787	MICROSCOPIC URINALYSIS	836
Paul R. Sierzenski • Jason Gukhool • Stephen J. Leech		SYNOVIAL FLUID ANALYSIS FOR CRYSTALS	838
		GRAM STAIN	840
EMERGENCY ULTRASOUND	788	DARK-FIELD EXAMINATION	841
TRAUMA ULTRASOUND	790	VAGINAL FLUID WET MOUNT	842
E-FAST WINDOW 1: SUBXIPHOID-CARDIAC (SUBCOSTAL VIEW)	791	POTASSIUM HYDROXIDE MOUNT	843
E-FAST WINDOW 2: RIGHT UPPER QUADRANT (MORISON POUCH)	793	STOOL EXAMINATION FOR FECAL LEUKOCYTES	844
E-FAST WINDOW 3: LEFT UPPER QUADRANT (SPLENORENAL VIEW)	794	SKIN SCRAPING FOR DERMATOSES AND INFESTATIONS	845
E-FAST WINDOW 4: SUPRAPUBIC	796	CEREBROSPINAL FLUID EXAMINATION: INDIA INK PREPARATION	846
E-FAST WINDOW 5: THORAX (RIGHT AND LEFT)	798	CEREBROSPINAL FLUID EXAMINATION: WRIGHT STAIN—THIN SMEAR FOR MALARIA	847
CARDIAC ULTRASOUND	800	FERNING PATTERN FOR AMNIOTIC FLUID	848
ECHO WINDOW 1: SUBXIPHOID-CARDIAC (SUBCOSTAL VIEW)	801	PERIPHERAL BLOOD SMEAR FOR SCHISTOCYTES	849
ECHO WINDOW 2: PARASTERNAL LONG-AXIS VIEW (PSLAX)	802	TAPE TEST FOR <i>ENTEROBIAS VERMICULARIS</i> EGGS	850
ECHO WINDOW 3: PARASTERNAL SHORT-AXIS VIEW (PSSAX)	803	TZANCK PREPARATION	852
		INDEX	853