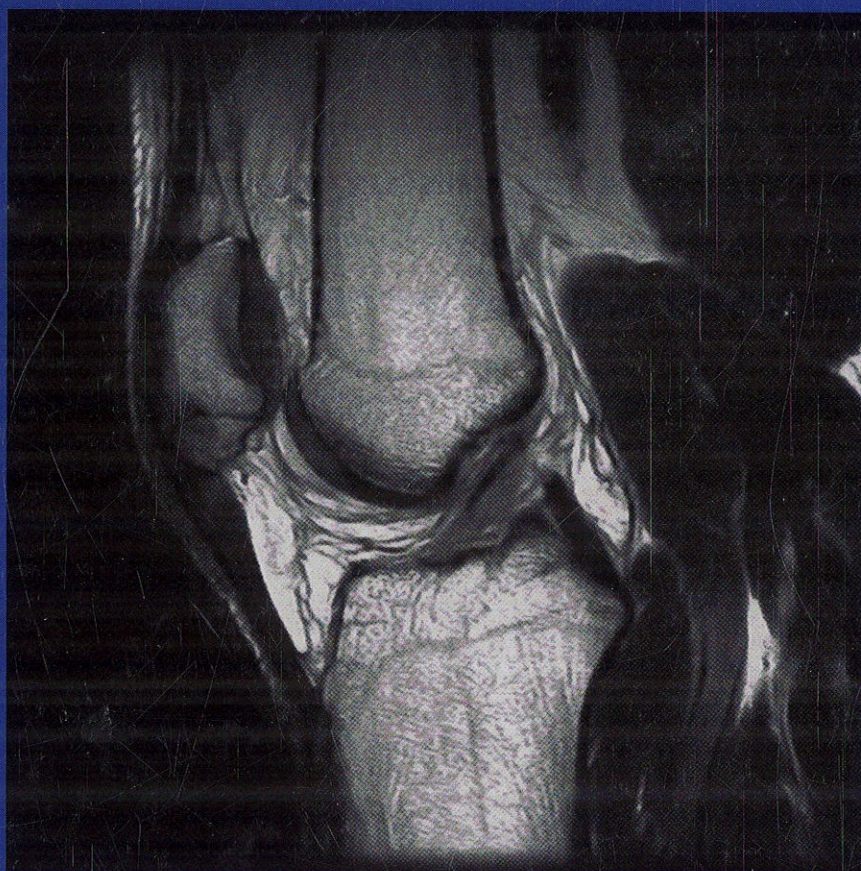


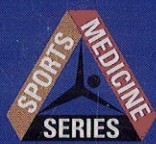
ATLAS OF IMAGING IN SPORTS MEDICINE

SECOND EDITION



JOCK ANDERSON & JOHN W READ

BILL BREIDAHN, GUS FERGUSON, JAMES LINKLATER,
PHIL LUCAS, JENNIE NOAKES, TONY PEDUTO



*Keeping you
one step ahead*

Contents

<i>Foreword</i>	v	Chapter 2 The hand and wrist	28
<i>Preface</i>	xi	Imaging of the hand	29
<i>The authors</i>	xiii	Hand injuries	34
<i>Chapter associate authors</i>	xiv	Bone and joint injuries	34
<i>Acknowledgments</i>	xvi	Tendon injuries	46
		Imaging of the wrist	58
		Plain films	58
		Additional radiographic views	65
		Ulna variance	66
Chapter 1 Basic principles	1	Specific wrist injuries	68
The scope of sports medicine	1	The biomechanics of wrist injuries	68
Basic concepts	2	Acute fractures	68
When to image	2	Stress fractures	86
Clinical red flags	2	Patterns of fractures: perilunate injuries	88
Which test?	2	Carpal ligament injuries and instabilities	90
Bone	4	TFCC injury and DRUJ instability	100
Joint	4	Tendinopathies	109
Tendon	6	References	125
Ligament	6		
Muscle	7		
Nerve	8	Chapter 3 The elbow and forearm	127
Vessel	8	The biomechanics of elbow injuries	127
Imaging standards	8	Routine imaging of the elbow	127
Radiation dose	10	Anteroposterior (AP) view	128
Overuse injuries	11	Lateral-oblique view	128
Chronic bone stress	12	Lateral view	129
Chronic tendon stress	12	Axial view	129
Chronic bursal stress	16	Other helpful plain film views	130
Miscellaneous	16	Other imaging methods	131
Physiological changes	16	The mature elbow	131
Spectrum of healing	17	Tips on looking at plain films of mature athletes	131
Reflex sympathetic dystrophy	19	The mechanisms and patterns of elbow injuries	137
Arthrofibrosis	19	Elbow injuries	151
Post-traumatic fat necrosis	20	The immature elbow	168
Paediatric injuries	21	Imaging immature elbow injuries	168
MRI concepts	22	Tips on looking at plain films of immature athletes	168
T1-weighted FSE sequences	23	Sporting injuries	170
T2-weighted FSE sequences	23	Routine imaging of the forearm	180
PD-weighted FSE sequences	23	The biomechanics of pronation and supination	181
STIR or 'Fat-Sat' sequences	23	Forearm stability	181
GRE sequences	24	Problems with pronation and supination	181
'Magic angle' phenomenon	25	Stress fractures of the forearm	182
Contraindications to MRI	26	Forearm splints	183
References	26	References	184

Chapter 4 The shoulder, shoulder-girdle and thoracic cage	186		
Anatomy and biomechanics of the shoulder	187	CT scanning	311
Methods of imaging the shoulder	187	MRI	312
Plain films	188	Ultrasound	313
Ultrasound	209	Injuries to the pelvis and hip	314
CT scanning	211	Acute bone injury	314
Nuclear medicine	213	Chronic bone injury	317
MRI	214	'Groin strain'	328
Arthrography	215	Soft-tissue injuries	336
Glenohumeral instability	217	Developmental conditions predisposing	
Categories of instability with respect to the age of the athlete	217	to hip injury	366
Categories of instability with respect to the patterns of glenohumeral dislocation	219	Hip joint dysplasia	366
Major patterns of SLAP tears	229	Anterior femoroacetabular impingement: a cause of groin pain	369
Type I SLAP tears	231	Coxa vara	371
Type II SLAP tears	232	Coxa valga	371
Type III SLAP tears	235	Femoral anteversion	372
Type IV SLAP tears	235	Miscellaneous conditions	373
Shoulder impingement and rotator cuff tendinopathy	237	References	388
Subacromial impingement syndrome	237		
Internal impingement syndrome	252	Chapter 6 The knee and leg	391
Coracoid impingement syndrome	252	The knee	391
Abnormalities of the LHB tendon	254	Imaging the knee	393
LHB tendon rupture	254	Tips on looking at plain films of the knee	399
LHB tendinopathy	255	Acute fractures	411
LHB tendon instability	257	Stress fractures of the knee	430
Other conditions of the shoulder	258	Isolated ligament injuries	435
Shoulder capsulitis	258	Complex ligament injuries	447
Calcific tendinopathy	261	Tendon and bursal injuries: tendinopathy, rupture and bursopathy	451
Lateral acromial apophysitis	263	The extensor mechanism	462
Avulsion of the pectoralis major	264	The patella and patellofemoral joint	471
Stress fractures of the shoulder	265	Meniscal pathology	478
Scapulothoracic bursopathy	265	Disorders of the articular cartilage	490
Paediatric shoulder injuries	266	Other conditions	497
Acute paediatric shoulder injuries	266	The leg	513
Overuse paediatric shoulder injuries	267	Imaging of the leg	513
Sporting injuries of the ACJ, clavicle and SCJ	268	Acute fractures of the leg	514
The ACJ	268	Stress fractures of the leg	514
Injury to the clavicle	272	Vertical stress fractures of the leg	522
The SCJ	275	Plastic bowing of the fibula	522
Rib injuries in sport	276	Compartment syndrome	524
Imaging guidelines for acute rib fractures	276	Muscle tears in the leg	525
Stress fractures of the ribs	276	Popliteal artery entrapment syndrome	527
Neural abnormalities	280	References	529
Suprascapular neuropathy	280		
Axillary nerve injury	280	Chapter 7 The ankle and foot	533
Vascular abnormalities	282	The ankle	533
References	282	Imaging the ankle	533
		Ankle joint injuries	551
Chapter 5 The pelvis, hip and thigh	285	Ankle ligament injuries	557
Radiographic anatomy of the hip	285	Ankle arthrofibrosis	596
Tips on looking at plain films of the pelvis and hips	290	Miscellaneous conditions of the ankle	618
Methods of imaging the pelvis and hips	305	The foot	620
Routine plain film series	305	Imaging the foot	620
Additional plain films	305	Sports-related injuries of the forefoot	635
Nuclear bone scanning	310	Other conditions of the forefoot	651
		Acute sports-related injuries of the mid-foot	657
		Overuse sports-related injuries of the mid-foot	667

Other mid-foot conditions	671	Chapter 9 The face, jaw and larynx	801
Sports-related injuries of the hind-foot	676	The incidence of facial fractures in sport:	
References	711	a literature review	801
Chapter 8 The spine	717	Imaging facial injuries	803
Imaging the spine	718	Standard plain film views of the facial bones	804
Plain films	718	AP axial projection (reversed Towne's view)	806
Nuclear bone scans	718	Tips on looking at plain films of the facial bones	809
CT	718	CT examination of the facial bones	814
MRI	722	The use of other imaging methods	816
Radiological evaluation of the cervical spine		Facial fractures	817
following trauma	722	Orbital fractures	817
A routine non-traumatic cervical spine series	724	Zygomaticomaxillary fractures	821
The neutral lateral view	724	Maxillary fractures	822
Flexion and extension views	724	Bilateral mid-face fractures	824
The AP view from C3 to T1	727	Nasal fractures	826
The AP view of the atlantoaxial region	727	Mid-face fractures	829
AP oblique views	727	Mandibular fractures	831
Tips on looking at plain films of the cervical spine	727	Fractures of the body and angle of the mandible	831
The lateral view	727	Symphyseal and parasymphyseal fractures	831
AP views	733	Condylar fractures	831
Oblique views	736	Fractures of the ramus and coronoid process of the	
Additional radiographic views	737	mandible	832
Looking at MR images of the cervical spine	738	Imaging of the mandibular fractures	832
Assessment of spinal structures for evidence of injury	742	TMJ injuries	836
Cervical spine trauma	745	A stress reaction secondary to sport: 'surfer's ear'	839
Cervical hyperflexion injuries	747	Fractures of the larynx	840
Cervical hyperextension injuries	752	Imaging of laryngeal injuries	840
Spinal cord injuries	758	References	840
Post-traumatic syrinx formation	758	Chapter 10 Intervention	842
Cervical spinal stenosis	758	Ethical considerations and the position	
Radicular symptoms following a cervical spine injury	762	of the radiologist	842
Imaging of the thoracic spine and lumbosacral spine	764	Masking pain	843
Routine views of the thoracic spine	764	The use of corticosteroids	843
Routine views of the lumbar spine	765	Non-spinal intervention in sports medicine	844
Imaging the thoracic spine and lumbosacral spine		Joint injections	844
following acute trauma	767	Conditions that may benefit from percutaneous	
Fractures of the thoracolumbar spine	769	intervention	847
Thoracolumbar vertebral wedge compression		Aspirations	857
fractures	769	Perineural injections of peripheral nerves	858
Burst fractures	769	Injections of the plantar fascia	859
Transverse process fractures	770	Spinal intervention in sports medicine	859
Other thoracolumbar spine conditions		Tips on injection technique	860
seen in athletes	772	Lumbar discography	860
Investigating lower back pain	782	Facet (zygopophyseal) joint intervention	863
Lumbar intervertebral disc degeneration	783	Nerve root sleeve blocks	870
Nerve root compression	788	Spontaneous cerebrospinal fluid leaks	873
Lumbar spinal canal stenosis	790	References	874
Facet joint degeneration	791	<i>Index</i>	877
Lumbosacral pseudarthrosis	792		
Idiopathic scoliosis	794		
Sacroiliac joints	794		
Mimics of traumatic disease	796		
Discitis	796		
Disc calcification in children	796		
Spondyloarthropathy	797		
Osteoid osteoma	797		
References	798		