

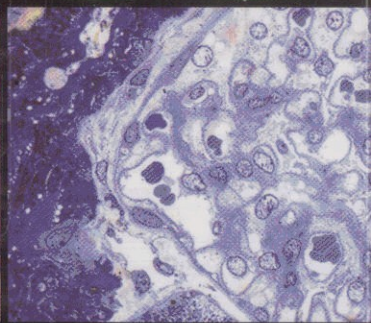
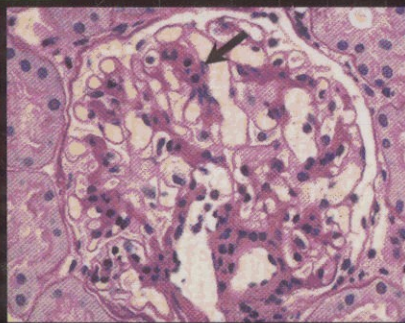
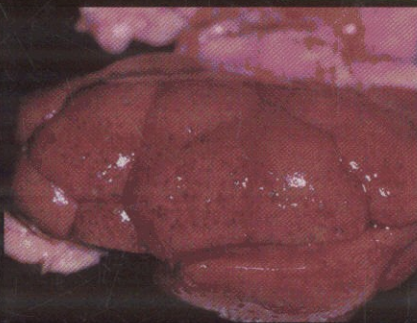
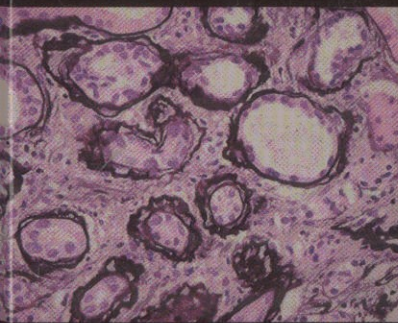


SILVA'S

Diagnostic Renal Pathology

Edited by

**Xin J. Zhou • Zoltan Laszik • Tibor Nadasdy
Vivette D. D'Agati • Fred G. Silva**



CAMBRIDGE

Medicine

Contents

Contributors ix
Preface xi

1. RENAL ANATOMY 1

William L. Clapp

**2. RENAL BIOPSY: THE NEPHROLOGIST'S
VIEWPOINT 47**

Robert D. Toto

**3. ALGORITHMIC APPROACH TO THE
INTERPRETATION OF RENAL BIOPSY 55**

Xin J. Zhou, Zoltan Laszik, and Fred G. Silva

**4. GLOMERULAR DISEASES ASSOCIATED
WITH NEPHROTIC SYNDROME AND
PROTEINURIA 79**

Michael B. Stokes, Glen S. Markowitz, and Vivette
D. D'Agati

**5. GLOMERULAR DISEASES ASSOCIATED
PRIMARILY WITH ASYMPTOMATIC OR
GROSS HEMATURIA 127**

Randolph A. Hennigar and James A. Tumlin

**6. GLOMERULAR DISEASES ASSOCIATED WITH
NEPHRITIC SYNDROME AND/OR RAPIDLY
PROGRESSIVE GLOMERULONEPHRITIS 178**

Thomas E. Rogers, Dinesh Rakheja, and Xin J. Zhou

**7. SYSTEMIC LUPUS ERYTHEMATOSUS AND
OTHER AUTOIMMUNE DISEASES (MIXED
CONNECTIVE TISSUE DISEASE,
RHEUMATOID ARTHRITIS, AND SJOGREN'S
SYNDROME) 229**

Michael B. Stokes, Samih H. Nasr, and Vivette D.
D'Agati

8. METABOLIC DISEASES OF THE KIDNEY 273

Zoltan G. Laszik and Lukas Haragsim

9. THROMBOTIC MICROANGIOPATHIES 311

Zoltan G. Laszik

**10. RENAL DISEASES ASSOCIATED WITH
HEMATOPOIETIC DISORDERS OR ORGANIZED
DEPOSITS 345**

Guillermo A. Herrera

11. TUBULOINTERSTITIAL DISEASES 407

Shane M. Meehan and Tibor Nadasdy

**12. HYPERTENSION AND VASCULAR DISEASES
OF THE KIDNEY 436**

Michael D. Hughson

**13. CYSTIC AND DEVELOPMENTAL
DISEASES 465**

Arthur G. Weinberg

14. THE AGING KIDNEY 488

Xin J. Zhou, Dinesh Rakheja, and Fred G. Silva

15. END-STAGE KIDNEY DISEASE 502

Steven A. Bigler and Michael D. Hughson

**16. PATHOLOGY OF RENAL
TRANSPLANTATION 522**

Tibor Nadasdy, Anjali Satoskar, and Gyongyi Nadasdy

17. TUMORS OF THE KIDNEY 568

Satish K. Ticktoo, Pedram Argani, and Mahul B. Amin

Index 603