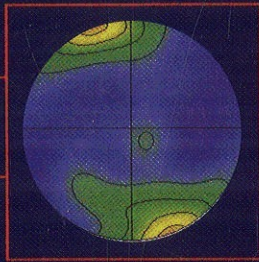
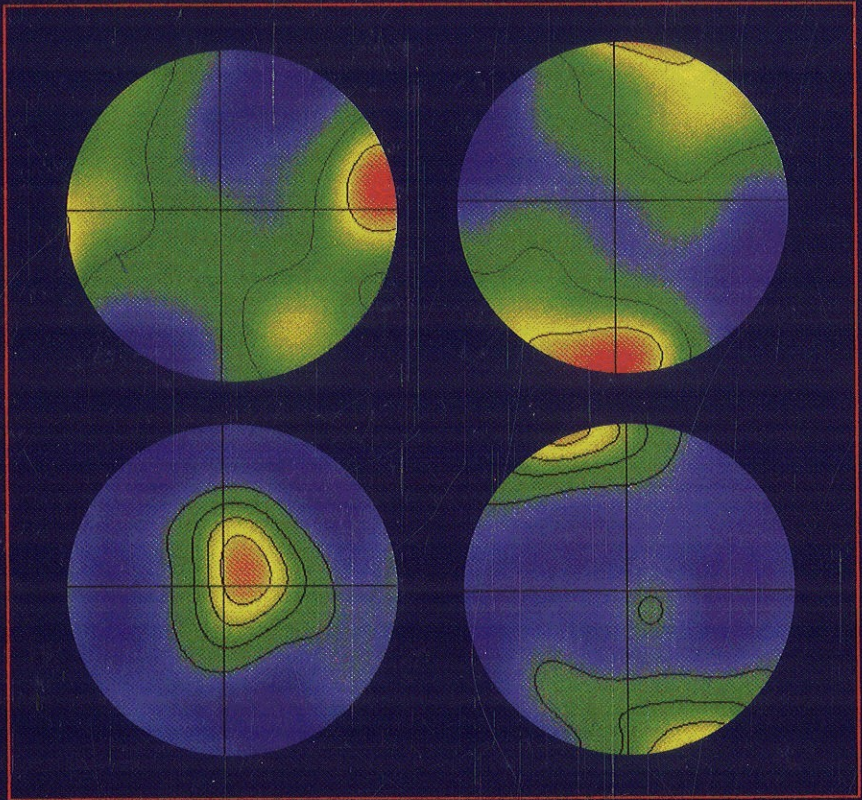


# Deformation of Earth Materials



**An Introduction to  
the Rheology of  
Solid Earth**



**SHUN-ICHIRO KARATO**

CAMBRIDGE

# Contents

<b>Preface</b>	page ix
<b>Part I General background</b>	1
1 Stress and strain	3
1.1 Stress	3
1.2 Deformation, strain	7
2 Thermodynamics	13
2.1 Thermodynamics of reversible processes	13
2.2 Some comments on the thermodynamics of a stressed system	28
2.3 Thermodynamics of irreversible processes	29
2.4 Thermally activated processes	32
3 Phenomenological theory of deformation	34
3.1 Classification of deformation	34
3.2 Some general features of plastic deformation	35
3.3 Constitutive relationships for non-linear rheology	36
3.4 Constitutive relation for transient creep	38
3.5 Linear time-dependent deformation	39
<b>Part II Materials science of deformation</b>	49
4 Elasticity	51
4.1 Introduction	51
4.2 Elastic constants	52
4.3 Isothermal versus adiabatic elastic constants	55
4.4 Experimental techniques	57
4.5 Some general trends in elasticity: Birch's law	59
4.6 Effects of chemical composition	67
4.7 Elastic constants in several crystal structures	70
4.8 Effects of phase transformations	72
5 Crystalline defects	75
5.1 Defects and plastic deformation: general introduction	75
5.2 Point defects	76
5.3 Dislocations	82
5.4 Grain boundaries	94
6 Experimental techniques for study of plastic deformation	99
6.1 Introduction	99
6.2 Sample preparation and characterization	99

6.3	<i>Control of thermochemical environment and its characterization</i>	102
6.4	<i>Generation and measurements of stress and strain</i>	104
6.5	<i>Methods of mechanical tests</i>	108
6.6	<i>Various deformation geometries</i>	112
<b>7</b>	<b>Brittle deformation, brittle–plastic and brittle–ductile transition</b>	<b>114</b>
7.1	<i>Brittle fracture and plastic flow: a general introduction</i>	114
7.2	<i>Brittle fracture</i>	115
7.3	<i>Transitions between different regimes of deformation</i>	118
<b>8</b>	<b>Diffusion and diffusional creep</b>	<b>123</b>
8.1	<i>Fick's law</i>	123
8.2	<i>Diffusion and point defects</i>	125
8.3	<i>High-diffusivity paths</i>	126
8.4	<i>Self-diffusion, chemical diffusion</i>	127
8.5	<i>Grain-size sensitive creep (diffusional creep, superplasticity)</i>	129
<b>9</b>	<b>Dislocation creep</b>	<b>143</b>
9.1	<i>General experimental observations on dislocation creep</i>	143
9.2	<i>The Orowan equation</i>	145
9.3	<i>Dynamics of dislocation motion</i>	145
9.4	<i>Dislocation multiplication, annihilation</i>	154
9.5	<i>Models for steady-state dislocation creep</i>	157
9.6	<i>Low-temperature plasticity (power-law breakdown)</i>	161
9.7	<i>Deformation of a polycrystalline aggregate by dislocation creep</i>	162
9.8	<i>How to identify the microscopic mechanisms of creep</i>	164
9.9	<i>Summary of dislocation creep models and a deformation mechanism map</i>	164
<b>10</b>	<b>Effects of pressure and water</b>	<b>168</b>
10.1	<i>Introduction</i>	168
10.2	<i>Intrinsic effects of pressure</i>	169
10.3	<i>Effects of water</i>	181
<b>11</b>	<b>Physical mechanisms of seismic wave attenuation</b>	<b>199</b>
11.1	<i>Introduction</i>	199
11.2	<i>Experimental techniques of anelasticity measurements</i>	199
11.3	<i>Solid-state mechanisms of anelasticity</i>	202
11.4	<i>Anelasticity in a partially molten material</i>	210
<b>12</b>	<b>Deformation of multi-phase materials</b>	<b>214</b>
12.1	<i>Introduction</i>	214
12.2	<i>Some simple examples</i>	215
12.3	<i>More general considerations</i>	216
12.4	<i>Percolation</i>	222
12.5	<i>Chemical effects</i>	225
12.6	<i>Deformation of a single-phase polycrystalline material</i>	225
12.7	<i>Experimental observations</i>	225
12.8	<i>Structure and plastic deformation of a partially molten material</i>	227
<b>13</b>	<b>Grain size</b>	<b>232</b>
13.1	<i>Introduction</i>	232
13.2	<i>Grain-boundary migration</i>	233
13.3	<i>Grain growth</i>	236
13.4	<i>Dynamic recrystallization</i>	243

13.5	<i>Effects of phase transformations</i>	249
13.6	<i>Grain size in Earth's interior</i>	253
<b>14</b>	<b>Lattice-preferred orientation</b>	<b>255</b>
14.1	<i>Introduction</i>	255
14.2	<i>Lattice-preferred orientation: definition, measurement and representation</i>	256
14.3	<i>Mechanisms of lattice-preferred orientation</i>	262
14.4	<i>A fabric diagram</i>	268
14.5	<i>Summary</i>	269
<b>15</b>	<b>Effects of phase transformations</b>	<b>271</b>
15.1	<i>Introduction</i>	271
15.2	<i>Effects of crystal structure and chemical bonding: isomechanical groups</i>	271
15.3	<i>Effects of transformation-induced stress-strain: transformation plasticity</i>	280
15.4	<i>Effects of grain-size reduction</i>	286
15.5	<i>Anomalous rheology associated with a second-order phase transformation</i>	286
15.6	<i>Other effects</i>	287
<b>16</b>	<b>Stability and localization of deformation</b>	<b>288</b>
16.1	<i>Introduction</i>	288
16.2	<i>General principles of instability and localization</i>	289
16.3	<i>Mechanisms of shear instability and localization</i>	293
16.4	<i>Long-term behavior of a shear zone</i>	300
16.5	<i>Localization of deformation in Earth</i>	300
<b>Part III</b>	<b>Geological and geophysical applications</b>	<b>303</b>
<b>17</b>	<b>Composition and structure of Earth's interior</b>	<b>305</b>
17.1	<i>Gross structure of Earth and other terrestrial planets</i>	305
17.2	<i>Physical conditions of Earth's interior</i>	306
17.3	<i>Composition of Earth and other terrestrial planets</i>	314
17.4	<i>Summary: Earth structure related to rheological properties</i>	322
<b>18</b>	<b>Inference of rheological structure of Earth from time-dependent deformation</b>	<b>323</b>
18.1	<i>Time-dependent deformation and rheology of Earth's interior</i>	323
18.2	<i>Seismic wave attenuation</i>	324
18.3	<i>Time-dependent deformation caused by a surface load: post-glacial isostatic crustal rebound</i>	326
18.4	<i>Time-dependent deformation caused by an internal load and its gravitational signature</i>	331
18.5	<i>Summary</i>	337
<b>19</b>	<b>Inference of rheological structure of Earth from mineral physics</b>	<b>338</b>
19.1	<i>Introduction</i>	338
19.2	<i>General notes on inferring the rheological properties in Earth's interior from mineral physics</i>	339
19.3	<i>Strength profile of the crust and the upper mantle</i>	342
19.4	<i>Rheological properties of the deep mantle</i>	358
19.5	<i>Rheological properties of the core</i>	361
<b>20</b>	<b>Heterogeneity of Earth structure and its geodynamic implications</b>	<b>363</b>
20.1	<i>Introduction</i>	363
20.2	<i>High-resolution seismology</i>	364
20.3	<i>Geodynamical interpretation of velocity (and attenuation) tomography</i>	370

<b>21 Seismic anisotropy and its geodynamic implications</b>	391
<i>21.1 Introduction</i>	391
<i>21.2 Some fundamentals of elastic wave propagation in anisotropic media</i>	392
<i>21.3 Seismological methods for detecting anisotropic structures</i>	398
<i>21.4 Major seismological observations</i>	401
<i>21.5 Mineral physics bases of geodynamic interpretation of seismic anisotropy</i>	402
<i>21.6 Geodynamic interpretation of seismic anisotropy</i>	407
<b>References</b>	412
<b>Materials index</b>	452
<b>Subject index</b>	454

The colour plates are between pages 118 and 119.