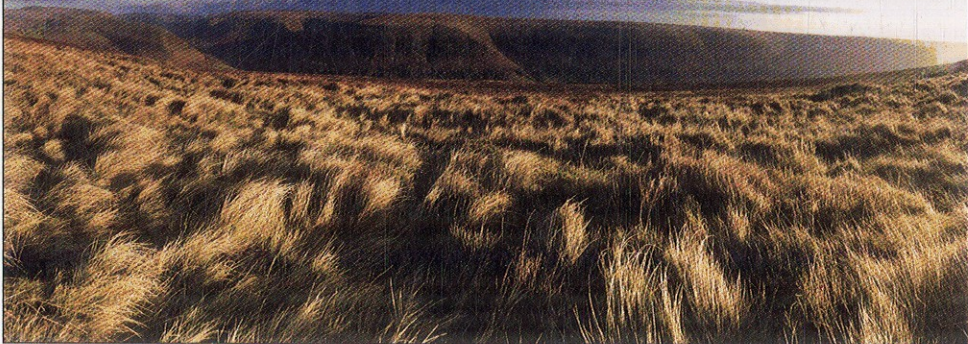


FIFTH EDITION

Introduction to Geographic Information Systems

Kang-Tsung Chang



McGRAW-HILL INTERNATIONAL EDITION



CONTENTS

Preface *xiii*

CHAPTER 1

INTRODUCTION 1

1.1 GIS 1

1.1.1 Components of a GIS 2

1.1.2 A Brief History of GIS 3

1.1.3 GIS Software Products 3

*Box 1.1 A List of GIS Software Producers and
Their Main Products 4*

1.2 GIS Applications 4

1.3 Geospatial Data 5

1.3.1 Coordinate Systems 5

*Box 1.2 Google Maps, Microsoft Virtual Earth,
and Yahoo! Maps 6*

Box 1.3 Monitoring by GPS 6

1.3.2 Vector Data Model 6

1.3.3 Raster Data Model 8

1.4 GIS Operations 8

1.4.1 Data Acquisition 8

1.4.2 Attribute Data Management 8

1.4.3 Data Display 9

1.4.4 Data Exploration 9

1.4.5 Data Analysis 9

1.4.6 GIS Models and Modeling 10

1.5 Organization of This Book 11

1.6 Concepts and Practice 12

Key Concepts and Terms 13

Review Questions 13

Applications: Introduction 14

Task 1: Introduction to ArcCatalog 14

Task 2: Introduction to ArcMap 15

Challenge Task 17

References 17

CHAPTER 2

COORDINATE SYSTEMS 18

2.1 Geographic Coordinate System 19

2.1.1 Approximation of the Earth 20

2.1.2 Datum 21

Box 2.1 NGS Benchmark Database 21

2.2 Map Projections 23

2.2.1 Types of Map Projections 23

*Box 2.2 How to Measure Distances on the
Earth's Surface 23*

2.2.2 Map Projection Parameters 24

2.3 Commonly Used Map Projections 26

2.3.1 Transverse Mercator 27

2.3.2 Lambert Conformal Conic 27

2.3.3 Albers Equal-Area Conic 28

2.3.4 Equidistant Conic 28

2.4 Projected Coordinate Systems 28

Box 2.3 Map Scale 29

2.4.1 The Universal Transverse Mercator (UTM)
Grid System 29

2.4.2 The Universal Polar Stereographic (UPS)
Grid System 30

2.4.3 The State Plane Coordinate (SPC) System 30

2.4.4 The Public Land Survey System (PLSS) 31

2.5 Working with Coordinate Systems in GIS 33

2.5.1 Projection File 33

2.5.2	Predefined Coordinate Systems	33
	<i>Box 2.4 A Projection File Example</i>	33
2.5.3	On-the-Fly Projection	34
	<i>Box 2.5 Coordinate Systems in ArcGIS</i>	34
	Key Concepts and Terms	35
	Review Questions	36
	Applications: Coordinate Systems	37
	Task 1: Project a Shapefile from a Geographic to a Projected Coordinate System	37
	Task 2: Import a Coordinate System	38
	Task 3: Project a Shapefile by Using a Predefined Coordinate System	39
	Task 4: Convert from One Coordinate System to Another	39
	Challenge Task	40
	References	40

CHAPTER 3

VECTOR DATA MODEL 41

3.1	Representation of Simple Features	42
	<i>Box 3.1 Geodatabase, Shapefile, and Coverage for ESRI Software</i>	42
3.2	Topology	43
	3.2.1 TIGER	43
	<i>Box 3.2 Adjacency and Incidence</i>	44
	3.2.2 Importance of Topology	45
	<i>Box 3.3 Topology or No Topology</i>	46
3.3	Georelational Data Model	46
	3.3.1 The Coverage	46
	3.3.2 Coverage Data Structure	47
	3.3.3 Nontopological Vector Data	48
3.4	Object-Based Data Model	49
	3.4.1 Classes and Class Relationships	49
	3.4.2 Interface	50
	<i>Box 3.4 How to Use an Interface</i>	51
	<i>Box 3.5 ArcObjects and ArcGIS</i>	51
	3.4.3 The Geodatabase	51
	3.4.4 Topology Rules	52
	3.4.5 Advantages of the Geodatabase	53
	<i>Box 3.6 NHDinGEO</i>	53
3.5	Representation of Composite Features	54
	3.5.1 TINs	54
	3.5.2 Regions	55
	3.5.3 Routes	56

	Key Concepts and Terms	58
	Review Questions	59
	Applications: Vector Data Model	60
	Task 1: Examine the Data File Structure of Coverage and Shapefile	60
	Task 2: Create File Geodatabase, Feature Dataset, and Feature Class	61
	Task 3: Convert a Shapefile to a Personal Geodatabase Feature Class	62
	Task 4: Examine Polylines with Measures	62
	Task 5: View Regions and Routes	63
	Task 6: View TIN	63
	Challenge Task	63
	References	64

CHAPTER 4

RASTER DATA MODEL 65

4.1	Elements of the Raster Data Model	66
	4.1.1 Cell Value	66
	<i>Box 4.1 Rules in Determining a Categorical Cell Value</i>	67
	4.1.2 Cell Size	67
	4.1.3 Raster Bands	67
	4.1.4 Spatial Reference	67
4.2	Types of Raster Data	68
	4.2.1 Satellite Imagery	68
	4.2.2 USGS Digital Elevation Models (DEMs)	69
	<i>Box 4.2 No-Data Slivers in a 7.5-minute DEM</i>	70
	4.2.3 Non-USGS DEMs	71
	4.2.4 Global DEMs	71
	4.2.5 Digital Orthophotos	72
	4.2.6 Bi-Level Scanned Files	72
	4.2.7 Digital Raster Graphics (DRGs)	73
	4.2.8 Graphic Files	73
	4.2.9 GIS Software-Specific Raster Data	73
4.3	Raster Data Structure	74
	4.3.1 Cell-by-Cell Encoding	74
	4.3.2 Run-Length Encoding	74
	4.3.3 Quad Tree	75
	4.3.4 Header File	76
	<i>Box 4.3 A Header File Example</i>	76
4.4	Raster Data Compression	77
	<i>Box 4.4 A Simple Wavelet Example: The Haar Wavelet</i>	78

4.5 Data Conversion and Integration	78
4.5.1 Rasterization	78
4.5.2 Vectorization	78
4.5.3 Integration of Raster and Vector Data	79
<i>Box 4.5 Linking Vector Data with Images</i>	80
<i>Box 4.6 Digital Earth</i>	80
Key Concepts and Terms	81
Review Questions	81
Applications: Raster Data Model	82
Task 1: View USGS DEM Data	82
Task 2: View a Satellite Image in ArcMap	83
Task 3: Convert Vector Data to Raster Data	83
Challenge Task	84
References	84

CHAPTER 5

GIS DATA ACQUISITION 87

5.1 Existing GIS Data	88
5.1.1 Federal Geographic Data Committee	88
5.1.2 Geospatial One-Stop	88
5.1.3 U.S. Geological Survey	88
<i>Box 5.1 Clearinghouse and Portal</i>	89
5.1.4 U.S. Census Bureau	89
5.1.5 Natural Resources Conservation Service	90
5.1.6 Statewide Public Data: An Example	90
5.1.7 Regional Public Data: An Example	90
5.1.8 Metropolitan Public Data: An Example	90
5.1.9 County-Level Public Data: An Example	90
5.1.10 GIS Data from Private Companies	90
5.2 Metadata	91
5.3 Conversion of Existing Data	91
5.3.1 Direct Translation	91
<i>Box 5.2 ISO Metadata Standards</i>	91
5.3.2 Neutral Format	92
5.4 Creating New Data	93
5.4.1 Remotely Sensed Data	93
<i>Box 5.3 Importing DLG, SDTS, TIGER, and VPF Files in ArcGIS</i>	93
5.4.2 Field Data	94
<i>Box 5.4 An Example of GPS Data</i>	95
5.4.3 Text Files with x -, y -Coordinates	97
5.4.4 Digitizing Using a Digitizing Table	97
5.4.5 Scanning	98
<i>Box 5.5 Vectorization Settings in ArcGIS</i>	101

5.4.6 On-Screen Digitizing	101
5.4.7 Importance of Source Maps	101
Key Concepts and Terms	102
Review Questions	103
Applications: GIS Data Application	104
Task 1: Download and Process DEM and DLG from the Internet	104
Task 2: Digitize On-Screen in ArcMap	105
Task 3: Add XY Data in ArcMap	106
Task 4: Access California Watersheds on the Geography Network Map Server	107
Challenge Task	107
References	108

CHAPTER 6

GEOMETRIC TRANSFORMATION 109

6.1 Geometric Transformation	110
6.1.1 Map-to-Map and Image-to-Map Transformation	110
6.1.2 Transformation Methods	110
6.1.3 Affine Transformation	111
6.1.4 Control Points	112
<i>Box 6.1 Estimation of Transformation Coefficients</i>	113
<i>Box 6.2 Output from an Affine Transformation</i>	113
6.2 Root Mean Square (RMS) Error	114
<i>Box 6.3 RMS from an Affine Transformation</i>	115
6.3 Interpretation of RMS Errors on Digitized Maps	115
6.4 Resampling of Pixel Values	117
6.4.1 Resampling Methods	117
6.4.2 Other Uses of Resampling	117
<i>Box 6.4 Computation for Bilinear Interpolation</i>	118
<i>Box 6.5 Pyramiding</i>	118
Key Concepts and Terms	118
Review Questions	119
Applications: Geometric Transformation	120
Task 1: Georeference and Rectify a Scanned Map	120
Task 2: Use ArcScan to Vectorize Raster Lines	121

Task 3: Perform Image-to-Map Transformation 122
Challenge Task 123
References 124

CHAPTER 7

SPATIAL DATA EDITING 125

7.1 Location Errors 126
7.1.1 Location Errors Using Secondary Data Sources 126
7.1.2 Causes of Digitizing Errors 126
7.1.3 Location Errors Using Primary Data Sources 127
7.2 Spatial Data Accuracy Standards 127
Box 7.1 National Standard for Spatial Data Accuracy (NSSDA) Statistic 128
7.3 Topological Errors 128
7.3.1 Topological Errors with Geometric Features 128
7.3.2 Topological Errors between Layers 130
7.4 Topological Editing 131
7.4.1 Topological Editing on Coverages 131
Box 7.2 GIS Packages for Topological Editing 131
Box 7.3 Topological Editing in ArcGIS 132
7.4.2 Editing Using Map Topology 134
7.4.3 Editing Using Topology Rules 134
7.5 Nontopological Editing 135
7.5.1 Editing Existing Features 135
7.5.2 Creating Features from Existing Features 135
Box 7.4 Basic Editing in ArcGIS 135
7.6 Other Editing Operations 136
7.6.1 Edgematching 136
Box 7.5 Edgematching and Advanced Editing in ArcGIS 137
7.6.2 Line Simplification and Smoothing 137
Key Concepts and Terms 139
Review Questions 140
Applications: Spatial Data Editing 141
Task 1: Edit a Shapefile 141
Task 2: Use Cluster Tolerance to Fix Digitizing Errors between Two Shapefiles 142
Task 3: Use Topology Rule to Fix Dangles 143

Task 4: Use Topology Rule to Ensure That Two Polygon Layers Cover Each Other 144
Task 5: Perform Edgematching 145
Challenge Task 146
References 147

CHAPTER 8

ATTRIBUTE DATA MANAGEMENT 148

8.1 Attribute Data in GIS 149
8.1.1 Type of Attribute Table 150
8.1.2 Database Management 150
Box 8.1 Categorical and Numeric Data 151
8.1.3 Type of Attribute Data 151
8.2 The Relational Model 151
8.2.1 SSURGO: A Relational Database Example 153
8.2.2 Normalization 153
8.2.3 Types of Relationships 155
8.3. Joins, Relates, and Relationship Classes 158
8.3.1 Joins 158
8.3.2 Relates 158
8.3.3 Relationship Classes 158
8.4 Attribute Data Entry 158
8.4.1 Field Definition 158
8.4.2 Methods of Data Entry 159
8.4.3 Attribute Data Verification 159
8.5 Manipulation of Fields and Attribute Data 159
8.5.1 Adding and Deleting Fields 159
Box 8.2 Adding and Deleting Fields in ArcGIS Desktop 160
8.5.2 Classification of Attribute Data 160
8.5.3 Computation of Attribute Data 160
Key Concepts and Terms 161
Review Questions 161
Applications: Attribute Data Management 162
Task 1: Enter Attribute Data of a Geodatabase Feature Class 162
Task 2: Join Tables 163
Task 3: Relate Tables 164
Task 4: Create New Attribute by Data Classification 164

Task 5: Use Advanced Method for Attribute Data

Classification 165

Task 6: Create New Attribute by Data

Computation 165

Task 7: Create Relationship Class 165

Challenge Task 166

References 167

CHAPTER 9

DATA DISPLAY AND CARTOGRAPHY 168

9.1 Cartographic Representation 169

9.1.1 Spatial Features and Map Symbols 170

9.1.2 Use of Color 171

9.1.3 Data Classification 172

9.1.4 Generalization 172

9.2 Types of Quantitative Maps 173

Box 9.1 Representations 173

Box 9.2 Locating Dots on a Dot Map 175

Box 9.3 Mapping Derived and Absolute Values 175

9.3 Typography 176

9.3.1 Type Variations 176

9.3.2 Selection of Type Variations 177

9.3.3 Placement of Text in the Map
Body 177

Box 9.4 Options for Dynamic Labeling 179

9.4 Map Design 180

9.4.1 Layout 180

*Box 9.5 Wizards for Adding
Map Elements 183*

9.4.2 Visual Hierarchy 184

9.5 Map Production 185

Box 9.6 Working with Soft-Copy Maps 186

*Box 9.7 A Web Tool for Making Color
Maps 188*

Key Concepts and Terms 188

Review Questions 189

Applications: Data Display and Cartography 190

Task 1: Make a Choropleth Map 190

Task 2: Use Graduated Symbols, Line Symbols,
Highway Shield Symbols, and Text
Symbols 192

Task 3: Label Streams 195

Challenge Task 196

References 196

CHAPTER 10

DATA EXPLORATION 198

10.1 Data Exploration 199

10.1.1 Descriptive Statistics 199

Box 10.1 Data Visualization 199

10.1.2 Graphs 200

Box 10.2 Descriptive Statistics 200

10.1.3 Dynamic Graphics 203

10.2 Map-Based Data Manipulation 204

10.2.1 Data Classification 204

Box 10.3 Geovisualization 204

10.2.2 Spatial Aggregation 205

10.2.3 Map Comparison 205

10.3 Attribute Data Query 206

10.3.1 SQL (Structured Query Language) 207

Box 10.4 Query Methods in ArcGIS 207

10.3.2 Query Expressions 208

10.3.3 Type of Operation 209

10.3.4 Examples of Query Operations 210

10.3.5 Relational Database Query 210

10.4 Spatial Data Query 211

10.4.1 Feature Selection by Cursor 211

10.4.2 Feature Selection by Graphic 211

10.4.3 Feature Selection by Spatial Relationship 212

10.4.4 Combining Attribute and Spatial Data
Queries 212

*Box 10.5 Expressions of Spatial Relationships
in ArcMap 213*

10.5 Raster Data Query 213

10.5.1 Query by Cell Value 213

10.5.2 Query by Select Features 214

Key Concepts and Terms 214

Review Questions 215

Applications: Data Exploration 215

Task 1: Select Feature by Location 216

Task 2: Make Dynamic Chart 216

Task 3: Query Attribute Data from a Joint Attribute
Table 217

Task 4: Query Attribute Data from a Relational
Database 218

Task 5: Combine Spatial and Attribute Data
Queries 218

Task 6: Query Raster Data 219

Challenge Task 219

References 220

CHAPTER 11

VECTOR DATA ANALYSIS 222

- 11.1 Buffering 223
 - 11.1.1 Variations in Buffering 223
 - Box 11.1 Riparian Buffer Width* 224
 - 11.1.2 Applications of Buffering 225
 - 11.2 Overlay 225
 - 11.2.1 Feature Type and Overlay 226
 - 11.2.2 Overlay Methods 227
 - 11.2.3 Overlay of Shapefiles 228
 - 11.2.4 Slivers 228
 - Box 11.2 Overlay Methods in ArcGIS* 228
 - 11.2.5 Error Propagation in Overlay 230
 - 11.2.6 Applications of Overlay 230
 - Box 11.3 Error Propagation Models* 230
 - 11.3 Distance Measurement 231
 - Box 11.4 Distance Measurement Using ArcGIS* 232
 - 11.4 Pattern Analysis 232
 - 11.4.1 Point Pattern Analysis 232
 - 11.4.2 Moran's I for Measuring Spatial Autocorrelation 233
 - 11.4.3 G-Statistic for Measuring High/Low Clustering 235
 - 11.4.4 Applications of Pattern Analysis 236
 - 11.5 Feature Manipulation 237
 - Box 11.5 Feature Manipulation Using ArcGIS* 237
- Key Concepts and Terms 240
- Review Questions 241
- Applications: Vector Data Analysis 241
- Task 1: Perform Buffering and Overlay 242
 - Task 2: Overlay Multicomponent Polygons 243
 - Task 3: Measure Distances between Points and Lines 243
 - Task 4: Compute General and Local G-Statistics 244
- Challenge Task 244
- References 245

CHAPTER 12

RASTER DATA ANALYSIS 248

- 12.1 Data Analysis Environment 249
- 12.2 Local Operations 249

Box 12.1 How to Make an Analysis Mask 249

- 12.2.1 Local Operations with a Single Raster 250
 - 12.2.2 Reclassification 250
 - 12.2.3 Local Operations with Multiple Rasters 250
 - 12.2.4 Applications of Local Operations 252
 - Box 12.2 Local Operations in ArcGIS* 252
 - 12.3 Neighborhood Operations 253
 - 12.3.1 Neighborhood Statistics 253
 - Box 12.3 Neighborhood Operations in ArcGIS* 254
 - 12.3.2 Applications of Neighborhood Operations 254
 - 12.4 Zonal Operations 255
 - 12.4.1 Zonal Statistics 255
 - Box 12.4 More Examples of Neighborhood Operations* 256
 - 12.4.2 Applications of Zonal Operations 256
 - 12.5 Physical Distance Measure Operations 257
 - Box 12.5 Zonal Operations in ArcGIS* 257
 - 12.5.1 Allocation and Direction 258
 - 12.5.2 Applications of Physical Distance Measure Operations 258
 - Box 12.6 Distance Measure Operations in ArcGIS* 259
 - 12.6 Other Raster Data Operations 259
 - 12.6.1 Raster Data Management 259
 - 12.6.2 Raster Data Extraction 260
 - 12.6.3 Raster Data Generalization 260
 - 12.7 Comparison of Vector- and Raster-Based Data Analysis 261
 - 12.7.1 Overlay 261
 - 12.7.2 Buffering 262
- Key Concepts and Terms 262
- Review Questions 263
- Applications: Raster Data Analysis 263
- Task 1: Perform a Local Operation 264
 - Task 2: Perform a Combine Operation 264
 - Task 3: Perform a Neighborhood Operation 264
 - Task 4: Perform a Zonal Operation 265
 - Task 5: Measure Physical Distances 265
- Challenge Task 266
- References 266

CHAPTER 13

TERRAIN MAPPING AND ANALYSIS 268

- 13.1 Data for Terrain Mapping and Analysis 269
 - 13.1.1 DEM 269
 - 13.1.2 TIN 269
 - Box 13.1 Terrain Data Format* 270
- 13.2 Terrain Mapping 271
 - 13.2.1 Contouring 271
 - 13.2.2 Vertical Profiling 272
 - 13.2.3 Hill Shading 272
 - Box 13.2 The Pseudoscopic Effect* 273
 - Box 13.3 A Worked Example of Computing Relative Radiance* 273
 - 13.2.4 Hypsometric Tinting 274
 - 13.2.5 Perspective View 274
- 13.3 Slope and Aspect 276
 - 13.3.1 Computing Algorithms for Slope and Aspect Using Raster 277
 - Box 13.4 Conversion of D to Aspect* 278
 - 13.3.2 Computing Algorithms for Slope and Aspect Using TIN 278
 - Box 13.5 A Worked Example of Computing Slope and Aspect Using Raster* 279
 - 13.3.3 Factors Influencing Slope and Aspect Measures 279
 - Box 13.6 A Worked Example of Computing Slope and Aspect Using TIN* 280
- 13.4 Surface Curvature 281
 - Box 13.7 A Worked Example of Computing Surface Curvature* 282
- 13.5 Raster versus TIN 282
 - Box 13.8 Terrain Mapping and Analysis Using ArcGIS* 283
- Key Concepts and Terms 284
- Review Questions 284
- Applications: Terrain Mapping and Analysis 285
 - Task 1: Use DEM for Terrain Mapping 285
 - Task 2: Derive Slope, Aspect, and Curvature from DEM 287
 - Task 3: Build and Display a TIN 288
 - Challenge Task 288
- References 289

CHAPTER 14

VIEWSHEDS AND WATERSHEDS 291

- 14.1 Viewshed Analysis 292
 - 14.1.1 Line-of-Sight Operation 292
 - 14.1.2 Raster-Based Viewshed Analysis 293
 - 14.1.3 TIN-Based Viewshed Analysis 293
 - 14.1.4 Cumulative Viewshed 293
 - 14.1.5 Accuracy of Viewshed Analysis 293
- 14.2 Parameters of Viewshed Analysis 294
 - Box 14.1 Tools for Selecting Viewpoints* 295
 - Box 14.2 Parameters for Viewshed Analysis* 297
- 14.3 Applications of Viewshed Analysis 297
- 14.4 Watershed Analysis 297
 - Box 14.3 Watershed Boundary Dataset (WBD)* 298
 - 14.4.1 Filled DEM 298
 - 14.4.2 Flow Direction 298
 - 14.4.3 Flow Accumulation 299
 - 14.4.4 Stream Network 300
 - 14.4.5 Stream Links 301
 - 14.4.6 Areawide Watersheds 301
 - 14.4.7 Point-Based Watersheds 302
 - Box 14.4 Snapping Pour Points* 303
- 14.5 Factors Influencing Watershed Analysis 304
- 14.6 Applications of Watershed Analysis 305
- Key Concepts and Terms 306
- Review Questions 307
- Applications: Viewsheds and Watersheds 307
 - Task 1: Perform Viewshed Analysis 307
 - Task 2: Create a New Lookout Shapefile for Viewshed Analysis 308
 - Task 3: Delineate Areawide Watersheds 309
 - Task 4: Derive Upstream Contributing Areas at Pour Points 310
 - Challenge Task 311
- References 312

CHAPTER 15

SPATIAL INTERPOLATION 315

- 15.1 Elements of Spatial Interpolation 316
 - 15.1.1 Control Points 316
 - 15.1.2 Type of Spatial Interpolation 316

15.2 Global Methods	317
15.2.1 Trend Surface Models	317
<i>Box 15.1 A Worked Example of Trend Surface Analysis</i>	318
15.2.2 Regression Models	319
15.3 Local Methods	320
15.3.1 Thiessen Polygons	320
15.3.2 Density Estimation	321
<i>Box 15.2 A Worked Example of Kernel Density Estimation</i>	323
15.3.3 Inverse Distance Weighted Interpolation	323
15.3.4 Thin-Plate Splines	323
<i>Box 15.3 A Worked Example of Inverse Distance Weighted Estimation</i>	324
<i>Box 15.4 Radial Basis Functions</i>	325
15.4 Kriging	326
<i>Box 15.5 A Worked Example of Thin-Plate Splines with Tension</i>	326
15.4.1 Semivariogram	327
15.4.2 Models	329
15.4.3 Ordinary Kriging	330
15.4.4 Universal Kriging	331
<i>Box 15.6 A Worked Example of Ordinary Kriging Estimation</i>	332
15.4.5 Other Kriging Methods	333
<i>Box 15.7 A Worked Example of Universal Kriging Estimation</i>	334
15.5 Comparison of Spatial Interpolation Methods	334
<i>Box 15.8 Spatial Interpolation Using ArcGIS</i>	335
Key Concepts and Terms	336
Review Questions	337
Applications: Spatial Interpolation	338
Task 1: Use Trend Surface Model for Interpolation	338
Task 2: Use Kernel Density Estimation Method	339
Task 3: Use IDW for Interpolation	340
Task 4: Use Ordinary Kriging for Interpolation	341
Task 5: Use Universal Kriging for Interpolation	342
Challenge Task	342
References	343

CHAPTER 16

GEOCODING AND DYNAMIC SEGMENTATION 346

16.1 Geocoding	347
16.1.1 Geocoding Reference Database	347
16.1.2 The Address Matching Process	348
16.1.3 Address Matching Options	348
<i>Box 16.1 Scoring System for Geocoding</i>	349
16.1.4 Acceptable Matched Rate	350
16.1.5 Offset Plotting Options	350
16.2 Variations of Geocoding	350
16.3 Applications of Geocoding	351
16.3.1 Location-Based Services	351
16.3.2 Business Applications	351
16.3.3 Wireless Emergency Services	352
16.3.4 Crime Mapping and Analysis	352
16.3.5 Public Health	352
16.4 Dynamic Segmentation	352
16.4.1 Routes	352
<i>Box 16.2 Linear Location Referencing System</i>	353
16.4.2 Creating Routes	354
<i>Box 16.3 Route Feature Classes</i>	354
<i>Box 16.4 Create Routes Using ArcGIS</i>	355
16.4.3 Events	356
16.4.4 Creating Event Tables	356
16.5 Applications of Dynamic Segmentation	358
16.5.1 Data Management	358
16.5.2 Data Display	358
16.5.3 Data Query	358
16.5.4 Data Analysis	358
Key Concepts and Terms	359
Review Questions	360
Applications: Geocoding and Dynamic Segmentation	360
Task 1: Geocode Street Addresses	360
Task 2: Display and Query Routes and Events	361
Task 3: Analyze Two Event Layers	362
Task 4: Create a Stream Route and Analyze Slope along the Route	363
Task 5: Locate Cities along U.S. Interstate 5	364
Challenge Task	364
References	365

CHAPTER 17

PATH ANALYSIS AND NETWORK APPLICATIONS 367

- 17.1 Path Analysis 368
 - 17.1.1 Source Raster 368
 - 17.1.2 Cost Raster 368
 - 17.1.3 Cost Distance Measures 368
 - Box 17.1 Cost Raster for a Site Analysis of Pipelines* 368
 - 17.1.4 Deriving the Least Accumulative Cost Path 369
 - Box 17.2 Derivation of the Least Accumulative Cost Path* 371
 - 17.1.5 Improvements for Cost Distance Measures 372
 - Box 17.3 Cost Distance Measure Operations in ArcGIS* 372
- 17.2 Applications of Path Analysis 373
- 17.3 Network 373
 - 17.3.1 Link and Link Impedance 373
 - 17.3.2 Junction and Turn Impedance 373
 - 17.3.3 One-Way or Closed Streets 374
 - 17.3.4 Overpasses and Underpasses 374
- 17.4 Putting Together a Network 374
 - Box 17.4 Networks in ArcGIS* 375
 - 17.4.1 Gathering Linear Features 375
 - 17.4.2 Building Topology 375
 - 17.4.3 Attributing the Network Features 375
 - Box 17.5 Network Attributes* 376
 - Box 17.6 Turn Table and Turn Feature Class* 376
- 17.5 Network Applications 377
 - 17.5.1 Shortest Path Analysis 377
 - 17.5.2 Closest Facility 379
 - 17.5.3 Allocation 379
 - 17.5.4 Location-Allocation 381
 - 17.5.5 Urban Transportation Planning Model 383
 - Box 17.7 Network Analysis Using ArcGIS* 383
- Key Concepts and Terms 384
- Review Questions 384
- Applications: Path Analysis and Network Applications 385
 - Task 1: Compute the Least Accumulative Cost Distance 385
 - Task 2: Compute the Path Distance 386

- Task 3: Run Shortest Path Analysis 386
- Task 4: Build a Geodatabase Network Dataset 388
- Task 5: Find Closest Facility 389
- Task 6: Find Service Area 389
- Challenge Task 390
- References 390

CHAPTER 18

GIS MODELS AND MODELING 392

- 18.1 Basic Elements of GIS Modeling 393
 - 18.1.1 Classification of GIS Models 393
 - 18.1.2 The Modeling Process 393
 - 18.1.3 The Role of GIS in Modeling 394
 - 18.1.4 Integration of GIS and Other Modeling Programs 395
- 18.2 Binary Models 395
- 18.3 Index Models 396
 - 18.3.1 The Weighted Linear Combination Method 396
 - Box 18.1 The Conservation Reserve Program* 397
 - Box 18.2 Geoprocessing Tools in ArcGIS* 399
 - 18.3.2 Other Index Methods 400
 - 18.3.3 Applications of the Index Model 401
- 18.4 Regression Models 402
 - 18.4.1 Linear Regression Models 402
 - 18.4.2 Logistic Regression Models 402
- 18.5 Process Models 403
 - 18.5.1 Soil Erosion Models 403
 - Box 18.3 Explanation of the Six Factors in RUSLE* 405
 - 18.5.2 Other Examples of Environmental Models 405
 - Box 18.4 Looping in ArcGIS* 406
 - 18.5.3 GIS and Process Models 406
- Key Concepts and Terms 407
- Review Questions 407
- Applications: GIS Models and Modeling 408
 - Task 1: Build a Vector-Based Binary Model 408
 - Task 2: Build a Raster-Based Binary Model 409
 - Task 3: Build a Vector-Based Index Model 409
 - Task 4: Build a Raster-Based Index Model 411
 - Challenge Task 413
- References 413
- Index 419