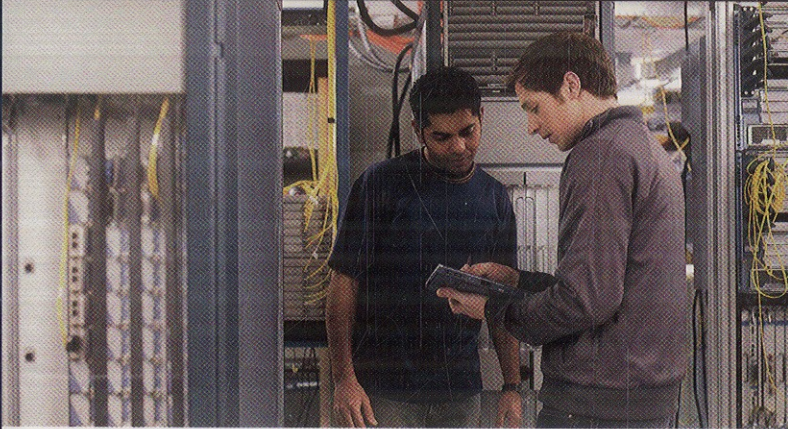




CCNA Learning



Authorized Self-Study Guide Interconnecting Cisco Network Devices, Part 1 (ICND1)

Second Edition

Foundation learning for CCENT/CCNA ICND1 Exam 640-822

Contents

	Foreword	xxii
	Introduction	xxiii
Chapter 1	Building a Simple Network	3
	Chapter Objectives	3
	Exploring the Functions of Networking	3
	<i>What Is a Network?</i>	4
	<i>Common Physical Components of a Network</i>	5
	<i>Interpreting a Network Diagram</i>	6
	<i>Resource-Sharing Functions and Benefits</i>	7
	<i>Network User Applications</i>	9
	<i>The Impact of User Applications on the Network</i>	10
	<i>Characteristics of a Network</i>	11
	<i>Physical Versus Logical Topologies</i>	12
	<i>Physical Topologies</i>	12
	<i>Logical Topologies</i>	13
	<i>Bus Topology</i>	14
	<i>Star and Extended-Star Topologies</i>	15
	<i>Star Topology</i>	15
	<i>Extended-Star Topology</i>	15
	<i>Ring Topologies</i>	17
	<i>Single-Ring Topology</i>	17
	<i>Dual-Ring Topology</i>	18
	<i>Mesh and Partial-Mesh Topologies</i>	18
	<i>Full-Mesh Topology</i>	18
	<i>Partial-Mesh Topology</i>	19
	<i>Connection to the Internet</i>	20
	<i>Summary of Exploring the Functions of Networking</i>	21
	Securing the Network	21
	<i>Need for Network Security</i>	22
	<i>Balancing Network Security Requirements</i>	25
	<i>Adversaries, Hacker Motivations, and Classes of Attack</i>	26
	<i>Classes of Attack</i>	27
	<i>Mitigating Common Threats</i>	28
	<i>Physical Installations</i>	28
	<i>Reconnaissance Attacks</i>	29
	<i>Access Attacks</i>	30
	<i>Password Attacks</i>	30
	<i>Summary of Securing the Network</i>	31
	<i>References</i>	31
	Understanding the Host-to-Host Communications Model	31
	<i>OSI Reference Model</i>	32
	<i>Layer 7: The Application Layer</i>	34

<i>Layer 6: The Presentation Layer</i>	34
<i>Layer 5: The Session Layer</i>	35
<i>Layer 4: The Transport Layer</i>	35
<i>Layer 3: The Network Layer</i>	35
<i>Layer 2: The Data Link Layer</i>	35
<i>Layer 1: The Physical Layer</i>	36
<i>Data Communications Process</i>	36
<i>Encapsulation</i>	37
<i>De-Encapsulation</i>	38
<i>Peer-to-Peer Communication</i>	39
<i>The TCP/IP Protocol Stack</i>	40
<i>OSI Model Versus TCP/IP Stack</i>	41
<i>Summary of Understanding the Host-to-Host Communications Model</i>	42
Understanding TCP/IP's Internet Layer	43
IP Network Addressing	44
<i>IP Address Classes</i>	46
<i>Network and Broadcast Addresses</i>	49
<i>Public and Private IP Addresses</i>	53
<i>Address Exhaustion</i>	54
<i>Dynamic Host Configuration Protocol</i>	58
<i>Domain Name System</i>	58
<i>Using Common Host Tools to Determine the IP Address of a Host</i>	59
<i>Summary of TCP/IP's Internet Layer</i>	62
Understanding TCP/IP's Transport and Application Layers	63
<i>The Transport Layer</i>	63
<i>TCP/IP Applications</i>	67
<i>Transport Layer Functionality</i>	67
<i>TCP/UDP Header Format</i>	69
<i>How TCP and UDP Use Port Numbers</i>	72
<i>Establishing a TCP Connection: The Three-Way Handshake</i>	74
<i>Session Multiplexing</i>	77
<i>Segmentation</i>	78
<i>Flow Control for TCP/UDP</i>	78
<i>Acknowledgment</i>	79
<i>Windowing</i>	80
<i>Fixed Windowing</i>	80
<i>Example: Throwing a Ball</i>	80
<i>TCP Sliding Windowing</i>	82
<i>Maximize Throughput</i>	83
<i>Global Synchronization</i>	83
<i>Summary of Understanding TCP/IP's Transport and Application Layers</i>	83
Exploring the Packet Delivery Process	84
<i>Layer 1 Devices and Their Functions</i>	84
<i>Layer 2 Devices and Their Functions</i>	85

Layer 2 Addressing	86
Layer 3 Devices and Their Functions	86
Layer 3 Addressing	86
Mapping Layer 2 Addressing to Layer 3 Addressing	87
ARP Table	88
Host-to-Host Packet Delivery	89
Function of the Default Gateway	98
Using Common Host Tools to Determine the Path Between Two Hosts Across a Network	99
Summary of Exploring the Packet Delivery Process	103
Understanding Ethernet	104
The Definition of a LAN	104
Components of a LAN	105
Functions of a LAN	106
How Big Is a LAN?	107
Ethernet	108
Ethernet LAN Standards	108
LLC Sublayer	109
MAC Sublayer	109
The Role of CSMA/CD in Ethernet	109
Ethernet Frames	111
Ethernet Frame Addressing	112
Ethernet Addresses	113
MAC Addresses and Binary-Hexadecimal Numbers	113
Summary of Understanding Ethernet	114
Connecting to an Ethernet LAN	115
Ethernet Network Interface Cards	115
Ethernet Media and Connection Requirements	116
Connection Media	116
Unshielded Twisted-Pair Cable	118
UTP Implementation	119
Summary of Connecting to an Ethernet LAN	124
Chapter Summary	124
Review Questions	125

Chapter 2 Ethernet LANs 139

Chapter Objectives	139
Understanding the Challenges of Shared LANs	139
Ethernet LAN Segments	140
Extending a LAN Segment	141
Collisions	141
Collision Domains	142
Summary of Ethernet Local-Area Networks	144
Exploring the Packet Delivery Process	144
Layer 2 Addressing	144

<i>Layer 3 Addressing</i>	145
<i>Host-to-Host Packet Delivery</i>	145
<i>Summary of Exploring the Packet Delivery Process</i>	150
Operating Cisco IOS Software	151
<i>Cisco IOS Software Features and Functions</i>	151
<i>Configuring Network Devices</i>	152
<i>External Configuration Sources</i>	153
<i>Cisco IOS Command-Line Interface Functions</i>	154
<i>Entering the EXEC Modes</i>	155
<i>Keyboard Help in the CLI</i>	156
<i>Enhanced Editing Commands</i>	159
<i>Command History</i>	160
<i>Summary of Operating Cisco IOS Software</i>	162
Starting a Switch	163
<i>Physical Startup of the Catalyst Switch</i>	163
<i>Switch LED Indicators</i>	164
<i>Viewing Initial Bootup Output from the Switch</i>	166
<i>Logging In to the Switch</i>	168
<i>Configuring a Switch from the Command Line</i>	169
<i>Showing the Switch Initial Startup Status</i>	170
<i>MAC Address Table Management</i>	173
<i>Summary of Starting a Switch</i>	174
Understanding Switch Security	174
<i>Physical and Environmental Threats</i>	175
<i>Configuring Password Security</i>	175
<i>Configuring the Login Banner</i>	177
<i>Telnet Versus SSH Access</i>	178
<i>Port Security Configuration</i>	178
<i>Securing Unused Ports</i>	182
<i>Summary of Understanding Switch Security</i>	182
Maximizing the Benefits of Switching	182
<i>Microsegmentation</i>	182
<i>Example: Getting a Dedicated On-Ramp</i>	183
<i>Duplex Communication</i>	183
<i>Full-Duplex Communication</i>	185
<i>Example: Data Conversations</i>	185
<i>Duplex Interface Configuration</i>	185
<i>Example: Showing Duplex Options</i>	186
<i>Need for Different Media Rates in an Enterprise Network</i>	187
<i>Physical Redundancy in an Ethernet LAN</i>	187
<i>Example: Loops in a Switched Network</i>	189
<i>Loop Resolution with Spanning Tree Protocol (STP)</i>	190
<i>Summary of Maximizing the Benefits of Switching</i>	191
Troubleshooting Switch Issues	191

	<i>Using a Layered Approach</i>	192
	<i>Identifying and Resolving Media Issues</i>	192
	<i>Identifying and Resolving Common Access Port Issues</i>	194
	<i>Identifying and Resolving Common Configuration Issues</i>	194
	<i>Summary of Troubleshooting Switch Issues</i>	194
	Chapter Summary	195
	Review Questions	195
Chapter 3	Wireless LANs	207
	Chapter Objectives	207
	Exploring Wireless Networking	207
	<i>The Business Case for WLAN Service</i>	207
	<i>Differences Between WLANs and LANs</i>	209
	<i>Radio Frequency Transmission</i>	210
	<i>Organizations That Standardize WLANs</i>	210
	<i>ITU-R Local FCC Wireless</i>	211
	<i>802.11 Standards Comparison</i>	213
	<i>Wi-Fi Certification</i>	214
	<i>Summary of Exploring Wireless Networking</i>	215
	Understanding WLAN Security	215
	<i>Wireless LAN Security Threats</i>	215
	<i>Mitigating Security Threats</i>	216
	<i>Evolution of Wireless LAN Security</i>	217
	<i>Wireless Client Association</i>	218
	<i>How 802.1x Works on WLANs</i>	219
	<i>WPA and WPA2 Modes</i>	220
	<i>Enterprise Mode</i>	220
	<i>Personal Mode</i>	221
	<i>Summary of Understanding WLAN Security</i>	221
	Implementing a WLAN	221
	<i>802.11 Topology Building Blocks</i>	222
	<i>BSA Wireless Topology</i>	223
	<i>Wireless Topology Data Rates</i>	224
	<i>Access Point Configuration</i>	226
	<i>Steps to Implement a Wireless Network</i>	227
	<i>Wireless Clients</i>	227
	<i>Wireless Troubleshooting</i>	228
	<i>Summary of Implementing a WLAN</i>	229
	Chapter Summary	230
	Review Questions	230
Chapter 4	LAN Connections	237
	Chapter Objectives	237
	Exploring the Functions of Routing	238

<i>Routers</i>	238
<i>Path Determination</i>	239
<i>Routing Tables</i>	240
<i>Routing Table Information</i>	241
<i>Routing Update Messages</i>	241
<i>Static, Dynamic, Directly Connected, and Default Routes</i>	242
<i>Dynamic Routing Protocols</i>	242
<i>Routing Metrics</i>	243
<i>Routing Methods</i>	244
<i>Summary of Exploring the Functions of Routing</i>	246
Understanding Binary Numbering	246
<i>Decimal and Binary Systems</i>	247
<i>Least Significant Bit and Most Significant Bit</i>	248
<i>Base 2 Conversion System</i>	249
<i>Powers of 2</i>	249
<i>Decimal-to-Binary Conversion</i>	250
<i>Binary-to-Decimal Conversion</i>	251
<i>Summary of Understanding Binary Numbering</i>	252
Constructing a Network Addressing Scheme	252
<i>Subnetworks</i>	252
<i>Two-Level and Three-Level Addresses</i>	254
<i>Subnet Creation</i>	254
<i>Computing Usable Subnetworks and Hosts</i>	255
<i>Computing Hosts for a Class C Subnetwork</i>	255
<i>Computing Hosts for a Class B Subnetwork</i>	256
<i>Computing Hosts for a Class A Subnetwork</i>	257
<i>How End Systems Use Subnet Masks</i>	258
<i>How Routers Use Subnet Masks</i>	259
<i>Mechanics of Subnet Mask Operation</i>	261
<i>Applying Subnet Mask Operation</i>	263
<i>Determining the Network Addressing Scheme</i>	264
<i>Class C Example</i>	265
<i>Class B Example</i>	267
<i>Class A Example</i>	268
<i>Summary of Constructing a Network Addressing Scheme</i>	270
Starting a Cisco Router	271
<i>Initial Startup of a Cisco Router</i>	271
<i>Initial Setup of a Cisco Router</i>	272
<i>Logging In to the Cisco Router</i>	279
<i>Showing the Router Initial Startup Status</i>	282
<i>Summary of Starting a Cisco Router</i>	283
Configuring a Cisco Router	283
<i>Cisco Router Configuration Modes</i>	283

<i>Configuring a Cisco Router from the CLI</i>	285
<i>Configuring Cisco Router Interfaces</i>	287
<i>Configuring the Cisco Router IP Address</i>	288
<i>Verifying the Interface Configuration</i>	289
<i>Summary of Configuring a Cisco Router</i>	294
Exploring the Packet Delivery Process	295
<i>Layer 2 Addressing</i>	295
<i>Layer 3 Addressing</i>	295
<i>Host-to-Host Packet Delivery</i>	295
<i>Using the show ip arp Command</i>	302
<i>Using Common Cisco IOS Tools</i>	304
<i>Summary of Exploring the Packet Delivery Process</i>	305
Understanding Cisco Router Security	305
<i>Physical and Environmental Threats</i>	306
<i>Configuring Password Security</i>	306
<i>Configuring the Login Banner</i>	307
<i>Telnet and SSH Access</i>	307
<i>Summary of Understanding Cisco Router Security</i>	308
Using the Cisco SDM	309
<i>Cisco SDM Overview</i>	309
<i>Configuring Your Router to Support Cisco SDM</i>	311
<i>Start Cisco SDM</i>	312
<i>More Link</i>	314
<i>Configuration Overview</i>	314
<i>Cisco SDM Wizards</i>	316
<i>Summary of Using the Cisco SDM</i>	317
Using a Cisco Router as a DHCP Server	317
<i>Understanding DHCP</i>	318
<i>DHCPDISCOVER</i>	318
<i>DHCPOFFER</i>	318
<i>DHCPREQUEST</i>	318
<i>DHCPACK</i>	319
<i>Using a Cisco Router as a DHCP Server</i>	319
<i>Using Cisco SDM to Enable the DHCP Server Function</i>	319
<i>Monitoring DHCP Server Functions</i>	321
<i>Summary Using a Cisco Router as a DHCP Server</i>	323
Accessing Remote Devices	323
<i>Establishing a Telnet or SSH Connection</i>	323
<i>Telnet</i>	323
<i>SSH</i>	324
<i>Suspending and Resuming a Telnet Session</i>	325
<i>Closing a Telnet Session</i>	326
<i>Alternate Connectivity Tests</i>	327
<i>Summary of Accessing Remote Devices</i>	329

Chapter Summary 329

Review Questions 330

Chapter 5 WAN Connections 345

Chapter Objectives 345

Understanding WAN Technologies 346

What Is a WAN? 346

Why Are WANs Necessary? 348

How Is a WAN Different from a LAN? 348

WAN Access and the OSI Reference Model 350

WAN Devices 350

WAN Cabling 351

The Role of Routers in WANs 353

WAN Data Link Layer Protocols 354

WAN Communication Link Options 355

Summary of Understanding WAN Technologies 356

Enabling the Internet Connection 356

Packet-Switched Communication Links 357

Digital Subscriber Line 358

DSL Types and Standards 359

Cable 360

Global Internet: The Largest WAN 361

Obtaining an Interface Address from a DHCP Server 362

Introducing NAT and PAT 363

Translating Inside Source Addresses 365

Example: Translating Inside Source Addresses 366

Example: Overloading an Inside Global Address 367

Configuring the DHCP Client and PAT 368

Verifying the DHCP Client Configuration 372

Verifying the NAT and PAT Configuration 373

Summary of Enabling the Internet Connection 373

Enabling Static Routing 374

Routing Overview 374

Static and Dynamic Route Comparison 376

Static Route Configuration 376

Example: Understanding Static Routes 376

Example: Configuring Static Routes 378

Default Route Forwarding Configuration 378

Static Route Configuration Verification 379

Summary of Enabling Static Routing 380

Configuring Serial Encapsulation 380

Circuit-Switched Communication Links 381

Public Switched Telephone Network 382

Point-to-Point Communication Links 383

<i>Bandwidth</i>	383
<i>Point-to-Point Communication Considerations</i>	385
<i>High-Level Data Link Control Protocol</i>	386
<i>Configuring HDLC Encapsulation</i>	386
<i>Point-to-Point Protocol</i>	387
<i>PPP Layered Architecture</i>	388
<i>Example: PPP Configuration</i>	389
<i>Serial Encapsulation Configuration Verification</i>	390
<i>Frame Relay</i>	391
<i>ATM and Cell Switching</i>	392
<i>Summary of Configuring Serial Encapsulation</i>	394
Enabling RIP	394
<i>Dynamic Routing Protocol Overview</i>	395
<i>Features of Dynamic Routing Protocols</i>	397
<i>Example: Administrative Distance</i>	397
<i>Classful Routing Versus Classless Routing Protocols</i>	398
<i>Distance Vector Route Selection</i>	399
<i>Example: Distance Vector Routing Protocols</i>	400
<i>Example: Sources of Information and Discovering Routes</i>	401
<i>RIP Features</i>	401
<i>RIPv1 and RIPv2 Comparison</i>	402
<i>Dynamic Routing Configuration Tasks</i>	403
<i>RIP Configuration</i>	403
<i>RIP Configuration Verification</i>	404
<i>RIP Configuration Troubleshooting</i>	407
<i>Example: debug ip rip Command</i>	407
<i>Summary of Enabling RIP</i>	407
Chapter Summary	408
Review Questions	409

Chapter 6 Network Environment Management 425

Chapter Objectives	425
Discovering Neighbors on the Network	425
<i>Cisco Discovery Protocol</i>	425
<i>Information Obtained with CDP</i>	426
<i>Implementation of Cisco Discovery Protocol</i>	428
<i>Using the show cdp neighbors Command</i>	428
<i>Monitoring and Maintaining Cisco Discovery Protocol</i>	430
<i>Creating a Network Map of the Environment</i>	432
<i>Summary of Discovering Neighbors on the Network</i>	433
Managing Cisco Router Startup and Configuration	433
<i>Stages of the Router Power-On Boot Sequence</i>	433
<i>Internal Router Components</i>	434
<i>How a Device Locates and Loads Cisco IOS Image and Configuration Files</i>	437

<i>Configuration Register</i>	439
<i>Summary of Managing Cisco Router Startup and Configuration</i>	442
Managing Cisco Devices	442
<i>Cisco IOS File System and Devices</i>	443
<i>Managing Cisco IOS Images</i>	445
<i>Managing Device Configuration Files</i>	448
<i>Cisco IOS copy Command</i>	449
<i>Using show and debug Commands on Cisco Devices</i>	452
<i>Summary of Managing Cisco Devices</i>	455
Chapter Summary	455
Review Questions	456

Appendix	Answers to Chapter Review Questions	465
	Chapter 1	465
	Chapter 2	468
	Chapter 3	471
	Chapter 4	472
	Chapter 5	475
	Chapter 6	478

Index	480
--------------	------------