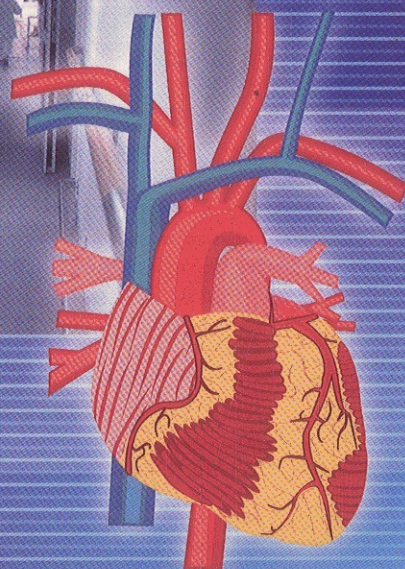
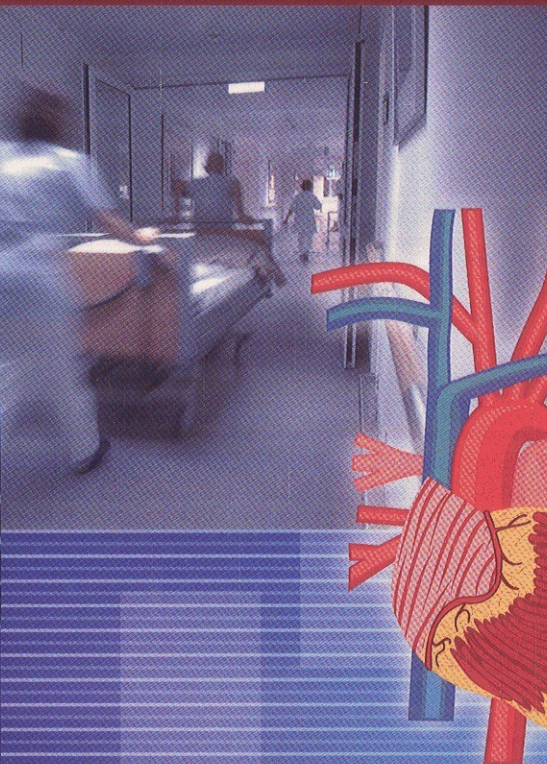
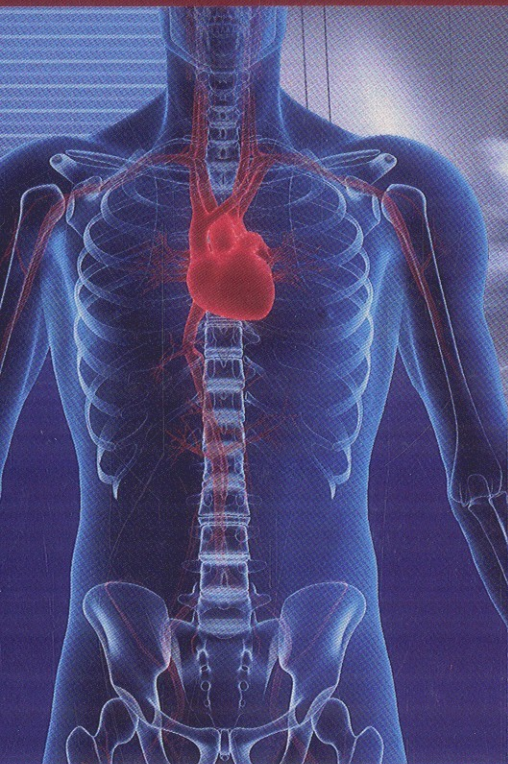


Acute Cardiac Care

a practical guide for nurses

edited by Angela M. Kucia & Tom Quinn



Contents

Contributors	vii		
Foreword	ix		
Preface	xi		
1 Mechanics of the Cardiovascular System	1		
<i>B. Greaney & A.M. Kucia</i>			
Overview	1		
Basic heart anatomy	1		
The cardiac cycle	2		
Cardiac output	6		
Conclusion	7		
2 Regulation of Cardiac and Vascular Function	8		
<i>B. Greaney & A.M. Kucia</i>			
Overview	8		
Central nervous system regulation of the cardiovascular system	8		
Vasomotor control	9		
Baroreceptors	10		
Chemoreceptors	10		
Humoral control	11		
Electrolytes	13		
Conclusion	13		
3 Cardiac Electrophysiology	15		
<i>B. Greaney & A.M. Kucia</i>			
Overview	15		
Cardiac cells	15		
		The action potential	16
		The action potential in non-pacemaker cells	17
		The cardiac conduction system	18
		The electrocardiogram	20
		Conclusion	20
		4 The Coronary Circulation	21
		<i>B. Greaney & A.M. Kucia</i>	
		Overview	21
		The coronary circulation	21
		The left main coronary artery	22
		The LAD artery	23
		The LCX or CX artery	23
		The right coronary artery	23
		Collateral circulation	23
		Microvascular circulation	24
		Coronary venous circulation	24
		5 Risk Factors for Cardiovascular Disease	26
		<i>A.M. Kucia & E. Birchmore</i>	
		Overview	26
		Classification of risk factors for CVD	26
		Biomedical risk factors	27
		Behavioural risk factors	32
		Psychosocial risk factors	34
		Conclusion	35

6 Populations at Risk	39	Theoretical basis of electrocardiography	83
<i>T. Wachtel, R. Webster & J. Smith</i>		Determining the cardiac axis	85
Overview	39	Determination of heart rate and electrocardiographic intervals	86
Risk factors for CVD	39	Chamber enlargement	88
Clarifying risk	40	Bundle branch block	88
Risk assessment tools	40	ECG changes related to myocardial ischaemia and infarction	91
Populations at increased risk	41	Obtaining a 12-lead ECG	94
Targeting treatment	45	Conclusion	97
Using what we know	46		
Conclusion	46		
		11 Cardiac Monitoring	99
7 Evidence-Based Practice	50	<i>A.M. Kucia & C. Oldroyd</i>	
<i>D. Evans & T. Quinn</i>		Overview	99
Overview	50	ECG monitoring systems and lead <i>formats</i>	100
The need for change	50	Indications for arrhythmia monitoring	103
Evidence-based practice	51	Nursing considerations in the care of the patient with ECG monitoring	103
Barriers to the evidence	56		
Conclusion	57		
		12 Laboratory Tests	109
8 Ethics of Research in Acute Cardiac Care	59	<i>D. Barrett, L. Jesuthasan & A.M. Kucia</i>	
<i>B.F. Williams & A.M. Kucia</i>		Overview	109
Overview	59	Generic laboratory tests	109
Evidence-based medicine and clinical trials	60	Electrolytes	110
Informed consent for trial participation	60	Renal function	110
<i>What is an ethical dilemma?</i>	62	Glucose measurement	111
Genetic research	63	Lipid profiles	111
Considering an offer for the unit to participate in a clinical trial	63	Complete blood examination	111
Ethical issues in marketing and pricing of new pharmaceutical agents	64	Clotting screen	112
Conclusion	64	Biochemical markers	112
		<i>Markers of myocardial necrosis</i>	112
		Cardiac natriuretic peptides	113
		C-reactive protein	114
		Conclusion	114
9 Cardiovascular Assessment	67		
<i>A.M. Kucia & S.A. Unger</i>		13 Diagnostic Procedures	116
Overview	67	<i>L. Belz, K. Mishra, S.A. Unger & A.M. Kucia</i>	
Health history	67	Overview	116
Physical examination	70	Chest X-ray	116
Conclusion	79	Cardiac catheterisation (angiogram)	118
		Echocardiography	124
10 Electrocardiogram Interpretation	81	Stress testing	125
<i>A.M. Kucia & C. Oldroyd</i>		Magnetic resonance imaging	130
Overview	81	Computerised tomography	132
Normal sequence of depolarisation and repolarisation	81	Electrophysiology studies	132
		Conclusion	133

14 Sudden Cardiac Death	137	Vasoconstriction	164
<i>T. Quinn & P. Gregory</i>		Conclusion	164
Overview	137		
Definitions	138	18 Presentations of Acute Coronary Syndromes	167
Burden of disease and risk factors for SCD	138	<i>A.M. Kucia & J.F. Beltrame</i>	
Sudden death in the young (including athletes)	139	Overview	167
Structural abnormalities	140	Angina pectoris	167
Cardiomyopathies and SCD	141	Stable angina	168
Genetic syndromes and SCD	141	The acute coronary syndromes	168
Conclusion	143	Global trends in ACS presentations	170
		Clinical history in ACS	170
15 Out-of-Hospital Cardiac Arrest and Automated External Defibrillation	145	Physical examination in ACS patients	172
<i>P. Gregory & T. Quinn</i>		The 12-lead electrocardiogram in ACS	173
Overview	145	Cardiac markers in ACS	174
Out-of-hospital cardiac arrest	146	Clinical assessment and risk stratification in ACS	174
Hazards to the victim and rescuer	146	Conclusion	175
Recognition of cardiac arrest and BLS	147		
Automated external defibrillation	149	19 Risk Stratification in Acute Coronary Syndromes	178
Conclusion	150	<i>A. Day, C. Ryan & T. Quinn</i>	
		Overview	178
16 Ethical Issues in Resuscitation	152	Introduction	178
<i>A.M. Kucia & B.F. Williams</i>		Risk stratification	179
Overview	152	Risk stratification guidelines	180
Guiding ethical principles in resuscitation	152	Risk scores	181
Futility	153	Chest pain units	182
Rights of the individual versus the needs of society	153	Conclusion	183
Patient perceptions of resuscitation	154		
Introducing the DNR conversation	154	20 Reducing Time to Treatment	185
Witnessed resuscitation	154	<i>T. Quinn & A. Day</i>	
Withdrawal of treatment	156	Overview	185
Organ donation	157	Benefits of early reperfusion	185
Training and research with the newly dead	157	Identifying and addressing delays	186
		Conclusion	190
17 Pathogenesis of Acute Coronary Syndromes	161		
<i>A.M. Kucia & J.D. Horowitz</i>		21 Reperfusion Strategies	193
Overview	161	<i>C.J. Zeitz & T. Quinn</i>	
Acute coronary syndrome	162	Overview	193
Atherosclerosis	162	Pathogenesis of STEMI	193
Endothelial dysfunction	162	Principles of reperfusion strategies	194
Plaque disruption	162	Options for reperfusion	194
Inflammation	163	Strategies for reducing treatment time delays	199
Thrombosis	164	Detecting and managing failed reperfusion	199
		Preventing and detecting re-occlusion	200
		Conclusion	201

22	Adjunct Pharmacological Agents in Acute Coronary Syndromes	204	Management specifics	261
	<i>A.M. Kucia & J.D. Horowitz</i>		Refractory AHF	264
	Overview	204	Dignity, communication and preventing complications: 'back to basics'	265
	Anti-ischæmic therapies	205	Managing chronic heart failure better to reduce the need for re-hospitalisation	266
	Antiplatelet and anticoagulant therapy	209	Conclusion	266
	Inhibitors of the renin-angiotensin-aldosterone system	215		
	Statins	216	26 Convalescence	269
	Conclusion	216	<i>P. Davidson & R. Webster</i>	
23	Arrhythmias	222	Overview	269
	<i>C. Oldroyd & A.M. Kucia</i>		Introduction	270
	Overview	222	Assessment and identification of patient needs	272
	Basic electrophysiology	223	High risk groups	272
	Mechanisms of arrhythmia generations	223	Promoting self-management in the convalescent phase	272
	Cardiac monitoring	225	<i>Particular concerns of spouses and family members</i>	273
	Rhythm interpretation	225	Accommodating convalescence and discharge planning following an acute cardiac event	274
	Determining the rhythm	227	Models of intervention to facilitate convalescence and secondary prevention	274
	Tachyarrhythmias	232	Nursing strategies to promote convalescence	275
	Asystole	238	Palliative care	276
	Treatment of arrhythmias	239	Conclusion	276
	Conclusion	241		
24	In-Hospital Resuscitation	243	27 Discharge Planning and Secondary Prevention	280
	<i>C. Oldroyd, T. Quinn & P. Whiston</i>		<i>R. Webster & P. Davidson</i>	
	Overview	243	Overview	280
	Introduction	244	Discharge planning	280
	Prevention: systems for identifying patients at risk of cardiac arrest	245	Secondary prevention	281
	Early recognition and management of critically ill patients	246	Provision of secondary prevention	282
	In-hospital resuscitation	248	Components of secondary prevention	283
	Working within your scope of practice	250	Cardio-protective drug therapy	289
	Audit and data collection	253	Challenges in secondary prevention	290
	Conclusion	253	Conclusion	291
25	Acute Heart Failure	257		
	<i>T. Quinn</i>		Index	297
	Overview	257		
	Introduction	257		
	Establishing the diagnosis	258		