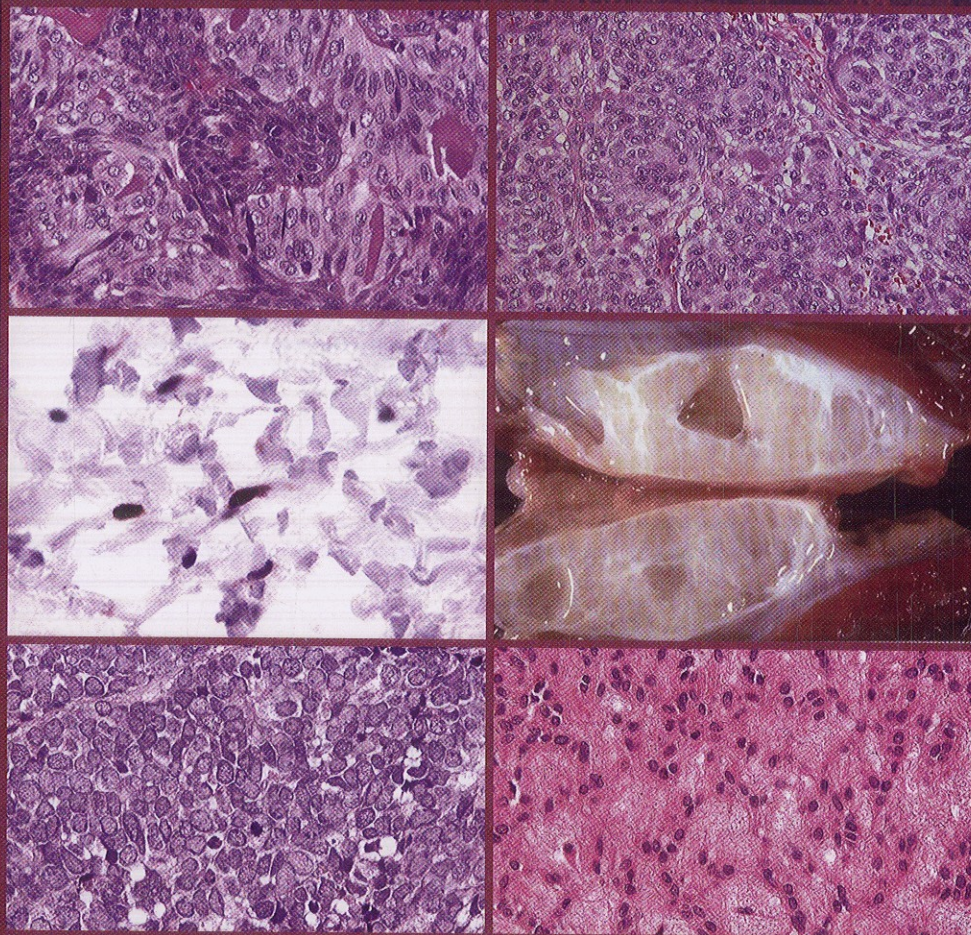


# MODERN SOFT TISSUE PATHOLOGY

Tumors and Non-Neoplastic Conditions



edited by

**MARKKU MIETTINEN**

CAMBRIDGE

Medicine



# Contents

CONTRIBUTORS vii

PREFACE ix

*Chap. 1. OVERVIEW OF SOFT TISSUE  
TUMORS 1*

*Markku Miettinen*

*Chap. 2. RADIOLOGIC EVALUATION OF SOFT  
TISSUE TUMORS 11*

*Mark D. Murphey and Mark J. Kransdorf*

*Chap. 3. IMMUNOHISTOCHEMISTRY OF SOFT  
TISSUE TUMORS 44*

*Markku Miettinen*

*Chap. 4. GENETICS OF SOFT TISSUE  
TUMORS 105*

*Julia A. Bridge and Marilu Nelson*

*Chap. 5. MOLECULAR GENETICS OF SOFT  
TISSUE TUMORS 127*

*Jerzy Lasota*

*Chap. 6. FIBROBLAST BIOLOGY, FASCIITIS,  
RETROPERITONEAL FIBROSIS, AND  
KELOIDS 181*

*Markku Miettinen*

*Chap. 7. FIBROMAS AND BENIGN FIBROUS  
HISTIOCYTOMAS 207*

*Markku Miettinen*

*Chap. 8. FIBROMATOSSES 238*

*Markku Miettinen*

*Chap. 9. BENIGN FIBROBLASTIC AND  
MYOFIBROBLASTIC PROLIFERATIONS  
IN CHILDREN 255*

*Markku Miettinen*

*Chap. 10. CHILDHOOD FIBROBLASTIC  
AND MYOFIBROBLASTIC  
PROLIFERATIONS OF VARIABLE  
BIOLOGIC POTENTIAL 285*

*Markku Miettinen*

*Chap. 11. MYXOMAS AND OSSIFYING  
FIBROMYXOID TUMOR 308*

*Markku Miettinen*

*Chap. 12. SOLITARY FIBROUS TUMOR,  
HEMANGIOPERICYTOMA, AND RELATED  
TUMORS 335*

*Markku Miettinen*

*Chap. 13. FIBROBLASTIC AND  
MYOFIBROBLASTIC NEOPLASMS  
WITH MALIGNANT POTENTIAL 348*

*Markku Miettinen*

*Chap. 14. LIPOMA VARIANTS AND  
CONDITIONS SIMULATING LIPOMATOUS  
TUMORS 393*

*Markku Miettinen*

*Chap. 15. ATYPICAL LIPOMATOUS TUMOR  
AND LIPOSARCOMAS 432*

*Markku Miettinen*

*Chap. 16. SMOOTH MUSCLE TUMORS 460*

*Markku Miettinen*

*Chap. 17. GASTROINTESTINAL STROMAL TUMOR 491*

*Markku Miettinen*

*Chap. 18. STROMAL TUMORS AND TUMOR-LIKE LESIONS OF THE FEMALE GENITAL TRACT 508*

*Markku Miettinen*

*Chap. 19. ANGIOMYOLIPOMA AND RELATED TUMORS (PERIVASCULAR EPITHELIOID CELL TUMORS) 531*

*Markku Miettinen*

*Chap. 20. RHABDOMYOMAS AND RHABDOMYOSARCOMAS 546*

*Vinay Prasad, Kadria Sayed, Faridali Ramji, and David M. Parham*

*Chap. 21. HEMANGIOMAS, LYMPHANGIOMAS, AND REACTIVE VASCULAR PROLIFERATIONS 574*

*Markku Miettinen*

*Chap. 22. HEMANGIOENDOTHELIOMAS, ANGIOSARCOMAS, AND KAPOSÍ S SARCOMA 617*

*Markku Miettinen*

*Chap. 23. GLOMUS TUMOR, SINONASAL HEMANGIOPERICYTOMA, AND MYOPERICYTOMA 648*

*Markku Miettinen*

*Chap. 24. NERVE SHEATH TUMORS 660*

*Markku Miettinen*

*Chap. 25. NEUROECTODERMAL TUMORS: MELANOCYTIC, GLIAL, AND MENINGEAL NEOPLASMS 724*

*Markku Miettinen*

*Chap. 26. PARAGANGLIOMAS 755*

*Markku Miettinen*

*Chap. 27. PRIMARY SOFT TISSUE TUMORS WITH EPITHELIAL DIFFERENTIATION 777*

*Markku Miettinen*

*Chap. 28. MALIGNANT MESOTHELIOMA AND OTHER MESOTHELIAL PROLIFERATIONS 811*

*Markku Miettinen*

*Chap. 29. MERKEL CELL CARCINOMA AND METASTATIC AND SARCOMATOID CARCINOMAS INVOLVING SOFT TISSUE 834*

*Markku Miettinen*

*Chap. 30. CARTILAGE- AND BONE-FORMING TUMORS AND TUMOR-LIKE LESIONS 862*

*Julie C. Fanburg-Smith and Mark D. Murphy*

*Chap. 31. SMALL ROUND CELL TUMORS 896*

*David M. Parham*

*Chap. 32. ALVEOLAR SOFT PART SARCOMA 930*

*Markku Miettinen*

*Chap. 33. PATHOLOGY OF SYNOVIA AND TENDONS 939*

*Markku Miettinen*

*Chap. 34. MISCELLANEOUS TUMOR-LIKE LESIONS, AND HISTIOCYTIC AND FOREIGN BODY REACTIONS 965*

*Markku Miettinen*

*Chap. 35. LYMPHOID, MYELOID, HISTIOCYTIC, AND DENDRITIC CELL PROLIFERATIONS IN SOFT TISSUES 982*

*Markku Miettinen*

*Chap. 36. CYTOLOGY OF SOFT TISSUE LESIONS 1016*

*Matjaž Šebenik and Živa Pohar-Marinšek*

*Chap. 37. SURGICAL MANAGEMENT OF SOFT TISSUE SARCOMA: HISTOLOGIC TYPE AND GRADE GUIDE SURGICAL PLANNING AND INTEGRATION OF MULTIMODALITY THERAPY 1057*

*Charlotte Ariyan and Samuel Singer*

*Chap. 38. MEDICAL ONCOLOGY OF SOFT TISSUE SARCOMAS 1070*

*Robert G. Maki*

**INDEX 1083**