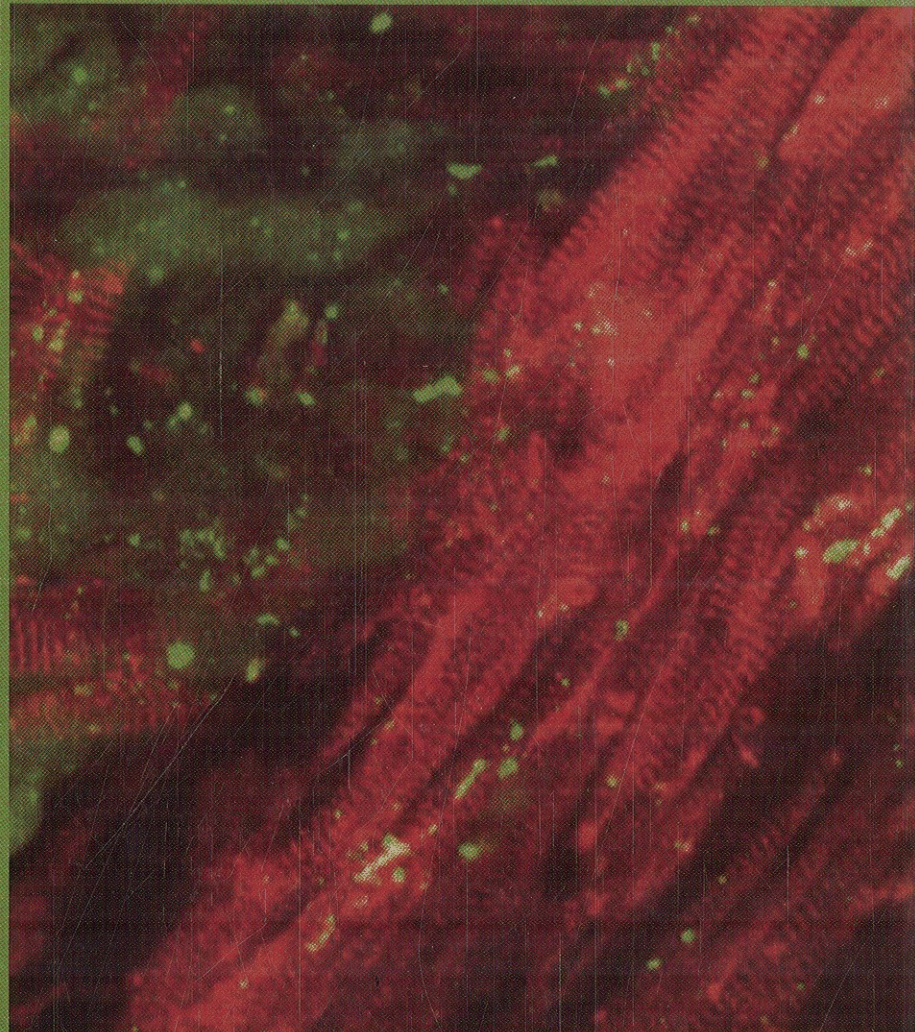
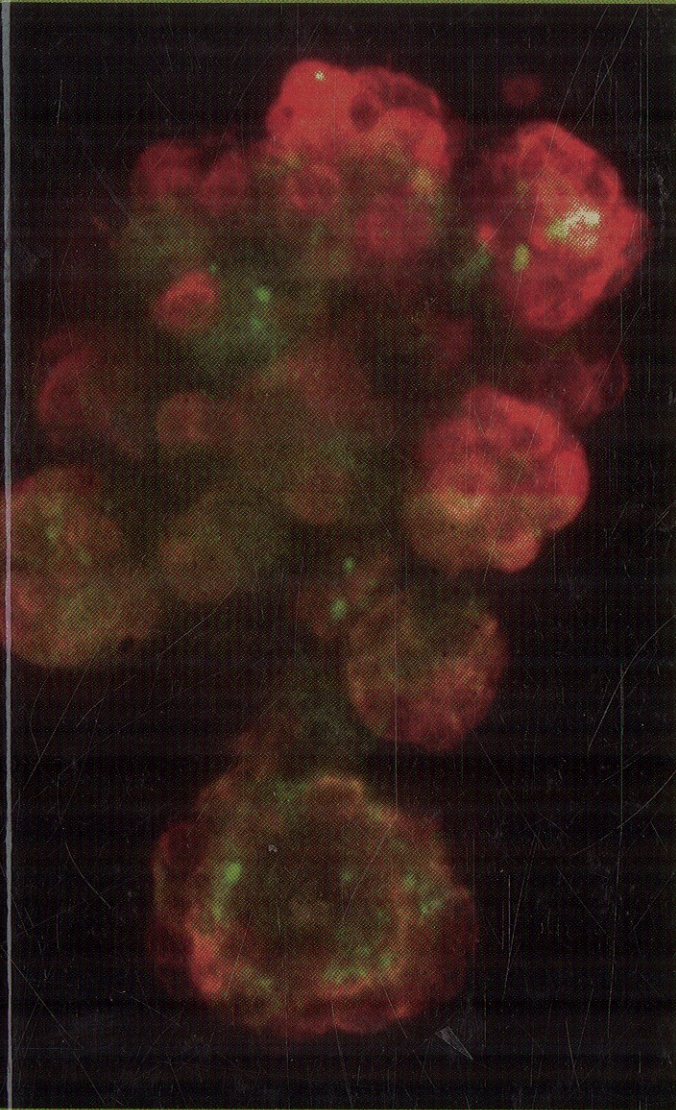


Culture of Animal Cells

SIXTH EDITION



A Manual of Basic Technique and Specialized Applications

R. IAN FRESHNEY

 WILEY-BLACKWELL

WWW.
LINK AVAILABLE

Contents

- List of Figures, xix*
List of Color Plates, xxiii
List of Protocols, xxv
Preface and Acknowledgements, xxvii
Abbreviations, xxix

1. Introduction, 1

- 1.1. **Historical Background, 1**
- 1.2. **Advantages of Tissue Culture, 6**
 - 1.2.1. Control of the Environment, 6
 - 1.2.2. Characterization and Homogeneity of Samples, 6
 - 1.2.3. Economy, Scale, and Mechanization, 6
 - 1.2.4. In vitro Modeling of In vivo Conditions, 7
- 1.3. **Limitations, 7**
 - 1.3.1. Expertise, 7
 - 1.3.2. Quantity, 7
 - 1.3.3. Dedifferentiation and Selection, 8
 - 1.3.4. Origin of Cells, 8
 - 1.3.5. Instability, 8
- 1.4. **Major Differences In vitro, 8**
- 1.5. **Types of Tissue Culture, 8**

2. Biology of Cultured Cells, 11

- 2.1. **The Culture Environment, 11**
- 2.2. **Cell Adhesion, 11**
 - 2.2.1. Cell Adhesion Molecules, 11

- 2.2.2. Intercellular Junctions, 12
- 2.2.3. Extracellular Matrix, 13
- 2.2.4. Cytoskeleton, 14
- 2.2.5. Cell Motility, 14

2.3. **Cell Proliferation, 15**

- 2.3.1. Cell Cycle, 15
- 2.3.2. Control of Cell Proliferation, 15

2.4. **Differentiation, 16**

- 2.4.1. Maintenance of Differentiation, 17
- 2.4.2. Dedifferentiation, 17

2.5. **Cell Signaling, 17**

2.6. **Energy Metabolism, 19**

2.7. **Origin of Cultured Cells, 20**

- 2.7.1. Initiation of the Culture, 21
- 2.7.2. Evolution of Cell Lines, 21
- 2.7.3. Senescence, 22
- 2.7.4. Transformation and the Development of Continuous Cell Lines, 22

3. Laboratory Design, Layout, and Equipment, 25

3.1. **Layout, Furnishing, and Services, 25**

- 3.1.1. Requirements, 25
- 3.1.2. Services, 28
- 3.1.3. Ventilation, 30

3.2. **Layout, 30**

- 3.2.1. Sterile Handling Area, 30
- 3.2.2. Laminar Flow, 30
- 3.2.3. Service Bench, 30
- 3.2.4. Quarantine and Containment, 30

- 3.2.5. Incubation, 31
 - 3.2.6. Preparation Area, 33
 - 3.2.7. Storage, 34
- ## 4. Equipment and Materials, 37
- 4.1. **Requirements of a Tissue Culture Laboratory, 37**
 - 4.2. **Aseptic Area, 37**
 - 4.2.1. Laminar-Flow Hood, 37
 - 4.2.2. Service Carts, 41
 - 4.2.3. Sterile Liquid Handling—Pipetting and Dispensing, 41
 - 4.2.4. Inverted Microscope, 45
 - 4.2.5. CCD Camera and Monitor, 46
 - 4.2.6. Dissecting Microscope, 46
 - 4.2.7. Centrifuge, 47
 - 4.2.8. Cell Counting, 47
 - 4.3. **Incubation and Culture, 47**
 - 4.3.1. Incubator, 47
 - 4.3.2. Humid CO₂ Incubator, 48
 - 4.3.3. Temperature Recorder, 48
 - 4.3.4. Roller Racks, 49
 - 4.3.5. Magnetic Stirrer, 50
 - 4.3.6. Culture Vessels, 50
 - 4.4. **Preparation and Sterilization, 50**
 - 4.4.1. Washup, 50
 - 4.4.2. Preparation of Media and Reagents, 51
 - 4.4.3. Sterilization, 52
 - 4.5. **Storage, 53**
 - 4.5.1. Consumables, 53
 - 4.5.2. Refrigerators and Freezers, 54
 - 4.5.3. Cryostorage Containers, 55
 - 4.5.4. Controlled-Rate Freezer, 55
 - 4.6. **Supplementary Laboratory Equipment, 55**
 - 4.6.1. Computers and Networks, 55
 - 4.6.2. Upright Microscope, 55
 - 4.6.3. Low-Temperature Freezer, 56
 - 4.6.4. Confocal Microscope, 56
 - 4.6.5. PCR Thermal Cycler, 56
 - 4.7. **Specialized Equipment, 56**
 - 4.7.1. Microinjection Facilities, 56
 - 4.7.2. Colony Counter, 56
 - 4.7.3. Centrifugal Elutriator, 56
 - 4.7.4. Flow Cytometer, 56
- ## 5. Aseptic Technique, 57
- 5.1. **Objectives of Aseptic Technique, 57**
 - 5.1.1. Risk of Contamination, 57
 - 5.1.2. Maintaining Sterility, 57
 - 5.2. **Elements of Aseptic Environment, 58**
 - 5.2.1. Laminar Flow, 58
 - 5.2.2. Quiet Area, 60
 - 5.2.3. Work Surface, 61
 - 5.2.4. Personal Hygiene, 61
 - 5.2.5. Reagents and Media, 61
 - 5.2.6. Cultures, 61
 - 5.3. **Sterile Handling, 61**
 - 5.3.1. Swabbing, 61
 - 5.3.2. Capping, 63
 - 5.3.3. Flaming, 63
 - 5.3.4. Handling Bottles and Flasks, 64
 - 5.3.5. Pipetting, 64
 - 5.3.6. Pouring, 65
 - 5.4. **Standard Procedure, 65**
 - Protocol 5.1. *Aseptic Technique in Vertical Laminar Flow*, 65
 - Protocol 5.2. *Working on the Open Bench*, 67
 - Protocol 5.3. *Handling Dishes or Plates*, 69
 - 5.5. **Apparatus and Equipment, 69**
 - 5.5.1. Incubators, 69
 - 5.5.2. Boxed Cultures, 70
 - 5.5.3. Gassing with CO₂, 70
- ## 6. Safety, Bioethics, and Validation, 71
- 6.1. **Laboratory Safety, 71**
 - 6.2. **Risk Assessment, 71**
 - 6.3. **Standard Operating Procedures, 73**
 - 6.4. **Safety Regulations, 73**
 - 6.5. **General Safety, 74**
 - 6.5.1. Operator, 74
 - 6.5.2. Equipment, 74
 - 6.5.3. Glassware and Sharp Items, 74
 - 6.5.4. Chemical Toxicity, 76
 - 6.5.5. Gases, 76
 - 6.5.6. Liquid Nitrogen, 76
 - 6.5.7. Burns, 78
 - 6.6. **Fire, 78**
 - 6.7. **Ionizing Radiation, 78**
 - 6.7.1. Ingestion, 78
 - 6.7.2. Disposal of Radioactive Waste, 78
 - 6.7.3. Irradiation from Labeled Reagents, 78
 - 6.7.4. Irradiation from High-Energy Sources, 79
 - 6.8. **Biohazards, 79**
 - 6.8.1. Levels of Biological Containment, 79
 - 6.8.2. Microbiological Safety Cabinets (MSCs), 79
 - 6.8.3. Human Biopsy Material, 79
 - 6.8.4. Genetic Manipulation, 84
 - 6.8.5. Disposal of Biohazardous Waste, 85
 - 6.8.6. Fumigation, 85
 - 6.9. **Bioethics, 86**
 - 6.9.1. Animal Tissue, 86
 - 6.9.2. Human Tissue, 86

- 6.10. Quality Assurance, 87**
 - 6.10.1. Procedures, 87
 - 6.10.2. Quality Control (QC), 87
- 6.11. Validation, 87**
 - 6.11.1. Authentication, 87
 - 6.11.2. Provenance, 88
 - 6.11.3. Contamination, 88

7. Culture Vessels and Substrates, 89

- 7.1. The Substrate, 89**
 - 7.1.1. Attachment and Growth, 89
 - 7.1.2. Common Substrate Materials, 89
 - 7.1.3. Alternative Substrates, 90
- 7.2. Treated Surfaces, 90**
 - 7.2.1. Substrate Coating, 90
 - Protocol 7.1. Preparation of ECM, 91*
 - 7.2.2. Feeder Layers, 91
 - 7.2.3. Nonadhesive Substrates, 91
- 7.3. Choice of Culture Vessel, 91**
 - 7.3.1. Cell Yield, 93
 - 7.3.2. Suspension Culture, 93
 - 7.3.3. Venting, 94
 - 7.3.4. Sampling and Analysis, 94
 - 7.3.5. Uneven Growth, 95
 - 7.3.6. Cost, 96
- 7.4. Specialized Systems, 96**
 - 7.4.1. Permeable Supports, 96
 - 7.4.2. Three-dimensional Matrices, 97

8. Defined Media and Supplements, 99

- 8.1. Development of Media, 99**
- 8.2. Physicochemical Properties, 99**
 - 8.2.1. pH, 99
 - Protocol 8.1. Preparation of pH Standards, 100*
 - 8.2.2. CO₂ and Bicarbonate, 100
 - 8.2.3. Buffering, 101
 - 8.2.4. Oxygen, 105
 - 8.2.5. Osmolality, 106
 - 8.2.6. Temperature, 106
 - 8.2.7. Viscosity, 107
 - 8.2.8. Surface Tension and Foaming, 107
- 8.3. Balanced Salt Solutions, 107**
- 8.4. Complete Media, 107**
 - 8.4.1. Amino Acids, 108
 - 8.4.2. Vitamins, 108
 - 8.4.3. Salts, 108
 - 8.4.4. Glucose, 108
 - 8.4.5. Organic Supplements, 108
 - 8.4.6. Hormones and Growth Factors, 109
 - 8.4.7. Antibiotics, 109

- 8.5. Serum, 109**
 - 8.5.1. Protein, 109
 - 8.5.2. Growth Factors, 111
 - 8.5.3. Hormones, 111
 - 8.5.4. Nutrients and Metabolites, 111
 - 8.5.5. Lipids, 111
 - 8.5.6. Minerals, 111
 - 8.5.7. Inhibitors, 111
- 8.6. Selection of Medium and Serum, 111**
 - 8.6.1. Batch Reservation, 112
 - 8.6.2. Testing Serum, 113
 - 8.6.3. Heat Inactivation, 114
- 8.7. Other Supplements, 114**
 - 8.7.1. Amino Acid Hydrolysates, 114
 - 8.7.2. Embryo Extract, 114
 - 8.7.3. Conditioned Medium, 114

9. Serum-Free Media, 115

- 9.1. Disadvantages of Serum, 115**
- 9.2. Advantages of Serum-Free Media, 121**
 - 9.2.1. Definition of Standard Medium, 121
 - 9.2.2. Selective Media, 121
 - 9.2.3. Regulation of Proliferation and Differentiation, 121
- 9.3. Disadvantages of Serum-Free Media, 122**
- 9.4. Replacement of Serum, 122**
 - 9.4.1. Commercially Available Serum-Free Media, 122
 - 9.4.2. Serum Substitutes, 122
 - 9.4.3. Serum-Free Subculture, 123
 - 9.4.4. Hormones, 123
 - 9.4.5. Growth Factors, 123
 - 9.4.6. Nutrients in Serum, 124
 - 9.4.7. Proteins and Polyamines, 124
 - 9.4.8. Viscosity, 124
- 9.5. Selection of Serum-Free Medium, 124**
 - 9.5.1. Cell or Product Specificity, 124
 - 9.5.2. Adaptation to Serum-Free Media, 124
- 9.6. Development of Serum-Free Medium, 124**
- 9.7. Preparation of Serum-Free Medium, 129**
- 9.8. Animal Protein-Free Media, 129**
- 9.9. Conclusions, 132**

10. Preparation and Sterilization, 133

- 10.1. Preparation of Reagents and Materials, 133**
- 10.2. Sterilization of Apparatus and Liquids, 133**
- 10.3. Apparatus, 134**
 - 10.3.1. Glassware, 134
 - Protocol 10.1. Preparation and Sterilization of Glassware, 135*

- 10.3.2. Glass Pipettes, 136
- Protocol 10.2. Preparation and Sterilization of Glass Pipettes, 136*
- 10.3.3. Screw Caps, 137
- Protocol 10.3. Preparation and Sterilization of Screw Caps, 137*
- 10.3.4. Selection of Detergent, 138
- 10.3.5. Miscellaneous Equipment, 139
- 10.3.6. Reusable Sterilizing Filters, 139
- Protocol 10.4. Sterilizing Filter Assemblies, 139*
- 10.4. Reagents and Media, 140**
- 10.4.1. Water, 140
- Protocol 10.5. Preparation and Sterilization of Ultrapure Water (UPW), 142*
- 10.4.2. Maintenance of Water Purifier, 143
- 10.4.3. Balanced Salt Solutions, 143
- Protocol 10.6. Preparation and Sterilization of D-PBSA, 144*
- 10.4.4. Preparation and Sterilization of Media, 144
- Protocol 10.7. Preparation of Medium From 1× Stock, 145*
- Protocol 10.8. Preparation of Medium From 10× Concentrate, 146*
- 10.4.5. Powdered Media, 148
- Protocol 10.9. Preparation of Medium From Powder, 149*
- 10.4.6. Customized Medium, 150
- Protocol 10.10. Preparation of Customized Medium, 150*
- 10.5. Sterilization of Media, 151**
- 10.5.1. Autoclavable Media, 151
- 10.5.2. Sterile Filtration, 151
- Protocol 10.11. Sterile Filtration With Syringe-Tip Filter, 153*
- Protocol 10.12. Sterile Filtration With Vacuum Filter Flask, 155*
- Protocol 10.13. Sterile Filtration With Small In-line Filter, 156*
- Protocol 10.14. Sterile Filtration With Large In-line Filter, 156*
- 10.5.3. Serum, 157
- Protocol 10.15. Collection and Sterilization of Serum, 157*
- Protocol 10.16. Dialysis of Serum, 160*
- 10.5.4. Preparation and Sterilization of Other Reagents, 160
- 10.6. Control, Testing, and Storage of Media, 160**
- 10.6.1. Quality Control, 160
- 10.6.2. Sterility Testing, 161
- 10.6.3. Culture Testing, 161
- 10.6.4. Storage, 162

11. Primary Culture, 163

- 11.1. Initiation of a Primary Cell Culture, 163**
- 11.1.1. Enzymes Used in Disaggregation, 163
- 11.1.2. Common Features of Disaggregation, 164
- 11.2. Isolation of the Tissue, 164**
- 11.2.1. Mouse Embryo, 164
- Protocol 11.1. Isolation of Mouse Embryos, 164*
- 11.2.2. Chick Embryo, 166
- Protocol 11.2. Isolation of Chick Embryos, 166*
- 11.2.3. Human Biopsy Material, 168
- Protocol 11.3. Handling Human Biopsies, 170*
- 11.3. Types of Primary Culture, 170**
- 11.3.1. Primary Explantation, 170
- Protocol 11.4. Primary Explants, 170*
- 11.3.2. Enzymatic Disaggregation, 173
- 11.3.3. Warm Trypsin, 173
- Protocol 11.5. Tissue Disaggregation in Warm Trypsin, 173*
- 11.3.4. Trypsinization with Cold Preexposure, 175
- Protocol 11.6. Tissue Disaggregation in Cold Trypsin, 176*
- 11.3.5. Chick Embryo Organ Rudiments, 177
- Protocol 11.7. Chick Embryo Organ Rudiments, 177*
- 11.3.6. Other Enzymatic Procedures, 181
- 11.3.7. Collagenase, 181
- Protocol 11.8. Tissue Disaggregation in Collagenase, 181*
- 11.3.8. Mechanical Disaggregation, 183
- Protocol 11.9. Mechanical Disaggregation by Sieving, 183*
- 11.3.9. Separation of Viable and Nonviable Cells, 184
- Protocol 11.10. Enrichment of Viable Cells, 184*
- 11.3.10. Primary Culture in Summary, 186
- 11.3.11. Primary Records, 186

12. Subculture and Cell Lines, 187

- 12.1. Subculture and Propagation, 187**
- 12.1.1. Cross-contamination and Misidentification, 187
- 12.1.2. Mycoplasma Contamination, 191
- 12.1.3. Terminology, 191
- 12.1.4. Naming a Cell Line, 192
- 12.1.5. Culture Age, 192
- 12.2. Choosing a Cell Line, 193**
- 12.3. Routine Maintenance, 193**
- 12.3.1. Significance of Cell Morphology, 193

- 12.3.2. Replacement of Medium, 194
- 12.3.3. Standard Feeding Protocol, 195

Protocol 12.1. Feeding a Monolayer Culture in Flasks, 195

Protocol 12.2. Feeding a Monolayer Culture in Plates or Dishes, 196

12.4. Subculture, 196

- 12.4.1. Criteria for Subculture, 197
- 12.4.2. Typical Subculture Protocol for Cells Grown as a Monolayer, 199

Protocol 12.3. Subculture of Monolayer Cells, 199

- 12.4.3. Growth Cycle and Split Ratios, 201
- 12.4.4. Cell Concentration at Subculture, 202
- 12.4.5. Propagation in Suspension, 202
- 12.4.6. Subculture of Cells Growing in Suspension, 202

Protocol 12.4. Subculture of Suspension Cells, 203

- 12.4.7. Standardization of Culture Conditions, 204
- 12.4.8. Use of Antibiotics, 205
- 12.4.9. Maintenance Records, 206

13. Cloning and Selection, 207

13.1. Cell Cloning, 207

Protocol 13.1. Dilution Cloning, 208

13.2. Stimulation of Plating Efficiency, 209

- 13.2.1. Conditions That Improve Clonal Growth, 211
- 13.2.2. Conditioned Medium, 212

Protocol 13.2. Preparation of Conditioned Medium, 212

- 13.2.3. Feeder Layers, 213

Protocol 13.3. Preparation of Feeder Layers, 213

13.3. Suspension Cloning, 214

Protocol 13.4. Cloning in Agar, 214

Protocol 13.5. Cloning in Methocel, 217

13.4. Isolation of Clones, 218

Protocol 13.6. Isolation of Clones with Cloning Rings, 218

Protocol 13.7. Isolating Cell Colonies by Irradiation, 219

- 13.4.1. Other Isolation Techniques for Monolayer Clones, 220
- 13.4.2. Suspension Clones, 221

Protocol 13.8. Isolation of Suspension Clones, 221

13.5. Replica Plating, 221

13.6. Selective Inhibitors, 221

13.7. Isolation of Genetic Variants, 223

Protocol 13.9. Methotrexate Resistance and DHFR Amplification, 223

13.8. Interaction with Substrate, 224

- 13.8.1. Selective Adhesion, 224
- 13.8.2. Selective Detachment, 224
- 13.8.3. Nature of Substrate, 225
- 13.8.4. Selective Feeder Layers, 225
- 13.8.5. Selection by Semisolid Media, 225

14. Cell Separation, 227

14.1. Cell Density and Isopyknic Sedimentation, 227

Protocol 14.1. Cell Separation by Centrifugation on a Density Gradient, 227

14.2. Cell Size and Sedimentation Velocity, 230

- 14.2.1. Unit Gravity Sedimentation, 230
- 14.2.2. Centrifugal Elutriation, 230

14.3. Antibody-Based Techniques, 232

- 14.3.1. Immune Panning, 232
- 14.3.2. Magnetic Sorting, 233

Protocol 14.2. Magnet-Activated Cell Sorting (MACS), 234

14.4. Fluorescence-Activated Cell Sorting, 234

14.5. Other Techniques, 236

14.6. Beginner's Approach to Cell Separation, 237

15. Characterization, 239

15.1. The Need for Characterization, 239

15.2. Authentication, 239

15.3. Record Keeping and Provenance, 240

15.4. Parameters of Characterization, 240

- 15.4.1. Species Identification, 240
- 15.4.2. Lineage or Tissue Markers, 241
- 15.4.3. Unique Markers, 242
- 15.4.4. Transformation, 242

15.5. Cell Morphology, 242

- 15.5.1. Microscopy, 247

Protocol 15.1. Using an Inverted Microscope, 248

- 15.5.2. Staining, 248

Protocol 15.2. Staining with Giemsa, 249

Protocol 15.3. Staining with Crystal Violet, 249

- 15.5.3. Culture Vessels for Cytology: Monolayer Cultures, 250

- 15.5.4. Preparation of Suspension Culture for Cytology, 250

Protocol 15.4. Preparation of Suspension Cells for Cytology by Cytocentrifuge, 251

Protocol 15.5. Filtration Cytology, 251

- 15.5.5. Photomicrography, 252

Protocol 15.6. Digital Photography on a Microscope, 252

15.6. Confocal Microscopy, 253

15.7. Chromosome Content, 253

Protocol 15.7. Chromosome Preparations, 253

15.7.1. Chromosome Banding, 255

15.7.2. Chromosome Analysis, 256

15.8. DNA Analysis, 256

15.8.1. DNA Hybridization, 256

15.8.2. DNA Fingerprinting, 257

15.8.3. DNA Profiling, 258

Protocol 15.8. DNA STR Profiling of Cell Lines, 259

15.9. RNA and Protein Expression, 261

15.10. Enzyme Activity, 261

15.10.1. Isoenzymes, 262

15.10.2. Isoenzyme Electrophoresis with Authenticity, 263

Protocol 15.9. Isoenzyme Analysis, 263

15.11. Antigenic Markers, 267

15.11.1. Immunostaining, 267

Protocol 15.10. Indirect Immunofluorescence, 267

15.11.2. Immunoanalysis, 268

15.12. Differentiation, 268

17.4.2. Immortalization with Viral Genes, 283

17.4.3. Immortalization of Human Fibroblasts, 283

Protocol 17.1. Fibroblast Immortalization, 284

17.4.4. Telomerase-Induced Immortalization, 287

Protocol 17.2. Immortalization of Human Stem and Primary Cells by Telomerase, 287

17.4.5. Lymphocyte Immortalization, 290

17.4.6. Transgenic Mouse, 290

17.5. Aberrant Growth Control, 290

17.5.1. Anchorage Independence, 290

17.5.2. Contact Inhibition, 291

Protocol 17.3. Density Limitation of Cell Proliferation, 291

17.5.3. Serum Dependence, 292

17.5.4. Oncogenes, 293

17.6. Tumorigenicity, 293

17.6.1. Malignancy, 293

17.6.2. Tumor Transplantation, 293

17.6.3. Invasiveness, 294

17.6.4. Angiogenesis, 294

Protocol 17.4. In vitro Angiogenesis Assay, 295

17.6.5. Plasminogen Activator, 297

16. Differentiation, 269

16.1. Expression of the In vivo Phenotype, 269

16.1.1. Dedifferentiation, 269

16.1.2. Lineage Selection, 269

16.2. Stages of Differentiation, 270

16.3. Proliferation and Differentiation, 270

16.4. Commitment and Lineage, 270

16.5. Stem Cell Plasticity, 271

16.6. Markers of Differentiation, 272

16.7. Induction of Differentiation, 272

16.7.1. Cell Interaction, 273

16.7.2. Systemic Factors, 274

16.7.3. Cell-Matrix Interactions, 277

16.7.4. Polarity and Cell Shape, 277

16.7.5. Oxygen Tension, 277

16.8. Differentiation and Malignancy, 278

16.9. Practical Aspects, 278

18. Contamination, 299

18.1. Sources of Contamination, 299

18.1.1. Operator Technique, 299

18.1.2. Environment, 299

18.1.3. Use and Maintenance of Laminar-Flow Hood, 299

18.1.4. Humid Incubators, 300

Protocol 18.1. Cleaning Incubators, 300

18.1.5. Cold Stores, 301

18.1.6. Sterile Materials, 301

18.1.7. Imported Cell Lines and Biopsies, 301

18.1.8. Quarantine, 301

18.2. Types of Microbial Contamination, 301

18.3. Monitoring for Contamination, 301

18.3.1. Visible Microbial Contamination, 304

18.3.2. Mycoplasma, 305

18.3.3. Fluorescence Staining for Mycoplasma, 306

Protocol 18.2. Fluorescence Detection of Mycoplasma, 306

18.3.4. PCR for Mycoplasma, 307

Protocol 18.3. Detection of Mycoplasma by PCR, 307

18.3.5. Alternative Methods for Detecting Mycoplasma, 310

18.3.6. Mycoplasma Detection Services, 311

18.3.7. Viral Contamination, 311

17. Transformation and Immortalization, 279

17.1. Role in Cell Line Characterization, 279

17.2. What is Transformation?, 279

17.3. Genetic Instability and Heterogeneity, 279

17.3.1. Genetic Instability, 279

17.3.2. Chromosomal Aberrations, 281

17.4. Immortalization, 281

17.4.1. Control of Senescence, 282

- 18.4. Disposal of Contaminated Cultures, 311**
- 18.5. Eradication of Contamination, 311**
 - 18.5.1. Bacteria, Fungi, and Yeasts, 311
 - Protocol 18.4. Eradication of Microbial Contamination, 311*
 - 18.5.2. Eradication of Mycoplasma, 312
 - Protocol 18.5. Eradication of Mycoplasma Contamination, 312*
 - 18.5.3. Eradication of Viral Contamination, 313
 - 18.5.4. Persistent Contamination, 313
- 18.6. Cross-contamination, 315**
- 18.7. Conclusions, 315**

19. Cryopreservation, 317

- 19.1. Rationale for Freezing, 317**
- 19.2. Considerations before Cryopreservation, 317**
 - 19.2.1. Validation, 317
 - 19.2.2. When to Freeze, 318
- 19.3. Principles of Cryopreservation, 318**
 - 19.3.1. Theoretical Background to Cell Freezing, 318
 - 19.3.2. Cell Concentration, 318
 - 19.3.3. Freezing Medium, 318
 - 19.3.4. Cooling Rate, 319
 - 19.3.5. Ampoules, 320
 - 19.3.6. Cryofreezers, 321
 - 19.3.7. Freezing Cultured Cells, 324
 - Protocol 19.1. Freezing Cells, 324*
 - 19.3.8. Freezer Records, 325
 - 19.3.9. Thawing Stored Ampoules, 325
 - Protocol 19.2. Thawing Frozen Cells, 326*
 - 19.3.10. Freezing Flasks, 327
- 19.4. Vitrification, 327**
 - 19.4.1. Cryopreservation of hES Cells, 328
 - Protocol 19.3. Cryopreservation of hES Cells by Vitrification, 328*
 - 19.4.2. Thawing hES Cells, 330
 - Protocol 19.4. Thawing hES Cells Cryopreserved by Vitrification, 330*
- 19.5. Design and Control of Freezer Stocks, 331**
 - 19.5.1. Freezer Inventory Control, 331
 - 19.5.2. Serial Replacement of Culture Stock, 332
- 19.6. Cell Banks, 332**
- 19.7. Transporting Cells, 333**
 - 19.7.1. Frozen Ampoules, 333
 - 19.7.2. Living Cultures, 333

20. Quantitation, 335

- 20.1. Cell Counting, 335**
 - 20.1.1. Hemocytometer, 335
 - Protocol 20.1. Cell Counting by Hemocytometer, 335*
 - 20.1.2. Electronic Counting, 339
 - Protocol 20.2. Electronic Cell Counting by Electrical Resistance, 340*
 - 20.1.3. Stained Monolayers, 342
 - 20.1.4. Flow Cytometry, 343
- 20.2. Cell Weight, 344**
- 20.3. DNA Content, 344**
 - Protocol 20.3. DNA Estimation by Hoechst 33258, 345*
- 20.4. Protein, 345**
 - 20.4.1. Solubilization of Sample, 345
 - 20.4.2. Bradford Assay, 345
 - Protocol 20.4. Protein Estimation by the Bradford Method, 345*
- 20.5. Rates of Synthesis, 346**
 - 20.5.1. DNA Synthesis, 346
 - Protocol 20.5. Estimation of DNA Synthesis by [³H]Thymidine Incorporation, 346*
 - 20.5.2. Protein Synthesis, 347
 - Protocol 20.6. Protein Synthesis, 347*
- 20.6. Preparation of Samples for Enzyme Assay and Immunoassay, 348**
- 20.7. Cytometry, 348**
 - 20.7.1. In situ Labeling, 348
 - 20.7.2. Flow Cytometry, 348
- 20.8. Replicate Sampling, 348**
 - 20.8.1. Data Acquisition, 349
 - 20.8.2. Data Analysis, 349
- 20.9. Cell Proliferation, 349**
 - 20.9.1. Experimental Design, 349
 - 20.9.2. Growth Cycle, 350
 - Protocol 20.7. Growth Curve with a Monolayer in Flasks, 351*
 - Protocol 20.8. Growth Curve with a Monolayer in Multiwell Plates, 352*
 - 20.9.3. Analysis of Monolayer Growth Curves, 353
 - 20.9.4. Medium Volume, Cell Concentration, and Cell Density, 353
 - 20.9.5. Suspension Cultures, 355
 - Protocol 20.9. Growth Curve with Cells in Suspension, 355*
 - 20.9.6. Phases of the Growth Cycle, 355
 - 20.9.7. Derivatives from the Growth Curve, 357
- 20.10. Plating Efficiency, 357**
 - Protocol 20.10. Determination of Plating Efficiency, 358*
 - 20.10.1. Analysis of Colony Formation, 359

20.10.2. Automatic Colony Counting, 359

20.11. Labeling Index, 360

Protocol 20.11. *Labeling Index with [³H]Thymidine*, 361

20.11.1. Growth Fraction, 361

Protocol 20.12. *Determination of Growth Fraction*, 362

20.11.2. Mitotic Index, 363

20.11.3. Division Index, 363

20.12. Cell Cycle Time, 363

20.13. Cell Migration, 363

21. Cytotoxicity, 365

21.1. Viability, Toxicity, and Survival, 365

21.2. In vitro Limitations, 366

21.2.1. Pharmacokinetics, 366

21.2.2. Metabolism, 366

21.2.3. Tissue and Systemic Responses, 366

21.3. Nature of the Assay, 366

21.3.1. Viability, 366

Protocol 21.1. *Estimation of Viability by Dye Exclusion*, 367

Protocol 21.2. *Estimation of Viability by Dye Uptake*, 367

21.3.2. Survival, 368

Protocol 21.3. *Clonogenic Assay for Attached Cells*, 368

21.3.3. Assays Based on Cell Proliferation, 372

21.3.4. Metabolic Cytotoxicity Assays, 372

21.3.5. Microtitration Assays, 372

Protocol 21.4. *Mtt-Based Cytotoxicity Assay*, 373

21.3.6. Comparison of Microtitration with Clonogenic Survival, 376

21.3.7. Drug Interaction, 376

21.4. Applications of Cytotoxicity Assays, 377

21.4.1. Anticancer Drug Screening, 377

21.4.2. Predictive Drug Testing for Tumors, 377

21.4.3. Testing Pharmaceuticals, 377

21.5. Genotoxicity, 377

21.5.1. Mutagenesis Assay by Sister Chromatid Exchange, 377

Protocol 21.5. *Sister Chromatid Exchange*, 378

21.5.2. Carcinogenicity, 380

21.6. Inflammation, 380

22. Specialized Cells, 383

22.1. Cell Culture of Specialized Cells, 385

22.2. Epithelial Cells, 385

22.2.1. Epidermis, 385

Protocol 22.1. *Epidermal Keratinocytes*, 387

22.2.2. Cornea, 390

Protocol 22.2. *Corneal Epithelial Cells*, 390

22.2.3. Breast, 391

Protocol 22.3. *Preparation of Mammary Epithelial Cells from Reduction Mammoplasty Specimens*, 392

22.2.4. Cervix, 393

Protocol 22.4. *Cervical Epithelium*, 393

22.2.5. Gastrointestinal Tract, 395

Protocol 22.5. *Isolation and Culture of Colonic Crypts*, 395

22.2.6. Liver, 397

22.2.7. Hepatocyte Primary Cultures, 397

Protocol 22.6A. *Isolation of Rat Hepatocytes*, 397

22.2.8. HepaRG Human Hepatocytes, 399

Protocol 22.6B. *Purification of HepaRG Human Hepatocytes*, 399

22.2.9. Pancreas, 401

Protocol 22.7. *Pancreatic Epithelium*, 401

22.2.10. Kidney, 402

Protocol 22.8. *Kidney Epithelium*, 403

22.2.11. Bronchial and Tracheal Epithelium, 404

Protocol 22.9. *Bronchial and Tracheal Epithelium*, 404

22.2.12. Oral Epithelium, 405

Protocol 22.10. *Oral Keratinocytes*, 405

22.2.13. Prostate, 406

Protocol 22.11. *Prostatic Epithelium*, 407

22.3. Mesenchymal Cells, 408

22.3.1. Connective Tissue, 408

22.3.2. Adipose Tissue, 408

Protocol 22.12. *Primary Culture of Adipose Cells*, 409

22.3.3. Muscle, 410

Protocol 22.13. *Isolation and Culture of Smooth Muscle Cells*, 410

Protocol 22.14. *Culture of Myoblasts from Adult Skeletal Muscle*, 411

Protocol 22.15. *Single Myofiber Culture from Skeletal Muscle*, 413

22.3.4. Cartilage, 414

Protocol 22.16. *Chondrocytes in Alginate Beads*, 414

22.3.5. Bone, 416

Protocol 22.17. *Osteoblasts*, 417

22.3.6. Endothelium, 418

Protocol 22.18. *Isolation and Culture of Vascular Endothelial Cells*, 419

22.4. Neuroectodermal Cells, 422

22.4.1. Neurons, 422

Protocol 22.19. *Cerebellar Granule Cells*, 422

22.4.2. Glial Cells, 423

Protocol 22.20. *Primary Culture of Human Astrocytes*, 424

Protocol 22.21. *Olfactory Ensheathing Cells*, 426

22.4.3. Endocrine Cells, 428

22.4.4. Melanocytes, 429

Protocol 22.22. *Culture of Melanocytes*, 429

22.5. Hematopoietic Cells, 430

22.6. Gonads, 432

- 22.6.1. Ovary, 432
- 22.6.2. Testis, 432

Protocol 23.11. Hematopoietic Colony-Forming Assays, 461

23. Stem Cells, Germ Cells, and Amniocytes, 433

23.1. Stem Cells, 433

- 23.1.1. Embryonic Stem Cells, 433
- 23.1.2. Derivation of Mouse Embryonic Stem Cells, 433

Protocol 23.1. Derivation and Primary Culture of Mouse Embryonic Stem Cells, 434

- 23.1.3. Subculture and Propagation of Mouse Embryonic Stem Cells, 436

Protocol 23.2. Propagation of Mouse Embryonic Stem Cell Lines, 438

- 23.1.4. Primary Culture of Human Embryonic Stem Cells, 439

Protocol 23.3. Derivation of Human Embryonic Stem Cells, 440

- 23.1.5. Passaging hES Cells, 440

Protocol 23.4. Manual Passage of hES Cells, 441

- 23.1.6. Pluripotent Stem Cells from Fish Embryos, 442

Protocol 23.5. Cell Cultures from Zebrafish Embryos, 443

23.2. Germ Cells, 445

23.3. Extraembryonic Cells, 445

- 23.3.1. Culture of Amniocytes, 445

Protocol 23.6. Culture of Amniocytes, 445

- 23.3.2. Cells from Neonates and Juveniles, 449

- 23.3.3. Multipotent Stem Cells from the Adult, 449

- 23.3.4. MSCs from Human Bone Marrow, 450

Protocol 23.7. MSC Production from Human Bone Marrow, 450

- 23.3.5. Induced Pluripotent Stem Cells, 452

Protocol 23.8. Reprogramming Human Dermal Fibroblasts for the Generation of Pluripotent Stem Cells, 453

Protocol . A. Generation of Human Dermal Fibroblast Cell Lines, 453

Protocol . B. Generation of High Titers of Infective Virus Coding for iPS Factors, 453

- 23.3.6. Long-Term Bone Marrow Cultures from Mouse, 455

Protocol 23.9. Long-Term Hematopoietic Cell Cultures from Mouse Bone Marrow, 456

- 23.3.7. Long-Term Culture of Human Primitive Hemopoietic Cells, 457

Protocol 23.10. Human Long-Term Culture-Initiating Cell (LTC-IC) Assay, 457

- 23.3.8. Hematopoietic Colony-Forming Assays, 461

24. Culture of Tumor Cells, 463

24.1. Problems of Tumor Cell Culture, 463

24.2. Sampling, 464

- 24.2.1. Selection of Representative Cells, 464
- 24.2.2. Preservation of Tissue by Freezing, 464

Protocol 24.1. Freezing Biopsies, 465

24.3. Disaggregation, 465

24.4. Primary Culture, 465

24.5. Selective Culture of Tumor Cells, 466

- 24.5.1. Selective Media, 466
- 24.5.2. Confluent Feeder Layers, 466

Protocol 24.2. Growth on Confluent Feeder Layers, 466

- 24.5.3. Suspension Cloning, 467

- 24.5.4. Xenografts, 467

24.6. Development of Cell Lines, 468

- 24.6.1. Subculture of Primary Tumor Cultures, 468

- 24.6.2. Continuous Cell Lines, 469

24.7. Characterization of Tumor Cell Cultures, 470

- 24.7.1. Heterogeneity of Tumor Cultures, 470

- 24.7.2. Histotypic Culture, 470

24.8. Specific Tumor Types, 471

- 24.8.1. Breast, 471

Protocol 24.3. Culture of Mammary Tumor Cells, 472

- 24.8.2. Lung, 472

- 24.8.3. Stomach, 473

- 24.8.4. Colon, 473

Protocol 24.4. Culture of Colorectal Tumors, 473

- 24.8.5. Pancreas, 475

- 24.8.6. Ovary, 475

- 24.8.7. Prostate, 476

- 24.8.8. Bladder, 476

- 24.8.9. Skin, 476

- 24.8.10. Cervix, 477

- 24.8.11. Glioma, 477

- 24.8.12. Neuroblastoma, 478

- 24.8.13. Seminoma, 478

- 24.8.14. Lymphoma and Leukemia, 478

Protocol 24.5. Establishment of Continuous Cell Lines from Leukemia/Lymphoma, 478

25. Three-Dimensional Culture, 481

25.1. Cell Interaction and Phenotypic Expression, 481

- 25.1.1. Effect of Cell Density, 481

- 25.1.2. Reciprocal Interactions, 481
25.1.3. Choice of Models, 482
- 25.2. Organ Culture, 482**
25.2.1. Gas and Nutrient Exchange, 482
25.2.2. Structural Integrity, 484
25.2.3. Growth and Differentiation, 484
25.2.4. Limitations of Organ Culture, 484
25.2.5. Types of Organ Culture, 484
Protocol 25.1. Organ Culture, 485
- 25.3. Histotypic Culture, 486**
25.3.1. Gel and Sponge Techniques, 486
25.3.2. Hollow Fibers, 487
25.3.3. Spheroids, 487
Protocol 25.2. 3-D Culture in Spheroids, 488
25.3.4. Rotating Chamber Systems, 489
25.3.5. Immobilization of Living Cells in Alginate, 490
25.3.6. Filter Well Inserts, 490
Protocol 25.3. Filter Well Inserts, 491
25.3.7. Cultures of Neuronal Aggregates, 492
Protocol 25.4. Neuronal Aggregates, 492
- 25.4. Organotypic Culture, 493**
25.4.1. Tissue Equivalents, 494
25.4.2. Tissue Engineering, 495
- 25.5. Imaging Cells in 3-D Constructs, 495**
- 26. Scale-up and Automation, 497**
- 26.1. Scale-up in Suspension, 497**
Protocol 26.1. Stirred 4-Liter Batch Suspension Culture, 498
26.1.1. Continuous Culture, 500
26.1.2. Scale and Complexity, 500
26.1.3. Mixing and Aeration, 501
- 26.2. Scale-up in Monolayer, 503**
26.2.1. Multisurface Propagators, 504
Protocol 26.2. NUNC Cell Factory, 504
26.2.2. Roller Culture, 505
Protocol 26.3. Roller Bottle Culture, 505
26.2.3. Microcarriers, 506
Protocol 26.4. Microcarriers, 508
26.2.4. Large Microcarriers, 509
26.2.5. Perfused Monolayer Culture, 509
- 26.3. Process Control, 510**
- 26.4. Automation, 513**
26.4.1. Robotic Cell Culture, 513
26.4.2. High-Throughput Screening, 514
- 27. Specialized Techniques, 517**
- 27.1. Lymphocyte Preparation, 517**
27.1.1. Isolation by Density, 517
Protocol 27.1. Preparation of Lymphocytes, 517
27.1.2. Blast Transformation, 518
Protocol 27.2. PHA Stimulation of Lymphocytes, 518
- 27.2. Autoradiography, 518**
Protocol 27.3. Microautoradiography, 519
- 27.3. Time-Lapse Recording, 522**
Protocol 27.4. Time-Lapse Video Recording, 523
- 27.4. Cell Synchrony, 525**
27.4.1. Cell Separation, 525
27.4.2. Blockade, 525
- 27.5. Culture of Cells from Poikilotherms, 525**
27.5.1. Fish Cells, 525
27.5.2. Insect Cells, 526
Protocol 27.5. Propagation of Insect Cells, 526
- 27.6. Somatic Cell Fusion, 527**
27.6.1. Cell Hybridization, 527
Protocol 27.6. Cell Hybridization, 527
27.6.2. Nuclear Transfer, 529
- 27.7. Production of Monoclonal Antibodies, 529**
Protocol 27.7. Production of Monoclonal Antibodies, 529
- 28. Training Programs, 533**
- 28.1. Objectives, 533**
- 28.2. Preparative and Manipulative Skills, 533**
Exercise 1 Sterile Pipetting and Transfer of Fluids, 536
Exercise 2 Washing and Sterilizing Glassware, 538
Exercise 3 Preparation and Sterilization of Water, 538
Exercise 4 Preparation and Sterilization of Dulbecco's Phosphate-Buffered Saline (D-PBS) without Ca^{2+} and Mg^{2+} (D-PBSA), 539
Exercise 5 Preparation of pH Standards, 540
Exercise 6 Preparation of Stock Medium from Powder and Sterilization by Filtration, 541
- 28.3. Basic Cell Culture Techniques, 543**
Exercise 7 Observation of Cultured Cells, 543
Exercise 8 Preparing Sterile Medium for Use, 545
Exercise 9 Feeding a Monolayer Culture, 546
Exercise 10 Preparation of Complete Medium from 10 \times Stock, 547
Exercise 11 Counting Cells by Hemocytometer and Electronic Counter, 548
Exercise 12 Subculture of Cells Growing in Suspension, 551
Exercise 13 Subculture of Cell Lines Growing in Monolayer, 552
Exercise 14 Staining a Monolayer Cell Culture with Giemsa, 554
Exercise 15 Construction and Analysis of Growth Curve, 556
- 28.4. Advanced Exercises, 557**
Exercise 16 Cell Line Characterization, 558
Exercise 17 Detection of Mycoplasma, 559
Exercise 18 Cryopreservation of Cultured Cells, 560
Exercise 19 Primary Culture, 563
Exercise 20 Cloning of Monolayer Cells, 566
- 28.5. Specialized Exercises, 568**

29. Problem Solving, 569

29.1. Abnormal Appearance of Cells, 570

29.2. Slow Cell Growth, 570

29.2.1. Problems Restricted to Your Own Stock, 570

29.2.2. Problem More General and Other People Having Difficulty, 571

29.3. Medium, 572

29.3.1. Formulation, Preparation, and Storage, 572

29.3.2. Unstable Reagents, 574

29.3.3. Purity of Medium Constituents, 574

29.4. Substrates and Containers, 575

29.5. Microbial Contamination, 576

29.5.1. Confined to Single User, 576

29.5.2. Widespread, 578

29.5.3. Air Supply and Laminar-Flow Hoods, 579

29.5.4. Specific Contaminants, 580

29.6. Chemical Contamination, 581

29.6.1. Glassware, 581

29.6.2. Pipettes, 581

29.6.3. Water Purification, 581

29.6.4. Cryopreservatives, 581

29.6.5. Powders and Aerosols, 581

29.7. Primary Culture, 582

29.7.1. Poor Take in Primary Culture, 582

29.7.2. Wrong Cells Selected, 583

29.7.3. Contamination, 583

29.8. Differentiation, 583

29.9. Feeding, 584

29.9.1. Regular Monolayers, 584

29.9.2. Cell Cloning, 584

29.10. Subculture, 585

29.10.1. Poor Take or Slow Growth, 585

29.10.2. Uneven Growth, 585

29.11. Cloning, 586

29.11.1. Too Few Colonies per Dish, 586

29.11.2. Too Many Colonies per Dish, 587

29.11.3. Nonrandom Distribution, 587

29.12. Cross-contamination and Misidentification, 588

29.13. Cryopreservation, 588

29.13.1. Poor Recovery, 588

29.13.2. Changed Appearance after Cryopreservation, 589

29.13.3. Loss of Stock, 590

29.14. Cell Counting, 590

29.14.1. Hemocytometer, 590

29.14.2. Electronic Counting via Orifice by Resistance, 591

30. In Conclusion, 593

Appendix I: Calculations and Preparation of Reagents, 595

Calculations, 595

Conversions, 595

Preparation of Reagents, 596

Appendix II: Sources of Equipment and Materials, 603

Appendix III: Suppliers and Other Resources, 623

Appendix IV: Glossary, 633

Appendix V: Cross-contaminated or Misidentified Cell Lines, 639

Appendix VI: General Textbooks and Relevant Journals, 661

References, 663

Index, 717