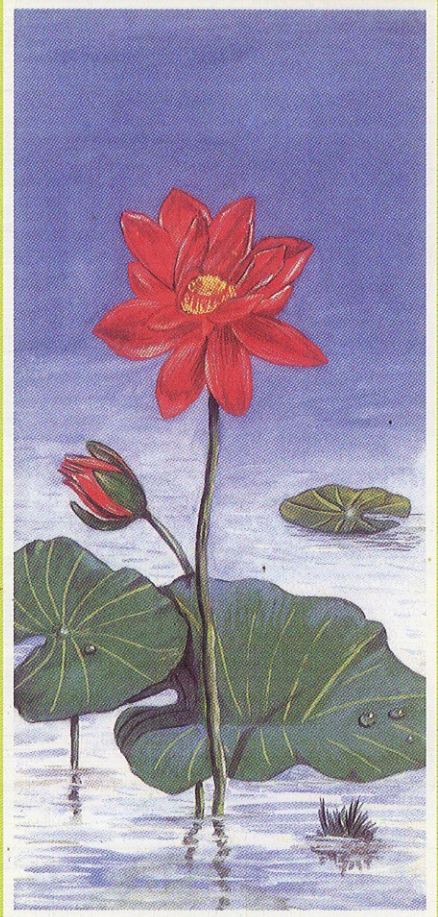


Religious & Useful Plants of Nepal & India



Rhododendron arboreum (Laliguras),
the national flower of Nepal.



Nelumbo nucifera (Lotus),
the national flower of India.

MAJUPURIA

CONTENTS

- I. Why This Book?, 9
- II. Introduction, 14
- III. Importance of the Plants and Trees, 19
- IV. Taboos in the World of Vegetation, 23
- V. Plants and Trees in Religion and Medicine, 29
 1. Kalpataru of Kalpavriksha or Tree of Eternity, 30
 2. Parijat or Harisingar or Night Jasmine, (*Nyctanthes arbror-tristis*), 33
 3. Soma, 36
 4. Rudraksha or Utrasum Bead Tree or the Holy Beed of *Elaeocarpus*, 41
 5. Tulasi or Vrinda or Holy Basil (*Ocimum sanctum*), 52
 - 5A. Salagrama or Shaligrama, 60
 6. Kamal or Lotus (*Nelumbium nucifera*), 64
 7. Pipal or Bodhi Tree (*Ficus religiosa*), 78
 8. Bat or Bar or Banyan Tree (*Ficus benghalensis*), 85
 9. Bel or Wood Apple (*Aegle marmelos*), 92
 10. Aam or Amp or Mango (*Mangifera indica*), 99
 11. Amala or Amalak or Emblica myrobalan (*Phyllanthus emblica*), 105
 12. Ashok (*Saraca asoca*), 111
 13. Harro or Haritaki or Black Myrobalan (*Terminalia chebula*), 115
 14. Palash or Bastard Teak (*Butea monosperma*), 118
 15. Kera or Kela or Banana or Plantain (*Musa paradisiaca*), 123
 16. Bans or Bamboo (*Bambusa spp.*), 127
 17. Sal or Shal or Sakhuwa (*Shorea robusta*), 132
 18. Kadam (*Anthocephalus cadamba*), 138
 19. Jamun or Black Berry (*Syzygium cumini*), 142
 20. Nariwal or Nariyal or Coconut (*Cocos nucifera*), 146
 21. Khajur or Date Palm (*Phoenix sylvestris*), 152
 22. Nim or Neem (*Azadirachta indica*), 155
 23. Babul or Gum Arabic Tree (*Acacia arabica*), 161
 24. Arka or Aank or Swallow Wart (*Calotropis gigantea*), 164
 25. Dhatura or Thorn Apple (*Datura stramonium*), 167
 26. Dubo or Durva grass or Bermuda Grass (*Cynodon dactylon*), 170
 27. Kusha or Kush grass (*Desmotachya bipinnata*), 173
 28. Bhojpatra or Birch (*Betula utilis*), 176
 29. Sami or Shami or Chaunker (*Ficus benjamina*), 179

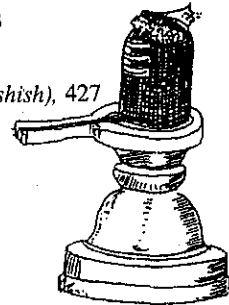
30. Srikhand or Chandan or Sandalwood (*Santalum album*), 182
30A. Rakta Chandan or Lal Chandan (*Pterocarpus santalinus*), 186
31. Gular or Dumari (*Ficus glomerata*), 189
32. Bhang or Ganja or Indian Hemp (*Cannabis sativa*), 192
33. Tarika or Keora or Screw Pine (*Pandanus nepalensis*), 195
34. Sihundi or Snuhi or Cactus spurge (*Euphorbia royaleana*), 198
35. Aswagandha or Winter cherry (*Withania somnifera*), 201
36. Debdar or Deodar (*Polylathia longifolia*), 203
37. Champa or Champak (*Michelia champaca*), 206
38. Japa Puspi or Gudhal or China Rose (*Hibiscus rosasinensis*), 209
39. Karvir or Kaner or Oleander (*Nerium indicum*), 212
40. Kuchila or Kajara or Nux-vomica (*Strychnos nux-vomica*), 215
41. Bayer or Chinese Date (*Zizyphus mauritiana*), 218
42. Imli or Tamarind (*Tamarindus indica*), 221
43. Suryamukhi or Sun Flower (*Helianthus annus*), 223
44. Chyuri or Mahua or Butter fruit (*Bassia butyracea*), 226
45. Simal or Semar or Silk Cotton Tree (*Bombax malabaricum*), 229
46. Koiralo or Kachnar (*Bahunia* sp.), 232
47. Kapur or Camphor (*Cinnanomum camphora*), 235
48. Pan or Nagavali or Betel (*Piper betle*), 237
49. Supari or Areca nut or Betel Nut Palm (*Areca catechu*), 240
50. Nageshwari or Nagakeshar or Iron wood (*Mesua ferrea*), 243
51. Besar or Haldi or Turmeric (*Curcuma longi*), 246
52. Keshar or Saffron (*Curcus sativus*), 249
53. Kabro or Pilkhan (*Ficus lacor*), 251
54. Karanda or Kaitho or Kenth or Wood Apple (*Feronia limonia*), 253
55. Okhar or Akharot or Walnut (*Juglans regia*), 255
56. Kans or Kas or Thatch grass (*Sachharum spontaneum*), 257
57. Ukhu or Ganna or Sugarcane (*Saccharum officinarum*), 259
58. Katush or Serang or Chestnut (*Castanopsis* sp.), 261
59. Ketak or Ketaki or Adam's Needle (*Yucca gloriosa*), 263
60. Malsari or Mulsari or Bakul or Spanish Cherry (*Mimusops elengi*), 266
61. Lali Gurash or Baras or Rhododendron (*Rhododendron arboreum*), 269
62. Kemraphool or Kapoor Kachari or Pankha Phool or
Ginger Lily (*Hedychium* sp.), 272
63. Vijaya Shal or Vijay Sar or Bandhuk Pushpa or Indian
Kino Tree (*Pterocarpus marsupium*), 275
64. Shayapatri or Gainda or Kanak Pushpika or Marigold (*Tagetes erecta*), 277

65. Singara or Singhada or Water Chestnut (*Trapa bispinosa*), 279
66. Lalpate or Lal Dudhia or Poinsettia (*Euphorbia pulcherrima*), 282
67. Shrish or Siris or Black Siris or Parrot Tree or East Indian Walnut (*Albizzia labbek*), 284
68. Rukh Kathar or Kathal or Panas or Jack Fruit (*Artocarpus integrifolia*), 287
69. Rajbriksha or Amaltash or Indian Laburnum (*Cassia fistula*), 290
70. Faledo or Mandar or Panjira or Coral tree (*Erythrina stricta*), 293
71. Marua Phool or Gendret or Sweet Marjoram (*Majorana hortensis* = *Origanum majoriana*), 296
72. Make Phool or Corn Flower or Bachelors' Button (*Centaurea cyanus*), 299
73. Bhulu or Mahadev ka Phool or Nepali Paper Plant (*Daphne papyracea*), 301
74. Makhana or Makhan (*Euryale ferox*), 303
75. Makhmali Phool or Lal Murga or Globe Amarnath (*Gomphrena globosa*), 305
76. Agasti or Agastya (*Sesbania grandiflora*), 307
77. Jai or Pili Chameli or Nepali Jasmine (*Jasminum humile*), 310
78. Chameli or Malti or Tree Jasmine (*Jasminum* spp.), 313
79. Gulaf or Gulab or Rose (*Rosa* sp.), 315
80. Godavari or Guldaodi or Vasanti (*Tanacetum* = *Chrysanthemum* sp.), 317
81. Titepati or Nagdhen or Worm Wood or Mugwort (*Artemisia* sp.), 319
82. Mehandi or Mehari or Henna (*Lawsonia inermis*), 321
83. Agar or Agar or Calambac (*Aquilaria agallocha*), 324
84. Anar or Darin or Pomegranate (*Punica granatum*), 327
85. *Apmarga* or *Chirchita* or *Chaff flower* (*Achyranthes* sp.), 329
86. Amba or Amrud or Guava (*Psidium guajava*), 332
87. Arjun or Kahn or White Murgah (*Terminalia arjuna*), 334
88. Aru or Adu or Peach (*Prunus persica*), 336
89. Ainselu or Lal Achu or Golden Raspberry (*Rubus allepticus*), 338
90. Kather Champa or Hari Champa or Climbing Ylang-Ylang (*Artabotrys uncinatus*), 340
91. Tiori or Gulmehandi or Garden Balsam (*Impatiens balsamina*), 342
92. Kapas or Roe or Cotton (*Gossypium arboreum*), 344
93. Paiyaun or Padmak or Himalayan Cherry (*Prunus cerasoides*), 346
94. Gunkeshari or Gandhavali or Pheasant's eye (*Narcissus pecticus*), 348
95. Gumpati or Gumma or Draun Pushpa (*Leucas cephalotes*), 350
96. **Some Grains**, 352
 - 96A. Paddy Plant or Dhan or Rice (*Oryza sativa*), 353
 - 96B. Makai or Makka or Maize (*Zea mays*), 357

- 96C. Channa or Gram (*Cicer arietinum*), 359
 96D. Kodo or Maruwa or Finger or African Millet (*Eleusine corana*), 361
 96E. Genhu or Wheat (*Triticum sativum*), 363
 96F. Til or Sesame (*Seasmum indicum*), 365
 96G. Kerao or Mater or Pea (*Pisium sativum*), 367
 96H. Tori or Indian Rape Seed (*Brassica campestris* var. tori), 369
 96I. Jau or Barley (*Hordeum vulgare*), 371
 96J. Kaguno or Kaguni or Fox-Tail Millet (*Setaria italica*), 373
 96K. Mung or Mungi or Golden Gram (*Phaseolus aureus*), 375
 96L. Mans or Urad or Black Gram (*Phaseolus mungo*), 377
 96M. Masuro or Musur or Lentil (*Lens culinaris*), 379
97. **Some Vegetables**, 381
- 97A. Pharsi or Kashiphal or Pumpkin or Squash (*Cucurbita maxima*), 382
 97B. Louki or Louka or Gourd (*Cucurbita pepo*), 384
 97C. Kubhindo or Petha or White Gourd (*Benicasa hispida*), 386
 97D. Kankro or Khira or Cucumber (*Cucumis sativus*), 388
 97E. Karkalo or Arbi or Co-coyam or Elephant Ear
 (*Colocasia esculanta*), 390
 97F. Moolā or Mooli or Radish (*Raphanus sativus*), 393
- VI. Vegetarianism vs Non-Vegetarianism, 394
 VIA. Flesh Food or Vegetable Diet, 408
 VII. Appendix, 413
- A. Barna or Barun (*Crataeva religiosa*), 414
 B. Temple Tree or Golanchi (*Plumeria rubra*), 416
 C. Pine Apple (*Ananas cosmos us*), 419
 D. Periwinkle or Sada Bahar (*Vinca rosea*), 421
 E. Chay or tea (*Cameldia sinensis*), 423
 F. Coffee (*Coffee arabica*), 425
 G. Cannabis (*Marijuna or Hemp or Hashish*), 427
- VIII. Select References, 431
 IX. Glossary, 436
 X. Index, 444

Special Acknowledgement:

Dr. Naoki Nishioka, Tokyo, Japan



*“If one offers me with love and devotion a leaf, a flower,
 a fruit or water, I will accept it.”*

- Bhagwad Gita