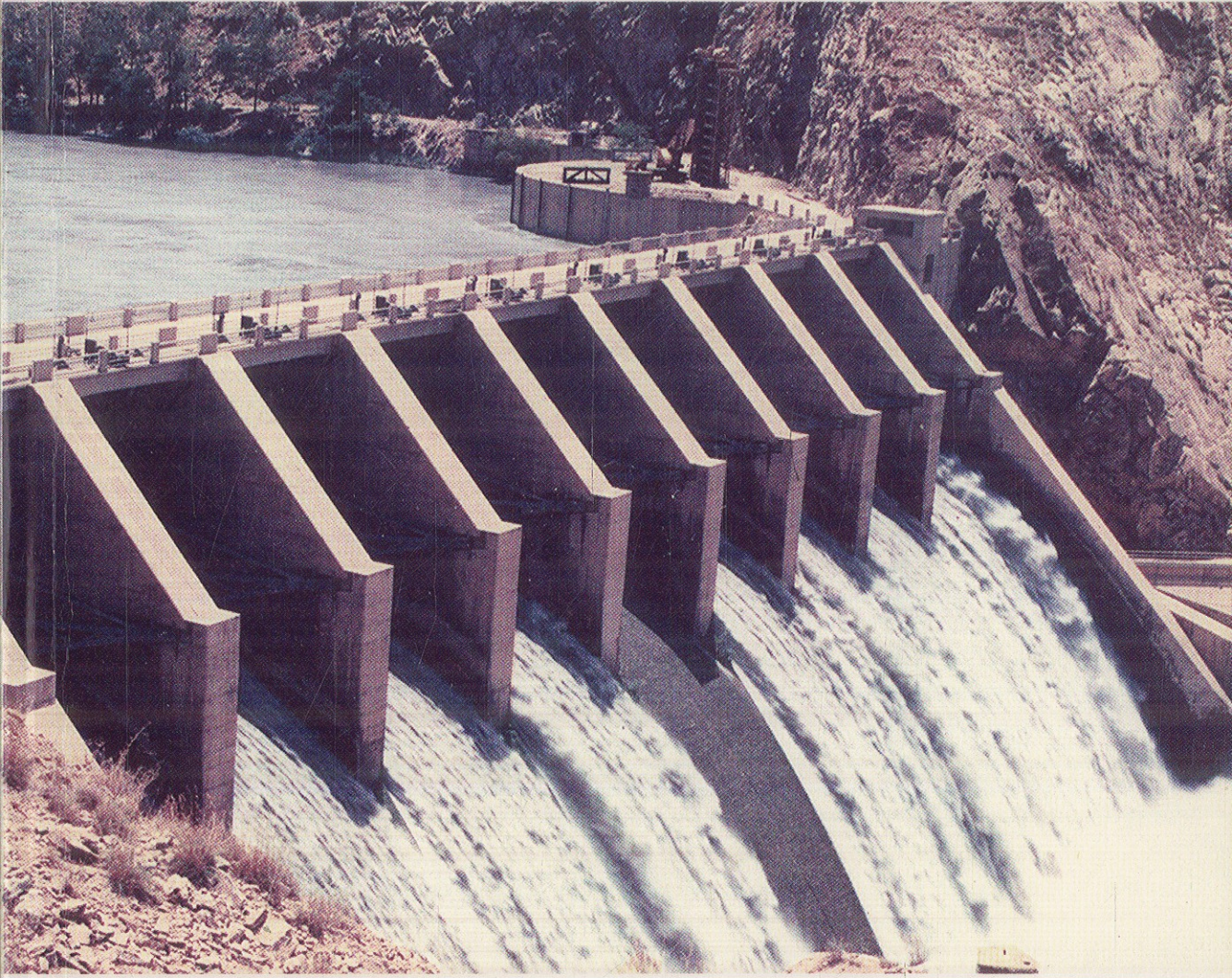


DAMS AND RESERVOIRS

PLANNING AND ENGINEERING



IQTIDAR H. SIDDIQUI

OXFORD

Contents

<i>Acknowledgements</i>		xiii
1	Planning and Investigations	1
1.1	Planning and Investigations	1
1.2	Stages of Investigations	2
2	Topographical Survey	4
2.1	Engineering Surveys	4
2.2	Control Surveys	5
2.3	Topographical Survey	6
2.4	Ground Survey Methods	6
2.5	Field Methods	7
2.6	Topographic Survey Instruments	8
2.7	Field Data and Preparation of Maps	9
2.8	Standards for Topographic Maps	9
2.9	Contour Intervals	9
2.10	Photogrammetric Methods	10
2.11	Aerial Photographs	13
2.12	Use of Topographical Maps	14
3	Geological and Geotechnical Investigations	17
3.1	Geological and Geotechnical Investigations	17
3.2	Surface Investigations	18
3.3	Sub-surface Investigations	19
3.4	Sub-surface Exploration Methods	20
3.5	Geophysical Methods	27
3.6	Sampling and Logging	28
3.7	Testing Soil and Rock Samples	31
4	Hydrological and Hydraulic Investigations	49
4.1	The Hydrological Cycle	49
4.2	Understanding Hydrology	50
4.3	Drainage Basin, Catchment Area or Watershed	50
4.4	Precipitation	51
4.5	Snowfall and Snowmelt	51
4.6	Rainfall	53
4.7	Run-off	58
4.8	Computation of Run-off	60
4.9	Floods, Peak Flows or Maximum Rates of Run-off	69
4.10	Sediment Measurement	79
4.11	Evaporation and Transpiration	84
4.12	Role of Computer Models in Hydrology	87

5	Environmental Surveys	91
5.1	The Objectives of Environmental Impact Assessment (EIA)	91
5.2	Potential Effects of a Dam Project on Environment	91
5.3	Identification of Potential Effects	94
5.4	Required Information	95
5.5	Sources of Information	95
5.6	Systematic Approach	95
5.7	Remote Sensing and Geographical Information System (GIS) Techniques	95
6	Reservoir Planning	97
6.1	Reservoir Planning	97
6.2	Uses of Reservoir Water	97
6.3	Classification of Reservoirs	99
6.4	Drainage Basin, Catchment Area or Watershed	100
6.5	Reservoir Catchment Yield	100
6.6	Reservoir Yields	100
6.7	Reservoir Site: Storage Volume	101
6.8	Reservoir Capacity	101
6.9	Reservoir Storage Zones	107
6.10	Reservoir Sedimentation	107
6.11	Wave Allowances	109
6.12	Design Flood	110
6.13	Reservoir Elevation	111
6.14	Flood Absorption Capacity of a Reservoir	112
6.15	Back Water Curve	123
6.16	Economic Height of a Dam	127
6.17	Economic Life of a Reservoir	128
7	Types of Dams	130
7.1	Classification by Functions	130
7.2	Classification by Construction Material	131
7.3	Classification by Special Structural Design	131
7.4	Classification by Hydraulic Design	132
7.5	Selection of the Type of Dam	132
7.6	Location of the Dam	133
8	Gravity Dams	136
8.1	Types of Gravity Dams	136
8.2	Section of a Dam	137
8.3	Shafts and Galleries	139
8.4	Forces Acting on Gravity Dams	140
8.5	Load Combination	147
8.6	Gravity Dams: Stability Requirements	148
8.7	General Design Procedure	151
8.8	Design Methods	152
8.9	Design Example	153

3.10	Foundation Treatment	156
3.11	Drainage of Rock Foundation	159
3.12	Three Gorges Dam Project, China	159
9	Earth Fill Dams	161
9.1	Design Criteria	161
9.2	Types of Earth Fill Dams	161
9.3	Causes of Failure in Earth Dams	163
9.4	Design Consideration	165
9.5	Control of Seepage through the Dam Section	170
9.6	Amount of Seepage through a Dam	171
9.7	Control of Seepage under a Dam	178
9.8	Seepage under a Dam	180
9.9	Stability of Slopes	182
9.10	Case Description	187
10	Rock Fill Dams	194
10.1	Definition	194
10.2	Typical Design of a Rock Fill Dam	194
10.3	Case Description	197
11	Miscellaneous Dams	200
A	Arch Dams	200
11.1	Types of Arch Dams	200
11.2	Overflow Arch Dams	201
11.3	Case Description	201
B	Buttress Dams	203
11.4	Types of Buttress Dams	203
11.5	Advantages and Disadvantages of Buttress Dams	204
12	Spillways	206
12.1	Functions	206
12.2	Capacity	206
12.3	Shapes of a Spillway Crest	206
12.4	Types of Spillways	207
12.5	Causes of River Bed Erosion below Spillways	213
12.6	Terminal Structures	214
12.7	Crest Gates	218
13	Outlet Works	220
13.1	Functions	220
13.2	Capacities	220
13.3	Positioning	220
13.4	Outlet Works for a Gravity Dam	221
13.5	Outlet Works for a Fill Dam	221
13.6	Components of Outlet Works	222
13.7	Case Description	224

14	Hydraulic Model Studies	226
14.1	Advantages and Disadvantages	226
14.2	Law of Similitude	226
14.3	Dimensional Analysis	228
14.4	River Model	228
14.5	Model Scale	228
14.6	Choice of Scales	229
14.7	Planning a Model Study	229
14.8	Subjects for Model Studies	231
14.9	Case Descriptions	232
15	River Diversion and Construction	239
15.1	Characteristics of River Flows	239
15.2	Diversion Flood	239
15.3	Methods of Diversion	240
15.4	Diversion Works	241
15.5	Construction of a Dam	243
15.6	Construction of Gravity Dams	246
15.7	Properties of Concrete	255
15.8	Roller Compacted Concrete (RCC)	256
16	Instrumentation and Monitoring	260
16.1	Purpose of Instrumentation	260
16.2	Forces Acting on a Dam Structure	260
16.3	Types of Instruments	261
16.4	Location of Instruments	261
16.5	Installation of Instruments	261
16.6	Calibration and Maintenance of Instruments	261
16.7	Data Collection	262
16.8	Data Processing	262
16.9	Data Interpretation	262
16.10	Instruments for Dam Safety	262
17	Watershed Management	267
17.1	Watershed Management	267
17.2	Objectives	268
17.3	Programme	268
17.4	Project Area	269
17.5	Selection of Priority Areas	269
17.6	Role of Remote Sensing and Use of Geo-based Information System (GIS)	269
17.7	Sedimentation of Reservoirs	269
17.8	Sources of Sediments	270
17.9	Estimation of Sediment Flow Rates	270
17.10	Controlling Sedimentation of Reservoirs	271
17.11	Watershed Management Techniques	271
17.12	Conservation Measures for Hill Slopes	272

17.13	Stream Bank Erosion Control	274
17.14	Gully Erosion and Control	275
17.15	Wind Blown Sediment and Control	276
17.16	Watershed Management in Indus Basin Dams	277
	<i>Bibliography</i>	278
	<i>Index</i>	281