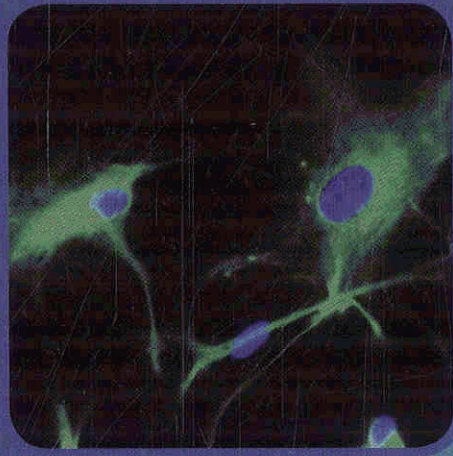
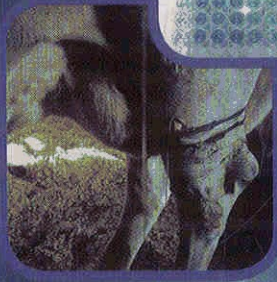


applied animal endocrinology

2nd edition



E. James Squires

MODULAR
TEXTS


www.cabi.org

Contents

| | |
|---|----------|
| Preface to the 2nd Edition | xiii |
| Preface to the 1st Edition | xv |
| Acknowledgements for the 2nd Edition | xvii |
| Acknowledgements for the 1st Edition | xix |
| Acronyms and Abbreviations | xxi |
| 1 Hormone and Receptor Structure and Function | 1 |
| 1.1 Introduction | 1 |
| What is a hormone? | 1 |
| Why are hormones necessary? | 1 |
| How do hormones function? | 2 |
| What effects are due to hormones? | 3 |
| How is hormone action selective? | 4 |
| Types of hormones | 5 |
| Location of endocrine glands | 7 |
| 1.2 Synthesis, Release and Metabolism of Hormones | 7 |
| Synthesis of protein hormones | 9 |
| Synthesis of steroid hormones | 10 |
| Synthesis of eicosanoids | 11 |
| Synthesis of thyroid hormones | 13 |
| Synthesis of monoamines | 15 |
| Hormone release | 15 |
| Metabolism and excretion of hormones | 17 |
| 1.3 Receptors and Hormone Action | 18 |
| Extracellular receptors | 18 |
| G protein-coupled receptors | 20 |
| Adenylate cyclase–cAMP–protein kinase A pathway | 21 |
| Calcium-dependent phospholipase C–protein kinase C system | 24 |
| Interaction of cAMP and Ca ²⁺ pathways | 25 |
| Catalytic receptors | 26 |
| Tyrosine kinase receptors | 26 |
| Cytokine receptors | 27 |
| Receptor serine kinase | 27 |
| MAP kinase system | 28 |
| Termination of hormone action | 29 |
| Intracellular receptors | 29 |
| Structural and functional domains of nuclear receptors | 32 |
| Organization of nuclear chromatin and the nuclear matrix | 33 |
| Chromatin | 33 |
| Nuclear matrix | 35 |
| Identification of DNA regulatory sequences | 35 |
| Identification of DNA binding proteins | 36 |

| | | |
|-----|--|----|
| | Integration of peptide and steroid hormone actions | 38 |
| 1.4 | Pituitary–Hypothalamic Integration of Hormone Action | 39 |
| | Structure–function relationship of pituitary and hypothalamus | 39 |
| | Posterior pituitary hormones | 40 |
| | Anterior pituitary hormones | 41 |
| | Hypothalamic releasing and release-inhibiting hormones | 41 |
| | Control of hormone release | 42 |
| | Questions for Study and Discussion | 44 |
| | Further Reading | 46 |
| 2 | Endocrine Methodologies | 47 |
| 2.1 | Methods for Studying Endocrine Function | 47 |
| | Introduction | 47 |
| | Experimental model systems | 47 |
| | Whole animal model | 48 |
| | Isolated organs or tissues | 50 |
| | <i>In vitro</i> models | 51 |
| | Use of agonists, antagonists and inhibitors | 53 |
| | Use of antibodies | 54 |
| | Immune response | 54 |
| | Detection and purification of antibodies | 56 |
| | Monoclonal antibodies | 56 |
| | Use of antibodies to identify the site of hormone synthesis or target tissue | 57 |
| 2.2 | Measurement of Hormones and Receptors | 57 |
| | Assay of hormones | 58 |
| | Types of hormone assays | 59 |
| | Bioassays | 59 |
| | Competitive binding assays (immunoassays) | 60 |
| | Chemical assays | 65 |
| | Liquid chromatography | 65 |
| | Gas chromatography | 66 |
| | Electrophoresis | 67 |
| | Measurements of hormone–receptor binding | 67 |
| 2.3 | Methods for the Production of Hormones | 70 |
| | Steroids and non-protein hormones | 70 |
| | Protein and peptide hormones | 71 |
| | Determination of amino acid sequence | 72 |
| | Peptide and protein synthesis | 74 |
| | Non-peptide mimics of peptides | 75 |
| | Production of recombinant proteins | 76 |
| 2.4 | Manipulation of Endocrine Function | 77 |
| | Introduction | 77 |
| | Hormone delivery methods | 78 |
| | Types of sustained-release devices | 78 |
| | Pulsatile release of hormone | 80 |
| | Hormone residues | 82 |
| | Immunomodulation of hormone action | 83 |
| | Transgenic animals | 84 |
| | Uses for transgenic animals | 84 |
| | Production of transgenic animals | 85 |
| | Questions for Study and Discussion | 86 |
| | Further Reading | 87 |

| | |
|---|-----------|
| 3 Manipulation of Growth and Carcass Composition | 89 |
| 3.1 Overview | 89 |
| Effects on growth, feed efficiency and lean yield | 89 |
| Muscle development | 91 |
| Adipose tissue development | 92 |
| 3.2 Anabolic Steroids and Analogues | 92 |
| Applications of anabolic steroids | 92 |
| Mechanism of action | 95 |
| Direct effects | 95 |
| Indirect effects | 96 |
| Delivery systems | 97 |
| Safety issues | 98 |
| 3.3 Use of Intact (Uncastrated) Male Pigs for Pork Production | 99 |
| Advantages and problems of intact male pigs | 99 |
| Effects of sex steroid hormones | 100 |
| Description of boar taint | 101 |
| Measurement of boar taint | 102 |
| Use of tainted meat in processed products | 103 |
| Metabolism of androstenone and skatole | 103 |
| Factors affecting boar taint | 104 |
| Diet and management | 104 |
| Genetic factors | 106 |
| Immunological methods to control boar taint | 107 |
| 3.4 Somatotrophin | 107 |
| Control of ST release | 108 |
| Mechanism of action of ST | 111 |
| Direct effects | 111 |
| ST receptors | 111 |
| Metabolic effects | 111 |
| Indirect effects | 113 |
| Delivery/dose effects | 113 |
| Safety/quality aspects | 114 |
| 3.5 Adipokines | 114 |
| Leptin | 115 |
| Leptin receptors | 115 |
| Involvement in energy metabolism and reproduction | 116 |
| Applications | 117 |
| Adiponectin | 117 |
| Inflammatory cytokines | 118 |
| 3.6 Thyroid Hormones | 118 |
| Synthesis and metabolism | 118 |
| Transporters and receptors | 120 |
| Metabolic effects | 120 |
| Effects on growth and development | 121 |
| Applications | 122 |
| 3.7 β -Adrenergic Agonists | 122 |
| Mechanism of action | 123 |
| β -AA structures | 123 |
| β -AA receptors | 123 |
| Physiological responses to β -AA | 125 |
| Delivery/dose | 127 |
| Safety aspects | 127 |
| Alternative approaches for using growth promoters | 128 |

| | | |
|------|---|-----|
| 3.8 | Dietary Chromium and Insulin | 128 |
| | Insulin | 129 |
| | Glucagon | 129 |
| | Potential mechanisms of action of chromium | 130 |
| | Physiological effects | 131 |
| | Dose | 132 |
| | Safety issues | 133 |
| 3.9 | Dietary Polyunsaturated Fatty Acids | 133 |
| | Mechanism of action | 134 |
| | Linoleic acid, linolenic acid and γ -linolenic acid | 135 |
| | Applications | 136 |
| | Conjugated linoleic acid | 137 |
| | Metabolic effects of CLA isomers | 138 |
| | Mechanism of action of CLA | 138 |
| | CLA preparations | 138 |
| 3.10 | Regulation of Food Intake | 139 |
| | Introduction | 139 |
| | Central nervous system hormones | 141 |
| | Orexigenic hypothalamic neuropeptides: NPY and AgRP | 141 |
| | Anorexigenic hypothalamic neuropeptides: POMC/MSH and CART | 141 |
| | Downstream pathway: orexin and MCH | 141 |
| | Gastrointestinal tract hormones | 142 |
| | Ghrelin | 142 |
| | Cholecystokinin | 143 |
| | Proglucagon-derived peptides | 144 |
| | Peptide YY and pancreatic polypeptide | 145 |
| | Peripheral signals of adiposity | 145 |
| | Applications of dietary control | 145 |
| 3.11 | Antibiotics, Antimicrobials and Other Factors | 146 |
| 3.12 | Effects of Stress on Meat Quality | 148 |
| | Pale, soft, exudative and dark, firm, dry meat | 148 |
| | Porcine stress syndrome | 149 |
| | Testing for PSS | 150 |
| | Endocrine factors that affect PSS pigs and PSE pork | 152 |
| | Manipulations to reduce the incidence of PSE | 153 |
| | Summary and Conclusions | 154 |
| | Questions for Study and Discussion | 154 |
| | Further Reading | 155 |
| 4 | Endocrine Effects on Animal Products | 159 |
| 4.1 | Mammary Gland Development and Milk Production | 159 |
| | Introduction | 159 |
| | Mammary gland development | 159 |
| | Involution and the dry period | 161 |
| | Model systems for studying mammary gland development and function | 162 |
| | <i>In vitro</i> cell culture systems | 162 |
| | Whole animal studies | 162 |
| | Hormones and mammary gland development (mammogenesis) | 162 |
| | Hormones and initiation of lactogenesis | 164 |
| | Maintenance of lactation (galactopoiesis) | 165 |
| | Hormonal effects | 165 |
| | Milk removal | 166 |
| | Effect of bST | 166 |

| | |
|---|------------|
| Mechanism of action | 167 |
| Delivery | 168 |
| Safety concerns of bST use | 168 |
| Factors affecting milk composition | 169 |
| Milk protein | 169 |
| Milk fat | 170 |
| Metabolic diseases related to lactation | 170 |
| Ketosis | 170 |
| Milk fever | 171 |
| Hormones involved | 171 |
| Predisposing factors | 172 |
| Treatment and prevention | 172 |
| 4.2 Egg Production | 173 |
| Sexual development | 174 |
| Hormonal effects | 174 |
| Genetic effects | 175 |
| Regulation of follicular development and egg production | 176 |
| Application | 178 |
| Manipulation of moulting | 179 |
| Endocrine effects | 179 |
| Applications | 179 |
| Eggshell formation | 180 |
| Shell matrix | 181 |
| Calcium metabolism | 182 |
| Calcium absorption in the intestine | 182 |
| Calcium transport in bone | 182 |
| Calcium transport in the shell gland | 183 |
| Applications | 184 |
| 4.3 Wool Production and Endocrine Defleecing | 185 |
| Introduction | 185 |
| Defleecing methods | 186 |
| Model systems used to study function of follicles | 187 |
| Growth factor effects on hair and wool follicles | 187 |
| Insulin-like growth factors | 187 |
| Fibroblast growth factors | 187 |
| Transforming growth factor- β | 188 |
| EGF family of growth factors | 188 |
| EGF receptor | 189 |
| Effects of EGF on follicles | 189 |
| Other effects of EGF | 190 |
| Summary of growth factors affecting fibre growth | 190 |
| Questions for Study and Discussion | 190 |
| Further Reading | 191 |
| 5 Endocrine Manipulation of Reproduction | 193 |
| 5.1 Manipulation of Reproduction in Mammals | 193 |
| Sexual differentiation and maturation | 193 |
| Differentiation of the gonads and ducts | 194 |
| Differentiation of the brain | 194 |
| Sex differentiation in cattle, sheep and pigs | 195 |
| Sex-determining genes | 196 |
| Regulation of meiosis in germ cells | 197 |
| Regulation of steroidogenesis | 197 |

| | |
|--|------------|
| Regulation of the oestrous cycle | 198 |
| Overview of the oestrous cycle | 199 |
| Follicular development | 199 |
| Oestrus and ovulation | 202 |
| Luteal phase | 202 |
| Manipulation of the oestrous cycle | 203 |
| Hormone preparations for manipulating reproduction | 203 |
| Use of hormone agonists to control fertility | 208 |
| Detection and synchronization of oestrus | 210 |
| Methods for detection of oestrus | 210 |
| Oestrous behaviour | 210 |
| Milk progesterone | 210 |
| Strategies for synchronizing oestrus | 211 |
| Prostaglandin F _{2a} -based systems | 211 |
| GnRH and the Ovsynch® protocol | 212 |
| Progestin-based systems | 213 |
| Superovulation and embryo transfer | 214 |
| <i>In vitro</i> production of embryos | 214 |
| Pregnancy, parturition and the postpartum interval | 215 |
| Recognition and maintenance of pregnancy | 216 |
| Induction of abortion/parturition | 217 |
| Postpartum interval | 218 |
| Cystic ovarian disease | 218 |
| Effects of nutrition | 218 |
| Effects of stress | 219 |
| Puberty and seasonality | 219 |
| Inducing puberty | 219 |
| Seasonal effects on reproduction | 220 |
| Regulation of LH production | 221 |
| Advancing cyclicity in seasonal breeders | 222 |
| Immunological control of reproduction | 223 |
| 5.2 Endocrine Manipulations in Aquaculture | 224 |
| Control of reproduction | 225 |
| Sex reversal | 225 |
| Hormonal treatments for sex reversal | 225 |
| Indirect methods | 226 |
| Induction of spawning | 227 |
| Endocrine control of gametogenesis | 227 |
| Applications | 228 |
| Endocrine effects on growth and nutrient utilization | 229 |
| Applications | 230 |
| Effects of stress on reproduction, growth and immunity | 230 |
| Applications | 232 |
| Questions for Study and Discussion | 232 |
| Further Reading | 233 |
| 6 Effects on Animal Behaviour, Health and Welfare | 235 |
| 6.1 Control of Broodiness in Poultry | 235 |
| Applications | 236 |
| 6.2 Applications of Pheromones | 237 |
| Introduction | 237 |
| Types of pheromones | 237 |
| Chemistry of pheromones | 238 |

| | |
|---|-----|
| Pheromone production and release | 238 |
| Detection of pheromones | 239 |
| Vertebrate pheromones | 240 |
| Rodents | 240 |
| Pigs | 241 |
| Cattle | 242 |
| Sheep and goats | 242 |
| Fish | 242 |
| Other | 243 |
| Insect pheromones | 243 |
| Applications | 244 |
| Pest control | 244 |
| Population monitoring | 245 |
| Mating disruption | 245 |
| Mass trapping | 245 |
| Insect management | 246 |
| Reproduction control in mammals | 246 |
| 6.3 Effects of Stress | 247 |
| What is stress? | 247 |
| Hormonal responses to stress | 247 |
| SA system | 248 |
| HPA axis | 249 |
| CRH and CRH receptors | 249 |
| Role of various hormones in stress responses | 251 |
| Assessment of stress | 252 |
| Behavioural and physiological measures | 252 |
| Hormonal measures | 253 |
| Issues related to sampling | 254 |
| Effects of stress on the immune system and disease resistance | 255 |
| Overview of the immune system | 255 |
| Stress effects on the immune system | 256 |
| Effects of stress on reproduction | 258 |
| Effects of stress on growth performance | 259 |
| Summary | 261 |
| 6.4 Endocrine Applications in Toxicology | 261 |
| Endocrine disruptors or modulators | 261 |
| Assessment of endocrine disruptor activity | 262 |
| Tier 1 screening tests for EDCs | 263 |
| Tier 2 multi-generational tests | 264 |
| Sources of endocrine disruptors | 265 |
| Plant-derived endocrine modulators | 265 |
| Xenobiotic endocrine modulators | 266 |
| Indirect mechanisms of action | 267 |
| Effects on hormone metabolism | 267 |
| Effects on thyroid function | 268 |
| Effects on adrenal function | 269 |
| Effects on CNS function and behaviour | 269 |
| Summary | 270 |
| Questions for Study and Discussion | 270 |
| Further Reading | 271 |
| Index | 273 |