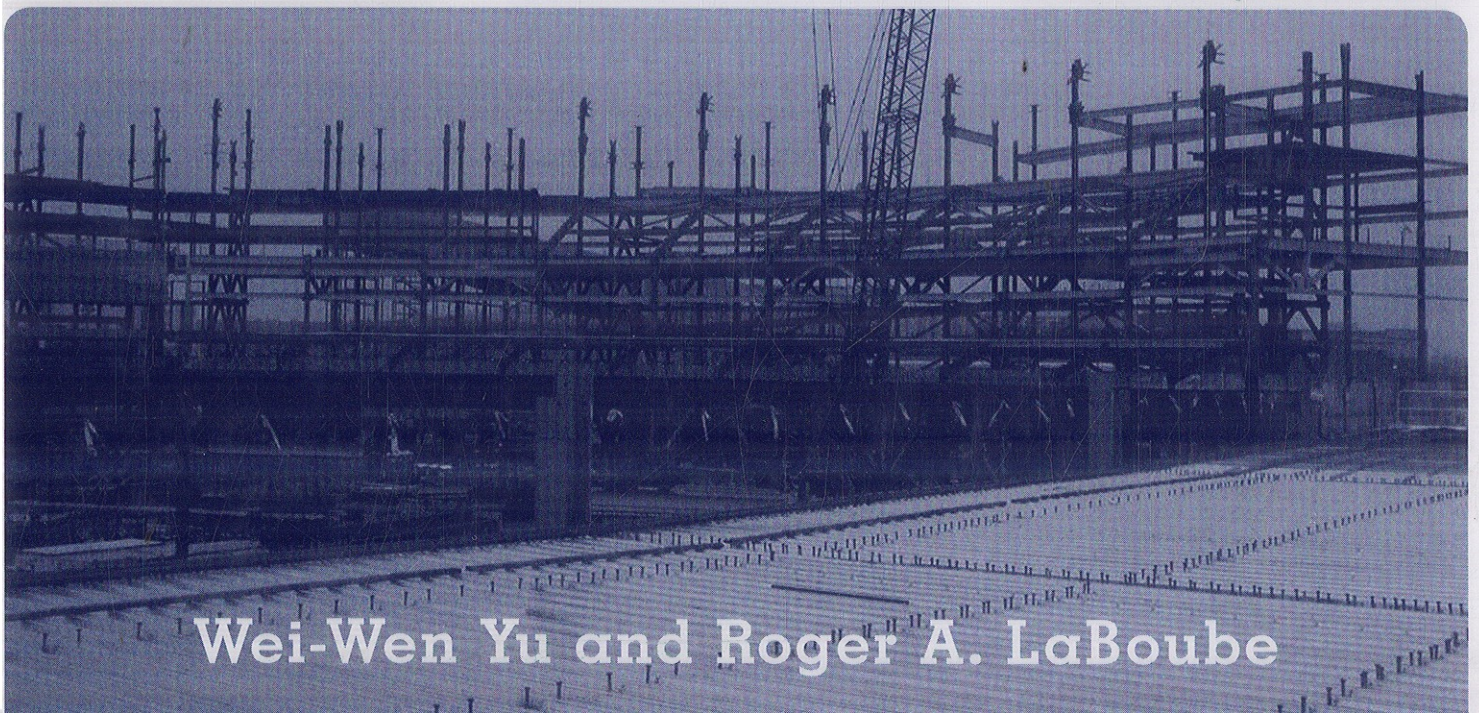
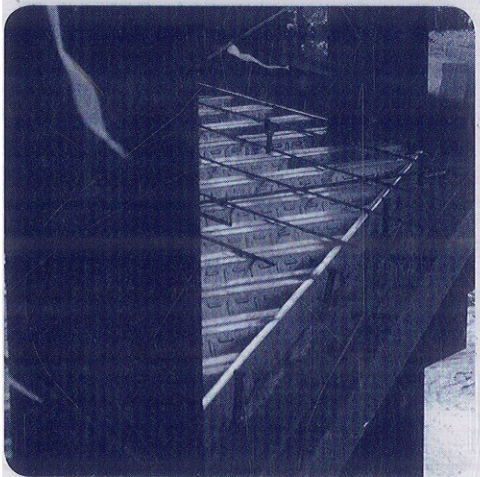


Cold-Formed Steel Design

FOURTH EDITION



Wei-Wen Yu and Roger A. LaBoube

CONTENTS

	Preface	ix
CHAPTER 1	INTRODUCTION	1
	1.1 General Remarks	1
	1.2 Types of Cold-Formed Steel Sections and Their Applications	2
	1.3 Standardized Metal Buildings and Industrialized Housing	8
	1.4 Methods of Forming	12
	1.5 Research and Design Specifications	17
	1.6 General Design Considerations of Cold-Formed Steel Construction	20
	1.7 Economic Design and Optimum Properties	26
CHAPTER 2	MATERIALS USED IN COLD-FORMED STEEL CONSTRUCTION	27
	2.1 General Remarks	27
	2.2 Yield Stress, Tensile Strength, and Stress–Strain Curve	33
	2.3 Modulus of Elasticity, Tangent Modulus, and Shear Modulus	34
	2.4 Ductility	34
	2.5 Weldability	36
	2.6 Fatigue Strength and Toughness	37
	2.7 Influence of Cold Work on Mechanical Properties of Steel	37
	2.8 Utilization of Cold Work of Forming	40
	2.9 Effect of Temperature on Mechanical Properties of Steel	42
	2.10 Testing of Full Sections and Flat Elements	43
	2.11 Residual Stresses Due to Cold Forming	44
	2.12 Effect of Strain Rate on Mechanical Properties	46
CHAPTER 3	STRENGTH OF THIN ELEMENTS AND DESIGN CRITERIA	47
	3.1 General Remarks	47
	3.2 Definitions of Terms	47
	3.3 Design Basis	50
	3.4 Serviceability	59

	3.5	Structural Behavior of Compression Elements and Design Criteria	59
	3.6	Perforated Elements and Members	91
	3.7	Plate Buckling of Structural Shapes	95
	3.8	Additional Information	95
CHAPTER 4		FLEXURAL MEMBERS	97
	4.1	General Remarks	97
	4.2	Bending Strength and Deflection	97
	4.3	Design of Beam Webs	156
	4.4	Bracing Requirements of Beams	182
	4.5	Torsional Analysis of Beams and Combined Bending and Torsional Loading	190
	4.6	<i>Additional Information on Beams</i>	190
CHAPTER 5		COMPRESSION MEMBERS	191
	5.1	General Remarks	191
	5.2	Yielding	191
	5.3	Flexural Column Buckling	192
	5.4	Torsional Buckling and Flexural-Torsional Buckling	194
	5.5	Effect of Local Buckling on Column Strength	200
	5.6	Distortional Buckling Strength of Compression Members	201
	5.7	Effect of Cold Work on Column Buckling	202
	5.8	North American Design Formulas for Concentrically Loaded Compression Members	203
	5.9	Effective Length Factor K	207
	5.10	Built-Up Compression Members	209
	5.11	Bracing of Axially Loaded Compression Members	209
	5.12	Design Examples	210
	5.13	Compression Members Having One Flange Fastened to Decks or Panels	218
	5.14	Wall Studs	220
	5.15	Additional Information on Compression Members	221
CHAPTER 6		COMBINED AXIAL LOAD AND BENDING	223
	6.1	General Remarks	223
	6.2	Combined Tensile Axial Load and Bending	224
	6.3	Combined Compressive Axial Load and Bending (Beam-Columns)	225
	6.4	North American Design Criteria	232
	6.5	Design Examples	235
	6.6	Second-Order Analysis	248
	6.7	Additional Information on Beam-Columns	249
CHAPTER 7		CLOSED CYLINDRICAL TUBULAR MEMBERS	251
	7.1	General Remarks	251
	7.2	Types of Closed Cylindrical Tubes	251
	7.3	Flexural Column Buckling	251
	7.4	Local Buckling	252
	7.5	North American Design Criteria	255
	7.6	Design Examples	259

CHAPTER 8	CONNECTIONS	263
	8.1 General Remarks	263
	8.2 Types of Connectors	263
	8.3 Welded Connections	263
	8.4 Bolted Connections	281
	8.5 Screw Connections	292
	8.6 Other Fasteners	296
	8.7 Rupture Failure of Connections	299
	8.8 I- or Box-Shaped Compression Members Made by Connecting Two C-Sections	299
	8.9 I-Beams Made by Connecting Two C-Sections	301
	8.10 Spacing of Connections in Compression Elements	304
CHAPTER 9	SHEAR DIAPHRAGMS AND ROOF STRUCTURES	307
	9.1 General Remarks	307
	9.2 Steel Shear Diaphragms	307
	9.3 Structural Members Braced by Diaphragms	319
	9.4 Shell Roof Structures	329
	9.5 Metal Roof Systems	340
CHAPTER 10	CORRUGATED SHEETS	343
	10.1 General Remarks	343
	10.2 Applications	343
	10.3 Sectional Properties and Design of Arc- and Tangent-Type Corrugated Sheets	343
	10.4 Sectional Properties and Design of Trapezoidal-Type Corrugated Sheets	348
CHAPTER 11	COMPOSITE DESIGN	349
	11.1 General Remarks	349
	11.2 Steel-Deck-Reinforced Composite Slabs	349
	11.3 Composite Beams or Girders with Cold-Formed Steel Deck	350
CHAPTER 12	INTRODUCTION TO STAINLESS STEEL DESIGN	353
	12.1 General Remarks	353
	12.2 Differences between Specifications for Carbon Steels and Stainless Steels	355
CHAPTER 13	LIGHT-FRAME CONSTRUCTION	359
	13.1 General Remarks	359
	13.2 Framing Standards	359
	13.3 Design Guides	367
CHAPTER 14	COMPUTER-AIDED DESIGN	369
	14.1 General Remarks	369
	14.2 Computer Programs for Design of Cold-Formed Steel Structures	369

CHAPTER 15	DIRECT-STRENGTH METHOD	371
	15.1 General Remarks	371
	15.2 North American DSM Provisions	371
	15.3 Commentary on Appendix 1 (DSM)	373
	15.4 Direct-Strength Method Design Guide	376
	15.5 Design Examples	376
APPENDIX A	THICKNESS OF BASE METAL	381
APPENDIX B	TORSION	383
	B.1 Introduction	383
	B.2 Shear Center	383
	B.3 Torsional Stresses	384
	B.4 Design Criteria for Combined Bending and Torsional Loading	393
APPENDIX C	FORMULAS FOR COMPUTING CROSS-SECTIONAL PROPERTY β_y	395
APPENDIX D	DEFINITIONS OF TERMS	397
	NOMENCLATURE	401
	ACRONYMS AND ABBREVIATIONS	413
	CONVERSION TABLE	415
	REFERENCES	417
	INDEX	483