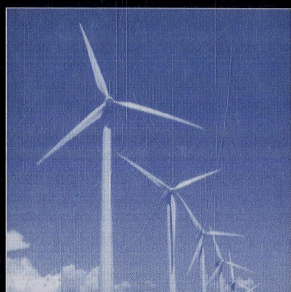
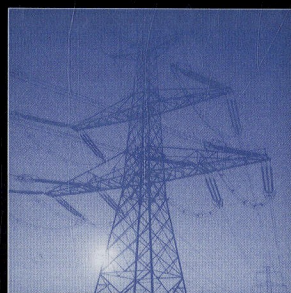
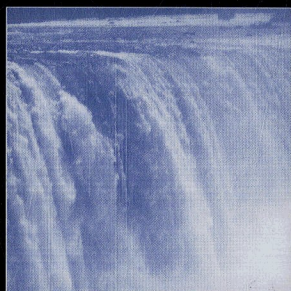


INTEGRATION OF Distributed Generation in the Power System



Math H.J. Bollen • Fainan Hassan

 **WILEY**

 **IEEE**
IEEE PRESS


IEEE PRESS
SERIES
ON POWER
ENGINEERING

Mohamed E. El-Hawary, *Series Editor*

CONTENTS

<i>PREFACE</i>	xi
<i>ACKNOWLEDGMENTS</i>	xiii
CHAPTER 1 <i>INTRODUCTION</i>	1
<hr/>	
CHAPTER 2 <i>SOURCES OF ENERGY</i>	6
<hr/>	
2.1 Wind Power	7
2.1.1 Status	7
2.1.2 Properties	7
2.1.3 Variations in Wind Speed	8
2.1.4 Variations in Production Capacity	10
2.1.5 The Weibull Distribution of Wind Speed	20
2.1.6 Power Distribution as a Function of the Wind Speed	22
2.1.7 Distribution of the Power Production	26
2.1.8 Expected Energy Production	29
2.2 Solar Power	30
2.2.1 Status	30
2.2.2 Properties	31
2.2.3 Space Requirements	32
2.2.4 Photovoltaics	33
2.2.5 Location of the Sun in the Sky	35
2.2.6 Cloud Coverage	39
2.2.7 Seasonal Variations in Production Capacity	42
2.2.8 Fast Variations with Time	46
2.3 Combined Heat-and-Power	50
2.3.1 Status	50
2.3.2 Options for Space Heating	51
2.3.3 Properties	52
2.3.4 Variation in Production with Time	53
2.3.5 Correlation Between CHP and Consumption	56
2.4 Hydropower	59
2.4.1 Properties of Large Hydro	60
2.4.2 Properties of Small Hydro	61
2.4.3 Variation with Time	61
2.5 Tidal Power	65
2.6 Wave Power	66
2.7 Geothermal Power	67
2.8 Thermal Power Plants	68

- 2.9 Interface with the Grid 71
 - 2.9.1 Direct Machine Coupling with the Grid 72
 - 2.9.2 Full Power Electronics Coupling with the Grid 73
 - 2.9.3 Partial Power Electronics Coupling to the Grid 75
 - 2.9.4 Distributed Power Electronics Interface 79
 - 2.9.5 Impact of the Type of Interface on the Power System 80
 - 2.9.6 Local Control of Distributed Generation 81

CHAPTER 3 *POWER SYSTEM PERFORMANCE***84**

- 3.1 Impact of Distributed Generation on the Power System 84
 - 3.1.1 Changes Taking Place 84
 - 3.1.2 Impact of the Changes 85
 - 3.1.3 How Severe Is This? 86
- 3.2 Aims of the Power System 87
- 3.3 Hosting Capacity Approach 88
- 3.4 Power Quality 91
 - 3.4.1 Voltage Quality 92
 - 3.4.2 Current Quality 92
 - 3.4.3 Multiple Generator Tripping 93
- 3.5 Voltage Quality and Design of Distributed Generation 95
 - 3.5.1 Normal Operation; Variations 96
 - 3.5.2 Normal Events 96
 - 3.5.3 Abnormal Events 97
- 3.6 Hosting Capacity Approach for Events 98
- 3.7 Increasing the Hosting Capacity 100

CHAPTER 4 *OVERLOADING AND LOSSES***102**

- 4.1 Impact of Distributed Generation 102
- 4.2 Overloading: Radial Distribution Networks 105
 - 4.2.1 Active Power Flow Only 105
 - 4.2.2 Active and Reactive Power Flow 108
 - 4.2.3 Case Study 1: Constant Production 109
 - 4.2.4 Case Study 2: Wind Power 110
 - 4.2.5 Case Study 3: Wind Power with Induction Generators 111
 - 4.2.6 Case Study 4: Solar Power with a Hotel 111
 - 4.2.7 Minimum Consumption 115
- 4.3 Overloading: Redundancy and Meshed Operation 116
 - 4.3.1 Redundancy in Distribution Networks 116
 - 4.3.2 Meshed Operation 117
 - 4.3.3 Redundancy in Meshed Networks 119
- 4.4 Losses 122
 - 4.4.1 Case Study 1: Constant Production 124
 - 4.4.2 Case Study 2: Wind Power 125
- 4.5 Increasing the Hosting Capacity 126
 - 4.5.1 Increasing the Loadability 126

- 4.5.2 Building New Connections 127
- 4.5.3 Intertrip Schemes 127
- 4.5.4 Advanced Protection Schemes 128
- 4.5.5 Energy Management Systems 131
- 4.5.6 Power Electronics Approach 133
- 4.5.7 Demand Control 136
- 4.5.8 Risk-Based Approaches 137
- 4.5.9 Prioritizing Renewable Energy 139
- 4.5.10 Dynamic Loadability 139

CHAPTER 5 *VOLTAGE MAGNITUDE VARIATIONS*
141

- 5.1 Impact of Distributed Generation 141
- 5.2 Voltage Margin and Hosting Capacity 144
 - 5.2.1 Voltage Control in Distribution Systems 144
 - 5.2.2 Voltage Rise Owing to Distributed Generation 146
 - 5.2.3 Hosting Capacity 147
 - 5.2.4 Induction Generators 149
 - 5.2.5 Measurements to Determine the Hosting Capacity 150
 - 5.2.6 Estimating the Hosting Capacity Without Measurements 151
 - 5.2.7 Choosing the Overvoltage Limit 153
 - 5.2.8 Sharing the Hosting Capacity 156
- 5.3 Design of Distribution Feeders 156
 - 5.3.1 Basic Design Rules 156
 - 5.3.2 Terminology 157
 - 5.3.3 An Individual Generator Along a Medium-Voltage Feeder 158
 - 5.3.4 Low-Voltage Feeders 163
 - 5.3.5 Series and Shunt Compensation 166
- 5.4 A Numerical Approach to Voltage Variations 168
 - 5.4.1 Example for Two-stage Boosting 168
 - 5.4.2 General Expressions for Two-Stage Boosting 170
 - 5.4.3 Single-Stage Boosting 171
 - 5.4.4 Microgeneration 171
- 5.5 Tap Changers with Line-Drop Compensation 174
 - 5.5.1 Transformer with One Single Feeder 174
 - 5.5.2 Adding a Generator 175
 - 5.5.3 Calculating the Hosting Capacity 177
 - 5.5.4 Multiple Feeders from the Same Transformer 178
- 5.6 Probabilistic Methods for Design of Distribution Feeders 181
 - 5.6.1 Need for Probabilistic Methods 181
 - 5.6.2 The System Studied 181
 - 5.6.3 Probability Density and Distribution Functions 182
 - 5.6.4 Distributions of Functions of Random Variables 182
 - 5.6.5 Mean and Standard Deviation 183
 - 5.6.6 Normal Distributions 184
 - 5.6.7 Stochastic Calculations Using Measurements 185
 - 5.6.8 Generation with Constant Production 190
 - 5.6.9 Adding Wind Power 191

- 5.7 Statistical Approach to Hosting Capacity 192
- 5.8 Increasing the Hosting Capacity 197
 - 5.8.1 New or Stronger Feeders 198
 - 5.8.2 Alternative Methods for Voltage Control 199
 - 5.8.3 Accurate Measurement of the Voltage Magnitude Variations 200
 - 5.8.4 Allowing Higher Overvoltages 201
 - 5.8.5 Risk-Based Approach to Overvoltages 202
 - 5.8.6 Overvoltage Protection 203
 - 5.8.7 Overvoltage Curtailment 204
 - 5.8.8 Dynamic Voltage Control 209
 - 5.8.9 Compensating the Generator's Voltage Variations 210
 - 5.8.10 Distributed Generation with Voltage Control 211
 - 5.8.11 Coordinated Voltage Control 218
 - 5.8.12 Increasing the Minimum Load 221

CHAPTER 6 *POWER QUALITY DISTURBANCES*

223

-
- 6.1 Impact of Distributed Generation 223
 - 6.2 Fast Voltage Fluctuations 225
 - 6.2.1 Fast Fluctuations in Wind Power 226
 - 6.2.2 Fast Fluctuations in Solar Power 228
 - 6.2.3 Rapid Voltage Changes 228
 - 6.2.4 Very Short Variations 230
 - 6.2.5 Spread of Voltage Fluctuations 233
 - 6.3 Voltage Unbalance 237
 - 6.3.1 Weaker Transmission System 237
 - 6.3.2 Stronger Distribution System 238
 - 6.3.3 Large Single-Phase Generators 240
 - 6.3.4 Many Single-Phase Generators 242
 - 6.4 Low-Frequency Harmonics 247
 - 6.4.1 Wind Power: Induction Generators 248
 - 6.4.2 Generators with Power Electronics Interfaces 250
 - 6.4.3 Synchronous Generators 251
 - 6.4.4 Measurement Example 252
 - 6.4.5 Harmonic Resonances 254
 - 6.4.6 Weaker Transmission Grid 266
 - 6.4.7 Stronger Distribution Grid 267
 - 6.5 High-Frequency Distortion 270
 - 6.5.1 Emission by Individual Generators 271
 - 6.5.2 Grouping Below and Above 2 kHz 274
 - 6.5.3 Limits Below and Above 2 kHz 275
 - 6.6 Voltage Dips 278
 - 6.6.1 Synchronous Machines: Balanced Dips 279
 - 6.6.2 Synchronous Machines: Unbalanced Dips 282
 - 6.6.3 Induction Generators and Unbalanced Dips 287
 - 6.7 Increasing the Hosting Capacity 291
 - 6.7.1 Strengthening the Grid 292

- 6.7.2 Emission Limits for Generator Units 292
- 6.7.3 Emission Limits for Other Customers 293
- 6.7.4 Higher Disturbance Levels 294
- 6.7.5 Passive Harmonic Filters 296
- 6.7.6 Power Electronics Converters 296
- 6.7.7 Reducing the Number of Dips 297
- 6.7.8 Broadband and High-Frequency Distortion 298

CHAPTER 7 PROTECTION

299

- 7.1 Impact of Distributed Generation 299
- 7.2 Overcurrent Protection 303
 - 7.2.1 Upstream and Downstream Faults 303
 - 7.2.2 Hosting Capacity 304
 - 7.2.3 Fuse-Recloser Coordination 305
 - 7.2.4 Inverse-Time Overcurrent Protection 308
- 7.3 Calculating the Fault Currents 310
 - 7.3.1 Upstream Faults 310
 - 7.3.2 Downstream Faults 320
 - 7.3.3 Induction Generators, Power Electronics, and Motor Load 325
- 7.4 Calculating the Hosting Capacity 326
- 7.5 Busbar Protection 333
- 7.6 Excessive Fault Current 334
- 7.7 Generator Protection 336
 - 7.7.1 General Requirements 336
 - 7.7.2 Insufficient Fault Current 337
 - 7.7.3 Noncontrolled Island Operation 340
 - 7.7.4 Islanding Detection 342
 - 7.7.5 Harmonic Resonance During Island Operation 354
 - 7.7.6 Protection Coordination 357
- 7.8 Increasing the Hosting Capacity 358
 - 7.8.1 Dedicated Feeder 359
 - 7.8.2 Increased Generator Impedance 360
 - 7.8.3 Generator Tripping 360
 - 7.8.4 Time-Current Setting 361
 - 7.8.5 Adding an Additional Circuit Breaker 362
 - 7.8.6 Directional Protection 362
 - 7.8.7 Differential or Distance Protection 363
 - 7.8.8 Advanced Protection Schemes 363
 - 7.8.9 Islanding Protection 365

CHAPTER 8 TRANSMISSION SYSTEM OPERATION

367

- 8.1 Impact of Distributed Generation 367
- 8.2 Fundamentals of Transmission System Operation 371
 - 8.2.1 Operational Reserve and $(N - 1)$ Criterion 372
 - 8.2.2 Different Types of Reserve 373
 - 8.2.3 Automatic or Manual Secondary Control 375

8.3	Frequency Control, Balancing, and Reserves	376
8.3.1	The Need for Reserves	376
8.3.2	Primary Control and Reserves	377
8.3.3	Secondary Control and Reserves	382
8.3.4	Tertiary Control and Reserves	389
8.3.5	Impact of Decay in Production on Reserves	393
8.4	Prediction of Production and Consumption	398
8.5	Restoration after a Blackout	403
8.6	Voltage Stability	405
8.6.1	Short-Term Voltage Stability	406
8.6.2	Long-Term Voltage Stability	410
8.7	Kinetic Energy and Inertia Constant	417
8.8	Frequency Stability	422
8.9	Angular Stability	425
8.9.1	One Area Against the Infinite Grid	425
8.9.2	Impact of Distributed Generation: Before the Fault	429
8.9.3	Impact of Distributed Generation: During the Fault	430
8.9.4	Impact of Distributed Generation: Critical Fault-Clearing Time	431
8.9.5	Impact of Distributed Generation: After the Fault	435
8.9.6	Impact of Distributed Generation: Importing Area	436
8.10	Fault Ride-Through	437
8.10.1	Background	437
8.10.2	Historical Cases	439
8.10.3	Immunity Requirements	440
8.10.4	Achieving Fault Ride-Through	445
8.11	Storage	447
8.12	HVDC and Facts	451
8.13	Increasing the Hosting Capacity	457
8.13.1	Alternative Scheduling of Reserves	457
8.13.2	Increasing the Transfer Capacity	458
8.13.3	Large-Scale Energy Storage	458
8.13.4	Distributed Generation as Reserve	459
8.13.5	Consumption as Reserve	460
8.13.6	Requirements on Distributed Generation	461
8.13.7	Reactive Power Control	461
8.13.8	Probabilistic Methods	462
8.13.9	Development of Standard Models for Distributed Generation	464