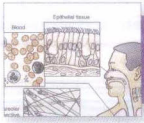


Detailed Contents



SECTION I FUNDAMENTALS

Chapter 1: The Body as a Whole, 1

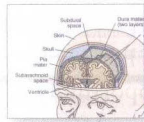
ANATOMY AND PHYSIOLOGY, 4
CHARACTERISTICS OF LIFE, 5
ORGANIZATION OF BODY STRUCTURE, 6

Chapter 2: Mechanisms of Health and Disease, 23

HOMEOSTASIS, 24
FEEDBACK LOOPS, 27
BIOLOGICAL RHYTHMS, 28
MECHANISMS OF DISEASE: PATHOLOGY, 29
PAIN, 37
MECHANISMS OF HEALTH: STRESS, 45
THE LIFE CYCLE, 49

Chapter 3: Terminology: Scientific, Medical, Social, and Cultural Communication, 57

LANGUAGE OF SCIENCE AND MEDICINE, 59
GENERAL STRUCTURAL PLAN OF THE BODY, 63
QUALITY-OF-LIFE TERMINOLOGY, 76
ANCIENT HEALING PRACTICES, 76
CLINICAL REASONING AND CHARTING, 90



SECTION II SYSTEMS OF CONTROL

Chapter 4: Nervous System Basics and the Central Nervous System, 98

NERVOUS SYSTEM BASICS: OVERVIEW OF THE NERVOUS SYSTEM, 100
NERVE CELL STRUCTURE, 101
NERVE CELL FUNCTIONS, 103
CENTRAL NERVOUS SYSTEM, 111
PATHOLOGIC CONDITIONS, 123

Chapter 5: Peripheral Nervous System, 133

BASICS OF THE PERIPHERAL NERVOUS SYSTEM, 134
REFLEX MECHANISMS, 139
AUTONOMIC NERVOUS SYSTEM, 147
FIVE BASIC SENSES, 152
PATHOLOGIC CONDITIONS OF THE PERIPHERAL NERVOUS SYSTEM, 158

Chapter 6: Endocrine System, 167

OVERVIEW OF ENDOCRINE GLANDS AND TISSUES, 168
ENDOCRINE GLANDS, TISSUES, AND THEIR HORMONES, 171
PATHOLOGIC CONDITIONS, 181



SECTION III KINESIOLOGY AND BIOMECHANICS

Chapter 7: Skeletal System, 192

SKELETAL SYSTEM BASICS, 193

BONES, 194
BONY LANDMARKS, 197
DIVISIONS OF THE SKELETON, 199
INDIVIDUAL BONY FRAMEWORK BY REGION, 202
PATHOLOGIC CONDITIONS, 214

Chapter 8: Joints, 234

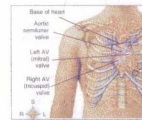
JOINT OVERVIEW, 235
JOINT MOTION, 244
IDENTIFICATION AND PALPATION OF SPECIFIC JOINTS, 253
INTEGRATING JOINT MOVEMENT INTO MASSAGE, 270
PATHOLOGIC CONDITIONS OF JOINTS, 273

Chapter 9: Muscles, 283

TERMINOLOGY, 284
MUSCLE STRUCTURE AND FUNCTION, 286
CONNECTIVE TISSUE COMPONENT OF MUSCLE, 298
INDIVIDUAL MUSCLES, 304
PATHOLOGIC CONDITIONS, 458

Chapter 10: Biomechanics Basics, 468

BIOMECHANICS, 469
KINETIC CHAIN, 476
ASSESSMENT BASED ON BIOMECHANICS, 494
PATHOLOGIC CONDITIONS, 537



SECTION IV REMAINING BODY SYSTEMS

Chapter 11: Integumentary, Cardiovascular, Lymphatic, and Immune Systems, 550

INTEGUMENTARY SYSTEM, 552
CARDIOVASCULAR SYSTEM, 562
LYMPHATIC SYSTEM, 583
IMMUNE SYSTEM, 589

Chapter 12: Respiratory, Digestive, Urinary, and Reproductive Systems, 603

RESPIRATORY SYSTEM, 604
DIGESTIVE SYSTEM, 613
URINARY SYSTEM AND FLUID ELECTROLYTE BALANCES, 626
REPRODUCTIVE SYSTEM, 634

Appendix A: Muscle Quick Reference Guide, 651

Appendix B: Diseases/Conditions and Indications/Contraindications for Massage Therapy, 663

Appendix C: Clinical Reasoning Activities, 686

Glossary, 689

Works Consulted, 699

Index, 703