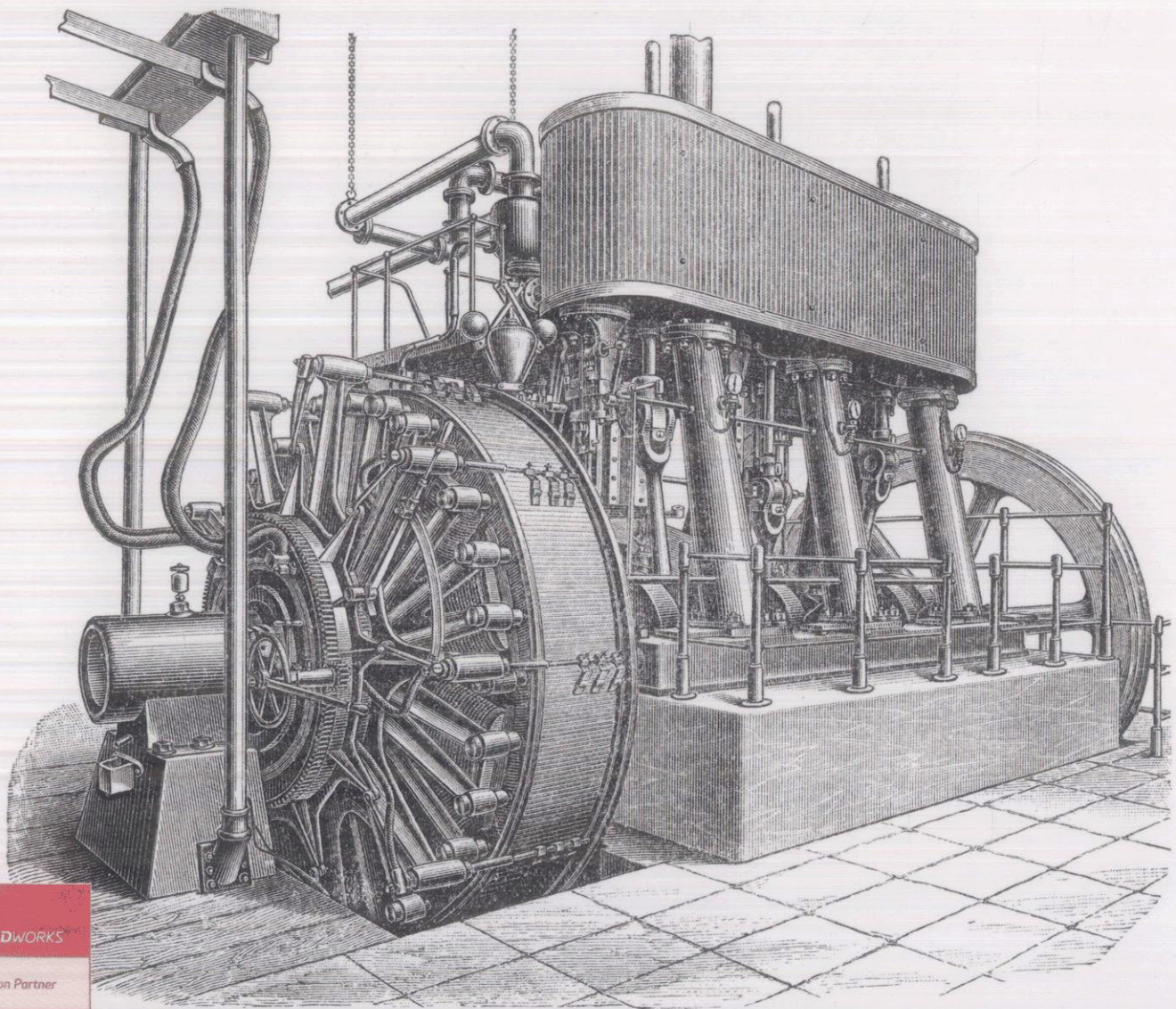


# Analysis of Machine Elements Using SolidWorks® Simulation 2013

John R. Steffen, Ph.D., P.E.



# Table of Contents

<b>Table of Contents</b>	i
<b>Preface</b>	vii
Intended Audience for this Text	vii
Using this SolidWorks Simulation User Guide	vii
Instructors Preface	ix
<b>Introduction</b>	
Finite Element Analysis	I-1
Nodes, Elements, Degrees of Freedom, and Equations	I-2
SolidWorks Simulation Elements	I-3
Solid Elements	I-3
Solid Element Degrees of Freedom	I-4
Shell Elements	I-5
Shell Elements Degrees of Freedom	I-6
Beam and Truss Elements	I-6
Meshing a Model	I-7
Stress Calculations for Nodes and Elements	I-8
Nodal Stress Values	I-9
Element Stress Values	I-10
Assumptions Applied to Linear Static Finite Element Analysis	I-10
Static Loading	I-10
Linear Material Behavior	I-11
Small Deformations	I-12
Closing Comments	I-12
Introduction to the SolidWorks Simulation User Interface	I-13
Orientation and Set-up of SolidWorks Work Environment	I-13
Customizing the SolidWorks Screen	I-16
Orientation to the SolidWorks Simulation Work Environment	I-20
Property Managers and Dialogue Boxes	I-22
Cautions and Other Facts You Should Know	I-24
<b>Chapter 1</b>	
<b>Stress Analysis Using SolidWorks Simulation</b>	
Learning Objectives	1-1
Problem Statement	1-1
Creating a Static Stress Analysis (Study)	1-3
Assigning Material to the Model	1-5
Applying Fixtures	1-6
Applying External Loads	1-8

## **Analysis of Machine Elements Using SolidWorks Simulation**

Meshing the Model	1-11
Running the Solution	1-13
Examination of Results	1-14
Understanding Default Graphical Results	1-14
Results Predicted by Classical Stress Equations	1-16
SolidWorks Simulation Results for Stress in Y-Direction	1-18
Using the Probe Tool	1-20
Customizing Graphs	1-27
Summary	1-30
To SAVE or Not to SAVE Files, That is the Question?	1-30
Option 1 - Close a File and SAVE its Contents Using the Original File Name	1-31
Option 2 - Close a File and SAVE its Contents Using a Different File Name	1-31
Option 3 - Close a File Without Saving Results	1-32
Re-open a SolidWorks Simulation File Saved Using Option 1 or Option 2	1-32
Exercises	1-34

## **Chapter 2**

### **Curved Beam Analysis**

Learning Objectives	2-1
Problem Statement	2-1
Creating a Static Analysis (Study)	2-2
Setting up the Simulation Toolbar	2-3
Assign Material Properties to the Model	2-5
Applying Fixtures	2-6
Applying External Load(s)	2-8
Inserting Split Lines	2-9
Applying Force to an Area Bounded by Split Lines	2-12
Meshing the Model	2-13
Solution	2-15
Examination of Results	2-16
Analysis of von Mises Stresses Within the Model	2-16
Verification of Results	2-19
Results Predicted by Classical Stress Equations	2-19
Comparison with Finite Element Results	2-21
Assessing Safety Factor	2-25
Alternate Stress Display Option	2-31
Determining Reaction Forces	2-32
Logging Out of the Current Analysis	2-33
Exercises	2-34

## **Chapter 3**

### **Stress Concentration Analysis**

Learning Objectives	3-1
Problem Statement	3-1

Create a Static Analysis (Study)	3-2
Defeaturing the Model	3-3
Assign Material Properties to the Model	3-4
Apply Fixtures and External Loads	3-4
Meshing the Model	3-6
Solution	3-7
Examination of Results	3-7
Stress Plots	3-7
Creating a “Copy” of a Plot	3-11
Displacement Plot	3-13
Creating New Studies	3-15
Basic Parts of the Graphical User Interface	3-15
Study Using High Quality Elements and COARSE Mesh Size	3-17
Method 1 – Item by Item Copying	3-17
Study Using High Quality Elements and DEFAULT Mesh Size	3-20
Method 2 – Copying Multiple Items Simultaneously	3-20
Study Using High Quality Elements and FINE Mesh Size	3-22
Method 3 – Duplicating an Entire Study	3-22
Study Using High Quality Elements and MESH CONTROL	3-25
Summary	3-30
Results Analysis	3-30
Create Multiple Viewports	3-31
What Can Be Learned from this Example?	3-33
Other Uses of the Copy Feature	3-33
Comparison of Classical and FEA Results	3-37
Exercises	3-39

## Chapter 4

### Thin and Thick Wall Pressure Vessels

Learning Objectives	4-1
<b>Thin-Wall Pressure Vessel (Using Shell Elements)</b>	4-1
Problem Statement	4-1
Understanding System Default Settings	4-4
Creating a Static Analysis Using Shell Elements	4-10
Converting a Solid Model to a Shell Model	4-11
Open a New Simulation Study	4-15
Assign Material Properties	4-15
Define Shell Thickness	4-15
Assign Fixtures and External Loads	4-16
Symmetry Restraints Applied	4-16
Pressure Load Applied	4-20
Mesh the Model	4-21
Solution	4-23
Results Analysis	4-23
Results Comparison (Tangential Stress = $\sigma_1$ on Cylindrical Surface)	4-25



## **Analysis of Machine Elements Using SolidWorks Simulation**

Other Meaningful Results Comparisons	4-27
Guidance for Determining Symmetry Fixtures	4-27
Closing Observations	4-29
Logging Out of the Current Analysis	4-30

<b>Thick Wall Pressure Vessel</b>	4-31
Problem Statement	4-31
Defining the Study	4-32
Assign Material Properties	4-33
Define Fixtures and External Loads	4-33
Create a Duplicate Study	4-36
Mesh the Model – Default Size Standard Mesh	4-36
Mesh the Model – Fine Size Standard Mesh	4-37
Solution	4-39
Results Analysis	4-39
Displacement Analysis	4-39
von Mises Stress Analysis	4-41
Tangential Stress Analysis	4-41
Adjusting Stress Magnitude Display Parameters	4-44
Using Section Clipping to Observe Stress Results	4-47
Exercises	4-51

## **Chapter 5**

### **Interference Fit Analysis**

Learning Objectives	5-1
Problem Statement	5-1
Interference Check	5-2
Create a Static Analysis (Study)	5-3
Assign Material Properties to the Model	5-4
SolidWorks Simulation Default Connection Definition	5-4
Defeature and Simplify the Model	5-5
Apply Fixtures	5-6
Reduce Model Size Using Symmetry	5-6
Define Symmetry Restraints (Fixtures)	5-7
Apply Fixtures to Eliminate Rigid Body Motion	5-9
Use Contact Sets to Define a Shrink Fit	5-11
Mesh the Model and Run the Solution	5-14
Examination of Results	5-15
Default Stress Plot	5-15
Stress Plots in a Cylindrical Coordinate System	5-18
Tangential (Circumferential or Hoop) Stress	5-18
Radial Stress	5-21
Verification of Results	5-23
Stress Predicted by Classical Interference Fit Equations	5-23
Stress Predicted by Finite Element Analysis	5-24

Radial Stress Comparison	5-24
Tangential Stress Comparison	5-26
Quantifying Radial Displacements	5-27
Generating a Report	5-30
Exercises	5-32

## **Chapter 6**

### **Contact Analysis**

Learning Objectives	6-1
Problem Statement	6-1
Preparing the Model for Analysis	6-2
Add Reference Planes	6-3
Insert Split Lines	6-4
Create the Assembly Model	6-5
Cut Model on Symmetry Plane	6-10
Create a Finite Element Analysis (Study)	6-13
Assign Material Properties	6-13
Assign Fixtures and External Loads	6-13
Symmetry and Immovable Restraints	6-13
Connections Define Contact Conditions	6-14
Apply a Directional Load	6-16
Mesh the Model and Run the Solution	6-19
Results Analysis	6-19
Von Mises Stress	6-19
Iso Clipping	6-20
Animating Stress Results	6-22
Displacement Results	6-23
Contact Pressure/Stress	6-24
Exercises	6-26

## **Chapter 7**

### **Bolted Joint Analysis**

Learning Objectives	7-1
Problem Statement	7-1
Create a Static Analysis (Study)	7-2
Assign Material Properties to the Model	7-2
Apply External Loads and Fixtures	7-3
Traditional Loads and Fixtures	7-3
Define Bolted Joint Restraints	7-4
Define Local Contact Conditions	7-11
Mesh the Model and Run Solution	7-13
Results Analysis for the Downward External Load	7-16
von Mises Stress	7-16
Bolt Forces (for Downward Load)	7-18
Define a New Study with the Applied Force Acting Upward	7-19

## **Analysis of Machine Elements Using SolidWorks Simulation**

Results Analysis for the Upward External Load	7-20
von Mises Stress	7-20
Bolt Forces (for Upward Load)	7-23
Bolt Clamping Pressure	7-26
Summary	7-30
Exercises	7-31

## **Chapter 8 Design Optimization**

Learning Objectives	8-1
Problem Statement	8-1
Complete and Run the Initial Study	8-2
Generating an Optimization Design Study	8-6
Understanding Optimization Design Terminology	8-7
Selecting and Specifying Design Parameters (Variables)	8-9
Define Constraints and their Sensors	8-14
Define the Stress Constraint and Sensor	8-14
Define the Displacement Constraint and Sensor	8-15
Define a Goal and its Sensor	8-17
Overview of Results	8-18
General Observations	8-19
Local Trend Graphs	8-20
Local Trend Graph of the Design Goal versus a Design Variable	8-20
Local Trend Graph of a Constraint versus a Design Variable	8-21
Closing Observations	8-23
Exercises	8-25

## **APPENDIX A**

Organizing Assignments using MS Word®	A-1
---------------------------------------	-----

## **APPENDIX B**

Alternative Method to Alter Graphics Area Background color	B-1
--	-----

## **INDEX**

Index-1
---------