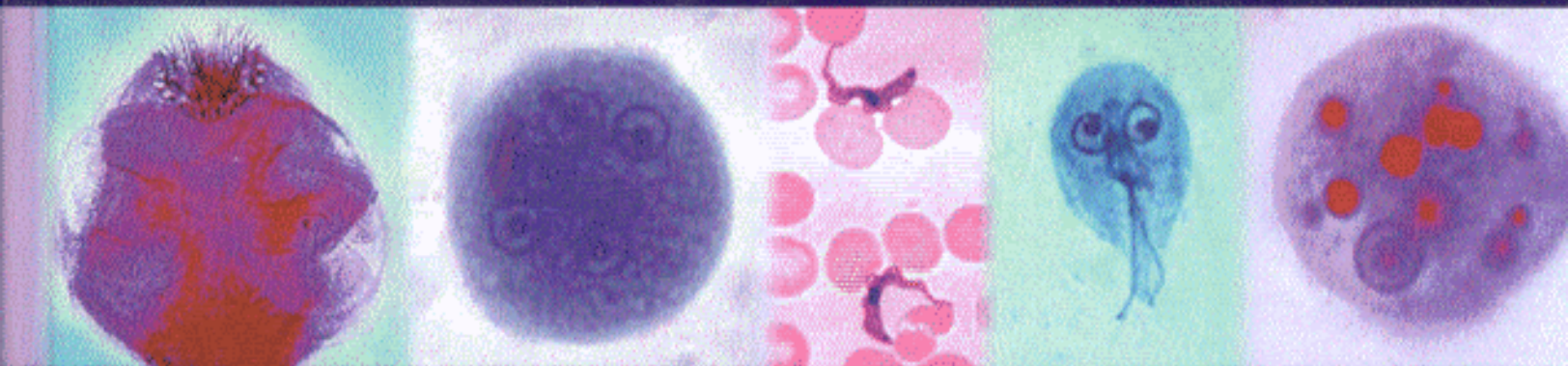


FOURTH EDITION

Diagnostic Medical Parasitology



Lynne Shore Garcia

Contents

Preface xv
Acknowledgments xix

PART I **Clinically Important Human Parasites I**

1 Philosophy and Approach to Diagnostic Parasitology 3

2 Intestinal Protozoa: Amebae 6

Entamoeba histolytica 6
Entamoeba dispar 20
Entamoeba hartmanni 22
Entamoeba coli 22
Entamoeba polecki 24
Entamoeba gingivalis 25
Endolimax nana 25
Iodamoeba bütschlii 26
Blastocystis hominis 28

3 Intestinal Protozoa: Flagellates and Ciliates 36

Giardia lamblia 36
Dientamoeba fragilis 49
Trichomonas hominis (*Pentatrichomonas hominis*) 51
Trichomonas tenax 52
Chilomastix mesnili 52
Enteromonas hominis 52
Retortamonas intestinalis 53
Balantidium coli 54

4 Intestinal Protozoa (Coccidia and Microsporidia) and Algae 60

Cryptosporidium parvum 60

Cyclospora cayetanensis 76
Isospora belli 82
Sarcocystis spp. 85
Microsporidia 87
Algae (*Prototheca*) 97

5 Protozoa from Other Body Sites 106

Naegleria fowleri 107
Acanthamoeba spp. 112
Balamuthia mandrillaris (Leptomyxid ameba) 119
Trichomonas vaginalis 120

6 Tissue Protozoa 132

Toxoplasma gondii 132
Pneumocystis carinii 142

7 Malaria and Babesiosis 159

Malaria 159
Babesiosis 192

8 Leishmaniasis 205

Old World leishmaniasis 206
Cutaneous 206
Visceral 212
New World leishmaniasis 220
Cutaneous 220
Visceral 228

9 Trypanosomiasis 235

African trypanosomiasis 235
Trypanosoma brucei gambiense 235
Trypanosoma brucei rhodesiense 243
American trypanosomiasis 246
Trypanosoma cruzi 246
Trypanosoma rangeli 257

10 Intestinal Nematodes 265

- Ascaris lumbricoides* 266
Enterobius vermicularis 274
Trichuris trichiura 277
Capillaria philippinensis 280
Hookworms (*Ancylostoma duodenale* and *Necator americanus*) 281
Trichostrongylus spp. 285
Strongyloides spp. 286

11 Tissue Nematodes 296

- Trichinella* spp. 296
Baylisascaris procyonis 307
Lagochilascaris minor 309
Toxocara canis and *T. cati* (visceral larva migrans and ocular larva migrans) 309
Ancylostoma braziliense and *A. caninum* (cutaneous larva migrans) 312
Human eosinophilic enteritis 314
Dracunculus medinensis 314
Angiostrongylus cantonensis (cerebral angiostrongyliasis) 317
Angiostrongylus costaricensis (abdominal angiostrongyliasis) 319
Gnathostoma spinigerum 320
Anisakis spp., *Phocanema* spp., *Contracaecum* spp., and *Pseudoterranova* spp. (larval nematodes acquired from saltwater fish) 322
Capillaria hepatica 324
Thelazia spp. 325

12 Filarial Nematodes 329

- Wuchereria bancrofti* 331
Brugia malayi 339
Brugia timori 341
Zoonotic *Brugia* infections 341
Tropical pulmonary eosinophilia 341
Loa loa 342
Mansonella ozzardi 344
Mansonella perstans 346
Mansonella streptocerca 346
Onchocerca volvulus 347
Dirofilaria immitis 354
Other filarial infections 355

13 Intestinal Cestodes 363

- Diphyllobothrium latum* 363
Taenia solium 368
Taenia saginata 377

- Taenia saginata asiatica* (Asian *Taenia*) 379
Hymenolepis nana 380
Hymenolepis diminuta 382
Dipylidium caninum 383

14 Tissue Cestodes: Larval Forms 386

- Echinococcus granulosus* (cystic disease, hydatid disease) 386
Echinococcus multilocularis (alveolar disease, hydatid disease) 396
Echinococcus oligarthrus and *Echinococcus vogeli* (polycystic hydatid disease) 401
Multiceps spp. (*Taenia multiceps*, *Taenia serialis*) (coenurosis) 403
Spirometra mansonoides and *Diphyllobothrium* spp. (sparganosis) 403
NOTE: *Taenia solium* (cysticercosis) is discussed in chapter 13.

15 Intestinal Trematodes 413

- Fasciolopsis buski* 413
Echinostoma ilocanum 418
Heterophyes heterophyes 419
Metagonimus yokogawai 420
Gastrodiscoides hominis 421

16 Liver and Lung Trematodes 424

- Liver Flukes 424
Clonorchis sinensis 424
Opisthorchis viverrini 430
Opisthorchis felineus 432
Fasciola hepatica 433
Fasciola gigantica 435
Less Common Liver Flukes 436
Dicrocoelium dendriticum and *Eurytrema pancreaticum* 436
Lung Flukes 438
Paragonimus spp. 438

17 Blood Trematodes: Schistosomes 445

- Schistosoma mansoni* 446
Schistosoma japonicum 456
Schistosoma mekongi 462
Schistosoma haematobium 465
Schistosoma intercalatum 470

18 Unusual Parasitic Infections 477

- Protozoa 477
Myxozoan parasites 477
Nematodes 481

- Oesophagostomum* spp. 481
Eustrongylides spp. 483
Mermis nigrescens 483
Micronema deletrix 485
Diocotophyma renale 485
Ternidens deminutus 486
Mammomonogamus laryngeus 486
Ascaris suum 488
Gongylonema pulchrum 488
- Cestodes 488**
Diplogonoporus spp. 489
Bertiella studeri 489
Inermicapsifer madagascariensis 490
Raillietina celebensis 490
Mesocestoides spp. 490
Taenia crassiceps 490
- Trematodes 491**
Alaria americana 491
Plagiorchis spp. 491
Neodiplostomum seoulense 491
Spelotrema brevicacaeca 492
Brachylaima sp. 492
Troglootrema salmincola 493
Stellantchasmus falcatus 493
Phaneropsolus bonnei, *Prosthodendrium molenkempfi* 494
Phaneropsolus spinicirrus 495
Gymnophalloides seoi 495
Metorchis conjunctus (North American liver fluke) 496
Schistosoma mattheei 497
- Pentastomids 499**
Armillifer spp., *Linguatula serrata*, and *Sebekia* spp. 499
- Acanthocephalans 500**
Macrocanthorhynchus hirudinaceus and *Moniliformis moniliformis* 500
- 19 Parasitic Infections in the Compromised Host 503**
Entamoeba histolytica 505
Free-Living Amebae 514
Giardia lamblia 517
Toxoplasma gondii 518
Pneumocystis carinii 520
Cryptosporidium parvum 522
Cyclospora cayetanensis 524
Isospora belli 526
Sarcocystis spp. 527
Microsporidia 527
Leishmania spp. 530
Strongyloides stercoralis 532
- Crusted (Norwegian) scabies 535
- 20 Nosocomial and Laboratory-Acquired Parasitic Infections 542**
Nosocomial infections 542
Nosocomial gastrointestinal infections 543
Cryptosporidium parvum 543
Giardia lamblia 546
Entamoeba histolytica 547
Microsporidia 548
Hymenolepis nana 548
Taenia solium 548
Nosocomial blood and tissue infections 548
Plasmodium spp. 548
Babesia spp. 548
Trypanosoma brucei gambiense and *T. brucei rhodesiense* 548
Trypanosoma cruzi 549
Leishmania donovani 549
Toxoplasma gondii 549
Pneumocystis carinii 549
Nosocomial infections with ectoparasites 549
Pediculus spp. and *Phthirus pubis* 549
Sarcoptes scabiei 549
Myiasis 550
Nosocomial infections in the pediatric patient 550
Cryptosporidium parvum 550
Giardia lamblia 550
Pediculus humanis capitis 550
Sarcoptes scabiei 550
Nosocomial infections in the compromised patient 550
Laboratory infections 552
Summary 554
- 21 Immunology of Parasitic Infections 557**
Amebiasis 559
Giardiasis 564
Toxoplasmosis 566
Pneumocystosis 568
African trypanosomiasis 569
American trypanosomiasis 569
Malaria 571
Summary 574
- 22 Antibody and Antigen Detection in Parasitic Infections 581**
Protozoal infections 584
Amebiasis 584
Babesiosis 586
Chagas' disease 586
Cryptosporidiosis 587

Cyclosporiasis	587	
Giardiasis	587	
Leishmaniasis	587	
Malaria	588	
Pneumocystosis	588	
Toxoplasmosis	589	
Trichomoniasis	591	
Helminth infections	591	
Cysticercosis	591	
Hydatid disease	591	
Fascioliasis	592	
Filariasis	593	
Paragonimiasis	593	
Schistosomiasis	594	
Strongyloidiasis	595	
Toxocariasis	596	
Trichinellosis	596	
Intradermal tests	597	
Casoni test	597	
Montenegro test	597	
23 Histologic Identification of Parasites	601	
24 Medically Important Arthropods	646	
Arthropods and their relationship to disease	646	
Biological vectors of microorganisms	646	
Bites and envenomation	647	
Tissue invasion	648	
Entomophobia and delusory parasitosis	652	
Class Insecta (insects)	652	
Order Diptera (flies, mosquitoes, and midges)	652	
Myiasis	658	
Order Hemiptera (true bugs)	665	
Order Coleoptera (beetles)	667	
Order Siphonaptera (fleas)	668	
Order Anoplura (sucking lice)	669	
Order Mallophaga (biting and chewing lice)	670	
Order Hymenoptera (bees, wasps, and ants)	670	
Order Dictyoptera (cockroaches)	673	
Class Arachnida (ticks, mites, spiders, scorpions)	673	
Subclass Acari (ticks, mites, and chiggers)	673	
Subclass Araneae (spiders)	679	
Subclass Scorpiones (scorpions)	683	
Other arthropods	683	
Class Chilopoda (centipedes)	683	
Class Diplopoda (millipedes)	684	
Class Crustacea (copepods, crabs, crayfish, etc.)	685	
Control of arthropods of medical importance	685	
Physical control	687	
Biological control	687	
Chemical control	687	
25 Treatment of Parasitic Infections	690	
PART II		
Diagnostic Procedures 721		
26 Collection, Preservation, and Shipment of Fecal Specimens	723	
Safety	723	
Fresh-specimen collection	724	
Collection of the specimen	724	
Number of specimens to be collected (standard recommendation)	724	
Number of specimens to be collected (pros and cons of various options)	725	
Collection times	726	
Specimen type, specimen stability, and need for preservation	726	
Preservation of specimens	729	
Preservatives	729	
Formalin	729	
MIF	730	
SAF	732	
Schaudinn's fluid	733	
PVA	733	
Modified PVA	734	
Single-vial collection systems (other than SAF)	734	
Use of fixatives	735	
Shipment of diagnostic specimens, biological products, etiologic agents, or infectious substances	736	
27 Macroscopic and Microscopic Examination of Fecal Specimens	741	
Macroscopic examination	741	
Microscopic examination (ova and parasite examination)	742	
Direct wet smear	742	
Saline (0.85% NaCl)	744	
D'Antoni's iodine	744	
Lugol's iodine	744	
Nair's buffered methylene blue stain for trophozoites (direct smear)	744	
Concentration (sedimentation and flotation)	746	
Formalin-ethyl acetate sedimentation concentration	746	
Iodine-trichrome stain for sediment	750	
Zinc sulfate flotation concentration	751	
Commercial fecal concentration devices	754	
Automated workstation for the microscopic analysis of fecal concentrates	754	
Permanent stained smear	754	
Preparation of material for staining	756	

- Trichrome stain 759
 - Iron hematoxylin stain 765
 - Modified iron hematoxylin stain (incorporating the carbol fuchsin step) 769
 - Polychrome IV stain 770
 - Chlorazol black E stain 770
 - Specialized stains for coccidia (*Cryptosporidium*, *Isospora*, and *Cyclospora* species) and the microsporidia 771
 - Modified Kinyoun's acid-fast stain (cold method) 771
 - Modified Ziehl-Neelsen acid-fast stain (hot method) 774
 - Modified trichrome stain for the microsporidia (Weber—green) 777
 - Modified trichrome stain for the microsporidia (Ryan—blue) 779
 - Modified trichrome stain for the microsporidia (Kokoskin—hot method) 781
 - Acid-fast trichrome stain for *Cryptosporidium* and the microsporidia 782
- 28 Additional Techniques for Stool Examination 786**
- Culture of larval-stage nematodes 786
 - Harada-Mori filter paper strip culture 787
 - Filter paper/slant culture technique (petri dish) 788
 - Charcoal culture 789
 - Baermann technique 791
 - Agar plate culture for *Strongyloides stercoralis* 792
 - Egg studies 795
 - Estimation of worm burdens 795
 - Hatching of schistosome eggs 796
 - Search for tapeworm scolex 798
- 29 Examination of Other Specimens from the Intestinal Tract and the Urogenital System 802**
- Examination for pinworm 802
 - Cellulose tape preparations 803
 - Anal swabs 803
 - Sigmoidoscopy material 804
 - Direct saline mount 805
 - Permanent stained slide 805
 - Duodenal contents 805
 - Duodenal drainage 805
 - Duodenal capsule technique (Entero-Test) 806
 - Urogenital specimens 806
 - Trichomoniasis 806
 - Filariasis 807
 - Schistosomiasis 807
- 30 Sputum, Aspirates, and Biopsy Material 809**
- Expectorated sputum 809
 - Induced sputum 811
 - Aspirates 817
 - Biopsy material 820
- 31 Procedures for Detecting Blood Parasites 829**
- Preparation of thick and thin blood films 829
 - Thick blood films 830
 - Thin blood films 830
 - Combination thick and thin blood films (on the same slide) 831
 - Combination thick and thin blood films (can be stained as either) 831
 - Staining blood films 831
 - Giemsa stain 832
 - Wright's stain 835
 - General notes on staining procedures 836
 - Proper examination of thin and thick blood films 836
 - Thin blood films 836
 - Thick blood films 837
 - Determination of parasitemia 837
 - Diagnosis of malaria: review of alternatives to conventional microscopy 838
 - QBC microhematocrit centrifugation method 838
 - ParaSight F test 842
 - ICT Malaria Pf test 842
 - ICT Malaria Pf/Pv test 843
 - OptiMAL test 843
 - PCR 843
 - Automated blood cell analyzers 844
 - Concentration procedures 844
 - Buffy coat films 844
 - Cytocentrifugation technique 845
 - Knott concentration procedure 845
 - Membrane filtration technique 845
 - Gradient centrifugation technique 846
 - Triple-centrifugation method for trypanosomes 846
 - Special stain for microfilarial sheath 846
 - Delafield's hematoxylin 846
- 32 Parasite Recovery: Culture Methods, Animal Inoculation, and Xenodiagnosis 850**
- Culture methods 850
 - Intestinal protozoa 851
 - Pathogenic free-living amebae 855
 - Pathogenic flagellates 860
 - Flagellates of blood and tissue 864
 - Toxoplasma gondii* 869
 - Malaria 869
 - Animal inoculation 869
 - Leishmaniae 869
 - Trypanosomes 870

- Toxoplasma gondii* 870
- Xenodiagnosis 870
- 33 Fixation and Special Preparation of Fecal Parasite Specimens and Arthropods 873**
 - Fixation of parasite specimens 873
 - Protozoa 874
 - Solutions to induce relaxation in adult helminths 875
 - Nematodes 875
 - Trematodes 876
 - Cestodes 876
 - Helminth eggs and larvae 876
 - Arthropods 876
 - Preparation of parasite specimens and arthropods for study 877
 - Nematodes 877
 - Trematodes 878
 - Cestodes 879
 - Mounting arthropods for examination 880
 - Mites 880
 - Fleas and lice 880
 - Ticks 880
 - Miscellaneous arthropods 880
- 34 Artifacts That Can Be Confused with Parasitic Organisms 882**
 - Protozoa 882
 - Amebae 882
 - Flagellates 884
 - Ciliates 884
 - Coccidia and microsporidia 884
 - Cryptosporidium* spp. 884
 - Isospora belli* 886
 - Microsporidia 886
 - Blood and body fluids 886
 - Malaria parasites and *Babesia* spp. 886
 - Leishmaniae and trypanosomes 886
 - Microfilariae 887
 - Body fluids: ciliated epithelial cells 887
 - Helminths 887
 - Adult worms and larvae 887
 - Eggs 887
 - Human cells 888
 - Polymorphonuclear leukocytes 888
 - Eosinophils 888
 - Macrophages 889
 - Lymphocytes 889
 - Red blood cells 889
 - Charcot-Leyden crystals 889
 - Nonhuman elements seen in feces (yeast cells) 891
 - Insect larvae 892
 - Spurious infections 892
 - Delusory parasitosis 892
 - 35 Equipment, Supplies, Safety, and Quality System Recommendations for a Diagnostic Parasitology Laboratory: Factors Influencing Future Laboratory Practice 894**
 - Equipment 894
 - Microscope 894
 - Centrifuge 897
 - Fume hood 898
 - Biological safety cabinet 898
 - Refrigerator-freezer 899
 - Supplies 899
 - Glassware 899
 - Miscellaneous supplies 899
 - ATCC quality control organisms 900
 - Safety: personnel and physical facilities 900
 - General precautions 900
 - Handling specimens 901
 - Processing specimens 901
 - Spills 902
 - Disposal of contaminated materials 903
 - Universal Precautions 903
 - Hepatitis exposure protocol 907
 - Dangerous properties of industrial materials 908
 - Current OSHA regulations on the use of formaldehyde 909
 - Latex allergy 910
 - Quality systems 910
 - Extent of services 910
 - Proficiency testing 911
 - In-house quality control 911
 - Patient outcome measures 916
 - Continuous quality improvement, total quality management, or ten-step and FOCUS-PDCA for performance improvement activities 917
 - CLIA '88 inspection process 918
 - New quality guidelines 918
 - ISO guidelines 920
 - NCCLS model 920
 - Factors influencing future laboratory practice 920
 - Managed care 920
 - Financial considerations 922
 - Decentralized testing 922
 - Laboratory services 923
 - Technological trends 923
 - Clinical decision support 924
 - Personnel issues 924
 - Changing demographics 925
 - Emerging diseases 925

Appendixes 929**APPENDIX 1****Information Tables 930**

- A1.1** Classification of human parasites 930
- A1.2** Distribution of selected parasitic infections in the Americas 933
- A1.3** Distribution of selected parasitic infections in Europe 933
- A1.4** Distribution of selected parasitic infections in Africa 934
- A1.5** Distribution of selected parasitic infections in Asia 935
- A1.6** Distribution of selected parasitic infections in Oceania 935
- A1.7** Cosmopolitan distribution of common parasitic infections (North America, Mexico, Central America, South America, Europe, Africa, Asia, and Oceania) 936
- A1.8** Body sites and specimen collection 937
- A1.9** Body sites and possible parasites recovered (trophozoites, cysts, oocysts, spores, adults, larvae, eggs, amastigotes, and trypomastigotes) 938
- A1.10** Body site, specimen, and recommended stain(s) 939
- A1.11** Examination of tissue and body fluids 942
- A1.12** Key characteristics of protozoa of the intestinal tract and urogenital system 944
- A1.13** Characteristics of tissue protozoa 947
- A1.14** Key characteristics of helminths 949
- A1.15** Key characteristics of parasites found in blood 952
- A1.16** Diagnostic laboratory report information that should be relayed to the physician 954
- A1.17** Approaches to stool parasitology: test ordering 955
- A1.18** Pros and cons of ova and parasite examination options 956
- A1.19** Laboratory test reports: optional comments 958

APPENDIX 2**Flowcharts and Staining Tables for Diagnostic Procedures 959****Flowcharts**

- A2.1** Procedure for processing fresh stool for the ova and parasite examination 959
- A2.2** Procedure for processing liquid specimens for the ova and parasite examination 960
- A2.3** Procedure for processing preserved stool for the ova and parasite examination 961

- A2.4** Procedure for processing sodium acetate-acetic acid-formalin (SAF)-preserved stool for the ova and parasite examination 962

- A2.5** Use of various fixatives and their recommended stains 963

Tables

- A2.1** Steps in the trichrome staining procedure (mercuric chloride-based PVA-preserved stool specimens) 964
- A2.2** Steps in the trichrome staining procedure (non-mercuric chloride-based PVA-preserved stool specimens) 965
- A2.3** Steps in the iron hematoxylin staining procedure (mercuric chloride-based PVA-preserved stool specimens) (Spencer-Monroe) 966
- A2.4** Steps in the iron hematoxylin staining procedure (mercuric chloride-based PVA-preserved stool specimens) (Tompkins-Miller method) 967
- A2.5** Steps in the iron hematoxylin staining procedure (incorporating the carbol fuchsin step) 968
- A2.6** Oil-mounted permanent stained smears (no Permout is used) 969

APPENDIX 3**Common Problems in Parasite Identification 970****Figures**

- A3.1–A3.15** Paired drawings of “look alikes” 970
- A3.16** Relative sizes of helminth eggs 978

Table

- A3.1** Adult nematodes and/or larvae found in stool specimens: size comparisons 980

APPENDIX 4**Quality Control Recording Sheets 981**

- A4.1** Diagnostic parasitology quality control (QC) (reagents) 982
- A4.2** Diagnostic parasitology quality control (QC) (reagents)—example for multiple reagents 983
- A4.3** Diagnostic parasitology quality control (QC) (culture)—example of a worksheet 984
- A4.4** Equipment maintenance 985

APPENDIX 5**Commercial Supplies and Suppliers 987****Tables**

- A5.1** Sources of commercial reagents and supplies 988
- A5.2** Addresses of suppliers listed in Table A5.1 990

xiv *Contents*

- A5.3** Sources of available reagents for immunodetection of parasitic organisms or antigens 992
- A5.4** Addresses of suppliers listed in Table A5.3 993
- A5.5** Commercial suppliers of diagnostic parasitology products 994
- A5.6** Sources of parasitologic specimens 998
- A5.7** Sources of Kodachrome slides (35 mm, 2 × 2) 999

APPENDIX 6
Reference Sources 1000

APPENDIX 7
Color Plates of Diagnostic Stages of Human Parasites 1003

APPENDIX 8
"Late-Breaking" Published Information 1019

Glossary 1057

Index 1069