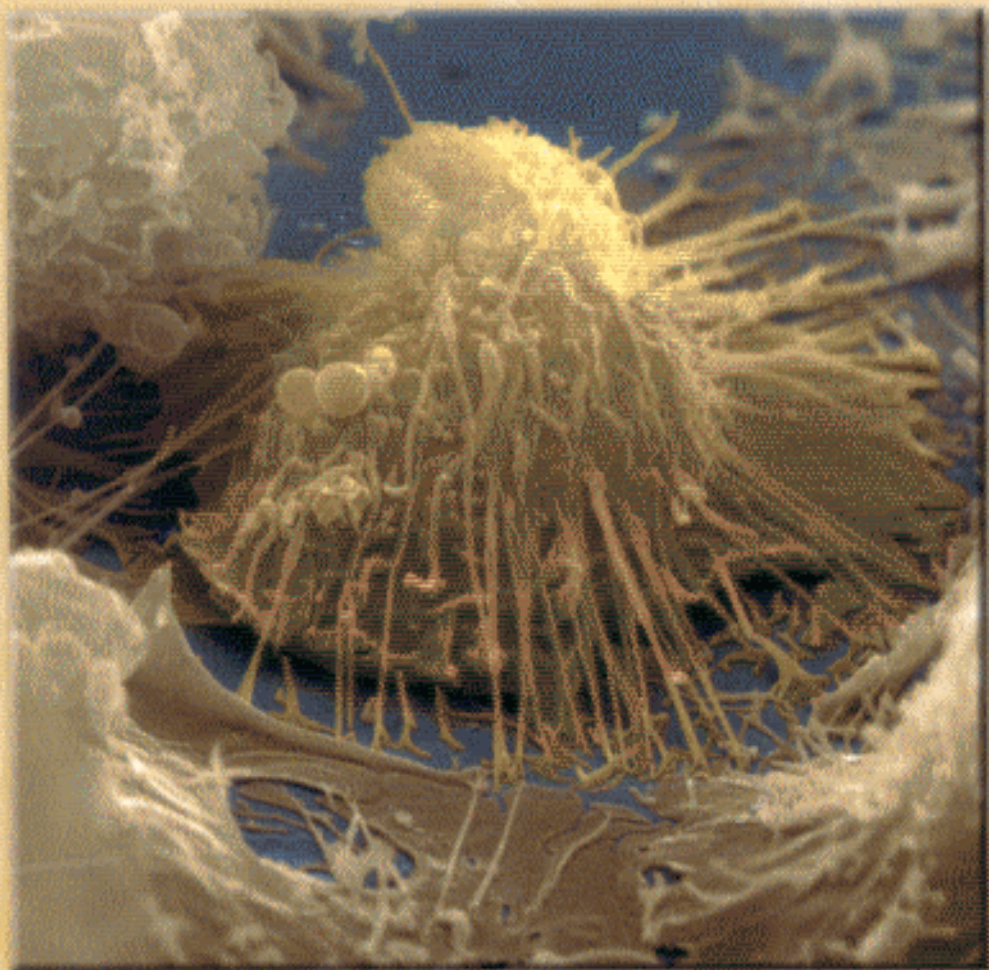


Immunology

FIFTH EDITION



Richard A. Goldsby • Thomas J. Kindt
Barbara A. Osborne • Janis Kuby

www.whfreeman.com/immunology5e

CONTENTS

Preface xxiii

PART I Introduction

1 Overview of the Immune System 1

Historical Perspective 1

Early Studies Revealed Humoral and Cellular
Components of the Immune System 2

Early Theories Attempted to Explain the Specificity
of the Antibody-Antigen Interaction 4

The Immune System Includes Innate and
Adaptive Components 4

Innate Immunity 5

The Skin and the Mucosal Surfaces Provide
Protective Barriers Against Infection 5

Physiologic Barriers to Infection Include
General Conditions and Specific Molecules 6

Cells That Ingest and Destroy Pathogens
Make Up a Phagocytic Barrier to Infection 7

Inflammation Represents a Complex Sequence of
Events That Stimulates Immune Responses 7

Adaptive Immunity 9

The Adaptive Immune System Requires
Cooperation Between Lymphocytes and
Antigen-Presenting Cells 9

B LYMPHOCYTES 9

T LYMPHOCYTES 10

ANTIGEN-PRESENTING CELLS 10

Humoral Immunity but Not Cellular
Immunity Is Transferred with Antibody 11

Antigen Is Recognized Differently by B
and T Lymphocytes 11

B and T Lymphocytes Utilize Similar Mechanisms
to Generate Diversity in Antigen Receptors 11

The Major Histocompatibility Molecules Bind
Antigenic Peptides 13

Complex Antigens Are Degraded (Processed)
and Displayed (Presented) with MHC
Molecules on the Cell Surface 14

Antigen Selection of Lymphocytes Causes
Clonal Expansion 14

The Innate and Adaptive Immune Systems
Collaborate, Increasing the Efficiency of
Immune Responsiveness 16

Comparative Immunity 17

Immune Dysfunction and Its Consequences 18



CLINICAL FOCUS Allergy and Asthma as
Serious Public Health Problems 19

2 Cells and Organs of the Immune System 24

Hematopoiesis 24

Hematopoiesis Can Be Studied In Vitro 26

Hematopoiesis Is Regulated at the Genetic Level 27

Hematopoietic Homeostasis Involves
Many Factors 27

Programmed Cell Death Is an Essential
Homeostatic Mechanism 27

Hematopoietic Stem Cells Can Be Enriched 30

Cells of the Immune System 32

Lymphoid Cells 32



CLINICAL FOCUS Stem Cells—Clinical Uses
and Potential 34

B LYMPHOCYTES 36

T LYMPHOCYTES 37

NATURAL KILLER CELLS 38

Mononuclear Phagocytes 38

PHAGOCYTOSIS 39

ANTIMICROBIAL AND CYTOTOXIC ACTIVITIES 39

ANTIGEN PROCESSING AND PRESENTATION 41

SECRETION OF FACTORS 41

Granulocytic Cells 41

NEUTROPHILS 41

EOSINOPHILS 42

BASOPHILS 42

MAST CELLS 42

DENDRITIC CELLS	42
Organs of the Immune System	43
Primary Lymphoid Organs	43
THYMUS	44
BONE MARROW	45
Lymphatic System	46
Secondary Lymphoid Organs	46
LYMPH NODES	47
SPLEEN	49
MUCOSAL-ASSOCIATED LYMPHOID TISSUE	50
Cutaneous-Associated Lymphoid Tissue	52
Systemic Function of the Immune System	52
Lymphoid Cells and Organs—Evolutionary Comparisons	53

PART II Generation of B-Cell and T-Cell Responses

3 Antigens 57

Immunogenicity Versus Antigenicity 57

Factors That Influence Immunogenicity 57

The Nature of the Immunogen Contributes to Immunogenicity	58
FOREIGNNESS	58
MOLECULAR SIZE	58
CHEMICAL COMPOSITION AND HETEROGENEITY	58
LIPIDS AS ANTIGENS	58
SUSCEPTIBILITY TO ANTIGEN PROCESSING AND PRESENTATION	60
The Biological System Contributes to Immunogenicity	60
GENOTYPE OF THE RECIPIENT ANIMAL	60
IMMUNOGEN DOSAGE AND ROUTE OF ADMINISTRATION	61
ADJUVANTS	61

Epitopes 62

Properties of B-Cell Epitopes Are Determined by the Nature of the Antigen-Binding Site	62
Antigen-Derived Peptides Are the Key Elements of T-Cell Epitopes	67

Haptens and the Study of Antigenicity 68

Pattern-Recognition Receptors 69



CLINICAL FOCUS Drug Allergies—When Medicines Become Immunogens 72

4 Antibodies: Structure and Function 76

Basic Structure of Antibodies 76

Antibodies Are Heterodimers	76
Chemical and Enzymatic Methods Revealed Basic Antibody Structure	77

Obstacles to Antibody Sequencing 78

Pure Immunoglobulin Obtained from Multiple Myeloma Patients Made Sequencing Possible	79
Light-Chain Sequencing Revealed That Immunoglobulins Have Constant and Variable Regions	79
Heavy-Chain Sequencing Revealed Five Basic Varieties of Heavy Chains	79

Immunoglobulin Fine Structure 79

Immunoglobulins Possess Multiple Domains Based on the Immunoglobulin Fold	80
Diversity in the Variable-Region Domain Is Concentrated in CDRs	82
CDRs Bind Antigen	83
Conformational Changes May Be Induced by Antigen Binding	85
Constant-Region Domains	86
C _H 1 AND C _γ DOMAINS	86
HINGE REGION	86
OTHER CONSTANT-REGION DOMAINS	87

Antibody-Mediated Effector Functions 87

Opsonization Is Promoted by Antibody	87
Antibodies Activate Complement	88
Antibody-Dependent Cell-Mediated Cytotoxicity (ADCC) Kills Cells	88
Some Antibodies Can Cross Epithelial Layers by Transcytosis	88

Antibody Classes and Biological Activities 88

Immunoglobulin G (IgG)	88
------------------------	----



CLINICAL FOCUS Passive Antibody Therapy 89

Immunoglobulin M (IgM)	89
Immunoglobulin A (IgA)	90
Immunoglobulin E (IgE)	92
Immunoglobulin D (IgD)	94

Antigenic Determinants on Immunoglobulins 94

Isotype	94
Allotype	95
Idiotypic	95

The B-Cell Receptor 96

Fc Receptors Bond to Fc Regions of Antibodies	96
---	----

The Immunoglobulin Superfamily 97

Monoclonal Antibodies 99

Monoclonal Antibodies Have Important Clinical Uses	100
--	-----

Abzymes Are Monoclonal Antibodies
That Catalyze Reactions 100

5 Organization and Expression of Immunoglobulin Genes 105

Genetic Model Compatible with Ig Structure 106

Germ-Line and Somatic-Variation Models
Contended to Explain Antibody Diversity 107
Dreyer and Bennett Proposed the Two-Gene
Model 107
Tonegawa's Bombshell—Immunoglobulin
Genes Rearrange 108

Multigene Organization of Ig Genes 109

Each Multigene Family Has Distinct Features 109

λ -CHAIN MULTIGENE FAMILY 109
 κ -CHAIN MULTIGENE FAMILY 109
HEAVY-CHAIN MULTIGENE FAMILY 109

Variable-Region Gene Rearrangements 110

Light-Chain DNA Undergoes V-J
Rearrangements 111
Heavy-Chain DNA Undergoes V-D-J
Rearrangements 112

Mechanism of Variable-Region DNA Rearrangements 113

Recombination Signal Sequences Direct
Recombination 113
Gene Segments Are Joined by Recombinases 113
Ig-Gene Rearrangements May Be Productive
or Nonproductive 115
Allelic Exclusion Ensures a Single Antigenic
Specificity 115

Generation of Antibody Diversity 117

There Are Numerous Germ-Line V, D,
and J Gene Segments 117
Combinatorial V-J and V-D-J Joining
Generates Diversity 117
Junctional Flexibility Adds Diversity 117
P-Addition Adds Diversity at Palindromic
Sequences 119
N-Addition Adds Considerable Diversity
by Addition of Nucleotides 119
Somatic Hypermutation Adds Diversity
in Already-Rearranged Gene Segments 119
A Final Source of Diversity Is Combinatorial
Association of Heavy and Light Chains 120

Class Switching Among Constant-Region Genes 121

Expression of Ig Genes 122

Heavy-Chain Primary Transcripts Undergo
Differential RNA Processing 123

EXPRESSION OF MEMBRANE OR SECRETED
IMMUNOGLOBULIN 123

SIMULTANEOUS EXPRESSION OF IgM AND IgD 123

Synthesis, Assembly, and Secretion of Immunoglobulins 125

Regulation of Ig-Gene Transcription 126

DNA Rearrangement Greatly Accelerates
Transcription 127
Ig-Gene Expression Is Inhibited in T Cells 127

Antibody Genes and Antibody Engineering 128

Chimeric and Hybrid Monoclonal Antibodies
Have Potent Clinical Potential 128
Monoclonal Antibodies Can Be Constructed
from Ig-Gene Libraries 129



CLINICAL FOCUS Therapy for Non-Hodgkin's
Lymphoma and Other Diseases by Genetically
Engineered Antibodies 130

Mice Have Been Engineered with Human
Immunoglobulin Loci 132

6 Antigen-Antibody Interactions: Principles and Applications 137

Strength of Antigen-Antibody Interactions 137

Antibody Affinity Is a Quantitative Measure
of Binding Strength 137
Antibody Avidity Incorporates Affinity of Multiple
Binding Sites 140

Cross-Reactivity 141

Precipitation Reactions 141

Precipitation Reactions in Fluids Yield a
Precipitin Curve 142
Precipitation Reactions in Gels Yield Visible
Precipitin Lines 142
Immunoelectrophoresis Combines Electrophoresis
and Double Immunodiffusion 143

Agglutination Reactions 144

Hemagglutination Is Used in Blood Typing 145
Bacterial Agglutination Is Used to Diagnose
Infection 145
Passive Agglutination Is Useful with Soluble
Antigens 145
In Agglutination Inhibition, Absence of
Agglutination Is Diagnostic of Antigen 146


Radioimmunoassay 147

Enzyme-Linked Immunosorbent Assay 148

There Are Numerous Variants of ELISA 148
INDIRECT ELISA 148
SANDWICH ELISA 149
COMPETITIVE ELISA 149

CHEMILUMINESCENCE 150

ELISPOT ASSAY 150

Western Blotting 150**Immunoprecipitation** 152**Immunofluorescence** 152**Flow Cytometry and Fluorescence** 154 **CLINICAL FOCUS** Flow Cytometry and Leukemia Typing 156**Alternatives to Antigen-Antibody Reactions** 156**Immunoelectron Microscopy** 156

7 Major Histocompatibility Complex 161

General Organization and Inheritance of the MHC 161

The MHC Encodes Three Major Classes of Molecules 161

Allelic Forms of MHC Genes Are Inherited in Linked Groups Called Haplotypes 163

MHC Congenic Mouse Strains Are Identical at All Loci Except the MHC 163

MHC Molecules and Genes 166

Class I Molecules Have a Glycoprotein Heavy Chain and a Small Protein Light Chain 166

Class II Molecules Have Two Nonidentical Glycoprotein Chains 168

The Exon/Intron Arrangement of Class I and II Genes Reflects Their Domain Structure 168

Class I and II Molecules Exhibit Polymorphism in the Region That Binds to Peptides 169

CLASS I MHC-PEPTIDE INTERACTION 170

CLASS II MHC-PEPTIDE INTERACTION 171

Class I and Class II Molecules Exhibit Diversity Within a Species and Multiple Forms Occur in an Individual 172

LINKAGE DISEQUILIBRIUM 173

FUNCTIONAL RELEVANCE OF MHC POLYMORPHISM 174

Detailed Genomic Map of MHC Genes 174

The Human Class I Region Spans about 2000 kb at the Telomeric End of the HLA Complex 175

The Class II MHC Genes Are Located at the Centromeric End of HLA 176

Human MHC Class III Genes Are Between Class I and II 176

Cellular Distribution of MHC Molecules 176**Regulation of MHC Expression** 177**MHC and Immune Responsiveness** 178**MHC and Disease Susceptibility** 179**CLINICAL FOCUS** HFE and Hereditary Hemochromatosis 180

8 Antigen Processing and Presentation 185

Self-MHC Restriction of T Cells 185**Role of Antigen-Presenting Cells** 186

Processing of Antigen Is Required for Recognition by T Cells 187

Most Cells Can Present Antigen with Class I MHC; Presentation with Class II MHC Is Restricted to APCs 188

Evidence for Two Processing and Presentation Pathways 188**Endogenous Antigens: The Cytosolic Pathway** 190

Peptides for Presentation Are Generated by Protease Complexes Called Proteasomes 190

Peptides Are Transported from the Cytosol to the Rough Endoplasmic Reticulum 190

Peptides Assemble with Class I MHC Aided by Chaperone Molecules 191

**CLINICAL FOCUS** Deficiency in Transporters Associated with Antigen Presentation (TAP) Leads to a Diverse Disease Spectrum 192**Exogenous Antigens: The Endocytic Pathway** 193

Peptides Are Generated from Internalized Molecules in Endocytic Vesicles 193

The Invariant Chain Guides Transport of Class II MHC Molecules to Endocytic Vesicles 193

Peptides Assemble with Class II MHC Molecules by Displacing CLIP 195

Presentation of Nonpeptide Antigens 196

9 T-Cell Receptor 200

Early Studies of the T-Cell Receptor 200

Classic Experiments Demonstrated the Self-MHC Restriction of the T-Cell Receptor 201

T-Cell Receptors Were Isolated by Using Clonotypic Antibodies 201

The TCR β -Chain Gene Was Cloned by Use of Subtractive Hybridization 201 **$\alpha\beta$ and $\gamma\delta$ T-Cell Receptors: Structure and Roles** 202**Organization and Rearrangement of TCR Genes** 204

- TCR Variable-Region Genes Rearrange in a Manner Similar to Antibody Genes 205
- MECHANISM OF TCR DNA REARRANGEMENTS 205
- ALLELIC EXCLUSION OF TCR GENES 207
- Rearranged TCR Genes Are Assembled from V, J, and D Gene Segments 207
- TCR Diversity Is Generated Like Antibody Diversity but Without Somatic Mutation 207



CLINICAL FOCUS T-Cell Rearrangements as Markers for Cancerous Cells 208

T-Cell Receptor Complex: TCR-CD3 212

T-Cell Accessory Membrane Molecules 213

- CD4 and CD8 Coreceptors Bind to Conserved Regions of MHC Class II or I Molecules 213
- Affinity of TCR for Peptide-MHC Complexes Is Weak Compared with Antibody Binding 215

Three-Dimensional Structures of TCR-Peptide-MHC Complexes 217

- TCRs Interact Differently with Class I and Class II Molecules 217

Alloreactivity of T Cells 218

10 T-Cell Maturation, Activation, and Differentiation 221

T-Cell Maturation and the Thymus 221

Thymic Selection of the T-Cell Repertoire 223

- Positive Selection Ensures MHC Restriction 224
- Negative Selection Ensures Self-Tolerance 225
- Experiments Revealed the Essential Elements of Positive and Negative Selection 225
- Some Central Issues in Thymic Selection Remain Unresolved 226

T_H-Cell Activation 229

- Signal-Transduction Pathways Have Several Features in Common 229
- Multiple Signaling Pathways Are Initiated by TCR Engagement 231
- Co-Stimulatory Signals Are Required for Full T-Cell Activation 233
- Clonal Anergy Ensues If a Co-Stimulatory Signal Is Absent 235
- Superantigens Induce T-Cell Activation by Binding the TCR and MHC II Simultaneously 235

T-Cell Differentiation 236

- Activated T Cells Generate Effector and Memory T Cells 236
- A CD4⁺CD25⁺ Subpopulation of T Cells Negatively Regulates Immune Responses 238

- Antigen-Presenting Cells Have Characteristic Co-Stimulatory Properties 238

Cell Death and T-Cell Populations 239

Peripheral $\gamma\delta$ T Cells 241

- $\gamma\delta$ T Cells Are Far Less Pervasive Than $\alpha\beta$ T Cells 241
- $\gamma\delta$ T Cells Recognize Nonpeptide Ligands 241



CLINICAL FOCUS Failure of Apoptosis Causes Defective Lymphocyte Homeostasis 242

11 B-Cell Generation, Activation, and Differentiation 247

B-Cell Maturation 247

- Progenitor B Cells Proliferate in Bone Marrow 248
- Ig-Gene Rearrangement Produces Immature B Cells 249
- The Pre-B-Cell Receptor Is Essential for B-Cell Development 250
- Knockout Experiments Identified Essential Transcription Factors 251
- Cell-Surface Markers Identify Development Stages 251
- B-1 B Cells Are a Self-Renewing B-Cell Subset 252
- Self-Reactive B Cells Are Selected Against in Bone Marrow 252
- Self-Reactive B Cells May Be Rescued by Editing of Light-Chain Genes 253

B-Cell Activation and Proliferation 254

- Thymus-Dependent and Thymus-Independent Antigens Have Different Requirements for Response 254
- Two Types of Signals Drive B Cells into and Through the Cell Cycle 254
- Transduction of Activating Signals Involves Ig- α /Ig- β Heterodimers 255
- The B-Cell-Coreceptor Complex Can Enhance B-Cell Responses 256



CLINICAL FOCUS X-Linked Agammaglobulinemia: A Failure in Signal Transduction and B-Cell Development 258

T_H Cells Play Essential Roles in Most B-Cell Responses 259

- FORMATION OF T-B CONJUGATE 259
- CONTACT-DEPENDENT HELP MEDIATED BY CD40/CD40L INTERACTION 260
- SIGNALS PROVIDED BY T_H-CELL CYTOKINES 261
- Mature Self-Reactive B Cells Can Be Negatively Selected in the Periphery 261

The Humoral Response 264

Primary and Secondary Responses

Differ Significantly 264

T Helper Cells Play a Critical Role in the Humoral Response to Hapten-Carrier Conjugates 265

In Vivo Sites for Induction of Humoral Responses 266**Germinal Centers and Antigen-Induced B-Cell Differentiation 267**

Affinity Maturation Is the Result of Repeated Mutation and Selection 267
 THE ROLE OF SOMATIC HYPERMUTATION 269
 THE ROLE OF SELECTION 270
 CLASS SWITCHING 270

Memory B Cells and Plasma Cells Are Generated in Germinal Centers 270

Regulation of B-Cell Development 271**Regulation of the Immune Effector Response 272**

Different Antigens Can Compete with Each Other 272
 The Presence of Antibody Can Suppress the Response to Antigen 272

PART III Immune Effector Mechanisms**12 Cytokines 276****Properties of Cytokines 276**

Cytokines Belong to Four Structural Families 279
 Cytokines Have Numerous Biological Functions 280

Cytokine Receptors 282

Cytokine Receptors Fall Within Five Families 282
 Subfamilies of Class I Cytokine Receptors Have Signaling Subunits in Common 283
 IL-2R Is the Most Thoroughly Studied Cytokine Receptor 284
 Engaged Cytokine Receptors Activate Signaling Pathways 285

Cytokine Antagonists 287**Cytokine Secretion by T_H1 and T_H2 Subsets 288**

The Development of T_H1 and T_H2 Subsets Is Determined by the Cytokine Environment 289
 Cytokine Profiles Are Cross-Regulated 290
 The T_H1/T_H2 Balance Determines Disease Outcomes 291

Cytokine-Related Diseases 291

Bacterial Septic Shock Is Common and Potentially Lethal 291

Bacterial Toxic Shock Is Caused by Superantigens 292

Cytokine Activity Is Implicated in Lymphoid and Myeloid Cancers 292

Chagas' Disease Is Caused by a Parasite 292


Therapeutic Uses of Cytokines and Their Receptors 292**Cytokines in Hematopoiesis 293**

CLINICAL FOCUS Therapy with Interferons 294

13 The Complement System 299**The Function of Complement 299****The Complement Components 300****Complement Activation 300**

The Classical Pathway Begins with Antigen-Antibody Binding 300
 The Alternative Pathway Is Antibody-Independent 304
 The Lectin Pathway Originates with Host Proteins Binding Microbial Surfaces 305
 The Three Complement Pathways Converge at the Membrane-Attack Complex 305

Regulation of the Complement System 307**Biological Consequences of Complement Activation 310**

The Membrane-Attack Complex Can Lyse a Broad Spectrum of Cells 310
 CLINICAL FOCUS Paroxysmal Nocturnal Hemoglobinuria: A Defect in Regulation of Complement Lysis 311
 Cleavage Products of Complement Components Mediate Inflammation 314
 C3b and C4b Binding Facilitates Opsonization 314
 The Complement System Also Neutralizes Viral Infectivity 315
 The Complement System Clears Immune Complexes from Circulation 315

Complement Deficiencies 316**14 Cell-Mediated Effector Responses 319****Effector Responses 319****General Principles of Effector T Cells 320**

The Activation Requirements of T Cells Differ	320	Chemokine Receptor Profiles Mediate Leukocyte Activity	347
Cell-Adhesion Molecules Facilitate TCR-Mediated Interactions	320	Other Mediators of Inflammation	348
Effector T Cells Express a Variety of Effector Molecules	321	The Kinin System Is Activated by Tissue Injury	348
Cytotoxic T Cells	321	The Cloning System Yields Fibrin-Generated Mediators of Inflammation	348
Effector CTLs Are Generated from CTL Precursors	321	The Fibrinolytic System Yields Plasmin-Generated Mediators of Inflammation	348
CD8 ⁺ CTLs Can Be Tracked with MHC Tetramer Technology	323	The Complement System Produces Anaphylotoxins	348
CTLs Kill Cells in Two Ways	324	Some Lipids Act as Inflammatory Mediators	349
Natural Killer Cells	328	Some Cytokines Are Important Inflammatory Mediators	349
 CLINICAL FOCUS Chediak-Higashi Syndrome	332	The Inflammatory Process	350
NK Cells and T Cells Share Some Features	330	Neutrophils Play an Early and Important Role in Inflammation	350
Killing by NK Cells Is Similar to CTL-Mediated Killing	330	Inflammatory Responses May be Localized or Systemic	350
NK Cells Have Both Activation and Inhibition Receptors	331	LOCALIZED INFLAMMATORY RESPONSE	350
Antibody-Dependent Cell-Mediated Cytotoxicity	333	SYSTEMIC ACUTE-PHASE RESPONSE	352
Experimental Assessment of Cell-Mediated Cytotoxicity	334	Chronic Inflammation Develops When Antigen Persists	352
Co-Culturing T Cells with Foreign Cells Stimulates MLR	334	Roles of IFN- γ and TNF- α in Chronic Inflammation	353
CTL Activity Can Be Demonstrated by CML	334	CHRONIC INFLAMMATORY DISEASES	354
The GVH Reaction Is an Indication of Cell-Mediated Cytotoxicity	335	 CLINICAL FOCUS Leukocyte-Adhesion Deficiency (LAD) in Humans and Cattle	356
15 Leukocyte Migration and Inflammation	338	Anti-Inflammatory Agents	357
Lymphocyte Recirculation	338	Antibody Therapies Reduce Leukocyte Extravasation	357
Cell-Adhesion Molecules	338	Corticosteroids Are Powerful Anti-Inflammatory Drugs	357
Neutrophil Extravasation	340	NSAIDs Combat Pain and Inflammation	358
Lymphocyte Extravasation	341	16 Hypersensitive Reactions	361
High-Endothelial Venules Are Sites of Lymphocyte Extravasation	341	Cell and Coombs Classification	361
Lymphocyte Homing is Directed by Receptor Profiles and Signals	342	IgE-Mediated (Type I) Hypersensitivity	362
Naive Lymphocytes Recirculate to Secondary Lymphoid Tissue	343	There Are Several Components of Type I Reactions	363
Effector and Memory Lymphocytes Adopt Different Trafficking Patterns	344	ALLERGENS	363
Adhesion-Molecule Interactions Play Critical Roles in Extravasation	345	REAGINIC ANTIBODY (IgE)	364
Chemokines—Key Mediators of Inflammation	346	MAST CELLS AND BASOPHILS	364
		IgE-BINDING FC RECEPTORS	365
		IgE Crosslinkage Initiates Degranulation	367
		RECEPTOR CROSSLINKAGE	367
		Intracellular Events Also Regulate Mast-Cell Degranulation	367
		Several Pharmacologic Agents Mediate Type I Reactions	368
		HISTAMINE	369

LEUKOTRIENES AND PROSTAGLANDINS 369
CYTOKINES 370

Type I Reactions Can Be Systemic or
Localized 370

SYSTEMIC ANAPHYLAXIS 370


LOCALIZED ANAPHYLAXIS (ATOPY) 371

Late-Phase Reactions Induce Localized
Inflammatory Reactions 371

Type I Responses Are Regulated by Many
Factors 373

Several Methods Are Used to Detect
Type I Hypersensitivity Reactions 374

Type I Hypersensitivities Can Be
Controlled Medically 375

 CLINICAL FOCUS The Genetics of
Asthma 376

Antibody-Mediated (Type II)

Hypersensitivity 378

Transfusion Reactions Are Type II Reactions 378

Hemolytic Disease of the Newborn Is
Caused by Type II Reactions 379

Drug-Induced Hemolytic Anemia Is a
Type II Response 380

Immune Complex-Mediated (Type III)

Hypersensitivity 381

Type III Reactions Can Be Localized 381

Type III Reactions Can Also Be Generalized 382

Type IV or Delayed-Type Hypersensitivity (DTH) 382

There Are Several Phases of the DTH Response 383
Numerous Cytokines Participate in the
DTH Reaction 384

The DTH Reaction Is Detected with a Skin Test 385

Contact Dermatitis Is a Type of DTH Response 385

PART IV The Immune System in Health and Disease

17 Immune Response to Infectious Diseases 389

Viral Infections 390

Many Viruses Are Neutralized by
Antibodies 391

Cell-Mediated Immunity Is Important for
Viral Control and Clearance 391

Viruses Can Evade Host Defense
Mechanisms 392

Influenza Has Been Responsible for Some
of the Worst Pandemics in History 392

PROPERTIES OF THE INFLUENZA VIRUS 392

HOST RESPONSE TO INFLUENZA INFECTION 395

Bacterial Infections 395

Immune Responses to Extracellular and
Intracellular Bacteria Can Differ 396

Bacteria Can Effectively Evade Host
Defense Mechanisms 396

Immune Responses Can Contribute to
Bacterial Pathogenesis 398

Diphtheria (*Corynebacterium diphtheriae*)
May Be Controlled by Immunization with
Inactivated Toxoid 399

Tuberculosis (*Mycobacterium tuberculosis*)
Is Primarily Controlled by CD4⁺ T Cells 399

Protozoan Diseases 401

Malaria (*Plasmodium* Species) Infects
600 Million People Worldwide 401

PLASMODIUM LIFE CYCLE AND PATHOGENESIS
OF MALARIA 401

HOST RESPONSE TO PLASMODIUM INFECTION 402

DESIGN OF MALARIA VACCINES 402

African Sleeping Sickness (*Trypanosoma*
Species) 402


Leishmaniasis Is a Useful Model for
Demonstrating Difference in Host
Responses 404

Diseases Caused by Parasitic Worms (Helminths) 404

Emerging Infectious Diseases 406

 CLINICAL FOCUS The Threat of Infection from
Potential Agents of Bioterrorism 408

18 Vaccines 413

 CLINICAL FOCUS Vaccination: Challenges
in the United States and Developing
Countries 414

Active and Passive Immunization 414

Passive Immunization Involves Transfer
of Preformed Antibodies 414

Active Immunization Elicits Long-Term
Protection 416

Designing Vaccines for Active Immunization 419

Whole-Organism Vaccines 420

Attenuated Viruses and Bacteria Cause
Immunity Without Disease 420

Pathogenic Organisms Are Inactivated
by Heat or Chemical Treatment 421

Purified Macromolecules as Vaccines 423

- Bacterial Polysaccharide Capsules Are Used as Vaccines 423
- Toxoids Are Manufactured from Bacterial Toxins 423
- Proteins from Pathogens Are Produced by Recombinant Techniques 423
- Use of Synthetic Peptides as Vaccines Has Progressed Slowly 423

Recombinant-Vector Vaccines 424

DNA Vaccines 425

Multivalent Subunit Vaccines 425

19 AIDS and Other Immunodeficiencies 429

Primary Immunodeficiencies 429

- Lymphoid Immunodeficiencies May Involve B Cells, T Cells or Both 431
- SEVERE COMBINED IMMUNODEFICIENCY (SCID) 432
- WISKOTT-ALDRICH SYNDROME (WAS) 434
- INTERFERON-GAMMA-RECEPTOR DEFECT 434
- X-LINKED AGAMMAGLOBULINEMIA 434
- X-LINKED HYPER-IgM SYNDROME 434
- COMMON VARIABLE IMMUNODEFICIENCY (CVI) 434
- HYPER-IgE SYNDROME (JOB SYNDROME) 435
- SELECTIVE DEFICIENCIES OF IMMUNOGLOBULIN CLASSES 435
- ATAXIA TELANGIECTASIA 435
- IMMUNE DISORDERS INVOLVING THE THYMUS 435
- Immunodeficiencies of the Myeloid Lineage Affect Innate Immunity 436
- REDUCTION IN NEUTROPHIL COUNT 436
- CHRONIC GRANULOMATOUS DISEASE (CGD) 436
- CHEDIAK-HIGASHI SYNDROME 437
- LEUKOCYTE ADHESION DEFICIENCY (LAD) 437
- Complement Defects Result in Immunodeficiency or Immune-Complex Disease 437
- Immunodeficiency Disorders Are Treated by Replacement of the Defective Element 438
- Experimental Models of Immunodeficiency Include Genetically Altered Animals 438
- NUDE (ATHYMIC) MICE 438
- THE SCID MOUSE 439

AIDS and Other Acquired or Secondary Immunodeficiencies 439

- HIV/AIDS Has Claimed Millions of Lives Worldwide 440
- HIV-1 Spreads by Sexual Contact, Infected Blood, and from Mother to Infant 441

- A Retrovirus, HIV-1, Is the Causative Agent of AIDS 442



CLINICAL FOCUS Prevention of Infant HIV Infection by Anti-Retroviral Treatment 444

- In Vitro Studies Revealed the HIV-1 Replication Cycle 445
- HIV-1 Infection Leads to Opportunistic Infections 448
- Therapeutic Agents Inhibit Retrovirus Replication 451
- A Vaccine May Be the Only Way to Stop the HIV/AIDS Epidemic 453

20 Autoimmunity 460

Organ-Specific Autoimmune Diseases 460

- Some Autoimmune Diseases Are Mediated by Direct Cellular Damage 461
- HASHIMOTO'S THYROIDITIS 461
- AUTOIMMUNE ANEMIAS 461
- GOODPASTURE'S SYNDROME 462
- INSULIN-DEPENDENT DIABETES MELLITUS 462
- Some Autoimmune Diseases Are Mediated by Stimulating or Blocking Auto-Antibodies 463
- GRAVES' DISEASE 463
- MYASTHENIA GRAVIS 463

Systemic Autoimmune Diseases 464

- Systemic Lupus Erythematosus Attacks Many Tissues 464
- Multiple Sclerosis Attacks the Central Nervous System 465
- Rheumatoid Arthritis Attacks Joints 465

Animal Models for Autoimmune Disease 465

- Autoimmunity Can Develop Spontaneously in Animals 466
- Autoimmunity Can Be Induced Experimentally in Animals 467

Evidence Implicating the CD4⁺ T Cell, MHC, and TCR in Autoimmunity 467

- CD4⁺ T Cells and T_H1/T_H2 Balance Play an Important Role in Autoimmunity in Some Animal Models 468
- Autoimmunity Can Be Associated with the MHC or with Particular T-Cell Receptors 468

Proposed Mechanism for Induction of Autoimmunity 468

- Release of Sequestered Antigens Can Induce Autoimmune Disease 469



CLINICAL FOCUS Why Are Women More Susceptible Than Men to Autoimmunity? Gender Differences in Autoimmune Disease 470

Molecular Mimicry May Contribute to Autoimmune Disease 471

There Is Evidence for Mimicry Between MBP and Viral Peptides 472

Inappropriate Expression of Class II MHC Molecules Can Sensitize Autoreactive T Cells 473

Polyclonal B-Cell Activation Can Lead to Autoimmune Disease 473

Treatment of Autoimmune Diseases 474

T-Cell Vaccination Is a Possible Therapy 474

Peptide Blockade of MHC Molecules Can Modulate Autoimmune Responses 476

Monoclonal Antibodies May Be Used to Treat Autoimmunity 476

Oral Antigens Can Induce Tolerance 478

21 Transplantation Immunology 479

Immunologic Basis of Graft Rejection 480

Allograft Rejection Displays Specificity and Memory 480

T Cells Play a Key Role in Allograft Rejection 480

Similar Antigenic Profiles Foster Allograft Acceptance 480

Graft Donors and Recipients Are Typed for RBC and MHC Antigens 482

Cell-Mediated Graft Rejection Occurs in Two Stages 484

SENSITIZATION STAGE 485

EFFECTOR STAGE 485

Clinical Manifestations of Graft Rejection 486

Preexisting Recipient Antibodies Mediate Hyperacute Rejection 486

Acute Rejection Is Mediated by T-Cell Responses 487

Chronic Rejection Occurs Months or Years Post-Transplant 487



CLINICAL FOCUS Is There a Clinical Future for Xenotransplantation? 488

General Immunosuppressive Therapy 488

Mitotic Inhibitors Thwart T-Cell Proliferation 489

Corticosteroids Suppress Inflammation 489

Certain Fungal Metabolites Are Immunosuppressants 489

Total Lymphoid Irradiation Eliminates Lymphocytes 490

Specific Immunosuppressive Therapy 490

Monoclonal Antibodies Can Suppress Graft-Rejection Responses 490

Blocking Co-Stimulatory Signals Can Induce Anergy 491

Immune Tolerance to Allografts 492

Privileged Sites Accept Antigenic Mismatches 492

Early Exposure to Alloantigens Can Induce Specific Tolerance 492

Clinical Transplantation 492

The Most Commonly Transplanted Organ Is the Kidney 494

Bone-Marrow Transplants Are Used for Leukemia, Anemia, and Immunodeficiency 494

Heart Transplant Is a Challenging Operation 494

Lung Transplants Are on the Increase 495

Liver Transplants Treat Congenital Defects and Damage from Viral or Chemical Agents 495

Pancreas Transplantation Offers a Cure for Diabetes Mellitus 495

Skin Grafts Are Used to Treat Burn Victims 495

Xenotransplantation May Be the Answer to the Shortage of Donor Organs 496

22 Cancer and the Immune System 499

Cancer: Origin and Terminology 499

Malignant Transformation of Cells 499

Oncogenes and Cancer Induction 501

Cancer-Associated Genes Have Many Functions 501

INDUCTION OF CELLULAR PROLIFERATION 501

INHIBITION OF CELLULAR PROLIFERATION 501

REGULATION OF PROGRAMMED CELL DEATH 502

Proto-Oncogenes Can Be Converted to Oncogenes 502

The Induction of Cancer Is a Multistep Process 504

Tumors of the Immune System 504

Tumor Antigens 505


Some Antigens Are Tumor-Specific 506

CHEMICALLY OR PHYSICALLY INDUCED TUMOR ANTIGENS 506

Tumor Antigens May Be Induced by Viruses 508

Most Tumor Antigens Are Not Unique to Tumor Cells 509

ONCOFETAL TUMOR ANTIGENS 509

ONCOGENE PROTEINS AS TUMOR ANTIGENS	510
TATAS ON HUMAN MELANOMAS	510
Tumors Can Induce Potent Immune Responses	510
NK Cells and Macrophages Are Important in Tumor Recognition	510
 CLINICAL FOCUS Cancer Vaccines Promise Hope for the Future	511
IMMUNE SURVEILLANCE THEORY	513
Tumor Evasion of the Immune System	513
Antitumor Antibodies Can Enhance Tumor Growth	513
Antibodies Can Modulate Tumor Antigens	513
Tumor Cells Frequently Express Low Levels of Class I MHC Molecules	514
Tumor Cells May Provide Poor Co-Stimulatory Signals	514
Cancer Immunotherapy	515
Manipulation of Co-Stimulatory Signals Can Enhance Immunity	515
Enhancement of APC Activity Can Modulate Tumor Immunity	515
Cytokine Therapy Can Augment Immune Responses to Tumors	516
INTERFERONS	516
TUMOR NECROSIS FACTORS	516
IN VITRO-ACTIVATED LAK AND TIL CELLS	516
Monoclonal Antibodies Are Effective in Treating Some Tumors	518
 23 Experimental Systems	 523
Experimental Animal Methods	523
Inbred Strains Can Reduce Experimental Variation	523
Adoptive-Transfer Systems Permit the In Vivo Examination of Isolated Cell Populations	524
SCID Mice and SCID-Human Mice Are Valuable Animal Models for Immunology	524
Cell Culture Systems	526
Primary Lymphoid Cell Cultures	526
Cloned Lymphoid Cell Lines	526
Hybrid Lymphoid Cell Lines	527
Protein Biochemistry	528
Radiolabeling Techniques Allow Sensitive Detection of Antigens or Antibodies	528
Biotin Labels Facilitate Detection of Small Amounts of Proteins	529
Gel Electrophoresis Separates Proteins by Size and Charge	529

X-Ray Crystallography Provides Structural Information	531
---	-----

Recombinant DNA Technology 533

Restriction Enzymes Cleave DNA at Precise Sequences	533
Cloning of DNA Sequences	534
Cloning Vectors Are Useful to Replicate Defined Sequences of DNA	534
Cloning of cDNA and Genomic DNA Allows the Isolation of Defined Sequences	534
Selection of DNA Clones	536
Southern Blotting Detects DNA of a Given Sequence	537
Northern Blotting Detects mRNA	537
Polymerase Chain Reaction Amplifies Small Quantities of DNA	537

Analysis of DNA Regulatory Sequences 538

DNA Footprinting Identifies the Sites Where Proteins Bind DNA	539
Gel-Shift Analysis Identifies DNA-Protein Complexes	540
CAT Assays Measure Transcriptional Activity	540

Gene Transfer into Mammalian Cells 540

Cloned Genes Transferred into Cultured Cells Allow In Vitro Analysis of Gene Function	540
Cloned Genes Transferred into Mouse Embryos Allow In Vivo Analysis of Gene Function	541
Transgenic Mice Aid in the Analysis of Gene Function	541
Gene-Targeted Knockout Mice Assess the Contribution of a Particular Gene	542
"Knock-In" Technology Allows the Replacement of an Endogenous Gene	544
Inducible Gene Targeting, the Cre/lox System, Targets Gene Deletion	544

Microarrays—An Approach for Analyzing Patterns of Gene Expression 546

 CLINICAL FOCUS Microarray Analysis as a Diagnostic Tool for Human Diseases	547
--	-----

Appendix I: CD Antigens A-1

Appendix II: Cytokines A-13

Glossary G-1

Answers to Study Questions AN-1

Index I-1