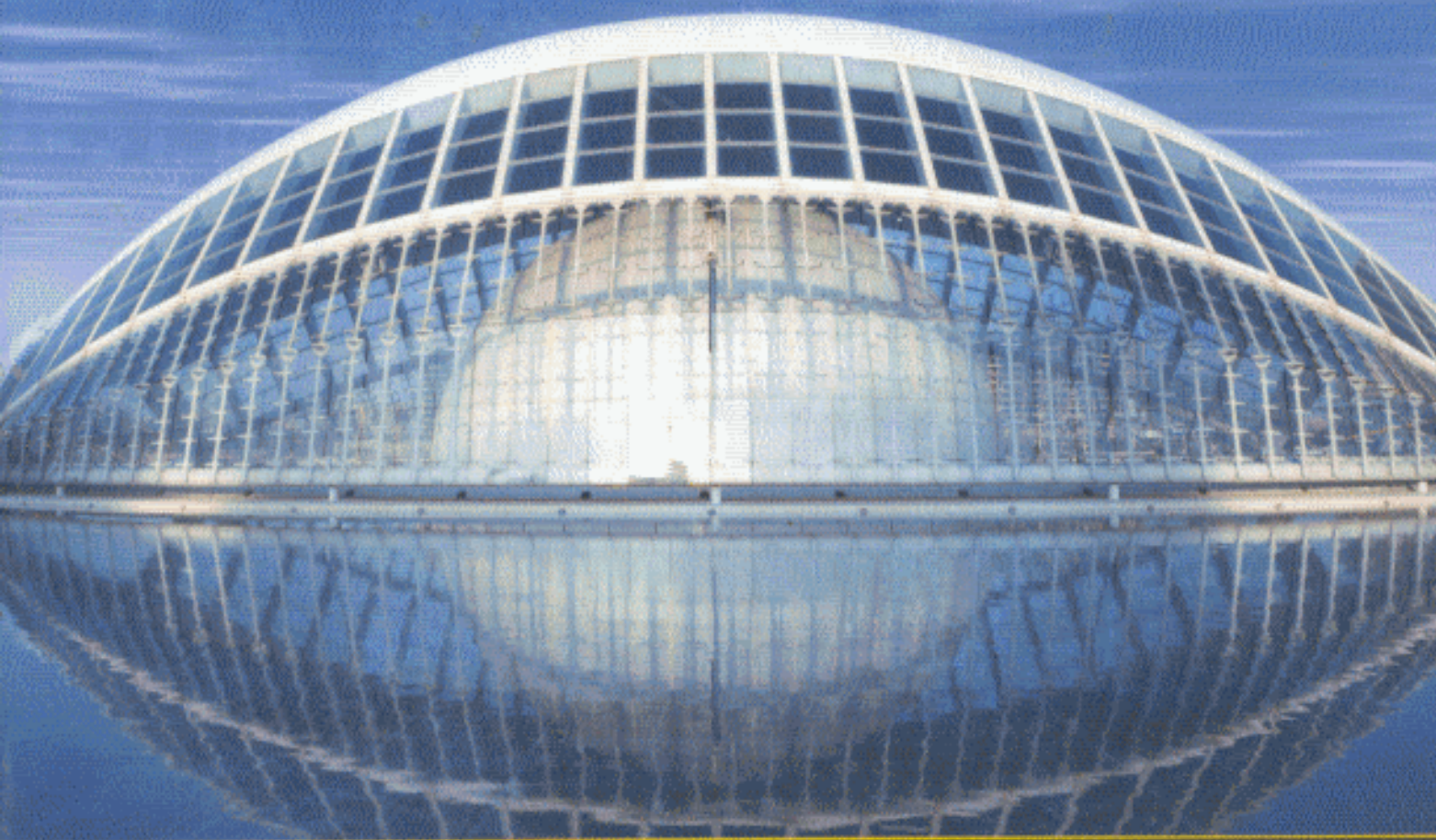
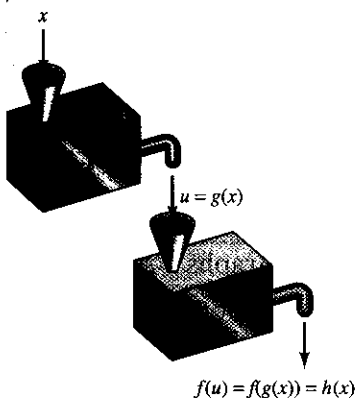


INTERNATIONAL EDITION

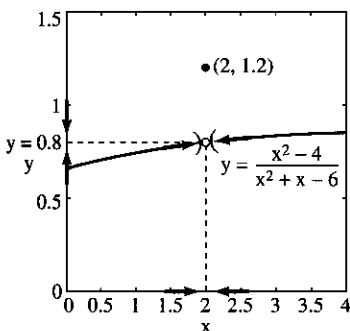
6e  
**CALCULUS**



Edwards & Penney





- 1.1 Functions and Mathematical Modeling 2
  - **PROJECT:** A Square Wading Pool 11
- 1.2 Graphs of Equations and Functions 12
  - **PROJECT:** A Broken Tree 23
- 1.3 Polynomials and Algebraic Functions 24
  - **PROJECT:** A Leaning Ladder 33
- 1.4 Transcendental Functions 33
  - **PROJECT:** A Spherical Asteroid 45
- 1.5 Preview: What Is Calculus? 45
  - REVIEW: Definitions and Concepts** 48



- 2.1 Tangent Lines and Slope Predictors 54
  - **PROJECT:** Numerical Slope Investigations 63
- 2.2 The Limit Concept 63
  - **PROJECT:** Limits, Slopes, and Logarithms 74
- 2.3 More About Limits 75
  - **PROJECT:** Numerical Epsilon-Delta Limit Investigations 87
- 2.4 The Concept of Continuity 88
  - REVIEW: Definitions, Concepts, Results** 99

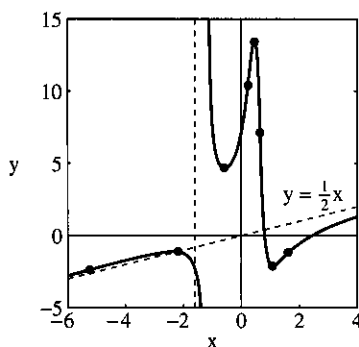
- 3.1 The Derivative and Rates of Change 102
- 3.2 Basic Differentiation Rules 115
- 3.3 The Chain Rule 126
- 3.4 Derivatives of Algebraic Functions 133






- 3.5 Maxima and Minima of Functions on Closed Intervals 142
  -  **PROJECT:** When Is Your Coffee Cup Stable? 150
- 3.6 Applied Optimization Problems 152
- 3.7 Derivatives of Trigonometric Functions 165
- 3.8 Successive Approximations and Newton's Method 176
  -  **PROJECT:** How Deep Does a Floating Ball Sink? 188
- REVIEW: Formulas, Concepts, Definitions 189**

## CHAPTER 4 ADDITIONAL APPLICATIONS OF THE DERIVATIVE

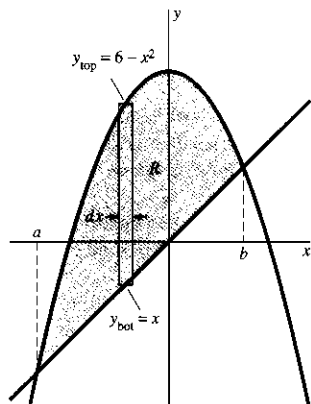
193





- 4.1 Implicit Functions and Related Rates 194
  -  **PROJECT:** Investigating the Folium of Descartes 203
- 4.2 Increments, Differentials, and Linear Approximation 204
- 4.3 Increasing and Decreasing Functions and the Mean Value Theorem 212
- 4.4 The First Derivative Test and Applications 222
  -  **PROJECT:** Making a Candy Box With Lid 232
- 4.5 Simple Curve Sketching 232
- 4.6 Higher Derivatives and Concavity 242
- 4.7 Curve Sketching and Asymptotes 256
  -  **PROJECT:** Locating Special Points on Exotic Graphs 267
- REVIEW: Definitions, Concepts, Results 267**

## CHAPTER 5 THE INTEGRAL

271



- 5.1 Introduction 272
- 5.2 Antiderivatives and Initial Value Problems 272
- 5.3 Elementary Area Computations 286
- 5.4 Riemann Sums and the Integral 298
  -  **PROJECT:** Calculator/Computer Riemann Sums 307
- 5.5 Evaluation of Integrals 308
- 5.6 The Fundamental Theorem of Calculus 318
- 5.7 Integration by Substitution 328
- 5.8 Areas of Plane Regions 336
- 5.9 Numerical Integration 346
  -  **PROJECT:** Trapezoidal and Simpson Approximations 359
- REVIEW: Definitions, Concepts, Results 361**

## CHAPTER 6 APPLICATIONS OF THE INTEGRAL

365

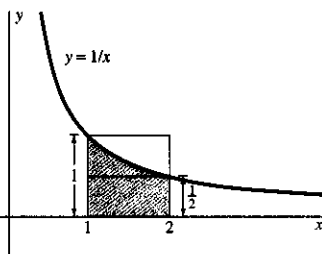
- 6.1 Riemann Sum Approximations 366
- 6.2 Volumes by the Method of Cross Sections 376

6.3	Volumes by the Method of Cylindrical Shells	387
	<b>PROJECT: Design Your Own Ring!</b>	395
6.4	Arc Length and Surface Area of Revolution	396
6.5	Force and Work	405
6.6	Centroids of Plane Regions and Curves	416
	<b>REVIEW: Definitions, Concepts, Results</b>	423

## CHAPTER 7 CALCULUS OF TRANSCENDENTAL FUNCTIONS

427

7.1	Exponential and Logarithmic Functions	428
	<b>PROJECT: Discovering the Number <math>e</math> for Yourself</b>	441
7.2	Indeterminate Forms and L'Hôpital's Rule	441
7.3	More Indeterminate Forms	449
7.4	The Natural Logarithm as an Integral	455
	<b>PROJECT: Natural Functional Equations</b>	466
7.5	Inverse Trigonometric Functions	467
7.6	Hyperbolic Functions	477
	<b>REVIEW: Formulas, Concepts, Definitions</b>	485



## CHAPTER 8 TECHNIQUES OF INTEGRATION

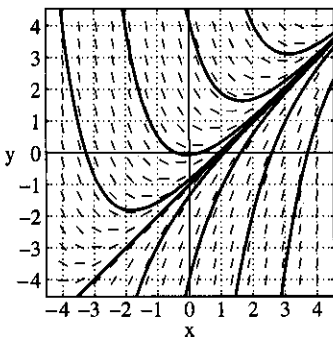
489

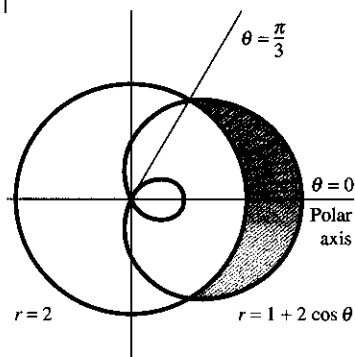
8.1	Introduction	490
8.2	Integral Tables and Simple Substitutions	490
8.3	Integration by Parts	494
8.4	Trigonometric Integrals	501
8.5	Rational Functions and Partial Fractions	508
8.6	Trigonometric Substitution	515
8.7	Integrals Involving Quadratic Polynomials	521
8.8	Improper Integrals	526
	<b>Summary</b>	539

## CHAPTER 9 DIFFERENTIAL EQUATIONS

545

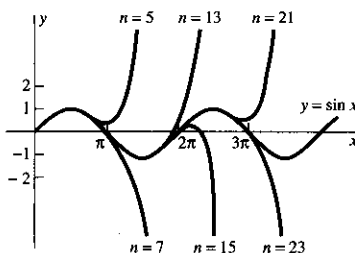
9.1	Simple Equations and Models	546
9.2	Slope Fields and Euler's Method	558
	<b>PROJECT: Computer-Assisted Slope Fields and Euler's Method</b>	567
9.3	Separable Equations and Applications	568
9.4	Linear Equations and Applications	575
9.5	Population Models	587
	<b>PROJECT: Predator-Prey Equations and Your Own Game Preserve</b>	597
9.6	Linear Second-Order Equations	598
9.7	Mechanical Vibrations	607
	<b>REVIEW: Definitions, Concepts, Results</b>	618





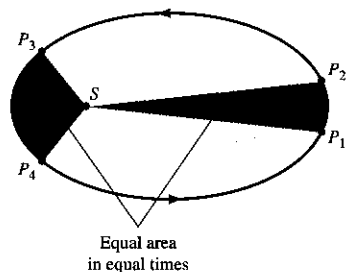
- 10.1 Analytic Geometry and the Conic Sections 624
- 10.2 Polar Coordinates 629
- 10.3 Area Computations in Polar Coordinates 638
- 10.4 Parametric Curves 643
  - PROJECT:** Trochoid Investigations 652
- 10.5 Integral Computations with Parametric Curves 653
  - PROJECT:** Moon Orbits and Race Tracks 660
- 10.6 Conic Sections and Applications 661
  - REVIEW: Concepts and Definitions** 679

## CHAPTER 11 INFINITE SERIES



- 11.1 Introduction 682
- 11.2 Infinite Sequences 682
  - PROJECT:** Nested Radicals and Continued Fractions 691
- 11.3 Infinite Series and Convergence 691
  - PROJECT:** Numerical Summation and Geometric Series 701
- 11.4 Taylor Series and Taylor Polynomials 702
  - PROJECT:** Calculating Logarithms on a Deserted Island 715
- 11.5 The Integral Test 715
  - PROJECT:** The Number  $\pi$ , Once and for All 722
- 11.6 Comparison Tests for Positive-Term Series 722
- 11.7 Alternating Series and Absolute Convergence 728
- 11.8 Power Series 737
- 11.9 Power Series Computations 750
  - PROJECT:** Calculating Trigonometric Functions on a Deserted Island 758
- 11.10 Series Solutions of Differential Equations 758
  - REVIEW: Definitions, Concepts, Results** 767

## CHAPTER 12 VECTORS, CURVES, AND SURFACES IN SPACE



- 12.1 Vectors in the Plane 772
- 12.2 Three-Dimensional Vectors 778
- 12.3 The Cross Product of Vectors 788
- 12.4 Lines and Planes in Space 796
- 12.5 Curves and Motion in Space 803
  - PROJECT:** Does a Pitched Baseball Really Curve? 816
- 12.6 Curvature and Acceleration 817
- 12.7 Cylinders and Quadric Surfaces 830
- 12.8 Cylindrical and Spherical Coordinates 838
  - REVIEW: Definitions, Concepts, Results** 845

- 13.1 Introduction 850
- 13.2 Functions of Several Variables 850
- 13.3 Limits and Continuity 860
- 13.4 Partial Derivatives 868
- 13.5 Multivariable Optimization Problems 878
- 13.6 Increments and Linear Approximation 889
- 13.7 The Multivariable Chain Rule 896
- 13.8 Directional Derivatives and the Gradient Vector 907
- 13.9 Lagrange Multipliers and Constrained Optimization 918
  - **PROJECT:** Numerical Solution of Lagrange Multiplier Systems 927
- 13.10 Critical Points of Functions of Two Variables 927
  - **PROJECT:** Critical Point Investigations 935
  - REVIEW: Definitions, Concepts, Results 936**

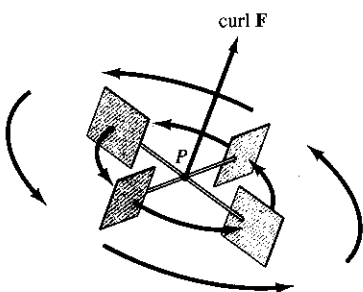
## CHAPTER 14 MULTIPLE INTEGRALS

939

- 14.1 Double Integrals 940
  - **PROJECT:** Midpoint Sums Approximating Double Integrals 947
- 14.2 Double Integrals over More General Regions 947
- 14.3 Area and Volume by Double Integration 954
- 14.4 Double Integrals in Polar Coordinates 961
- 14.5 Applications of Double Integrals 968
  - PROJECT:** Optimal Design of Downhill Race-Car Wheels 978
- 14.6 Triple Integrals 979
  - **PROJECT:** Archimedes' Floating Paraboloid 987
- 14.7 Integration in Cylindrical and Spherical Coordinates 988
- 14.8 Surface Area 996
- 14.9 Change of Variables in Multiple Integrals 1001
  - REVIEW: Definitions, Concepts, Results 1009**

## CHAPTER 15 VECTOR CALCULUS

1013



- 15.1 Vector Fields 1014
- 15.2 Line Integrals 1019
- 15.3 The Fundamental Theorem and Independence of Path 1030
- 15.4 Green's Theorem 1037
- 15.5 Surface Integrals 1047
  - **PROJECT:** Surface Integrals and Rocket Nose Cones 1057
- 15.6 The Divergence Theorem 1057
- 15.7 Stokes' Theorem 1065
  - REVIEW: Definitions, Concepts, Results 1072**

A:	Real Numbers and Inequalities	A-1
B:	The Coordinate Plane and Straight Lines	A-6
C:	Review of Trigonometry	A-13
D:	Proofs of the Limit Laws	A-19
E:	The Completeness of the Real Number System	A-23
F:	Existence of the Integral	A-28
G:	Approximations and Riemann Sums	A-33
H:	L'Hôpital's Rule and Cauchy's Mean Value Theorem	A-36
I:	Proof of Taylor's Formula	A-38
J:	Conic Sections as Sections of a Cone	A-39
K:	Proof of the Linear Approximation Theorem	A-40
L:	Units of Measurement and Conversion Factors	A-41
M:	Formulas from Algebra, Geometry, and Trigonometry	A-42
N:	The Greek Alphabet	A-44

## ANSWERS TO ODD-NUMBERED PROBLEMS

A-45

## REFERENCES FOR FURTHER STUDY

A-99

## INDEX

I-1

## TABLE OF INTEGRALS

TA-1

**PHOTO CREDITS** p. 1. CORBIS p. 53 (top left) Getty Images, Inc.; (bottom left) Courtesy of International Business Machines Corporation. Unauthorized use not permitted. (right) Navy Visual News Service p. 101 Wards Science/Science Source; (bottom right) C. H. Edwards p. 163 Richard Megna/Fundamental Photographs p. 193 (top left) The Royal Society of London; (bottom right) David E. Penney p. 271 Arf Resource, N.Y. p. 282 Richard Megna/Fundamental Photographs p. 365 The Granger Collection, New York p. 407 Lucas Bruno/AP/World Wide Photos p. 410 Omnia/Getty Images, Inc. p. 427 (top left) from *Portraits of Eminent Mathematicians* by David Eugene Smith published by Pictorial Mathematics, New York, 1936; (bottom right) Getty Images, Inc./PhotoDisc, Inc. p. 489 (top left) Library of Congress p. 545 CORBIS p. 623 (top left) Stock Montage, Inc./Historical Pictures Collection; (bottom right) Stephen Gerard/Science Service/Photo Researchers, Inc. p. 681 (top left) University of Cambridge; (bottom right) Image by David E. Penney p. 804 Robert Garvey/Black Star p. 849 Courtesy of the Library of Congress p. 939 (top left) The Granger Collection, New York; (bottom right) Jeff Greenberg/PhotoEdit p. 1013 (top left) CORBIS; (bottom right) Chandra X-Ray Center/A. Hobart

Maple is a registered trademark of Waterloo Maple Inc.

*Mathematica* is a registered trademark of Wolfram Research, Inc.

MATLAB is a registered trademark of The MathWorks, Inc.