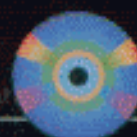
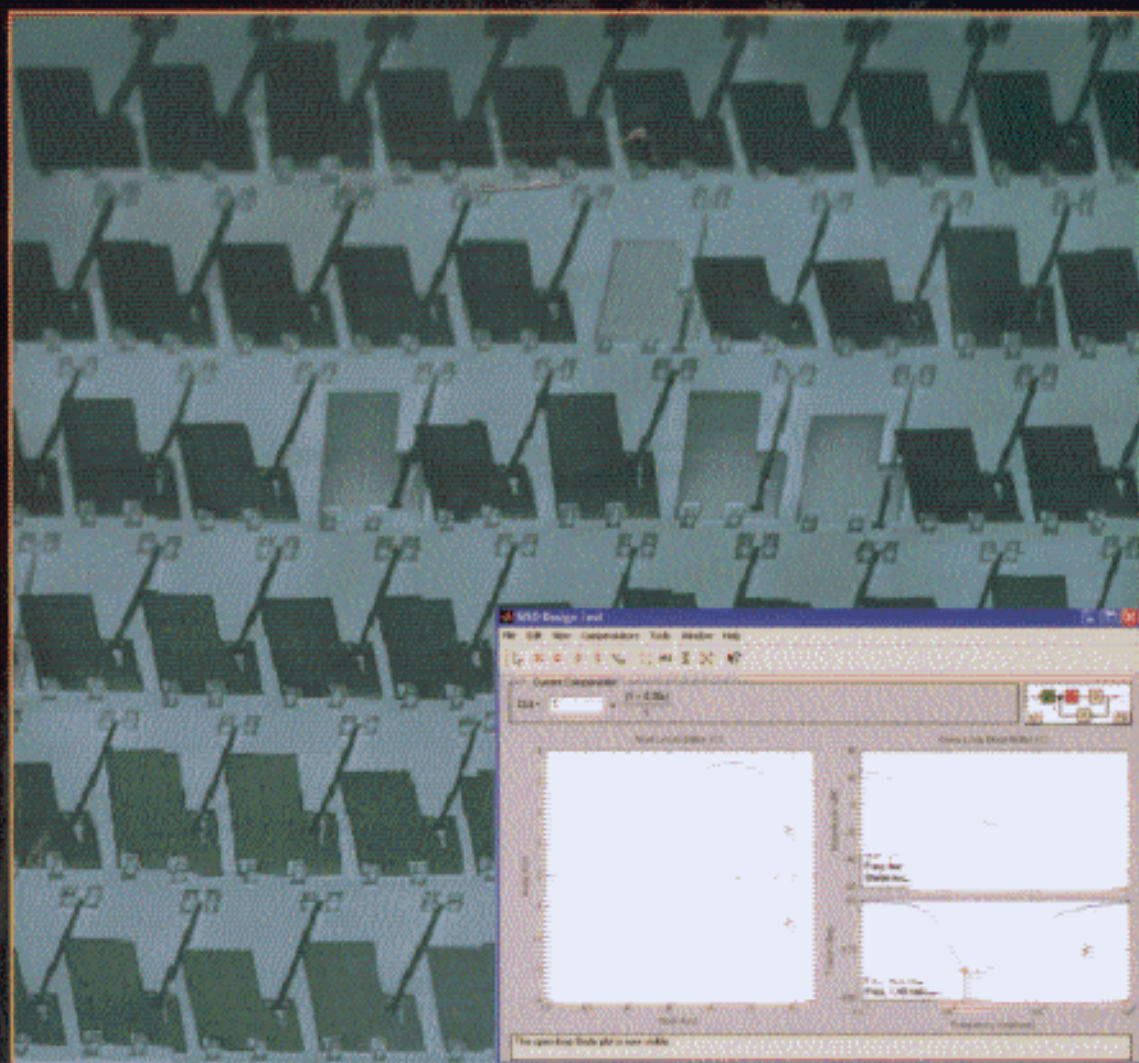


**Eighth Edition**

# **Automatic Control Systems**



**CD  
INCLUDED**



**Benjamin C. Kuo**  
**Farid Golnaraghi**

# Table of Contents

## Preface v

## ► CHAPTER 1

### Introduction 1

- 1-1 Introduction 1
  - 1-1-1 Basic Components of a Control System 2
  - 1-1-2 Examples of Control-System Applications 2
  - 1-1-3 Open-Loop Control Systems (Nonfeedback Systems) 6
  - 1-1-4 Closed-loop Control Systems (Feedback Control Systems) 7
- 1-2 What is Feedback and What are its Effects? 8
  - 1-2-1 Effect of Feedback on Overall Gain 8
  - 1-2-2 Effect of Feedback on Stability 9
  - 1-2-3 Effect of Feedback on External Disturbance or Noise 10
- 1-3 Types of Feedback Control Systems 11
  - 1-3-1 Linear versus Nonlinear Control Systems 11
  - 1-3-2 Time-Invariant versus Time-Varying Systems 12
- 1-4 Summary 15

## ► CHAPTER 2

### Mathematical Foundation 16

- 2-1 Introduction 16
- 2-2 Laplace Transform 17
  - 2-2-1 Definition of the Laplace Transform 17
  - 2-2-2 Inverse Laplace Transformation 18
  - 2-2-3 Important Theorems of the Laplace Transform 19
- 2-3 Inverse Laplace Transform by Partial-Fraction Expansion 21
  - 2-3-1 Partial-Fraction Expansion 22
- 2-4 Application of the Laplace Transform to the Solution of Linear Ordinary Differential Equations 25
- 2-5 Impulse Response and Transfer Functions of Linear Systems 27
  - 2-5-1 Impulse Response 27
  - 2-5-2 Transfer Function (Single-Input, Single-Output Systems) 27
  - 2-5-3 Transfer Function (Multivariable Systems) 29
- 2-6 MATLAB Tools and Case Studies 30
  - 2-6-1 Description and Use of Transfer Function Tool 30
- 2-7 Summary 41

## ► CHAPTER 3

### Block Diagrams and Signal-Flow Graphs 44

- 3-1 Block Diagrams 44
  - 3-1-1 Block Diagrams of Control Systems 45
  - 3-1-2 Block Diagrams and Transfer Functions of Multivariable Systems 46
- 3-2 Signal-Flow Graphs (SFGs) 48
  - 3-2-1 Basic Elements of an SFG 49
  - 3-2-2 Summary of the Basic Properties of SFG 50
  - 3-2-3 Definitions of SFG Terms 51
  - 3-2-4 SFG Algebra 53
  - 3-2-5 SFG of a Feedback Control System 54
  - 3-2-6 Gain Formula for SFG 54
  - 3-2-7 Application of the Gain Formula between Output Nodes and Noninput Nodes 56
  - 3-2-8 Application of the Gain Formula to Block Diagrams 57
- 3-3 State Diagram 58
  - 3-3-1 From Differential Equations to State Diagram 59
  - 3-3-2 From State Diagram to Transfer Function 61
  - 3-3-3 From State Diagram to State and Output Equations 61
- 3-4 MATLAB Tools and Case Studies 63
- 3-5 Summary 65

## ► CHAPTER 4

### Modeling of Physical Systems 77

- 4-1 Introduction 77
- 4-2 Modeling of Electrical Networks 77
- 4-3 Modeling of Mechanical Systems Elements 80
  - 4-3-1 Translational Motion 80
  - 4-3-2 Rotational Motion 83
  - 4-3-3 Conversion Between Translational and Rotational Motions 85
  - 4-3-4 Gear Trains 86
  - 4-3-5 Backlash and Dead Zone (Nonlinear Characteristics) 88
- 4-4 Equations of Mechanical Systems 89
- 4-5 Sensors and Encoders in Control Systems 94
  - 4-5-1 Potentiometer 94
  - 4-5-2 Tachometers 99
  - 4-5-3 Incremental Encoder 100
- 4-6 DC Motors in Control Systems 103
  - 4-6-1 Basic Operational Principles of DC Motors 104

4-6-2	Basic Classifications of PM DC Motors	104
4-6-3	Mathematical Modeling of PM DC Motors	107
4-7	Linearization of Nonlinear Systems	110
4-8	Systems with Transportation Lags (Time Delays)	114
4-8-1	Approximation of the Time-Delay Function by Rational Functions	115
4-9	A Sun-Seeker System	116
4-9-1	Coordinate System	117
4-9-2	Error Discriminator	117
4-9-3	Op-Amp	118
4-9-4	Servoamplifier	118
4-9-5	Tachometer	118
4-9-6	DC Motor	118
4-10	MATLAB Tools and Case Studies	120
4-11	Summary	120

## ► CHAPTER 5

### State Variable Analysis 138

5-1	Introduction	138
5-2	Vector-Matrix Representation of State Equations	138
5-3	State-Transition Matrix	140
5-3-1	Significance of the State-Transition Matrix	141
5-3-2	Properties of the State-Transition Matrix	142
5-4	State-Transition Equation	143
5-4-1	State-Transition Equation Determined from the State Diagram	145
5-5	Relationship between State Equations and High-Order Differential Equations	147
5-6	Relationship between State Equations and Transfer Functions	149
5-7	Characteristic Equations, Eigenvalues, and Eigenvectors	151
5-7-1	Eigenvalues	152
5-7-2	Eigenvectors	153
5-8	Similarity Transformation	155
5-8-1	Invariance Properties of the Similarity Transformations	156
5-8-2	Controllability Canonical Form (CCF)	156
5-8-3	Observability Canonical Form (OCF)	158
5-8-4	Diagonal Canonical Form (DCF)	159
5-8-5	Jordan Canonical Form (JCF)	160
5-9	Decompositions of Transfer Functions	161
5-9-1	Direct Decomposition	162
5-9-2	Cascade Decomposition	166
5-9-3	Parallel Decomposition	167
5-10	Controllability of Control Systems	169
5-10-1	General Concept of Controllability	170
5-10-2	Definition of State Controllability	171
5-10-3	Alternate Tests on Controllability	171

5-11	Observability of Linear Systems	173
5-11-1	Definition of Observability	173
5-11-2	Alternate Tests on Observability	174
5-12	Relationship Among Controllability, Observability, and Transfer Functions	175
5-13	Invariant Theorems on Controllability and Observability	177
5-14	A Final Illustrative Example: Magnetic-Ball Suspension System	178
5-15	MATLAB Tools and Case Studies	181
5-15-1	Description and Use of the State-Space Analysis Tool	182
5-15-2	Description and Use of tfssym for State-Space Applications	189
5-15-3	Another Example	189
5-16	Summary	195

## ► CHAPTER 6

### Stability of Linear Control Systems 211

6-1	Introduction	211
6-2	Bounded-Input, Bounded-Output (BIBO) Stability—Continuous-Data Systems	212
6-2-1	Relationship between Characteristic Equation Roots and Stability	212
6-3	Zero-Input and Asymptotic Stability of Continuous-Data Systems	213
6-4	Methods of Determining Stability	215
6-5	Routh-Hurwitz Criterion	216
6-5-1	Routh's Tabulation (1)	217
6-5-2	Special Cases When Routh's Tabulation Terminates Prematurely	219
6-6	MATLAB Tools and Case Studies	222
6-7	Summary	226

## ► CHAPTER 7

### Time-Domain Analysis of Control Systems 233

7-1	Time Response of Continuous-Data Systems: Introduction	233
7-2	Typical Test Signals for the Time Response of Control Systems	234
7-3	The Unit-Step Response and Time-Domain Specifications	236
7-4	Steady-State Error	237
7-4-1	Steady-State Error of Linear Continuous-Data Control Systems	237
7-4-2	Steady-State Error Caused by Nonlinear System Elements	249
7-5	Time Response of a First-Order System	251
7-5-1	Speed Control of a DC Motor	251
7-6	Transient Response of a Prototype Second-Order System	253
7-6-1	Damping Ratio and Damping Factor	253
7-6-2	Natural Undamped Frequency	255



7-6-3	Maximum Overshoot	257	8-4	Design Aspects of the Root Loci	330
7-6-4	Delay Time and Rise Time	259	8-4-1	Effects of Adding Poles and Zeros to $G(s)H(s)$	330
7-6-5	Settling Time	261	8-5	Root Contours (RC): Multiple-Parameter Variation	336
7-7	Time-Domain Analysis of a Position-Control System	265	8-6	Root Locus with the MATLAB Toolbox	342
7-7-1	Unit-Step Transient Response	268	8-7	Summary	345
7-7-2	The Steady-State Response	271			
7-7-3	Time Response to a Unit-Ramp Input	271	► CHAPTER 9		
7-7-4	Time Response of a Third-Order System	273	Frequency-Domain Analysis	352	
7-8	Effects of Adding Poles and Zeros to Transfer Functions	276	9-1	Introduction	352
7-8-1	Addition of a Pole to the Forward-Path Transfer Function: Unity-Feedback Systems	276	9-1-1	Frequency Response of Closed-Loop Systems	353
7-8-2	Addition of a Pole to the Closed-Loop Transfer Function	277	9-1-2	Frequency-Domain Specifications	355
7-8-3	Addition of a Zero to the Closed-Loop Transfer Function	279	9-2	$M_r$ , $\omega_r$ , and Bandwidth of the Prototype Second-Order System	356
7-8-4	Addition of a Zero to the Forward-Path Transfer Function: Unity-Feedback Systems	280	9-2-1	Resonant Peak and Resonant Frequency	356
7-9	Dominant Poles of Transfer Functions	281	9-2-2	Bandwidth	358
7-9-1	The Relative Damping Ratio	282	9-3	Effects of Adding a Zero to the Forward-Path Transfer Function	360
7-9-2	The Proper Way of Neglecting the Insignificant Poles with Consideration of the Steady-State Response	282	9-4	Effects of Adding a Pole to the Forward-Path Transfer Function	364
7-10	The Approximation of High-Order Systems by Low-Order System the Formal Approach	283	9-5	Nyquist Stability Criterion: Fundamentals	365
7-10-1	Approximation Criterion	284	9-5-1	Stability Problem	366
7-11	MATLAB Tools and Case Studies	293	9-5-2	Definition of Encircled and Enclosed	366
7-12	Summary	307	9-5-3	Number of Encirclements and Enclosures	367
► CHAPTER 8			9-5-4	Principle of the Argument	368
Root-Locus Technique	318		9-5-5	Nyquist Path	372
8-1	Introduction	318	9-5-6	Nyquist Criterion and the $L(s)$ or the $G(s)H(s)$ plot	373
8-2	Basic Properties of the Root Loci (RL)	319	9-6	Nyquist Criterion for Systems with Minimum-Phase Transfer Functions	374
8-3	Properties of the Root Loci	323	9-6-1	Application of the Nyquist Criterion to Minimum-Phase Transfer Functions that Are Not Strictly Proper	375
8-3-1	$K = 0$ and $K = \pm\infty$ Points	323	9-7	Relation Between the Root Loci and the Nyquist Plot	376
8-3-2	Number of Branches on the Root Loci	324	9-8	Illustrative Examples: Nyquist Criterion for Minimum-Phase Transfer Functions	378
8-3-3	Symmetry of the RL	324	9-9	Effects of Addition of Poles and Zeros to $L(s)$ on the Shape of the Nyquist Plot	382
8-3-4	Angles of Asymptotes of the RL: Behavior of the RL at $ s  = \infty$	324	9-10	Relative Stability: Gain Margin and Phase Margin	386
8-3-5	Intersect of the Asymptotes (Centroid)	325	9-10-1	Gain Margin (GM)	388
8-3-6	Root Loci on the Real Axis	325	9-10-2	Phase Margin (PM)	389
8-3-7	Angles of Departure and Angles of Arrival of the RL	325	9-11	Stability Analysis with the Bode Plot	392
8-3-8	Intersection of the RL with the Imaginary Axis	326	9-11-1	Bode Plots of Systems with Pure Time Delays	394
8-3-9	Breakaway Points (Saddle Points) on the RL	326	9-12	Relative Stability Related to the Slope of the Magnitude Curve of the Bode Plot	396
8-3-10	The Root Sensitivity [17, 18, 19]	326	9-12-1	Conditionally Stable System	396

9-13	Stability Analysis with the Magnitude-Phase Plot	399
9-14	Constant- $M$ Loci in the Magnitude-Phase Plane: The Nichols Chart	400
9-15	Nichols Chart Applied to Nonunity-Feedback Systems	406
9-16	Sensitivity Studies in the Frequency Domain	407
9-17	MATLAB Tools and Case Studies	409
9-18	Summary	421

## ► CHAPTER 10

### Design of Control Systems 433

10-1	Introduction	433
10-1-1	Design Specifications	433
10-1-2	Controller Configurations	435
10-1-3	Fundamental Principles of Design	437
10-2	Design with the PD Controller	438
10-2-1	Time-Domain Interpretation of PD Control	440
10-2-2	Frequency-Domain Interpretation of PD Control	442
10-2-3	Summary of Effects of PD Control	442
10-3	Design with the PI Controller	454
10-3-1	Time-Domain Interpretation and Design of PI Control	456
10-3-2	Frequency-Domain Interpretation and Design of PI Control	456
10-4	Design with the PID Controller	468
10-5	Design with Phase-Lead Controller	471
10-5-1	Time-Domain Interpretation and Design of Phase-Lead Control	473
10-5-2	Frequency-Domain Interpretation and Design of Phase-Lead Control	474
10-5-3	Effects of Phase-Lead Compensation	489
10-5-4	Limitations of Single-Stage Phase-Lead Control	489
10-5-5	Multistage Phase-Lead Controller	489
10-5-6	Sensitivity Considerations	493
10-6	Design with Phase-Lag Controller	494
10-6-1	Time-Domain Interpretation and Design of Phase-Lag Control	494
10-6-2	Frequency-Domain Interpretation and Design of Phase-Lag Control	496
10-6-3	Effects and Limitations of Phase-Lag Control	506
10-7	Design with Lead-Lag Controller	507
10-8	Pole-Zero Cancellation Design: Notch Filter	508
10-8-1	Second-Order Active Filter	511
10-8-2	Frequency-Domain Interpretation and Design	512
10-9	Forward and Feedforward Controllers	520
10-10	Design of Robust Control Systems	521
10-11	Minor-Loop Feedback Control	530

10-11-1	Rate-Feedback or Tachometer-Feedback Control	531
10-11-2	Minor-Loop Feedback Control with Active Filter	532
10-12	State-Feedback Control	534
10-13	Pole-Placement Design through State Feedback	535
10-14	State Feedback with Integral Control	540
10-15	MATLAB Tools and Case Studies	545
10-16	Summary	558

## ► CHAPTER 11

### The Virtual Lab 578

11-1	Introduction	578
11-2	Important Aspects in the Response of a DC Motor	579
11-2-1	Speed Response and the Effects of Inductance and Disturbance-Open Loop Response	579
11-2-2	Speed Control of DC Motors: Closed-Loop Response	581
11-2-3	Position Control	582
11-3	Description of the Virtual Experimental System	583
11-3-1	Motor	584
11-3-2	Position Sensor or Speed Sensor	584
11-3-3	Power Amplifier	584
11-3-4	Interface	584
11-4	Description of SIMLab and Virtual Lab Software	585
11-5	Simulation and Virtual Experiments	589
11-5-1	Open-Loop Speed	589
11-5-2	Open-Loop Sine Input	591
11-5-3	Speed Control	593
11-5-4	Position Control	596
11-6	Design Project	598
11-7	Summary	603

## ► INDEX 606

## ► APPENDIX A

### Complex Variable Theory CD-ROM

## ► APPENDIX B

### Differential and Difference Equations CD-ROM

## ► APPENDIX C

### Elementary Matrix Theory and Algebra CD-ROM

## ► APPENDIX D

### Laplace Transform Table CD-ROM

## ► APPENDIX E

### Operational Amplifiers CD-ROM

**► APPENDIX F**

Properties and Construction of the Root  
Loci CD-ROM

**► APPENDIX G**

Frequency-Domain Plots CD-ROM

**► APPENDIX H**

General Nyquist Criterion CD-ROM

**► APPENDIX I**

Discrete-Data Control Systems CD-ROM

**APPENDIX J**

z-Transform Table CD-ROM

**APPENDIX K**

**ACSYS 2002: Description of the Software** CD-ROM

**ANSWERS TO SELECTED PROBLEMS** CD-ROM