

# Handbook of Industrial Mixing

*Science and Practice*

*Edited by*

*Edward L. Paul*

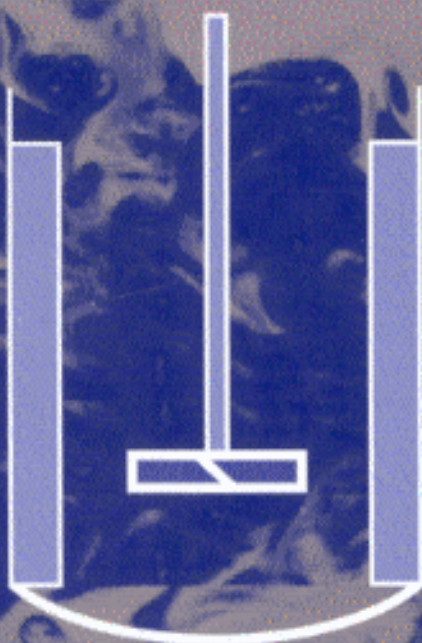
*Victor A. Atiemo-Obeng*

*Suzanne M. Kresta*

Sponsored by the North American Mixing Forum



INCLUDES  
CD-ROM



# CONTENTS

<b>Contributors</b>	<b>xxix</b>
<b>Introduction</b>	<b>xxxiii</b>
<i>Edward L. Paul, Victor A. Atiemo-Obeng, and Suzanne M. Kresta</i>	
<b>Mixing in Perspective</b>	<b>xxxiv</b>
Scope of Mixing Operations	xxxvi
Residence Time Distributions: Chapter 1	xxxvii
Mixing Fundamentals: Chapters 1–5	xxxix
Mixing Equipment: Chapters 6, 7, 8, and 21	xxxix
Miscible Liquid Blending: Chapters 3, 7, 9, and 16	xl
Solid–Liquid Suspension: Chapters 10, 17, and 18	xl
Gas–Liquid Contacting: Chapter 11	xli
Liquid–Liquid Mixing: Chapter 12	xlii
Mixing and Chemical Reactions/Reactor Design: Chapters 13 and 17	xlii
Heat Transfer and Mixing: Chapter 14	xliiii
Specialized Topics for Various Industries: Chapters 15–20	xliiii
<b>Conversations Overheard in a Chemical Plant</b>	<b>xliv</b>
The Problem	xliv
Competitive-Consecutive Reaction	xlv
Gas–Liquid Reaction	xlvi
Solid–Liquid Reaction	xlvi
Liquid–Liquid Reaction	xlvii
Crystallization	xlvii
<b>Using the Handbook</b>	<b>xlix</b>
Diagnostic Charts	l
Mixing Nomenclature and Unit Conversions	lv
<b>Acknowledgments</b>	<b>lix</b>
<b>References</b>	<b>lx</b>

<b>1</b>	<b>Residence Time Distributions</b>	<b>1</b>
	<i>E. Bruce Nauman</i>	
1-1	Introduction	1
1-2	Measurements and Distribution Functions	2
1-3	Residence Time Models of Flow Systems	5
	1-3.1 Ideal Flow Systems	5
	1-3.2 Hydrodynamic Models	6
	1-3.3 Recycle Models	7
1-4	Uses of Residence Time Distributions	9
	1-4.1 Diagnosis of Pathological Behavior	9
	1-4.2 Damping of Feed Fluctuations	9
	1-4.3 Yield Prediction	10
	1-4.4 Use with Computational Fluid Dynamic Calculations	14
1-5	Extensions of Residence Time Theory	15
	Nomenclature	16
	References	16
<b>2</b>	<b>Turbulence in Mixing Applications</b>	<b>19</b>
	<i>Suzanne M. Kresta and Robert S. Brodkey</i>	
2-1	Introduction	19
2-2	Background	20
	2-2.1 Definitions	20
	2-2.2 Length and Time Scales in the Context of Turbulent Mixing	24
	2-2.3 Relative Rates of Mixing and Reaction: The Damkoehler Number	32
2-3	Classical Measures of Turbulence	38
	2-3.1 Phenomenological Description of Turbulence	39
	2-3.2 Turbulence Spectrum: Quantifying Length Scales	45
	2-3.3 Scaling Arguments and the Energy Budget: Relating Turbulence Characteristics to Operating Variables	53
2-4	Dynamics and Averages: Reducing the Dimensionality of the Problem	61
	2-4.1 Time Averaging of the Flow Field: The Eulerian Approach	62
	2-4.2 Useful Approximations	63

3-5.2	Short-Term Mixing Structures	120
3-5.3	Asymptotic Directionality in the Kenics Mixer	120
3-5.4	Computation of the Stretching Field	123
3-5.5	Rates of Interface Growth	124
3-5.6	Intermaterial Area Density Calculation	125
3-5.7	Prediction of Striation Thickness Distributions in Realistic 3D Systems	128
3-6	Reactive Chaotic Flows	130
3-6.1	Reactions in 3D Laminar Systems	134
3-7	Summary	138
3-8	Conclusions	139
	Nomenclature	140
	References	141
<b>4</b>	<b>Experimental Methods</b>	<b>145</b>
	<b>Part A: Measuring Tools and Techniques for Mixing and Flow Visualization Studies</b>	<b>145</b>
	<i>David A. R. Brown, Pip N. Jones, and John C. Middleton</i>	
4-1	Introduction	145
4-1.1	Preliminary Considerations	146
4-2	Mixing Laboratory	147
4-2.1	Safety	147
4-2.2	Fluids: Rheology and Model Fluids	148
4-2.3	Scale of Operation	154
4-2.4	Basic Instrumentation Considerations	155
4-2.5	Materials of Construction	156
4-2.6	Lab Scale Mixing in Stirred Tanks	156
4-2.7	Lab Scale Mixing in Pipelines	160
4-3	Power Draw Or Torque Measurement	161
4-3.1	Strain Gauges	162
4-3.2	Air Bearing with Load Cell	164
4-3.3	Shaft Power Measurement Using a Modified Rheometer	164
4-3.4	Measurement of Motor Power	164
4-4	Single-Phase Blending	164
4-4.1	Flow Visualization	165
4-4.2	Selection of Probe Location	167
4-4.3	Approximate Mixing Time Measurement with Colorimetric Methods	167
4-4.4	Quantitative Measurement of the Mixing Time	169

4-4.5	RTD for CSTR	174
4-4.6	Local Mixedness: CoV, Reaction, and LIF	174
4-5	Solid-Liquid Mixing	177
4-5.1	Solids Distribution	177
4-5.2	Solids Suspension: Measurement of $N_{js}$	182
4-6	Liquid-Liquid Dispersion	187
4-6.1	Cleaning a Liquid-Liquid System	187
4-6.2	Measuring Interfacial Tension	188
4-6.3	$N_{jd}$ for Liquid-Liquid Systems	189
4-6.4	Distribution of the Dispersed Phase	189
4-6.5	Phase Inversion	190
4-6.6	Droplet Sizing	190
4-7	Gas-Liquid Mixing	194
4-7.1	Detecting the Gassing Regime	194
4-7.2	Cavity Type	194
4-7.3	Power Measurement	196
4-7.4	Gas Volume Fraction (Hold-up)	196
4-7.5	Volumetric Mass Transfer Coefficient, $k_L a$	196
4-7.6	Bubble Size and Specific Interfacial Area	199
4-7.7	Coalescence	199
4-7.8	Gas-Phase RTD	200
4-7.9	Liquid-Phase RTD	200
4-7.10	Liquid-Phase Blending Time	200
4-7.11	Surface Aeration	200
4-8	Other Techniques	201
4-8.1	Tomography	201
<b>Part B: Fundamental Flow Measurement</b>		<b>202</b>
<i>George Papadopoulos and Engin B. Arik</i>		
4-9	Scope of Fundamental Flow Measurement Techniques	202
4-9.1	Point versus Full Field Velocity Measurement Techniques: Advantages and Limitations	203
4-9.2	Nonintrusive Measurement Techniques	206
4-10	Laser Doppler Anemometry	207
4-10.1	Characteristics of LDA	208
4-10.2	Principles of LDA	208
4-10.3	LDA Implementation	212
4-10.4	Making Measurements	220
4-10.5	LDA Applications in Mixing	224

4-11	Phase Doppler Anemometry	226
4-11.1	Principles and Equations for PDA	226
4-11.2	Sensitivity and Range of PDA	230
4-11.3	Implementation of PDA	233
4-12	Particle Image Velocimetry	237
4-12.1	Principles of PIV	237
4-12.2	Image Processing	239
4-12.3	Implementation of PIV	243
4-12.4	PIV Data Processing	246
4-12.5	Stereoscopic (3D) PIV	247
4-12.6	PIV Applications in Mixing	249
	Nomenclature	250
	References	250
<b>5</b>	<b>Computational Fluid Mixing</b>	<b>257</b>
	<i>Elizabeth Marden Marshall and André Bakker</i>	
5-1	Introduction	257
5-2	Computational Fluid Dynamics	259
5-2.1	Conservation Equations	259
5-2.2	Auxiliary Models: Reaction, Multiphase, and Viscosity	268
5-3	Numerical Methods	273
5-3.1	Discretization of the Domain: Grid Generation	273
5-3.2	Discretization of the Equations	277
5-3.3	Solution Methods	281
5-3.4	Parallel Processing	284
5-4	Stirred Tank Modeling Using Experimental Data	285
5-4.1	Impeller Modeling with Velocity Data	285
5-4.2	Using Experimental Data	289
5-4.3	Treatment of Baffles in 2D Simulations	289
5-4.4	Combining the Velocity Data Model with Other Physical Models	290
5-5	Stirred Tank Modeling Using the Actual Impeller Geometry	292
5-5.1	Rotating Frame Model	292
5-5.2	Multiple Reference Frames Model	292
5-5.3	Sliding Mesh Model	295
5-5.4	Snapshot Model	300
5-5.5	Combining the Geometric Impeller Models with Other Physical Models	300

5-6	Evaluating Mixing from Flow Field Results	302
5-6.1	Graphics of the Solution Domain	303
5-6.2	Graphics of the Flow Field Solution	304
5-6.3	Other Useful Solution Variables	310
5-6.4	Mixing Parameters	313
5-7	Applications	315
5-7.1	Blending in a Stirred Tank Reactor	315
5-7.2	Chemical Reaction in a Stirred Tank	316
5-7.3	Solids Suspension Vessel	318
5-7.4	Fermenter	319
5-7.5	Industrial Paper Pulp Chests	321
5-7.6	Twin-Screw Extruders	322
5-7.7	Intermeshing Impellers	323
5-7.8	Kenics Static Mixer	325
5-7.9	HEV Static Mixer	326
5-7.10	LDPE Autoclave Reactor	328
5-7.11	Impeller Design Optimization	330
5-7.12	Helical Ribbon Impeller	332
5-7.13	Stirred Tank Modeling Using LES	333
5-8	Closing Remarks	336
5-8.1	Additional Resources	336
5-8.2	Hardware Needs	336
5-8.3	Learning Curve	337
5-8.4	Common Pitfalls and Benefits	337
	Acknowledgments	338
	Nomenclature	339
	References	341
<b>6</b>	<b>Mechanically Stirred Vessels</b>	<b>345</b>
	<i>Ramesh R. Hemrajani and Gary B. Tatterson</i>	
6-1	Introduction	345
6-2	Key Design Parameters	346
6-2.1	Geometry	347
6-2.2	Impeller Selection	354
6-2.3	Impeller Characteristics: Pumping and Power	358
6-3	Flow Characteristics	364
6-3.1	Flow Patterns	366
6-3.2	Shear	368
6-3.3	Impeller Clearance and Spacing	371
6-3.4	Multistage Agitated Tanks	372

6-3.5	Feed Pipe Backmixing	375
6-3.6	Bottom Drainage Port	376
6-4	Scale-up	376
6-5	Performance Characteristics and Ranges of Application	378
6-5.1	Liquid Blending	379
6-5.2	Solids Suspension	380
6-5.3	Immiscible Liquid-Liquid Mixing	381
6-5.4	Gas-Liquid Dispersion	382
6-6	Laminar Mixing in Mechanically Stirred Vessels	383
6-6.1	Close-Clearance Impellers	385
	Nomenclature	388
	References	389
<b>7</b>	<b>Mixing in Pipelines</b>	<b>391</b>
	<i>Arthur W. Etchells III and Chris F. Meyer</i>	
7-1	Introduction	391
7-2	Fluid Dynamic Modes: Flow Regimes	393
7-2.1	Reynolds Experiments in Pipeline Flow	393
7-2.2	Reynolds Number and Friction Factor	394
7-3	Overview of Pipeline Device Options by Flow Regime	396
7-3.1	Turbulent Single-Phase Flow	398
7-3.2	Turbulent Multiphase Flow	399
7-3.3	Laminar Flow	401
7-4	Applications	404
7-4.1	Process Results	404
7-4.2	Pipeline Mixing Applications	405
7-4.3	Applications Engineering	405
7-4.4	Sample of Industrial Applications	407
7-5	Blending and Radial Mixing in Pipeline Flow	409
7-5.1	Definition of Desired Process Result	410
7-5.2	Importance of Physical Properties	417
7-6	Tee Mixers	419
7-7	Static Or Motionless Mixing Equipment	422
7-7.1	Types of Static Mixers	426
7-7.2	Static Mixer Design Options by Flow Regime and Application	429
7-7.3	Selecting the Correct Static Mixer Design	429



7-8	Static Mixer Design Fundamentals	429
7-8.1	Pressure Drop	429
7-8.2	Blending Correlations for Laminar and Turbulent Flow	432
7-8.3	Which In-line Mixer to Use	437
7-8.4	Examples	438
7-9	Multiphase Flow in Motionless Mixers and Pipes	441
7-9.1	Physical Properties and Drop Size	441
7-9.2	Dispersion of Particulate Solids: Laminar Flow	450
7-9.3	Pressure Drop in Multiphase Flow	451
7-9.4	Dispersion versus Blending	452
7-9.5	Examples	452
7-10	Transitional Flow	459
7-11	Motionless Mixers: Other Considerations	460
7-11.1	Mixer Orientation	460
7-11.2	Tailpipe/Downstream Effects	460
7-11.3	Effect of Inlet Position	462
7-11.4	Scale-up for Motionless Mixers	462
7-12	In-line Mechanical Mixers	463
7-12.1	Rotor–Stator	464
7-12.2	Extruders	464
7-13	Other Process Results	465
7-13.1	Heat Transfer	465
7-13.2	Mass Transfer	470
7-14	Summary and Future Developments	473
	Acknowledgments	473
	Nomenclature	473
	References	475
<b>8</b>	<b>Rotor–Stator Mixing Devices</b>	<b>479</b>
	<i>Victor A. Atiemo-Obeng and Richard V. Calabrese</i>	
8-1	Introduction	479
8-1.1	Characteristics of Rotor–Stator Mixers	479
8-1.2	Applications of Rotor–Stator Mixers	480
8-1.3	Summary of Current Knowledge	480
8-2	Geometry and Design Configurations	482
8-2.1	Colloid Mills and Toothed Devices	482

8-2.2	Radial Discharge Impeller	482
8-2.3	Axial Discharge Impeller	483
8-2.4	Mode of Operation	485
8-3	Hydrodynamics of Rotor–Stator Mixers	489
8-3.1	Power Draw in Batch Mixers	489
8-3.2	Pumping Capacity	491
8-3.3	Velocity Field Information	491
8-3.4	Summary and Guidelines	496
8-4	Process Scale-up and Design Considerations	496
8-4.1	Liquid–Liquid Dispersion	498
8-4.2	Solids and Powder Dispersion Operations	501
8-4.3	Chemical Reactions	501
8-4.4	Additional Considerations for Scale-up and Comparative Sizing of Rotor–Stator Mixers	502
8-5	Mechanical Design Considerations	503
8-6	Rotor–Stator Mixing Equipment Suppliers	504
	Nomenclature	505
	References	505
<b>9</b>	<b>Blending of Miscible Liquids</b>	<b>507</b>
	<i>Richard K. Grenville and Alvin W. Nienow</i>	
9-1	Introduction	507
9-2	Blending of Newtonian Fluids in the Turbulent and Transitional Regimes	508
9-2.1	Literature Survey	508
9-2.2	Development of the Design Correlation	508
9-2.3	Use of the Design Correlation	510
9-2.4	Impeller Efficiency	511
9-2.5	Shaft Torque, Critical Speed, and Retrofitting	512
9-2.6	Nonstandard Geometries: Aspect Ratios Greater Than 1 and Multiple Impellers	513
9-2.7	Other Degrees of Homogeneity	513
9-2.8	Examples	514
9-3	Blending of Non-Newtonian, Shear-Thinning Fluids in the Turbulent and Transitional Regimes	516
9-3.1	Shear-Thinning Fluids	516
9-3.2	Literature Survey	517
9-3.3	Modifying the Newtonian Relationships for Shear-Thinning Fluids	518
9-3.4	Use of the Design Correlation	520
9-3.5	Impeller Efficiency	520

9-3.6	Cavern Formation and Size in Yield Stress Fluids	521
9-3.7	Examples	522
9-4	Blending in the Laminar Regime	527
9-4.1	Identifying the Operating Regime for Viscous Blending	528
9-4.2	Impeller Selection	529
9-4.3	Estimation of Power Draw	529
9-4.4	Estimation of Blend Time	530
9-4.5	Effect of Shear-Thinning Behavior	530
9-4.6	Design Example	530
9-5	Jet Mixing in Tanks	531
9-5.1	Literature Review	532
9-5.2	Jet Mixer Design Method	533
9-5.3	Jet Mixer Design Steps	535
9-5.4	Design Examples	536
	Nomenclature	538
	References	539
<b>10</b>	<b>Solid-Liquid Mixing</b>	<b>543</b>
	<i>Victor A. Atiemo-Obeng, W. Roy Penney, and Piero Armenante</i>	
10-1	Introduction	543
10-1.1	Scope of Solid-Liquid Mixing	544
10-1.2	Unit Operations Involving Solid-Liquid Mixing	544
10-1.3	Process Considerations for Solid-Liquid Mixing Operations	545
10-2	Hydrodynamics of Solid Suspension and Distribution	548
10-2.1	Settling Velocity and Drag Coefficient	550
10-2.2	States of Solid Suspension and Distribution	556
10-3	Measurements and Correlations for Solid Suspension and Distribution	557
10-3.1	Just Suspended Speed in Stirred Tanks	558
10-3.2	Cloud Height and Solids Distribution	562
10-3.3	Suspension of Solids with Gas Dispersion	562
10-3.4	Suspension of Solids in Liquid-Jet Stirred Vessels	563
10-3.5	Dispersion of Floating Solids	564
10-4	Mass Transfer in Agitated Solid-Liquid Systems	565
10-4.1	Mass Transfer Regimes in Mechanically Agitated Solid-Liquid Systems	565

10-4.2	Effect of Impeller Speed on Solid–Liquid Mass Transfer	568
10-4.3	Correlations for the Solid–Liquid Mass Transfer	569
10-5	Selection, Scale-up, and Design Issues for Solid–Liquid Mixing Equipment	573
10-5.1	Process Definition	573
10-5.2	Process Scale-up	574
10-5.3	Laboratory or Pilot Plant Experiments	575
10-5.4	Tips for Laboratory or Pilot Plant Experimentation	576
10-5.5	Recommendations for Solid–Liquid Mixing Equipment	577
10-5.6	Baffles	579
10-5.7	Selection and Design of Impeller	579
10-5.8	Impeller Speed and Power	580
10-5.9	Shaft, Hub, and Drive	580
	Nomenclature	581
	References	582
<b>11</b>	<b>Gas–Liquid Mixing in Turbulent Systems</b>	<b>585</b>
	<i>John C. Middleton and John M. Smith</i>	
11-1	Introduction	585
11-1.1	New Approaches and New Developments	586
11-1.2	Scope of the Chapter	586
11-1.3	Gas–Liquid Mixing Process Objectives and Mechanisms	589
11-2	Selection and Configuration of Gas–Liquid Equipment	591
11-2.1	Sparged Systems	595
11-2.2	Self-Inducers	595
11-2.3	Recommendations for Agitated Vessels	596
11-3	Flow Patterns and Operating Regimes	599
11-3.1	Stirred Vessels: Gas Flow Patterns	599
11-3.2	Stirred Vessels: Liquid Mixing Time	605
11-4	Power	607
11-4.1	Static Mixers	607
11-4.2	Gassed Agitated Vessels, Nonboiling	607
11-4.3	Agitated Vessels, Boiling, Nongassed	612
11-4.4	Agitated Vessels, Hot Gassed Systems	617
11-4.5	Prediction of Power by CFD	619
11-5	Gas Hold-up or Retained Gas Fraction	620
11-5.1	In-line Mixers	620

11-5.2	(Cold) Agitated Vessels, Nonboiling	620
11-5.3	Agitated Vessels, Boiling (Nongassed)	622
11-5.4	Hold-up in Hot Sparged Reactors	623
11-6	Gas-Liquid Mass Transfer	626
11-6.1	Agitated Vessels	627
11-6.2	In-line Mixers	630
11-6.3	Gas-Liquid Mass Transfer with Reaction	631
11-7	Bubble Size	632
11-8	Consequences of Scale-up	633
	Nomenclature	634
	References	635
<b>12</b>	<b>Immiscible Liquid-Liquid Systems</b>	<b>639</b>
	<i>Douglas E. Leng and Richard V. Calabrese</i>	
12-1	Introduction	639
12-1.1	Definition of Liquid-Liquid Systems	639
12-1.2	Practical Relevance	640
12-1.3	Fundamentals: Breakup, Coalescence, Phase Inversion, and Drop Size Distribution	641
12-1.4	Process Complexities in Scale-up	646
12-1.5	Classification by Flow Regime and Liquid Concentration	647
12-1.6	Scope and Approach	649
12-2	Liquid-Liquid Dispersion	649
12-2.1	Introduction	649
12-2.2	Breakup Mechanism and Daughter Drop Production in Laminar Flow	651
12-2.3	Drop Dispersion in Turbulent Flow	656
12-2.4	Time to Equilibrium and Transient Drop Size in Turbulent Flow	668
12-2.5	Summary	679
12-3	Drop Coalescence	679
12-3.1	Introduction	679
12-3.2	Detailed Studies for Single or Colliding Drops	687
12-3.3	Coalescence Frequency in Turbulent Flow	692
12-3.4	Conclusions, Summary, and State of Knowledge	696
12-4	Population Balances	697
12-4.1	Introduction	697
12-4.2	History and Literature	698
12-4.3	Population Balance Equations	698

12-4.4	Application of PBEs to Liquid–Liquid Systems	700
12-4.5	Prospects and Limitations	700
12-5	More Concentrated Systems	704
12-5.1	Introduction	704
12-5.2	Differences from Low Concentration Systems	705
12-5.3	Viscous Emulsions	706
12-5.4	Phase Inversion	707
12-6	Other Considerations	710
12-6.1	Introduction	710
12-6.2	Suspension of Drops	711
12-6.3	Interrelationship between Suspension, Dispersion, and Coalescence	713
12-6.4	Practical Aspects of Dispersion Formation	714
12-6.5	Surfactants and Suspending Agents	715
12-6.6	Oswald Ripening	717
12-6.7	Heat and Mass Transfer	717
12-6.8	Presence of a Solid Phase	718
12-6.9	<i>Effect of a Gas Phase</i>	719
12-7	Equipment Selection for Liquid–Liquid Operations	719
12-7.1	Introduction	719
12-7.2	Impeller Selection and Vessel Design	719
12-7.3	Power Requirements	727
12-7.4	Other Considerations	727
12-7.5	Recommendations	729
12-8	Scale-up of Liquid–Liquid Systems	730
12-8.1	Introduction	730
12-8.2	Scale-up Rules for Dilute Systems	731
12-8.3	Scale-up of Concentrated, Noncoalescing Dispersions	732
12-8.4	Scale-up of Coalescing Systems of All Concentrations	735
12-8.5	Dispersion Time	735
12-8.6	Design Criteria and Guidelines	736
12-9	Industrial Applications	737
12-9.1	Introduction	737
12-9.2	Industrial Applications	737
12-9.3	Summary	742
	Nomenclature	742
	References	746

## 13 Mixing and Chemical Reactions

755

*Gary K. Patterson, Edward L. Paul, Suzanne M. Kresta,  
and Arthur W. Etchells III*

13-1	Introduction	755
13-1.1	How Mixing Can Cause Problems	757
13-1.2	Reaction Schemes of Interest	758
13-1.3	Relating Mixing and Reaction Time Scales: The Mixing Damkoehler Number	761
13-1.4	Definitions	764
13-2	Principles of Reactor Design for Mixing-Sensitive Systems	766
13-2.1	Mixing Time Scales: Calculation of the Damkoehler Number	766
13-2.2	How Mixing Affects Reaction in Common Reactor Geometries	778
13-2.3	Mixing Issues Associated with Batch, Semibatch, and Continuous Operation	780
13-2.4	Effects of Feed Point, Feed Injection Velocity, and Diameter	782
13-2.5	Mixing-Sensitive Homogeneous Reactions	785
13-2.6	Simple Guidelines	790
13-3	Mixing and Transport Effects in Heterogeneous Chemical Reactors	790
13-3.1	Classification of Reactivity in Heterogeneous Reactions	794
13-3.2	Homogeneous versus Heterogeneous Selectivity	795
13-3.3	Heterogeneous Reactions with Parallel Homogeneous Reactions	800
13-3.4	Gas Sparged Reactors	800
13-3.5	Liquid-Liquid Reactions	809
13-3.6	Liquid-Solid Reactions	818
13-4	Scale-up and Scale-down of Mixing-Sensitive Systems	821
13-4.1	General Mixing Considerations	822
13-4.2	Scale-up of Two-Phase Reactions	824
13-4.3	Scale-up Protocols	826
13-5	Simulation of Mixing and Chemical Reaction	833
13-5.1	General Balance Equations	834
13-5.2	Closure Equations for the Correlation Terms in the Balance Equations	836
13-5.3	Assumed Turbulent Plug Flow with Simplified Closure	839

13-5.4	Blending or Mesomixing Control of Turbulently Mixed Chemical Reactions	843
13-5.5	Lamellar Mixing Simulation Using the Engulfment Model	846
13-5.6	Monte Carlo Coalescence–Dispersion Simulation of Mixing	848
13-5.7	Paired-Interaction Closure for Multiple Chemical Reactions	850
13-5.8	Closure Using $\beta$ -PFD Simulation of Mixing	853
13-5.9	Simulation of Stirred Reactors with Highly Exothermic Reactions	854
13-5.10	Comments on the Use of Simulation for Scale-up and Reactor Performance Studies	856
13-6	Conclusions	857
	Nomenclature	859
	References	861
<b>14</b>	<b>Heat Transfer</b>	<b>869</b>
	<i>W. Roy Penney and Victor A. Atiemo-Obeng</i>	
14-1	Introduction	869
14-2	Fundamentals	870
14-3	Most Cost-Effective Heat Transfer Geometry	873
	14-3.1 Mechanical Agitators	874
	14-3.2 Gas Sparging	874
	14-3.3 Vessel Internals	874
14-4	Heat Transfer Coefficient Correlations	878
	14-4.1 Correlations for the Vessel Wall	880
	14-4.2 Correlations for the Bottom Head	880
	14-4.3 Correlations for Helical Coils	881
	14-4.4 Correlations for Vertical Baffle Coils	881
	14-4.5 Correlations for Plate Coils	881
	14-4.6 Correlations for Anchors and Helical Ribbons	881
14-5	Examples	882
	Nomenclature	883
	References	884
<b>15</b>	<b>Solids Mixing</b>	<b>887</b>
	<b>Part A: Fundamentals of Solids Mixing</b>	<b>887</b>
	<i>Fernando J. Muzzio, Albert Alexander, Chris Goodridge, Elizabeth Shen, and Troy Shinbrot</i>	
15-1	Introduction	887



15-2	Characterization of Powder Mixtures	888
15-2.1	Ideal Mixtures versus Real Mixtures	888
15-2.2	Powder Sampling	891
15-2.3	Scale of Scrutiny	895
15-2.4	Quantification of Solids Mixing: Statistical Methods	896
15-3	Theoretical Treatment of Granular Mixing	898
15-3.1	Definition of the Granular State	899
15-3.2	Mechanisms of Mixing: Freely-Flowing Materials	901
15-3.3	Mechanisms of Mixing: Weakly Cohesive Material	904
15-3.4	De-mixing	906
15-4	Batch Mixers and Mechanisms	909
15-4.1	Tumbling Mixers	909
15-4.2	Convective Mixers	912
15-5	Selection and Scale-up of Solids Batch Mixing Equipment	917
15-5.1	Scaling Rules for Tumbling Blenders	917
15-5.2	Final Scale-up and Scale-down Considerations	922
15-6	Conclusions	923
	Acknowledgments	923
<b>Part B: Mixing of Particulate Solids in the Process Industries</b>		<b>924</b>
<i>Konanur Manjunath, Shrikant Dhodapkar, and Karl Jacob</i>		
15-7	Introduction	924
15-7.1	Scope of Solid-Solid Mixing Tasks	925
15-7.2	Key Process Questions	925
15-8	Mixture Characterization and Sampling	926
15-8.1	Type of Mixtures	926
15-8.2	Statistics of Random Mixing	928
15-8.3	Interpretation of Measured Variance	931
15-8.4	Sampling	931
15-9	Selection of Batch and Continuous Mixers	933
15-9.1	Batch Mixing	934
15-9.2	Continuous Mixing	934
15-9.3	Comparison between Batch and Continuous Mixing	934
15-9.4	Selection of Mixers	936

15-10	Fundamentals and Mechanics of Mixer Operation	936
15-10.1	Mixing Mechanisms	936
15-10.2	Segregation Mechanisms	939
15-10.3	Mixer Classification	940
15-11	Continuous Mixing of Solids	965
15-11.1	Types of Continuous Mixers	967
15-12	Scale-up and Testing of Mixers	968
15-12.1	Principle of Similarity	969
15-12.2	Scale-up of Agitated Centrifugal Mixers	969
15-12.3	Scale-up of Ribbon Mixers	972
15-12.4	Scale-up of Conical Screw Mixers (Nauta Mixers)	973
15-12.5	Scaling of Silo Blenders	974
15-12.6	Specifying a Mixer	974
15-12.7	Testing a Mixer	975
15-12.8	Testing a Batch Mixer	977
15-12.9	Testing a Continuous Mixer	977
15-12.10	Process Safety in Solids Mixing, Handling, and Processing	977
	Nomenclature	981
	References	982
<b>16</b>	<b>Mixing of Highly Viscous Fluids, Polymers, and Pastes</b>	<b>987</b>
	<i>David B. Todd</i>	
16-1	Introduction	987
16-2	Viscous Mixing Fundamentals	987
16-2.1	Challenges of High Viscosity Mixing	987
16-2.2	Dispersive and Distributive Mixing	988
16-2.3	Elongation and Shear Flows	989
16-2.4	Power and Heat Transfer Aspects	992
16-3	Equipment for Viscous Mixing	994
16-3.1	Batch Mixers	994
16-3.2	Continuous Mixers	1000
16-3.3	Special Mixers	1017
16-4	Equipment Selection	1020
16-5	Summary	1022
	Nomenclature	1023
	References	1024

<b>17</b>	<b>Mixing in the Fine Chemicals and Pharmaceutical Industries</b>	<b>1027</b>
	<i>Edward L. Paul, Michael Midler, and Yongkui Sun</i>	
17-1	Introduction	1027
17-2	General Considerations	1028
17-2.1	Batch and Semibatch Reactors	1029
17-2.2	Batch and Semibatch Vessel Design and Mixing	1030
17-2.3	Multipurpose Design	1032
17-2.4	Batch and Semibatch Scale-up Methods	1035
17-2.5	Continuous Reactors	1035
17-2.6	Reaction Calorimetry	1036
17-3	Homogeneous Reactions	1038
17-3.1	Mixing-Sensitive Reactions	1039
17-3.2	Scale-up of Homogeneous Reactions	1042
17-3.3	Reactor Design for Mixing-Sensitive Homogeneous Reactions	1043
17-4	Heterogeneous Reactions	1044
17-4.1	Laboratory Scale Development	1045
17-4.2	Gas-Liquid and Gas-Liquid-Solid Reactions	1045
17-4.3	Liquid-Liquid Dispersed Phase Reactions	1050
17-4.4	Solid-Liquid Systems	1052
17-5	Mixing and Crystallization	1057
17-5.1	Aspects of Crystallization that Are Subject to Mixing Effects	1059
17-5.2	Mixing Scale-up in Crystallization Operations	1062
	References	1064
<b>18</b>	<b>Mixing in the Fermentation and Cell Culture Industries</b>	<b>1071</b>
	<i>Ashraf Amanullah, Barry C. Buckland, and Alvin W. Nienow</i>	
18-1	Introduction	1071
18-2	Scale-up/Scale-down of Fermentation Processes	1073
18-2.1	Interaction between Liquid Hydrodynamics and Biological Performance	1073
18-2.2	Fluid Dynamic Effects of Different Scale-up Rules	1076
18-2.3	Influence of Agitator Design	1089
18-2.4	Mixing and Circulation Time Studies	1090
18-2.5	Scale-down Approach	1094
18-2.6	Regime Analysis	1095

18-2.7	Effects of Fluctuating Environmental Conditions on Microorganisms	1096
18-2.8	Required Characteristics of a Model Culture for Scale-down Studies	1103
18-2.9	Use of <i>Bacillus subtilis</i> as an Oxygen- and pH-Sensitive Model Culture	1104
18-2.10	Experimental Simulations of Dissolved Oxygen Gradients Using <i>Bacillus subtilis</i>	1104
18-2.11	Experimental Simulations of pH Gradients Using <i>Bacillus subtilis</i>	1110
18-3	Polysaccharide Fermentations	1113
18-3.1	Rheological Characterization of Xanthan Gum	1114
18-3.2	Effects of Agitation Speed and Dissolved Oxygen in Xanthan Fermentations	1115
18-3.3	Prediction of Cavern Sizes in Xanthan Fermentations Using Yield Stress and Fluid Velocity Models	1116
18-3.4	Influence of Impeller Type and Bulk Mixing on Xanthan Fermentation Performance	1119
18-3.5	Factors Affecting the Biopolymer Quality in Xanthan and Other Polysaccharide Fermentations	1123
18-4	Mycelial Fermentations	1124
18-4.1	Energy Dissipation/Circulation Function as a Correlator of Mycelial Fragmentation	1127
18-4.2	Dynamics of Mycelial Aggregation	1132
18-4.3	Effects of Agitation Intensity on Hyphal Morphology and Product Formation	1133
18-4.4	Impeller Retrofitting in Large Scale Fungal Fermentations	1137
18-5	<i>Escherichia coli</i> Fermentations	1137
18-5.1	Effects of Agitation Intensity in <i>E. coli</i> Fermentations	1138
18-6	Cell Culture	1139
18-6.1	Shear Damage and Kolmogorov's Theory of Isotropic Turbulence	1139
18-6.2	Cell Damage Due to Agitation Intensity in Suspension Cell Cultures	1141
18-6.3	Bubble-Induced Cell Damage in Sparged Suspension Cultures	1144
18-6.4	Use of Surfactants to Reduce Cell Damage Due to Bubble Aeration in Suspension Culture	1146

18-6.5	Cell Damage Due to Agitation Intensity in Microcarrier Cultures	1148
18-6.6	Physical and Chemical Environment	1149
18-7	Plant Cell Cultures	1152
	Nomenclature	1154
	References	1157
<b>19</b>	<b>Fluid Mixing Technology in the Petroleum Industry</b>	<b>1171</b>
	<i>Ramesh R. Hemrajani</i>	
19-1	Introduction	1171
19-2	Shear-Thickening Fluid for Oil Drilling Wells	1173
19-3	Gas Treating for CO <sub>2</sub> Reduction	1174
19-4	Homogenization of Water in Crude Oil Transfer Lines	1175
	19-4.1 Fixed Geometry Static Mixers	1176
	19-4.2 Variable Geometry In-line Mixer	1177
	19-4.3 Rotary In-line Blender	1178
	19-4.4 Recirculating Jet Mixer	1179
19-5	Sludge Control in Crude Oil Storage Tanks	1179
	19-5.1 Side-Entering Mixers	1180
	19-5.2 Rotating Submerged Jet Nozzle	1181
19-6	Desalting	1183
19-7	Alkylation	1185
19-8	Other Applications	1185
	Nomenclature	1186
	References	1186
<b>20</b>	<b>Mixing in the Pulp and Paper Industry</b>	<b>1187</b>
	<i>Chad P. J. Bennington</i>	
20-1	Introduction	1187
20-2	Selected Mixing Applications in Pulp and Paper Processes: Nonfibrous Systems	1189
	20-2.1 Liquid-Liquid Mixing	1189
	20-2.2 Gas-Liquid Mixing	1189
	20-2.3 Solid-Liquid Mixing	1192
	20-2.4 Gas-Solid-Liquid Mixing	1194
20-3	Pulp Fiber Suspensions	1196
	20-3.1 Pulp Suspension Mixing	1196
	20-3.2 Characterization of Pulp Suspensions	1196
	20-3.3 Suspension Yield Stress	1199
	20-3.4 Turbulent Behavior of Pulp Suspensions	1201
	20-3.5 Turbulence Suppression in Pulp Suspensions	1203
	20-3.6 Gas in Suspension	1204

20-4	Scales of Mixing in Pulp Suspensions	1206
20-5	Macroscale Mixing/Pulp Blending Operations	1206
	20-5.1 Homogenization and Blending	1206
	20-5.2 Repulping	1210
	20-5.3 Lumen Loading	1213
20-6	Mixing in Pulp Bleaching Operations	1214
	20-6.1 Pulp Bleaching Process	1214
	20-6.2 Mixing Equipment in Pulp Bleaching Objectives	1221
	20-6.3 Mixing Assessment in Pulp Suspensions	1231
	20-6.4 Benefits of Improved Mixing	1237
20-7	Conclusions	1238
	Nomenclature	1238
	References	1240
<b>21</b>	<b>Mechanical Design of Mixing Equipment</b>	<b>1247</b>
	<i>David S. Dickey and Julian B. Fasano</i>	
21-1	Introduction	1247
21-2	Mechanical Features and Components of Mixers	1248
	21-2.1 Impeller-Type Mixing Equipment	1249
	21-2.2 Other Types of Mixers	1254
21-3	Motors	1258
	21-3.1 Electric Motors	1258
	21-3.2 Air Motors	1267
	21-3.3 Hydraulic Motors	1267
21-4	Speed Reducers	1267
	21-4.1 Gear Reducers	1268
	21-4.2 Belt Drives	1277
21-5	Shaft Seals	1278
	21-5.1 Stuffing Box Seals	1278
	21-5.2 Mechanical Seals	1280
	21-5.3 Lip Seals	1285
	21-5.4 Hydraulic Seals	1285
	21-5.5 Magnetic Drives	1286
21-6	Shaft Design	1287
	21-6.1 Designing an Appropriate Shaft	1287
	21-6.2 Shaft Design for Strength	1289
	21-6.3 Hollow Shaft	1292
	21-6.4 Natural Frequency	1293
21-7	Impeller Features and Design	1308
	21-7.1 Impeller Blade Thickness	1309
	21-7.2 Impeller Hub Design	1310

21-8	Tanks and Mixer Supports	1310
21-8.1	Beam Mounting	1311
21-8.2	Nozzle Mounting	1313
21-8.3	Other Structural Support Mounting	1317
21-9	Wetted Materials of Construction	1318
21-9.1	Selection Process	1318
21-9.2	Selecting Potential Candidates	1319
21-9.3	Corrosion–Fatigue	1320
21-9.4	Coatings and Coverings	1327
	Nomenclature	1329
	References	1330
<b>22</b>	<b>Role of the Mixing Equipment Supplier</b>	<b>1333</b>
	<i>Ronald J. Weetman</i>	
22-1	Introduction	1333
22-2	Vendor Experience	1334
22-2.1	Equipment Selection and Sizing	1334
22-2.2	Scale-up	1337
22-3	Options	1338
22-3.1	Impeller Types	1338
22-3.2	Capital versus Operating Costs: Torque versus Power	1343
22-4	Testing	1343
22-4.1	Customer Sample Testing	1343
22-4.2	Witness Testing	1344
22-4.3	Laser Doppler Velocimetry	1345
22-4.4	Computational Fluid Dynamics	1345
22-5	Mechanical Reliability	1347
22-5.1	Applied Loads Due to Fluid Forces	1347
22-5.2	Manufacturing Technologies	1348
22-6	Service	1349
22-6.1	Changing Process Requirements	1349
22-6.2	Aftermarket and Worldwide Support	1350
22-7	Key Points	1351
	References	1352
<b>Index</b>		<b>1353</b>