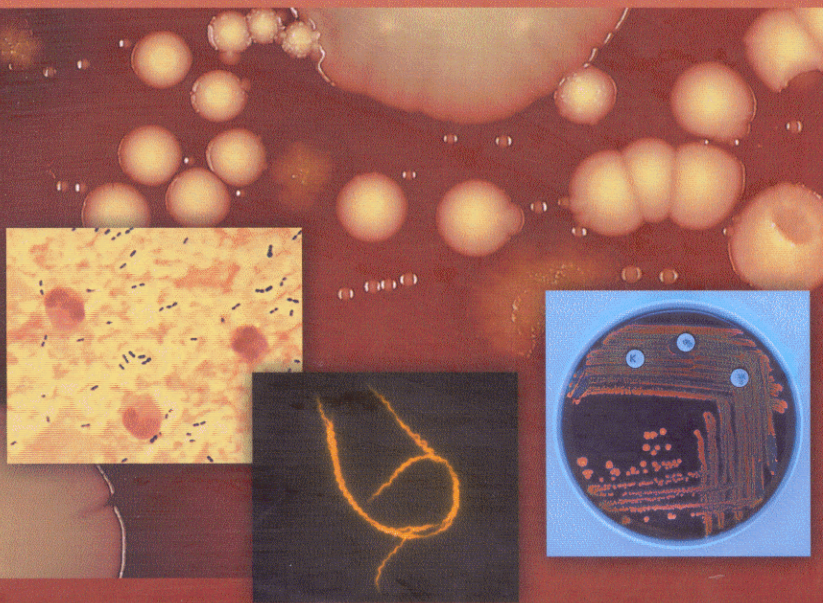


Luis M. de la Maza • Marie T. Pezzlo
Janet T. Shigei • Ellena M. Peterson

Color Atlas of Medical Bacteriology



Contents

Preface ix

Acknowledgments xi

Technical Note xi

- 1 *Staphylococcus* and *Micrococcus* 1
- 2 *Streptococcus* 10
- 3 *Enterococcus* 22
- 4 *Aerococcus*, *Abiotrophia*, and Other Miscellaneous Gram-Positive Cocci that Grow Aerobically 27
- 5 Coryneform Gram-Positive Bacilli 33
- 6 *Listeria* and *Erysipelothrix* 43
- 7 *Bacillus* 49
- 8 *Nocardia*, *Rhodococcus*, *Actinomadura*, *Streptomyces*, and Other Aerobic Actinomycetes 56
- 9 *Mycobacterium* 64
- 10 Introduction to *Enterobacteriaceae* 83
- 11 *Escherichia*, *Shigella*, and *Salmonella* 92
- 12 *Klebsiella*, *Enterobacter*, *Citrobacter*, *Serratia*, *Pantoea*, and *Raoultella* 99
- 13 *Yersinia*, *Proteae*, *Edwardsiella*, and *Hafnia* 110
- 14 *Vibrio* 121
- 15 *Aeromonas* and *Plesiomonas* 128
- 16 *Pseudomonas* 133

- 17 *Burkholderia*, *Stenotrophomonas*, *Ralstonia*, *Brevundimonas*,
Comamonas, and *Acidovorax* 138
- 18 *Acinetobacter*, *Achromobacter*, *Alcaligenes*, *Moraxella*,
Methylobacterium, and Other Nonfermentative Gram-Negative
Bacilli 144
- 19 *Actinobacillus*, *Capnocytophaga*, *Eikenella*, *Kingella*, and Other
Fastidious or Rarely Encountered Gram-Negative Bacilli 154
- 20 *Legionella* 164
- 21 *Neisseria* and *Moraxella* 167
- 22 *Haemophilus* 175
- 23 *Bordetella* 182
- 24 *Brucella* 188
- 25 *Pasteurella* 193
- 26 *Bartonella* and *Afipia* 197
- 27 *Francisella* 200
- 28 Introduction to Anaerobic Bacteria 202
- 29 *Clostridium* 212
- 30 *Peptostreptococcus*, *Propionibacterium*, *Lactobacillus*,
Actinomyces, and Other Non-Spore-Forming Anaerobic
Gram-Positive Bacteria 226
- 31 *Bacteroides*, *Porphyromonas*, *Prevotella*, *Fusobacterium*, and Other
Anaerobic Gram-Negative Bacteria 238
- 32 *Campylobacter* and *Arcobacter* 247
- 33 *Helicobacter* 252
- 34 *Chlamydia* 256
- 35 *Mycoplasma* and *Ureaplasma* 262
- 36 *Leptospira*, *Borrelia*, and *Treponema* 266
- 37 *Rickettsia*, *Orientia*, *Ehrlichia*, and *Coxiella* 273
- 38 Stains, Media, and Reagents 278