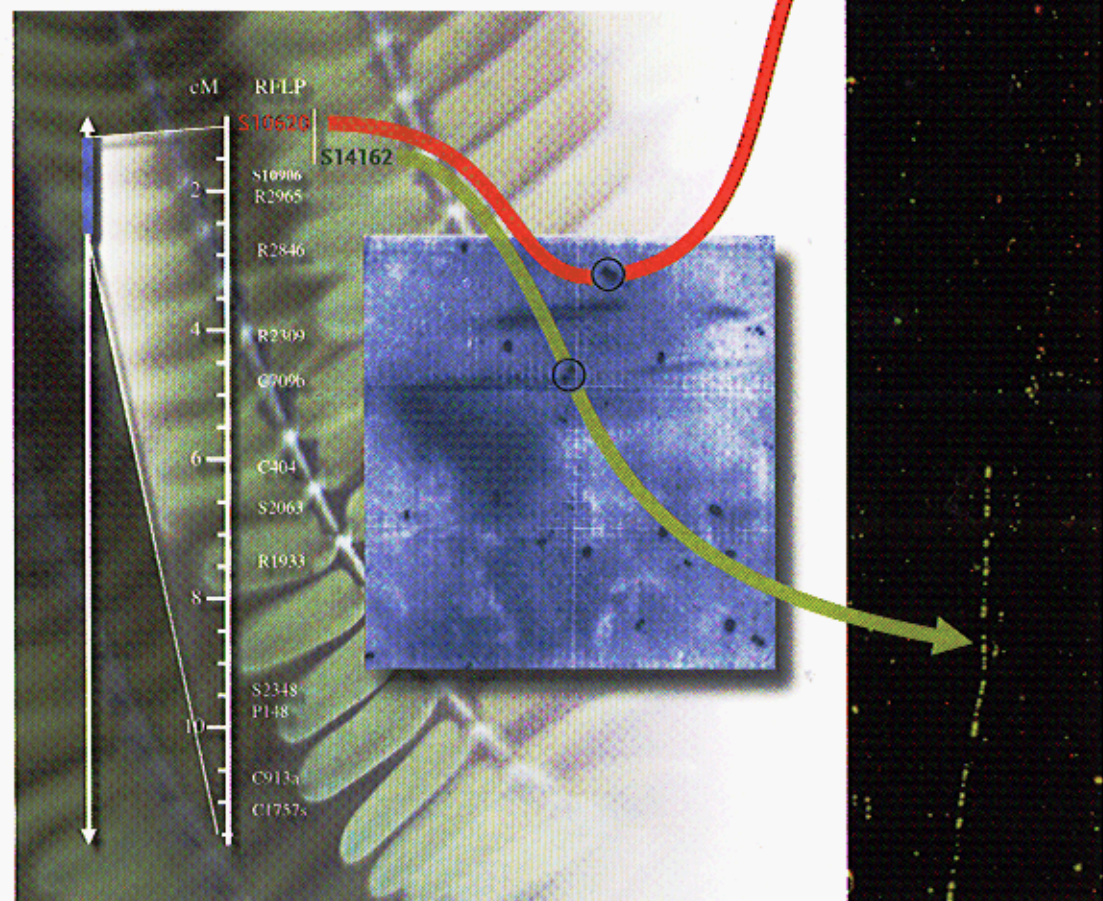


Edited by
Khalid Meksem, Guenter Kahl

WILEY-VCH

The Handbook of Plant Genome Mapping

Genetic and Physical Mapping



Contents

Part I Genetic Mapping 1

1 Mapping Populations and Principles of Genetic Mapping 3

Katharina Schneider

Overview 3

Abstract 3

1.1 Introduction 4

1.2 Mapping Populations 6

1.2.1 Mapping Populations Suitable for Self-fertilizing Plants 7

1.2.1.1 F_2 Populations 7

1.2.1.2 Recombinant Inbred Lines 8

1.2.1.3 Backcross Populations 9

1.2.1.4 Introgression Lines: Exotic Libraries 10

1.2.1.5 Doubled Haploid Lines 11

1.2.2 Mapping Populations for Cross-pollinating Species 12

1.2.3 Two-step Strategies for Mapping Mutants and DNA Fragments 12

1.2.4 Chromosome-specific Tools for Mapping 13

1.2.5 Mapping in Natural Populations/Breeding Pools 14

1.2.6 Mapping Genes and Mutants to Physically Aligned DNA 15

1.2.7 Specific Mapping Problems 15

1.3 Discussion 17

Acknowledgments 18

References 19

2 Molecular Marker Systems for Genetic Mapping 23

Henry T. Nguyen and Xiaolei Wu

Abstract 23

2.1 Introduction 23

2.2 DNA-based Markers Popularly Used in Genetic Mapping 25

2.2.1 RFLP 25

2.2.1.1 Conventional RFLP Analysis 26

2.2.1.2 PCR-RFLP 26

2.2.1.3 Mismatch PCR-RFLP 27

The Handbook of Plant Genome Mapping.

Genetic and Physical Mapping. Edited by Khalid Meksem, Günter Kahl

Copyright © 2005 WILEY-VCH Verlag GmbH & Co. KGaA, Weinheim

ISBN 3-527-31116-5

2.2.2	RAPD	28
2.2.3	SSR Markers	29
2.2.3.1	Conventional SSR Analysis	30
2.2.3.2	ISSR	34
2.2.3.3	STMP	36
2.2.4	AFLP	36
2.2.4.1	Conventional AFLP Analysis	36
2.2.4.2	f-AFLP	39
2.2.4.3	cDNA-AFLP and HiCEP	40
2.2.4.4	TE-AFLP	42
2.2.4.5	MEGA-AFLP	42
2.2.4.6	MITE-AFLPs	44
2.2.4.7	AFLP Conversion	45
2.2.5	REMAP and IRAP	47
2.2.5.1	IRAP	48
2.2.5.2	REMAP	48
2.2.6	SRAP	48
2.3	Discussion	49
	References	50
3	Methods and Software for Genetic Mapping	53
	<i>James C. Nelson</i>	
	Overview	53
	Abstract	53
3.1	Introduction	54
3.1.1	Methods and Tools for Genetic Linkage Mapping in Plants	54
3.1.1.1	Statement of the Problem	54
3.1.2	Locus Grouping	55
3.1.3	Locus Ordering	55
3.1.4	Multilocus Distance Estimation	57
3.1.5	Using Variant and Mixed Cross Designs	57
3.1.5.1	Outbreeding Species	57
3.1.5.2	Autopolyploid Species	58
3.1.5.3	Combining Datasets	58
3.1.6	<i>Linkage-mapping Software Availability, Interfaces, and Features</i>	58
3.2	Methods and Tools for QTL Mapping in Plants	59
3.2.1	Statement of the Problem	59
3.2.2	Single-marker Association	60
3.2.2.1	Metric Traits	60
3.2.2.2	Categorical Traits	60
3.2.3	Interval Mapping: Simple (SIM)	61
3.2.3.1	ML Methods	61
3.2.3.2	Least-squares (Regression) and Nonparametric Methods	61
3.2.4	Interval Mapping: Composite (CIM)	63
3.2.5	Significance Testing	63

4.2.3.4 Conclusion 96
 4.2.4 SNP Analysis IV: High-throughput SNP Analysis by MALDI-TOF MS 96
 4.2.4.1 Introduction 96
 4.2.4.2 SNP Analysis Using the Massarray Platform 97
 4.3 Conclusions and Perspectives 103
 Acknowledgments 104
 References 104

5 Breeding By Design: Exploiting Genetic Maps and Molecular Markers Through Marker-assisted Selection 109

Johan D. Peleman, Anker P. Sørensen, and Jeroen Rouppe van der Voort
 Abstract 109

5.1 Introduction 110
 5.2 Marker-assisted Selection 111
 5.2.1 Genetic Distance Analysis, Variety Identification, and Seed Purity Analysis 113
 5.2.2 Indirect Selection 113
 5.2.2.1 Monogenic Traits 113
 5.2.2.2 Polygenic (Quantitative) Traits 114
 5.2.2.3 Marker-assisted Backcrossing 116
 5.3 The Creation of Novel Varieties (Marker-assisted Breeding) 116
 5.3.1 Removal of Linkage Drag 117
 5.3.2 Pyramiding Resistance Genes 117
 5.3.3 Marker-assisted Breeding of Polygenic Traits 119
 5.3.4 Introduction of Novel Characteristics 120
 5.3.5 Effective Exploitation of (Exotic) Germ Plasm 120
 5.4 Breeding by Design 121
 5.4.1 Mapping Loci Involved in All Agronomically Relevant Traits 121
 5.4.2 Assessment of the Allelic Variation at the Loci Associated With Agronomically Relevant Traits 124
 5.4.3 Breeding by Design 125
 5.4.4 Future of Breeding by Design 127
 Acknowledgments 127
 References 128

Part II Physical Mapping 131

6 Physical Mapping of Plant Chromosomes 133

Barbara Hass-Jacobus and Scott A. Jackson

6.1 Introduction 133
 6.2 Classical Physical Mapping Techniques 134
 6.2.1 Knob Mapping in Maize 134
 6.2.2 Deletion/Aneuploid/Substitution Mapping 134
 6.2.3 Polytene Chromosomes in *Drosophila* 136
 6.2.4 Chromosome Banding 136

6.3	Molecular Physical Mapping Techniques	139
6.3.1	CHEF Gel Mapping	139
6.3.2	Radiation Hybrid Mapping	139
6.3.4	Large-insert Clone Libraries (YACs, BACs, Cosmids)	140
6.3.5	Fluorescent <i>in situ</i> Hybridization	142
6.3.6	Mapping Gene Space	144
6.4	Discussion	145
	References	146
7	Chromosome Flow Sorting and Physical Mapping	151
	<i>Jaroslav Doležal, Marie Kubaláková, Jan Bartoš, and Jiří Macas</i>	
	Overview	151
	Abstract	151
7.1	Introduction	152
7.2	Development of Flow Cytogenetics for Plants	153
7.2.1	The Uses of Flow Karyotyping	155
7.2.2	Applications of Flow-sorted Chromosomes	155
7.3	Methodologies and Techniques	157
7.3.1	Cell Cycle Synchronization and Metaphase Accumulation	157
7.3.2	Chromosome Isolation	158
7.3.3	Chromosome Analysis	158
7.3.3.1	Detection of Structural Chromosome Changes	160
7.3.3.2	Quantitative Detection of Numerical Chromosome Changes	160
7.3.3.3	Chromosome Sorting	160
7.3.3.4	Cytogenetic Mapping on Flow-sorted Chromosomes	162
7.3.3.5	Physical Mapping Using PCR	163
7.3.3.6	Chromosome and Chromosome Arm-specific DNA Libraries	165
7.3.3.7	Targeted Isolation of Molecular Markers	166
7.4	Discussion	167
	Acknowledgments	168
	References	168
8	Genomic DNA Libraries and Physical Mapping	173
	<i>Chengwei Ren, Zhanyou Xu, Shuku Sun, Mi-Kyung Lee, Chengchang Wu, Chantel Scheuring, and Hong-Bin Zhang</i>	
	Overview	173
	Abstract	173
8.1	Introduction	174
8.2	Methodologies and Techniques	176
8.2.1	Bacteria-based Large-insert DNA Clones	176
8.2.1.1	BAC	178
8.2.1.2	PAC	179
8.2.1.3	BIBACs	180
8.2.1.4	PBC	181
8.2.1.5	TAC	182

- 8.2.2 Genomic DNA Library Quality and Genome Physical Mapping 182
 - 8.2.2.1 Insert Sizes 183
 - 8.2.2.2 Clone Genome Coverage 184
 - 8.2.2.3 Representation for Genome 185
 - 8.2.2.4 The Importance of Binary Vectors in Plant Physical Mapping 187
 - 8.2.3 Construction of Bacteria-based Large-insert Genomic DNA Libraries 188
 - 8.2.3.1 Megabase-size Nuclear DNA Preparation 188
 - 8.2.3.2 Vector Preparation 191
 - 8.2.3.3 Library Construction 196
 - 8.2.4 Applications of Bacteria-based Large-insert Genomic DNA Libraries in Genome Physical Mapping 202
 - 8.2.4.1 Physical Mapping by Fingerprint Analysis 203
 - 8.2.4.2 Physical Mapping by Fluorescent *in situ* Hybridization 204
 - 8.2.4.3 Physical Mapping by Optical Mapping 204
 - 8.2.4.4 Physical Mapping by Iterative Hybridization 205
 - 8.2.4.5 Physical Mapping by Other Techniques 206
- 8.3 Discussion 208
- Acknowledgments 209
- References 210

- 9 Integration of Physical and Genetic Maps 215**
Khalid Meksem, Hirofumi Ishihara, and Tacco Jesse
 - 9.1 Introduction 215
 - 9.2 Colony Hybridization Techniques for the Integration of DNA Sequences Into a Physical Map 216
 - 9.3 Integrating Gene-rich Sequences into the Physical Map Via Overgo Hybridization 218
 - 9.3.1 Overlapping Oligo Labeling 218
 - 9.3.2 Hybridization 219
 - 9.3.3 Washing 220
 - 9.3.4 Autoradiography 220
 - 9.4 Pooling Strategy for the Integration of DNA Sequences Into a Physical Map 220
 - 9.4.1 DNA Pooling 220
 - 9.4.2 PCR Multiplexing 222
 - 9.4.3 DNA Isolation from Pooled Large-insert Clones 222
 - 9.5 Forward and Reverse Integrated Physical-Genetic Mapping: Targeted DNA Marker Mapping 223
 - 9.5.1 Integrated AFLP Mapping 224
 - 9.5.2 Targeted SSR Mapping 225
 - 9.5.2.1 Subcloning of Large-insert DNA Clones 226
 - 9.5.2.2 Colony Hybridization 226

9.6	Bioinformatic Tools for an Integrated Physical-Genetic Map: Genome Browser	227
9.6.1	GBrowse	227
9.6.2	iMap	229
9.7	Discussion	230
	References	231
10	Positional Cloning of Plant Developmental Genes	233
	<i>Peter M. Gresshoff</i>	
	Overview	233
	Abstract	234
10.1	Introduction	235
10.2	Gene Discovery Through Insertional Mutagenesis	238
10.3	Technology Requirements for Map-based Cloning	240
10.4	Positional Cloning Successes in Legume Nodulation Genes	245
10.4.1	Nodulation Biology	245
10.4.2	Non-nodulation Genes	247
10.4.3	Autoregulation of Nodulation Genes	249
10.5	Conclusions	252
	Acknowledgments	253
	References	253
11	Whole-genome Physical Mapping: An Overview on Methods for DNA Fingerprinting	257
	<i>Chengcang Wu, Shuku Sun, Mi-Kyung Lee, Zhanyou Xu, Chengwei Ren, Teofila S. Santos, and Hong-Bin Zhang</i>	
	Overview	257
	Abstract	257
11.1	Introduction	258
11.1.1	Inception and Development of DNA Fingerprinting	258
11.1.2	Clone-based Whole-genome Physical Mapping	259
11.1.3	Source DNA Libraries for Whole-genome Physical Mapping	260
11.2	Techniques and Methodologies	261
11.2.1	Preparation of DNA from Bacteria-based Large-insert Clones	263
11.2.1.1	Isolation of DNA from Bacteria-based Large-insert Clones Using the Clone-by-Clone Approach	263
11.2.1.2	Isolation of DNA from Bacteria-based Large-insert Clones in 96-well Format Using a Manual Approach	264
11.2.1.3	Isolation of DNA from Bacteria-based Large-insert Clones in 96-well Format Using the AutoGenprep 960 Robotic Workstation	265
11.2.2	Fingerprinting the Clone DNA Using Restriction Enzymes	265
11.2.2.1	Agarose Gel-based, Restriction Fingerprinting Method	265
11.2.2.2	Polyacrylamide (Sequencing) Gel-based, Restriction Fingerprinting Method	268

- 11.2.2.3 Automatic Sequencing Gel- and Capillary Electrophoresis-based Restriction Fingerprinting Methods 271
- 11.2.3 Applications of DNA Fingerprinting for Genome Physical Mapping 275
 - 11.2.3.1 Whole-genome Physical Maps Generated from Large-insert Bacterial Clones by Fingerprint Analysis 275
 - 11.2.3.2 Comparison of Different Fingerprinting Methods 277
- 11.3 Discussion 280
 - Acknowledgements 282
 - References 282

- 12 Software for Restriction Fragment Physical Maps 285**
William Nelson and Carol Soderlund
 - Overview 285
 - 12.1 Introduction 285
 - 12.1.1 Review of Agarose Fingerprinting and FPC 285
 - 12.2 HICF Techniques 288
 - 12.2.1 Generalities 288
 - 12.2.2 Approaches Using Type IIS Enzymes 289
 - 12.2.3 SNaPshot HICF 290
 - 12.3 Processing HICF Data 291
 - 12.3.1 Peak Scoring 291
 - 12.3.2 Sizing of Fragments 292
 - 12.3.3 Quality and Contamination Screening 293
 - 12.3.4 Vector and Repeat Screening 294
 - 12.3.5 Packaging HICF Data for FPC 295
 - 12.3.6 GenoProfiler 295
 - 12.4 Building HICF Maps in FPC 296
 - 12.4.1 Creating a New Project, Loading the Fingerprints, and Screening Vectors 297
 - 12.4.2 Tolerance and Gel Length 298
 - 12.4.3 Cutoff 299
 - 12.4.4 Building 300
 - 12.4.5 Build Quality, Q Clones, and the DQer 300
 - 12.4.6 multiFPC 301
 - 12.5 Theoretical Aspects 302
 - 12.5.1 Simulations 302
 - 12.5.2 Overlap Equations 303
 - Acknowledgments 304
 - References 304

13	Reduced Representation Strategies and Their Application to Plant Genomes	307
	<i>Daniel G. Peterson</i>	
	Overview	307
13.1	Introduction	308
13.2	Reduced Representation Techniques	311
13.2.1	EST Sequencing	311
13.2.2	Methylation Filtration	311
13.2.3	Cot-based Cloning and Sequencing	313
13.2.4	<i>De Novo</i> Polymorphism Discovery	316
13.2.4.1	Reduced Representation Shotgun (RRS) Sequencing	317
13.2.4.2	DOP-PCR	318
13.2.4.3	SSR Capture	318
13.3	Other Reduced Representation Techniques	320
13.4	Discussion	320
13.4.1	Repeat Sequence Enrichment	320
13.4.2	Sequencing Gene space	322
13.4.2.1	EST Sequencing	322
13.4.2.2	Methylation Filtration	323
13.4.2.3	Cot-based Cloning and Sequencing	325
13.4.2.4	Integration of Reduced Representation Strategies	327
13.4.3	Polymorphism Discovery	328
13.4.3.1	RRS Sequencing and DOP-PCR	328
13.4.3.2	Microsatellite Isolation	328
13.5	Conclusions	329
	Acknowledgments	330
	References	330
14	Large-scale DNA Sequencing	337
	<i>Christopher D. Town</i>	
	Abstract	337
14.1	Introduction	337
14.2	Motivation for Sequencing and Choice of Strategy	338
14.3	EST Sequencing	338
14.4	Large-scale Sequencing BAC-based Projects	339
14.5	Chromosome-based Sequencing	340
14.6	Whole-genome Shotgun Sequencing	341
14.7	Selective Genome Sequencing by Differential Cloning Strategies	341
14.8	Low-coverage Sequencing	341
14.9	BAC End Sequencing	343
14.10	The Sequencing Process Itself	343
14.10.1	Library Production	343
14.10.2	Template Production	344
14.10.3	Sequencing Reactions and Analysis	344
14.10.4	Sequencing Capacity and Costs	345

XVIII | *Contents*

14.10.5	Post-sequencing Data Processing	345
14.10.5.1	Quality Trimming	345
14.10.5.2	Sequence Assembly	346
14.10.5.3	Scaffolding	346
14.10.5.4	Sequence Editing and Gap Closure	347
14.11	Conclusions	347
	Acknowledgments	348
	References	348

Glossary 353

Subject Index 371