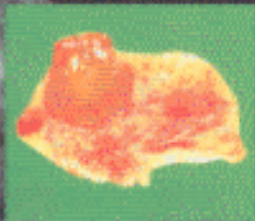
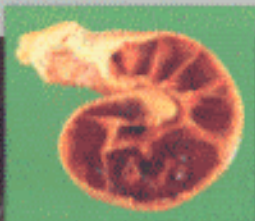


Wolfgang Kähn

Veterinary Reproductive Ultrasonography

Horse - Cattle - Sheep - Goat -
Pig - Dog - Cat



English Translation and Revision
Dietrich Volkmann - Robert Kenney

schlütersche

vet

C

Contents

Preface to first edition

Preface to current edition

1	Ultrasonography in the mare	11
1.1	Technique of ultrasonography in the mare	11
1.2	Ovarian structures in the mare	15
1.2.1	Follicles	15
1.2.1.1	Sonographic images of follicles	15
1.2.1.2	Development of preovulatory follicles.....	19
1.2.1.3	Transvaginal sonographic puncture of follicles	23
1.2.2	Corpora lutea	25
1.2.2.1	Sonographic images of corpora lutea	25
1.2.2.2	Development of corpora lutea during the estrous cycle and in early pregnancy	27
1.2.3	Anovulatory luteinized follicles.....	33
1.2.4	Follicular and ovarian hematomas.....	35
1.2.5	Ovarian tumors and cysts	37
1.3	Uterine structures in the mare	41
1.3.1	Non-pregnant uterus	41
1.3.2	Pregnant uterus	43
1.3.2.1	Day 9 to 13 of pregnancy	43
1.3.2.2	Day 14 to 20 of pregnancy	43
1.3.2.3	Day 21 to 40 of pregnancy	49
1.3.2.4	Day 41 to 60 of pregnancy	51
1.3.2.5	Twin pregnancy.....	53
1.3.2.6	Transvaginal sonographic puncture of the conceptus.....	57
1.3.3	Ultrasonography of the equine fetus	61
1.3.3.1	Imaging of fetal organs.....	61
1.3.3.1.1	Head, neck and spinal column	61
1.3.3.1.2	Thorax and heart	61
1.3.3.1.3	Abdomen and pelvic region	63
1.3.3.2	Accessibility of equine fetuses by transrectal sonography.....	65
1.3.3.3	Sonographic fetometry in horses	65
1.3.3.3.1	Eye and braincase	65
1.3.3.3.2	Ribs, trunk and stomach.....	67
1.3.4	Uterine pathology.....	69
1.3.4.1	Embryonic death.....	69
1.3.4.2	Abnormal pregnancy	71
1.3.4.3	Post partum uterus	71
1.3.4.4	Endometritis	75
1.3.4.5	Pyo-, muco- and urometra.....	77
1.3.4.6	Endometrial cysts.....	79
	References to preface	80
	References to chapter 1	80
2	Ultrasonography in the cow	83
2.1	Technique of ultrasonography in the cow	83
2.2	Ovarian structures in the cow	89
2.2.1	Follicles	89
2.2.1.1	Sonographic images of follicles	89

2.2.1.2	Follicular development during the estrous cycle and in early pregnancy.....	93
2.2.1.3	Estrous follicles.....	95
2.2.2	Corpora lutea.....	95
2.2.2.1	Sonographic images of corpora lutea	95
2.2.2.2	Incidence and development of cystic and non-cystic corpora lutea during the estrous cycle and in early pregnancy.....	103
2.2.3	Ovarian cysts.....	107
2.2.4	Ovarian tumors.....	111
2.3	Uterine structures in the cow.....	113
2.3.1	Non-pregnant uterus	113
2.3.2	Pregnant uterus	119
2.3.2.1	Day 10 to 20 of pregnancy	119
2.3.2.2	Day 21 to 24 of pregnancy	121
2.3.2.3	Day 25 to 30 of pregnancy	123
2.3.2.4	Day 31 to 40 of pregnancy	127
2.3.2.5	Day 41 to 90 of pregnancy	129
2.3.2.6	2nd and 3rd trimester of pregnancy.....	133
2.3.2.7	Twin and multiple pregnancies	135
2.3.3	Uterine pathology.....	137
2.3.3.1	Embryonic death	137
2.3.3.2	Fetal mummification	137
2.3.3.3	Fetal maceration.....	137
2.3.3.4	Postpartum uterus	139
2.3.3.5	Endometritis	141
2.3.3.6	Pyometra.....	141
2.4	Ultrasonography of the bovine fetus	143
2.4.1	Imaging of fetal organs.....	143
2.4.1.1	Head.....	145
2.4.1.2	Spinal column	153
2.4.1.3	Neck.....	157
2.4.1.4	Thorax.....	157
2.4.1.5	Abdomen	159
2.4.1.6	Pelvis	163
2.4.1.7	Front limb	163
2.4.1.8	Hind limb	165
2.4.1.9	Umbilical cord, amnion and allantois.....	167
2.4.2	Sex determination in the bovine fetus	169
2.4.2.1	Scrotum, teats and genital tubercle.....	169
2.4.3	Accessibility of bovine fetuses for transrectal sonography and their intra-uterine presentations during pregnancy	173
2.4.3.1	Accessibility of fetal body parts.....	173
2.4.3.2	Fetal intra-uterine presentations.....	173
2.4.4	Sonographic fetometry in cattle.....	175
2.4.4.1	Eye and braincase.....	175
2.4.4.2	Heart frequency, crown-rump-length, diameters of stomach, trunk, scrotum and umbilical cord	177
2.4.4.3	Cervical, thoracic, lumbar, coccygeal vertebrae and ribs	179
2.4.4.4	Front and hind limbs	181
	References to chapter 2	184

3	Ultrasonography in sheep and goats	187
3.1	Technique of ultrasonography in sheep and goats	187
3.1.1	Transcutaneous sonography	187
3.1.2	Transrectal sonography	189
3.2	Ovarian structures in sheep and goats	191
3.2.1	Follicles and corpora lutea	191
3.3	Uterine structures in sheep and goats	195
3.3.1	Non-pregnant uterus	195
3.3.2	Pregnant uterus	197
3.3.2.1	Before Day 20 of pregnancy	197
3.3.2.2	Day 20 to 40 of pregnancy	197
3.3.2.3	Day 40 to 100 of pregnancy	201
3.3.2.4	Day 100 to 150 of pregnancy	205
3.3.2.5	Accuracy of sonographic pregnancy diagnosis	207
3.3.3	Uterine pathology	209
	References to chapter 3	210
4	Ultrasonography in pigs	213
4.1	Technique of ultrasonography in pigs	213
4.1.1	Transcutaneous sonography	213
4.1.2	Transrectal sonography	213
4.2	Ovarian structures in pigs	215
4.2.1	Follicles and corpora lutea	215
4.2.2	Ovarian cysts	217
4.3	Uterine structures in pigs	219
4.3.1	Non-pregnant uterus	219
4.3.2	Pregnant uterus	219
4.3.2.1	Before Day 20 of pregnancy	219
4.3.2.2	Day 20 to 115 of pregnancy	219
4.3.2.3	Accuracy of sonographic pregnancy diagnosis	223
	References to chapter 4	224
5	Ultrasonography in dogs and cats	227
5.1	Technique of ultrasonography in dogs and cats	227
5.2	Ovarian structures in dogs and cats	231
5.2.1	Ovarian tumors and cysts	231
5.3	Uterine structures in dogs and cats	233
5.3.1	Pregnant uterus	233
5.3.1.1	Before Day 20 of pregnancy	233
5.3.1.2	Day 20 to 30 of pregnancy	233
5.3.1.3	Day 31 to 50 of pregnancy	239
5.3.1.4	Day 51 to 65 of pregnancy	245
5.3.1.5	Obstetric diagnostics	245
5.3.1.6	Postpartum uterus	245
5.3.2	Uterine pathology	247
5.3.2.1	Embryonic death	247
5.3.2.2	Pyometra, endometritis, cystic glandular hyperplasia	249
	References to chapter 5	252
	Subject index	253