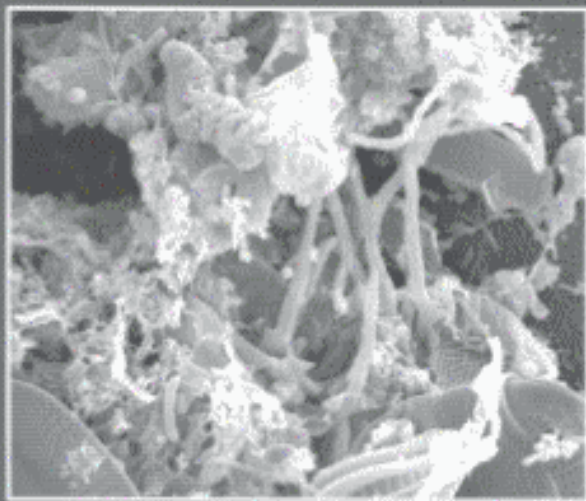


Wiley Series in Ecological and Applied Microbiology  
Ralph Mitchell, Series Editor

 **WILEY**

# **WASTEWATER MICROBIOLOGY**

**Third Edition**



**GABRIEL BITTON**

# CONTENTS

Preface	ix
Preface to the First Edition	xi
Preface to the Second Edition	xiii
<b>PART A. FUNDAMENTALS OF MICROBIOLOGY</b>	<b>1</b>
1. The Microbial World	3
2. Microbial Metabolism and Growth	45
3. Role of Microorganisms in Biogeochemical Cycles	75
<b>PART B. PUBLIC HEALTH MICROBIOLOGY</b>	<b>107</b>
4. Pathogens and Parasites in Domestic Wastewater	109
5. Microbial Indicators of Fecal Contamination	153
6. Water and Wastewater Disinfection	173
<b>PART C. MICROBIOLOGY OF WASTEWATER TREATMENT</b>	<b>211</b>
7. Introduction to Wastewater Treatment	213
8. Activated Sludge Process	225
9. Bulking and Foaming in Activated Sludge Plants	259
10. Processes Based on Attached Microbial Growth	291
11. Waste Stabilization Ponds	307
12. Sludge Microbiology	321
13. Anaerobic Digestion of Wastewater and Biosolids	345
14. Biological aerosols and Bioodors from Wastewater Treatment Plants	371
<b>PART D. MICROBIOLOGY OF DRINKING WATER TREATMENT</b>	<b>395</b>
15. Microbiological Aspects of Drinking Water Treatment	397
16. Microbiological Aspects of Drinking Water Distribution	419
17. Bioterrorism and Drinking Water Safety	457
<b>PART E. BIOTECHNOLOGY IN WASTEWATER TREATMENT</b>	<b>471</b>
18. Pollution Control Biotechnology	473
	vii

<b>PART F. FATE AND TOXICITY OF CHEMICALS IN WASTEWATER TREATMENT PLANTS</b>	<b>499</b>
19. Fate of Xenobiotics and Toxic Metals in Wastewater Treatment Plants	501
20. Toxicity Testing in Wastewater Treatment Plants Using Microorganisms	527
<b>PART G. MICROBIOLOGY AND PUBLIC HEALTH ASPECTS OF WASTEWATER EFFLUENTS AND BIOSOLIDS DISPOSAL AND REUSE</b>	<b>545</b>
21. Public Health Aspects of Wastewater and Biosolids Disposal on Land	547
22. Public Health Aspects of Wastewater and Biosolids Disposal in the Marine Environment	573
23. Wastewater Reuse	589
<b>References</b>	<b>609</b>
<b>Index</b>	<b>729</b>